

# Washington Elementary School District

Maricopa County

Efficiency peer groups 7 and T-3, Achievement peer group 14<sup>1</sup>

Legislative district(s): 20, 24, 28, and 30

District size, location:

Very large, City

Students attending:

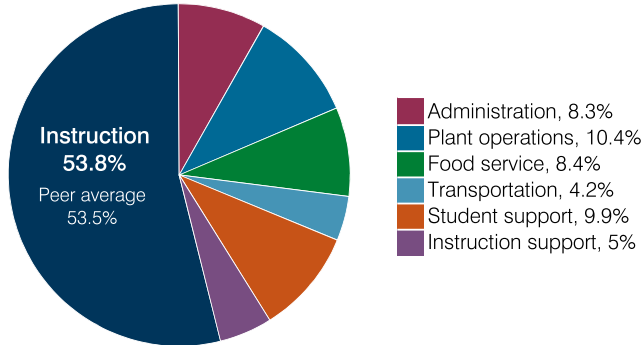
21,919

Number of schools:

32

## OPERATIONAL EFFICIENCY

### Spending by operational area



### Efficiency measures relative to peer averages

Operational area	Measure	District	Peer average	State average
Administration	Cost per pupil	\$699	\$796	\$860
	Students per administrative position	79	76	66
Plant operations	Cost per square foot	\$6.57	\$6.16	\$6.34
	Square footage per student	134	133	156
Food service	Cost per meal	\$2.90	\$2.99	\$3.02
Transportation	Cost per mile	\$5.18	\$4.47	\$4.05
	Cost per rider	\$1,264	\$1,248	\$1,301

Very low
Low
Comparable
High
Very high

### Per pupil spending

Spending by area	District		Peer average 2018	State average 2018
	2017	2018		
Instruction	\$ 4,455	\$ 4,553	\$ 4,238	\$ 4,480
Administration	690	699	796	860
Plant operations	829	879	815	988
Food service	686	709	580	425
Transportation	367	355	298	388
Student support	819	838	646	693
Instruction support	445	422	486	462
<b>Total operational</b>	<b>8,291</b>	<b>8,455</b>	<b>7,859</b>	<b>8,296</b>
Land and buildings	677	965	517	827
Equipment	308	236	393	409
Interest	179	168	189	228
Other	168	171	188	169
<b>Total nonoperational</b>	<b>1,332</b>	<b>1,540</b>	<b>1,287</b>	<b>1,633</b>
<b>Total per pupil spending</b>	<b>\$ 9,623</b>	<b>\$ 9,995</b>	<b>\$ 9,146</b>	<b>\$ 9,929</b>

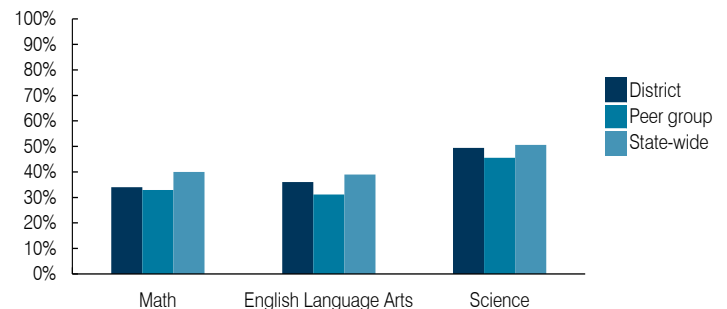
<sup>1</sup> See Appendix A for information such as districts included in each peer group and Appendix B for sources and methodology.

## STUDENT ACHIEVEMENT, STUDENT AND TEACHER MEASURES, AND REVENUES

### ADE-assigned school letter grades

Grade	Number of schools	Percentage of schools
A	4	13%
B	13	41%
C	12	38%
D	3	8%
F	0	0%

### Students who passed State assessments



### Student and teacher measures

Measure	District	Peer average	State average
Attendance rate	94%	94%	94%
Graduation rate (2017)	N/A	N/A	N/A
Poverty rate (2017)	27%	28%	19%
Special education population	14%	12%	12%
Students per teacher	16.7	18.9	18.4
Average teacher salary	\$43,938	\$46,164	\$48,951
Amount from Prop 301	\$5,978	\$5,459	\$6,411
Average years of teacher experience	11.1	9.3	11.4
Percentage of teachers in first 3 years	28%	26%	19%

### Per pupil revenues

Revenues by source	District		Peer average 2018	State average 2018
	2017	2018		
Federal	\$ 1,819	\$ 1,731	\$ 1,588	\$ 1,317
State	4,441	4,679	4,344	4,011
Local	3,460	3,427	3,644	4,592
<b>Total per pupil revenues</b>	<b>\$ 9,720</b>	<b>\$ 9,837</b>	<b>\$ 9,576</b>	<b>\$ 9,920</b>

### Select revenues from common sources

Equalization formula funding	\$ 5,275	\$ 5,355	\$ 5,167	\$ 5,585
Grants	1,878	1,864	1,650	1,241
Donations and tax credits	42	46	46	90

### Select revenues from less common sources

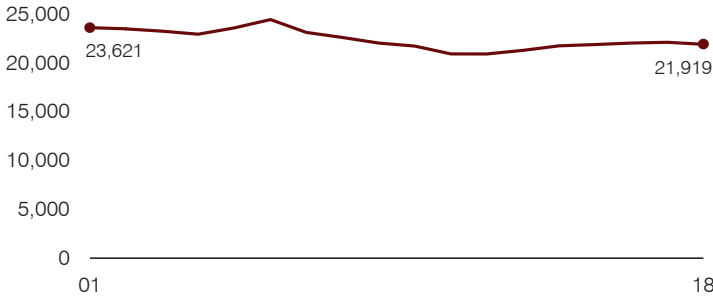
			Number of peers receiving
Desegregation	\$ 271	\$ 261	4 of 10
Small school adjustment	0	0	0 of 10
Federal impact aid	0	0	2 of 10
Voter-approved levy increases	1,447	1,460	10 of 10

## Instructional spending percentage

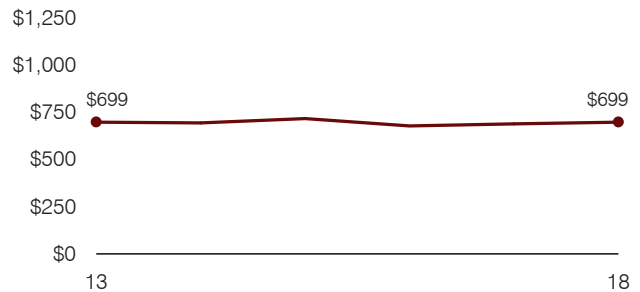
Year: 2001 2002 2003 2004 2005 2006 2007 2008 2009 2010 2011 2012 2013 2014 2015 2016 2017 2018  
 Percentage: 64.0 62.3 62.3 61.3 60.8 62.0 60.3 57.6 57.5 55.5 55.9 55.7 54.1 54.3 54.5 53.7 53.7 53.8

### TRENDS AND FINANCIAL STRESS ASSESSMENT Fiscal years as indicated

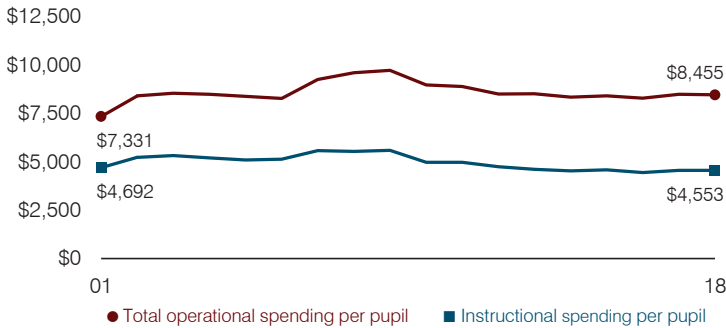
#### Students attending



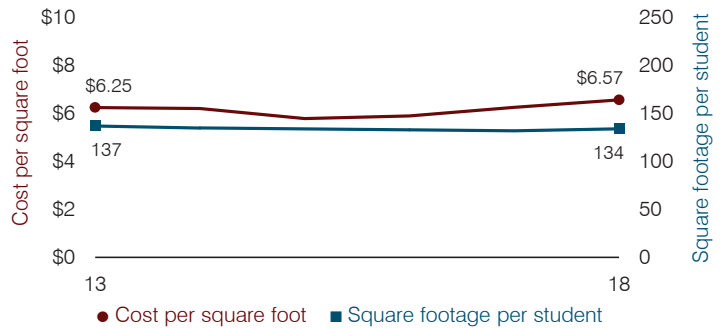
#### Administrative cost per pupil



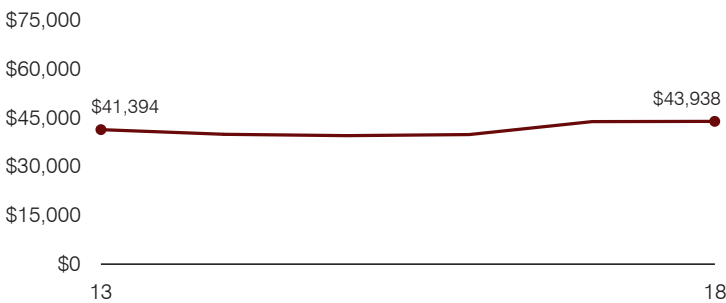
#### Total operational and instructional spending per pupil (inflation adjusted to 2018 dollars)



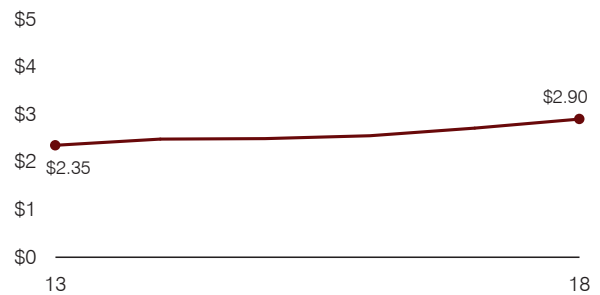
#### Plant cost per square foot and square footage per student



#### Average teacher salary



#### Food service cost per meal



#### Financial stress assessment

Overall financial stress level: **Low**

Measure: 2016 through 2018	Assessment
Change in number of district students	Steady
Spending exceeded operating/capital budgets	No overspending
Spending increase election results	Voter-approved
Operating reserve percentage, Trend	8.3%, Increasing
Years of capital reserve held	More than 3 years
Current financial and internal control status	Compliant

**Low**      **Moderate**      **High**

#### Transportation costs per mile and per rider

