

Vernon Elementary School District

Apache County

Efficiency peer groups 11 and T-11, Achievement peer group 19¹

Legislative district(s): 7

District size, location:

Very small, Rural

Students attending:

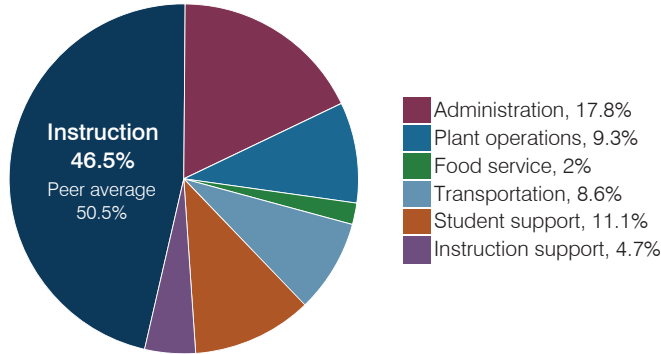
81

Number of schools:

1

OPERATIONAL EFFICIENCY

Spending by operational area



Efficiency measures relative to peer averages

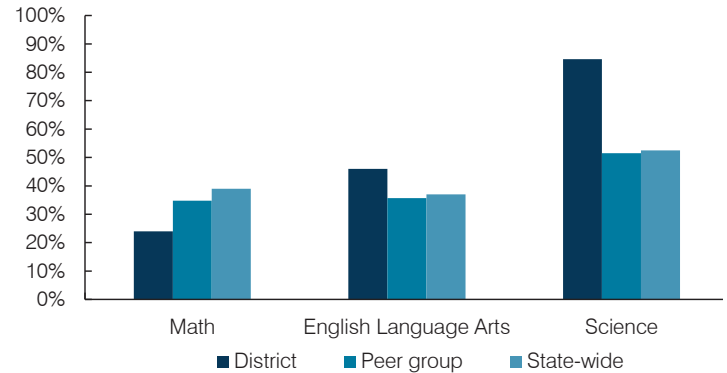
Operational area	Measure	District	Peer average	State average
Administration	Cost per pupil	\$3,095	\$3,137	\$844
	Students per administrative position	18	32	67
Plant operations	Cost per square foot	\$5.60	\$6.96	\$6.30
	Square footage per student	289	412	155
Food service	Cost per meal	\$2.51	\$5.79	\$2.88
Transportation	Cost per mile	\$1.32	\$1.87	\$3.84
	Cost per rider	\$990	\$1,459	\$1,198

Per pupil spending

Spending by area	District		Peer average 2017	State average 2017
	2016	2017		
Instruction	\$ 7,092	\$ 8,085	\$ 8,613	\$ 4,377
Administration	4,116	3,095	3,137	844
Plant operations	1,691	1,618	2,644	977
Food service	463	351	1,000	422
Transportation	1,606	1,496	961	381
Student support	750	1,916	601	679
Instruction support	743	811	498	461
Total operational	\$ 16,461	\$ 17,372	\$ 17,454	\$ 8,141
Land and buildings	\$ 642	\$ 0	\$ 1,161	\$ 691
Equipment	1,485	95	735	424
Interest	16	0	31	236
Other	2	0	90	161
Total nonoperational	\$ 2,145	\$ 95	\$ 2,017	\$ 1,512
Total per pupil spending	\$ 18,606	\$ 17,467	\$ 19,471	\$ 9,653

STUDENT ACHIEVEMENT, STUDENT AND TEACHER MEASURES, AND REVENUES

Students who passed state assessments



Student and teacher measures

Measure	District	Peer average	State average
Attendance rate	92%	93%	94%
Graduation rate (2016)	N/A	N/A	N/A
Poverty rate (2016)	30%	34%	22%
Special education population	12%	15%	12%
Students per teacher	10.2	14.8	18.5
Average teacher salary	\$43,781	\$46,717	\$48,372
Amount from Prop 301	\$4,094	\$4,152	\$5,840
Average years of teacher experience	10.7	11.3	11.3
Percentage of teachers in first 3 years	33%	16%	19%

Per pupil revenues

Revenues by source	District		Peer average 2017	State average 2017
	2016	2017		
Federal	\$ 3,487	\$ 2,442	\$ 2,908	\$ 1,318
State	7,016	9,168	5,692	3,831
Local	4,871	6,396	13,343	4,443
Total per pupil revenues	\$ 15,374	\$ 18,006	\$ 21,943	\$ 9,592

Select revenues from common sources

	District 2016	District 2017	Peer average 2017	State average 2017
Equalization formula funding	\$ 10,263	\$ 11,307	\$ 9,932	\$ 5,503
Amount from Prop 123	282	322	315	245
Prop 123 additional funding	57	63	57	46
Grants	3,929	2,624	2,701	1,185
Donations and tax credits	35	52	184	89

Select revenues from less common sources

	District 2016	District 2017	Number of peers receiving
Desegregation	\$ 0	\$ 0	0 of 54
Small school adjustment	508	615	44 of 54
Federal impact aid	0	0	5 of 54
Voter-approved levy increases	0	0	7 of 54

¹ See Appendix A for information such as districts included in each peer group and Appendix B for sources and methodology.

Instructional spending percentage

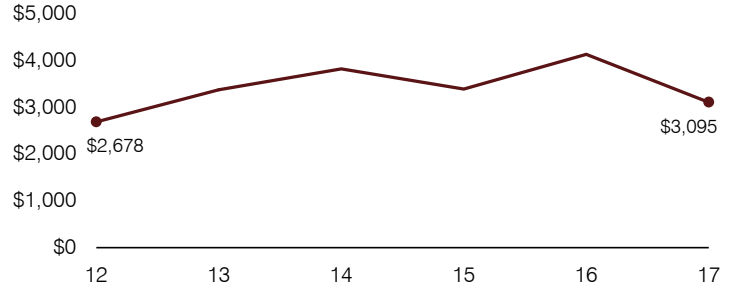
Year:	2001	2002	2003	2004	2005	2006	2007	2008	2009	2010	2011	2012	2013	2014	2015	2016	2017
Percentage:	45.6	41.5	46.5	46.0	51.6	43.3	39.8	38.3	44.0	45.2	43.6	45.9	48.4	41.9	44.2	43.1	46.5

OPERATIONAL TRENDS AND FINANCIAL STRESS ASSESSMENT
Fiscal years as indicated

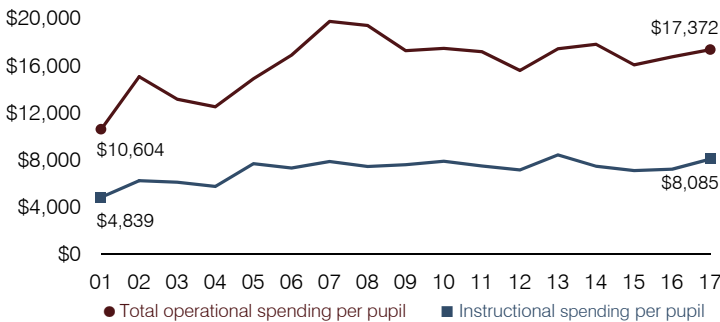
5-year spending trend (2012 through 2017)

Student enrollment decreased by 30 percent, which contributed to the 11 percent increase in total operational spending per pupil, adjusted for inflation. The percentage of dollars spent on instruction varied year to year, increasing slightly overall from 45.9 to 46.5 percent. As a percentage of total operational spending, all noninstructional areas also varied year to year, as is common for very small districts.

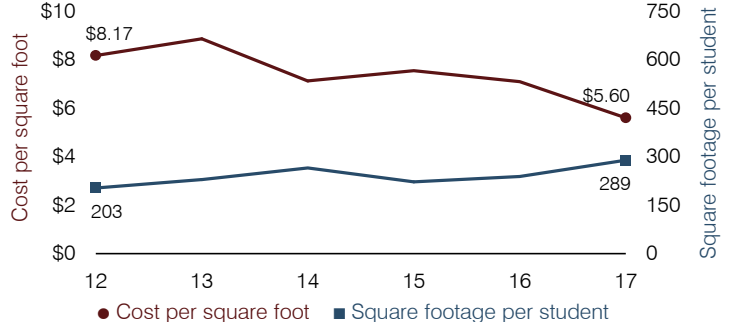
Administrative cost per pupil



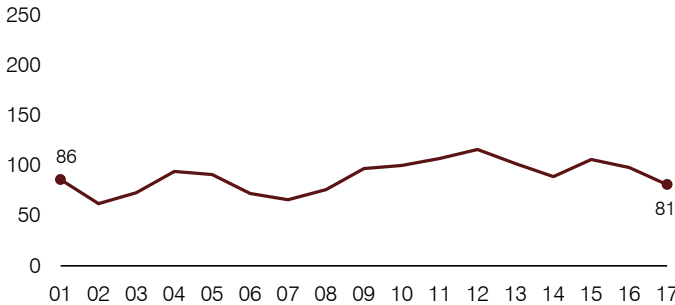
Total operational and instructional spending per pupil (inflation adjusted to 2017 dollars)



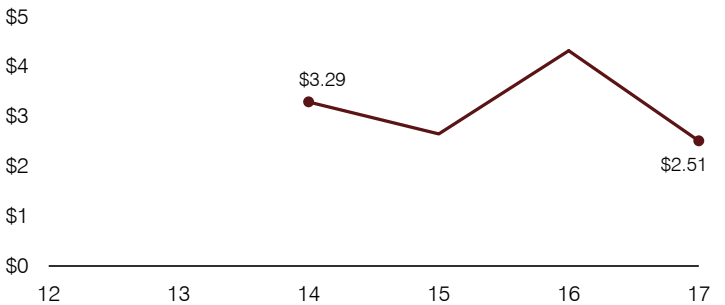
Plant cost per square foot and square footage per student



Students attending



Food service cost per meal



Financial stress assessment

Overall financial stress level: **Moderate**

Measure: 2015 through 2017

	Assessment
Change in number of district students	Small school adjustment
Spending exceeded operating/capital budgets	Isolated
Spending increase election results	No election held
Operating reserve percentage, Trend	3.4%, Increasing
Years of capital reserve held	1 to 3 years
Current financial and internal control status	Marginally compliant

Low Moderate High

Transportation costs per mile and per rider

