

# Toltec Elementary School District

Pinal County

Efficiency peer groups 9 and T-6, Achievement peer group 17<sup>1</sup>

Legislative district(s): 11

District size, location:

Medium, Rural

Students attending:

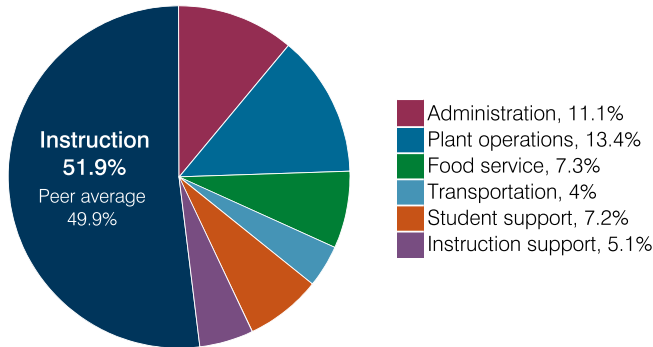
948

Number of schools:

2

## OPERATIONAL EFFICIENCY

### Spending by operational area



### Efficiency measures relative to peer averages

Operational area	Measure	District	Peer average	State average
Administration	Cost per pupil	\$798	\$1,098	\$860
	Students per administrative position	73	59	66
Plant operations	Cost per square foot	\$5.39	\$6.52	\$6.34
	Square footage per student	180	161	156
Food service	Cost per meal	\$2.61	\$3.10	\$3.02
Transportation	Cost per mile	\$3.95	\$3.96	\$4.05
	Cost per rider	\$608	\$721	\$1,301

Very low   Low   Comparable   High   Very high

### Per pupil spending

Spending by area	District		Peer average 2018	State average 2018
	2017	2018		
Instruction	\$ 4,158	\$ 3,739	\$ 4,233	\$ 4,480
Administration	928	798	1,098	860
Plant operations	847	970	1,034	988
Food service	511	524	591	425
Transportation	245	289	526	388
Student support	573	518	584	693
Instruction support	477	367	462	462
<b>Total operational</b>	<b>7,739</b>	<b>7,205</b>	<b>8,528</b>	<b>8,296</b>
Land and buildings	177	845	416	827
Equipment	2	222	316	409
Interest	87	111	75	228
Other	58	3	170	169
<b>Total nonoperational</b>	<b>324</b>	<b>1,181</b>	<b>977</b>	<b>1,633</b>
<b>Total per pupil spending</b>	<b>\$ 8,063</b>	<b>\$ 8,386</b>	<b>\$ 9,505</b>	<b>\$ 9,929</b>

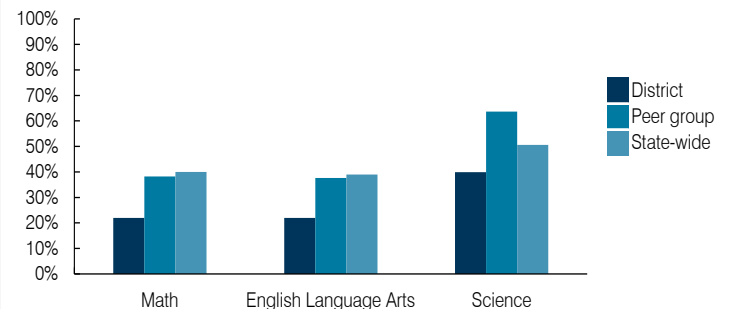
<sup>1</sup> See Appendix A for information such as districts included in each peer group and Appendix B for sources and methodology.

## STUDENT ACHIEVEMENT, STUDENT AND TEACHER MEASURES, AND REVENUES

### ADE-assigned school letter grades

Grade	Number of schools	Percentage of schools
A	0	0%
B	0	0%
C	2	100%
D	0	0%
F	0	0%

### Students who passed State assessments



### Student and teacher measures

Measure	District	Peer average	State average
Attendance rate	92%	94%	94%
Graduation rate (2017)	N/A	N/A	N/A
Poverty rate (2017)	19%	19%	19%
Special education population	17%	13%	12%
Students per teacher	18.1	14.1	18.4
Average teacher salary	\$38,533	\$50,510	\$48,951
Amount from Prop 301	\$7,040	\$5,096	\$6,411
Average years of teacher experience	5.3	13.8	11.4
Percentage of teachers in first 3 years	57%	9%	19%

### Per pupil revenues

Revenues by source	District		Peer average 2018	State average 2018
	2017	2018		
Federal	\$ 1,135	\$ 1,884	\$ 1,836	\$ 1,317
State	4,784	4,846	4,904	4,011
Local	2,991	2,576	2,715	4,592
<b>Total per pupil revenues</b>	<b>\$ 8,910</b>	<b>\$ 9,306</b>	<b>\$ 9,455</b>	<b>\$ 9,920</b>

### Select revenues from common sources

Equalization formula funding	\$ 5,794	\$ 5,785	\$ 5,707	\$ 5,585
Grants	1,172	2,131	2,113	1,241
Donations and tax credits	45	30	67	90

### Select revenues from less common sources

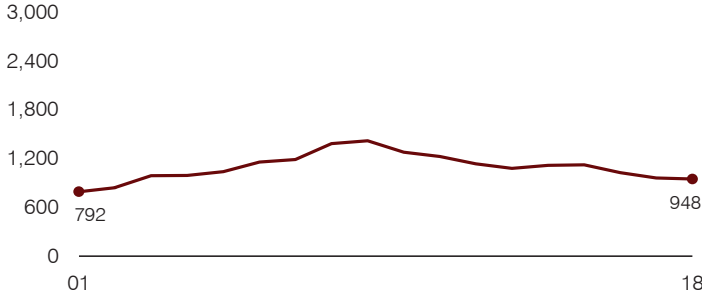
			Number of peers receiving
Desegregation	\$ 0	\$ 0	0 of 10
Small school adjustment	0	0	0 of 10
Federal impact aid	0	0	3 of 10
Voter-approved levy increases	471	469	8 of 10

**Instructional spending percentage**

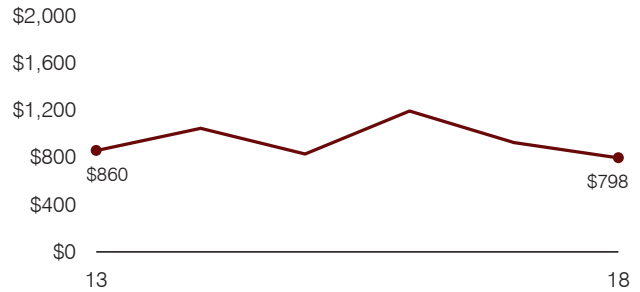
Year: 2001 2002 2003 2004 2005 2006 2007 2008 2009 2010 2011 2012 2013 2014 2015 2016 2017 2018  
 Percentage: 61.0 60.0 58.1 57.5 62.3 64.6 59.0 58.0 59.0 53.9 49.9 44.9 45.4 49.2 53.5 45.2 53.7 51.9

**TRENDS AND FINANCIAL STRESS ASSESSMENT**  
 Fiscal years as indicated

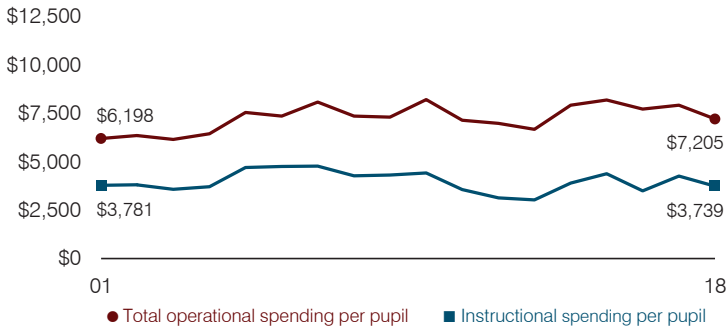
**Students attending**



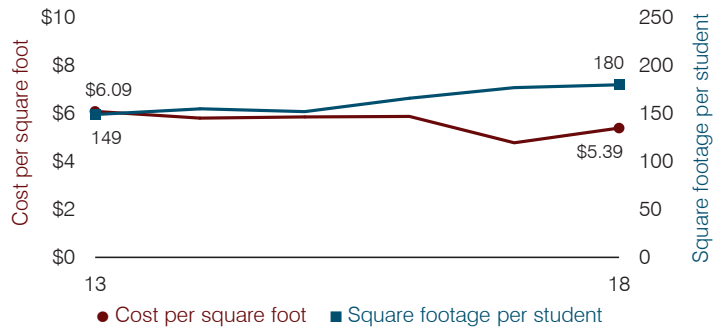
**Administrative cost per pupil**



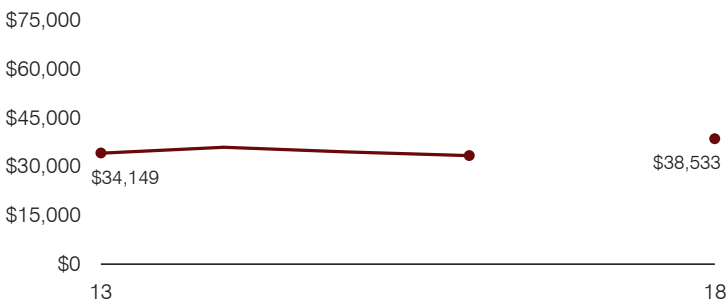
**Total operational and instructional spending per pupil (inflation adjusted to 2018 dollars)**



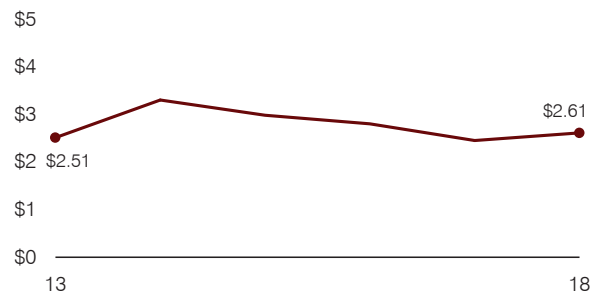
**Plant cost per square foot and square footage per student**



**Average teacher salary**



**Food service cost per meal**



**Financial stress assessment**

Overall financial stress level: **Moderate**

Measure: 2016 through 2018	Assessment
Change in number of district students	Moderate decrease
Spending exceeded operating/capital budgets	No overspending
Spending increase election results	No election held
Operating reserve percentage, Trend	13.9%, Increasing
Years of capital reserve held	1 to 3 years
Current financial and internal control status	Noncompliant

Low
Moderate
High

**Transportation costs per mile and per rider**

