

# Thatcher Unified School District

Graham County

Efficiency peer groups 5 and T-6, Achievement peer group 5<sup>1</sup>

Legislative district(s): 14

District size, location:

Medium, Town

Students attending:

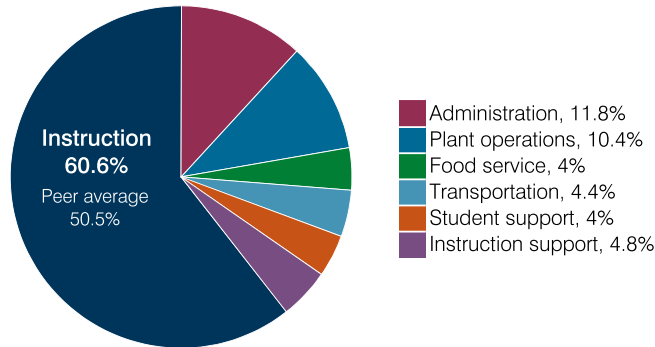
1,676

Number of schools:

4

## OPERATIONAL EFFICIENCY

### Spending by operational area



### Efficiency measures relative to peer averages

Operational area	Measure	District	Peer average	State average
Administration	Cost per pupil	\$765	\$1,221	\$860
	Students per administrative position	73	54	66
Plant operations	Cost per square foot	\$3.98	\$5.43	\$6.34
	Square footage per student	170	257	156
Food service	Cost per meal	\$3.96	\$3.66	\$3.02
Transportation	Cost per mile	\$4.23	\$3.96	\$4.05
	Cost per rider	\$712	\$721	\$1,301

Very low   Low   Comparable   High   Very high

### Per pupil spending

Spending by area	District		Peer average 2018	State average 2018
	2017	2018		
Instruction	\$ 3,774	\$ 3,932	\$ 4,824	\$ 4,480
Administration	758	765	1,221	860
Plant operations	712	678	1,365	988
Food service	267	263	437	425
Transportation	257	286	532	388
Student support	107	259	623	693
Instruction support	300	311	359	462
<b>Total operational</b>	<b>6,175</b>	<b>6,494</b>	<b>9,361</b>	<b>8,296</b>
Land and buildings	600	549	799	827
Equipment	264	178	433	409
Interest	95	81	248	228
Other	2	12	71	169
<b>Total nonoperational</b>	<b>961</b>	<b>820</b>	<b>1,551</b>	<b>1,633</b>
<b>Total per pupil spending</b>	<b>\$ 7,136</b>	<b>\$ 7,314</b>	<b>\$10,912</b>	<b>\$ 9,929</b>

<sup>1</sup> See Appendix A for information such as districts included in each peer group and Appendix B for sources and methodology.

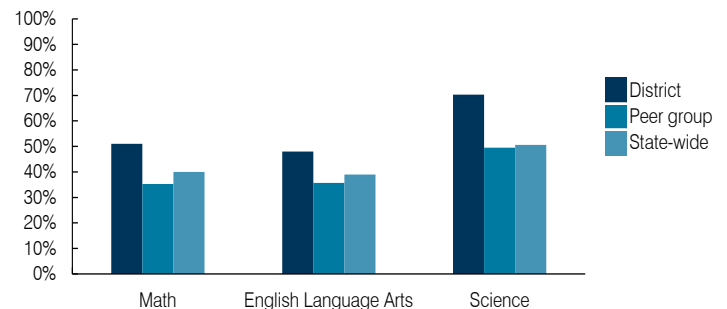
## STUDENT ACHIEVEMENT, STUDENT AND TEACHER MEASURES, AND REVENUES

### ADE-assigned school letter grades

Grade	Number of schools <sup>2</sup>	Percentage of schools
A	1	33%
B	1	33%
C	1	33%
D	0	0%
F	0	0%

<sup>2</sup> Excludes schools for which letter grades were not published by ADE. See Appendix B for more information.

### Students who passed State assessments



### Student and teacher measures

Measure	District	Peer average	State average
Attendance rate	95%	93%	94%
Graduation rate (2017)	95%	86%	78%
Poverty rate (2017)	19%	22%	19%
Special education population	15%	13%	12%
Students per teacher	19.3	17.6	18.4
Average teacher salary	\$42,519	\$44,777	\$48,951
Amount from Prop 301	\$8,489	\$6,708	\$6,411
Average years of teacher experience	11.6	13.0	11.4
Percentage of teachers in first 3 years	17%	17%	19%

### Per pupil revenues

Revenues by source	District		Peer average 2018	State average 2018
	2017	2018		
Federal	\$ 410	\$ 517	\$ 3,917	\$ 1,317
State	5,310	5,001	4,283	4,011
Local	1,852	1,901	4,207	4,592
<b>Total per pupil revenues</b>	<b>\$ 7,572</b>	<b>\$ 7,419</b>	<b>\$ 12,407</b>	<b>\$ 9,920</b>

### Select revenues from common sources

Source	District	Peer average	State average
Equalization formula funding	\$ 5,041	\$ 5,195	\$ 5,992
Grants	932	574	1,703
Donations and tax credits	44	33	147

### Select revenues from less common sources

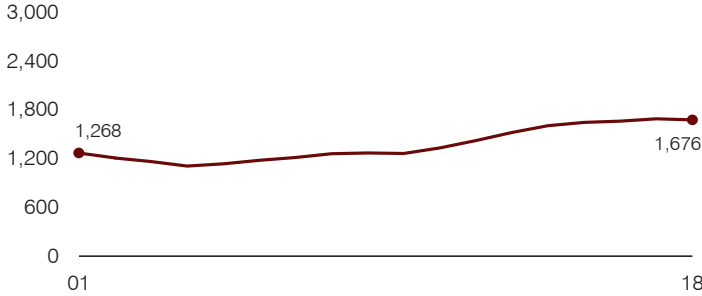
Source	District	Peer average	State average
Desegregation	\$ 0	\$ 0	0 of 31
Small school adjustment	0	0	0 of 31
Federal impact aid	0	0	16 of 31
Voter-approved levy increases	577	580	21 of 31

**Instructional spending percentage**

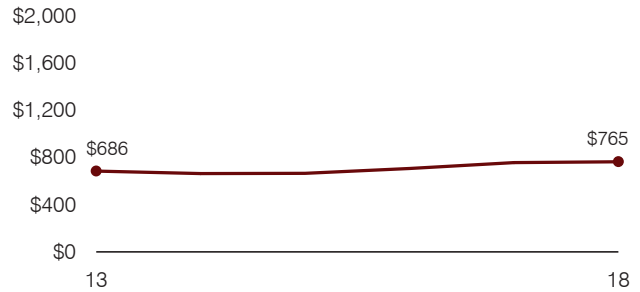
Year: 2001 2002 2003 2004 2005 2006 2007 2008 2009 2010 2011 2012 2013 2014 2015 2016 2017 2018  
 Percentage: 58.8 60.1 59.1 56.6 61.1 59.9 61.6 62.2 62.4 60.8 58.8 57.7 59.8 60.5 62.0 61.6 61.1 60.6

**TRENDS AND FINANCIAL STRESS ASSESSMENT**  
 Fiscal years as indicated

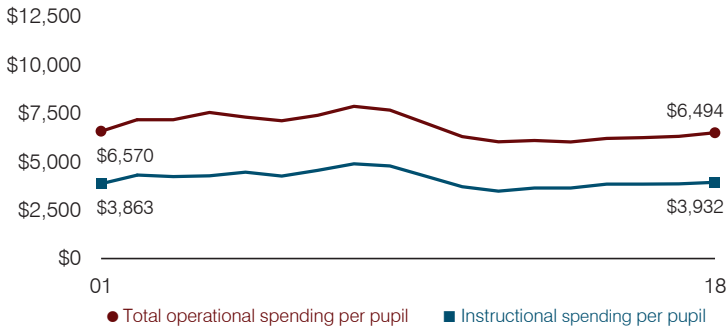
**Students attending**



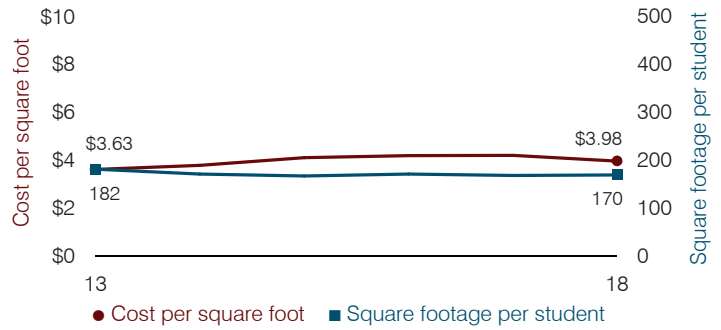
**Administrative cost per pupil**



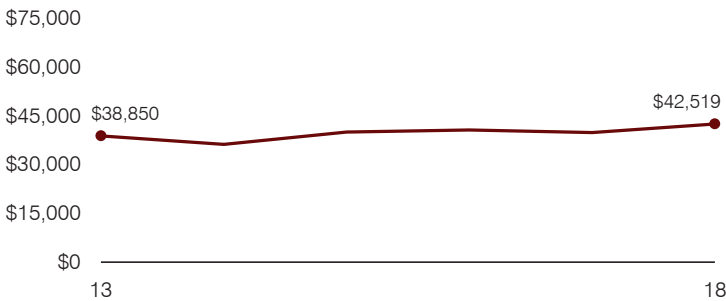
**Total operational and instructional spending per pupil (inflation adjusted to 2018 dollars)**



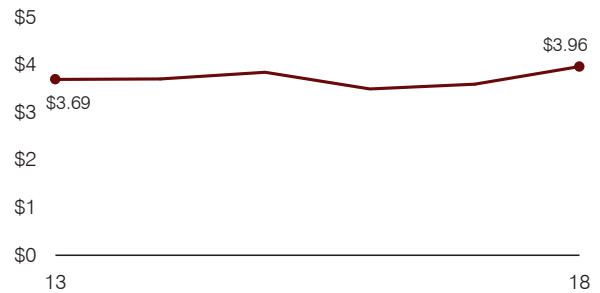
**Plant cost per square foot and square footage per student**



**Average teacher salary**



**Food service cost per meal**



**Financial stress assessment**

Overall financial stress level: **Low**

Measure: 2016 through 2018	Assessment
Change in number of district students	Steady
Spending exceeded operating/capital budgets	No overspending
Spending increase election results	No election held
Operating reserve percentage, Trend	3.9%, Increasing
Years of capital reserve held	More than 3 years
Current financial and internal control status	Compliant

Low
Moderate
High

**Transportation costs per mile and per rider**

