

# Tempe Union High School District

Maricopa County

Efficiency peer groups 2 and T-3, Achievement peer group 8<sup>1</sup>

Legislative district(s): 18, 26, and 27

District size, location:

Large, City

Students attending:

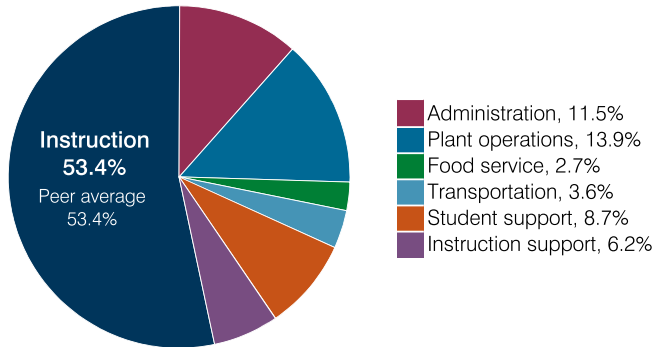
13,725

Number of schools:

7

## OPERATIONAL EFFICIENCY

### Spending by operational area



### Efficiency measures relative to peer averages

Operational area	Measure	District	Peer average	State average
Administration	Cost per pupil	\$908	\$804	\$860
	Students per administrative position	69	67	66
Plant operations	Cost per square foot	\$6.46	\$6.44	\$6.34
	Square footage per student	170	148	156
Food service	Cost per meal	\$3.30	\$3.08	\$3.02
Transportation	Cost per mile	\$3.89	\$4.47	\$4.05
	Cost per rider	\$1,087	\$1,248	\$1,301

Very low    Low    Comparable    High    Very high

### Per pupil spending

Spending by area	District		Peer average 2018	State average 2018
	2017	2018		
Instruction	\$ 4,338	\$ 4,201	\$ 4,135	\$ 4,480
Administration	898	908	804	860
Plant operations	1,095	1,095	941	988
Food service	222	210	342	425
Transportation	279	284	394	388
Student support	670	687	624	693
Instruction support	525	487	492	462
<b>Total operational</b>	<b>8,027</b>	<b>7,872</b>	<b>7,732</b>	<b>8,296</b>
Land and buildings	286	268	738	827
Equipment	447	506	531	409
Interest	223	220	238	228
Other	149	131	153	169
<b>Total nonoperational</b>	<b>1,105</b>	<b>1,125</b>	<b>1,660</b>	<b>1,633</b>
<b>Total per pupil spending</b>	<b>\$ 9,132</b>	<b>\$ 8,997</b>	<b>\$ 9,392</b>	<b>\$ 9,929</b>

<sup>1</sup> See Appendix A for information such as districts included in each peer group and Appendix B for sources and methodology.

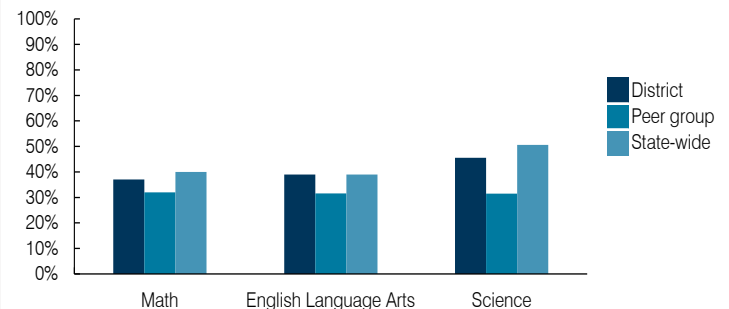
## STUDENT ACHIEVEMENT, STUDENT AND TEACHER MEASURES, AND REVENUES

### ADE-assigned school letter grades

Grade	Number of schools <sup>2</sup>	Percentage of schools
A	2	33%
B	3	50%
C	1	17%
D	0	0%
F	0	0%

<sup>2</sup> Excludes schools for which letter grades were not published by ADE. See Appendix B for more information.

### Students who passed State assessments



### Student and teacher measures

Measure	District	Peer average	State average
Attendance rate	94%	94%	94%
Graduation rate (2017)	89%	88%	78%
Poverty rate (2017)	10%	14%	19%
Special education population	8%	11%	12%
Students per teacher	22.2	22.2	18.4
Average teacher salary	\$56,089	\$52,191	\$48,951
Amount from Prop 301	\$7,851	\$8,523	\$6,411
Average years of teacher experience	14.6	10.6	11.4
Percentage of teachers in first 3 years	7%	21%	19%

### Per pupil revenues

Revenues by source	District		Peer average 2018	State average 2018
	2017	2018		
Federal	\$ 603	\$ 499	\$ 930	\$ 1,317
State	1,907	1,946	3,760	4,011
Local	7,285	7,052	4,666	4,592
<b>Total per pupil revenues</b>	<b>\$ 9,795</b>	<b>\$ 9,497</b>	<b>\$ 9,356</b>	<b>\$ 9,920</b>

### Select revenues from common sources

Equalization formula funding	\$ 5,716	\$ 5,763	\$ 5,545	\$ 5,585
Grants	717	603	1,051	1,241
Donations and tax credits	98	115	107	90

### Select revenues from less common sources

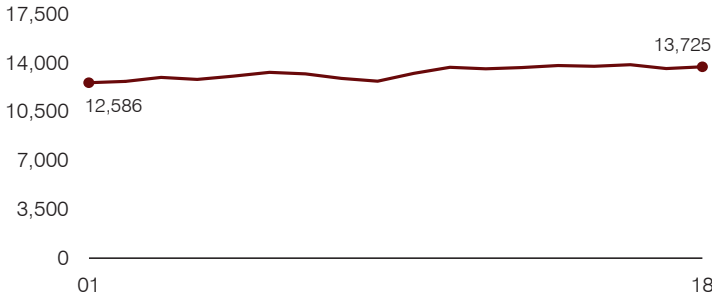
			Number of peers receiving
Desegregation	\$ 0	\$ 0	3 of 10
Small school adjustment	0	0	0 of 10
Federal impact aid	0	0	2 of 10
Voter-approved levy increases	1,580	1,500	10 of 10

**Instructional spending percentage**

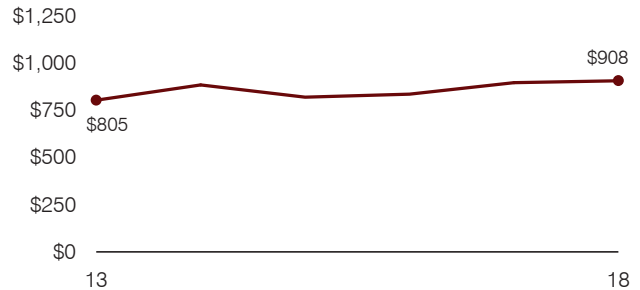
Year: 2001 2002 2003 2004 2005 2006 2007 2008 2009 2010 2011 2012 2013 2014 2015 2016 2017 2018  
 Percentage: 58.0 57.1 58.0 58.6 58.9 59.6 59.7 59.9 56.8 56.7 56.4 53.8 53.5 52.7 53.3 54.1 54.0 53.4

**TRENDS AND FINANCIAL STRESS ASSESSMENT**  
 Fiscal years as indicated

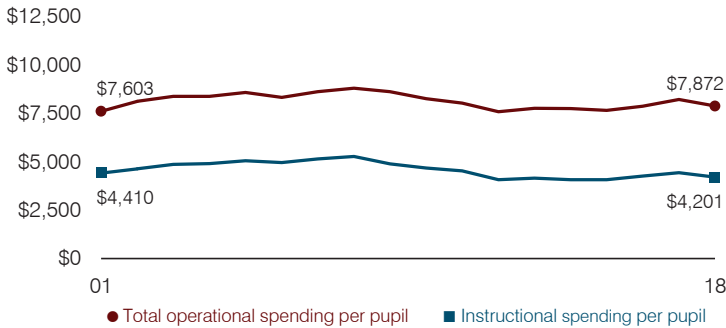
**Students attending**



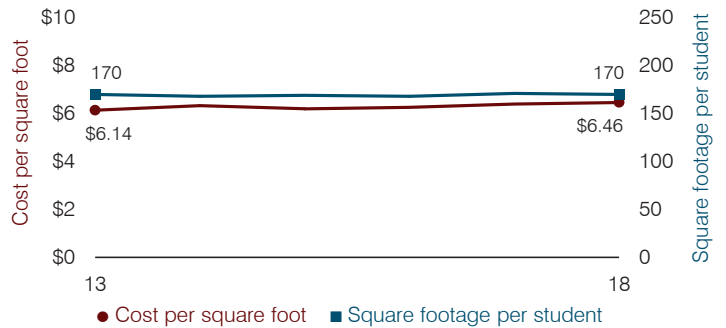
**Administrative cost per pupil**



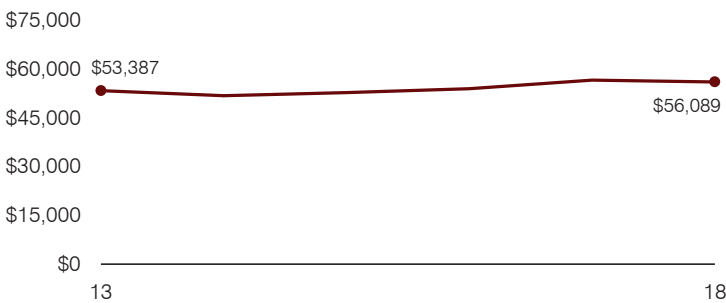
**Total operational and instructional spending per pupil (inflation adjusted to 2018 dollars)**



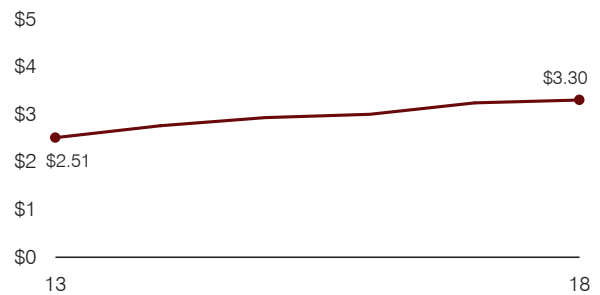
**Plant cost per square foot and square footage per student**



**Average teacher salary**



**Food service cost per meal**



**Financial stress assessment**

Overall financial stress level: **Low**

Measure: 2016 through 2018	Assessment
Change in number of district students	Steady
Spending exceeded operating/capital budgets	No overspending
Spending increase election results	Voter-approved
Operating reserve percentage, Trend	7.9%, Varying
Years of capital reserve held	More than 3 years
Current financial and internal control status	Marginally compliant

**Low**      **Moderate**      **High**

**Transportation costs per mile and per rider**

