

Somerton Elementary School District

Yuma County

Efficiency peer groups 9 and T-6, Achievement peer group 19

Legislative district(s): 4

District size, location:

Medium-large, Town

Students attending¹:

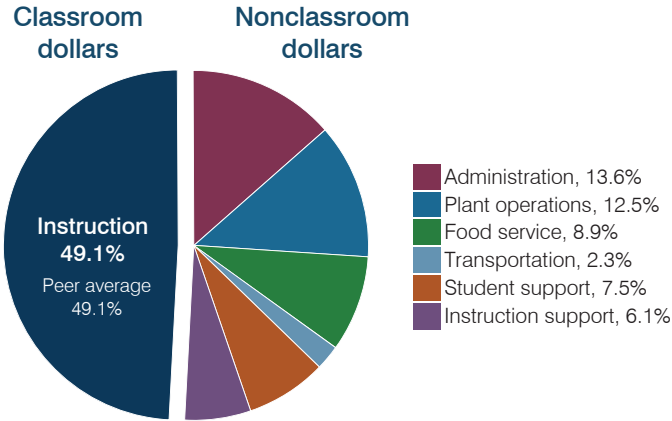
2,707

Number of schools:

5

OPERATIONAL EFFICIENCY

Spending by operational area



Efficiency measures relative to peer averages

Operational area	Measure	District	Peer average	State average
Administration	Cost per pupil	\$956	\$1,108	\$806
	Students per administrative position	58	59	67
Plant operations	Cost per square foot	\$7.60	\$7.02	\$6.10
	Square footage per student	115	149	154
Food service	Cost per meal	\$2.70	\$2.88	\$2.81
Transportation	Cost per mile	\$2.75	\$3.68	\$3.72
	Cost per rider	\$515	\$543	\$1,092

Very low Low Comparable High Very high

Per pupil spending

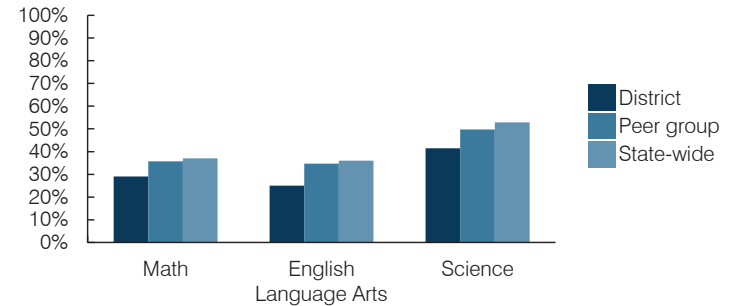
Spending by area	District		Peer average 2016	State average 2016
	2015	2016		
Instruction	\$ 3,338	\$ 3,444	\$ 3,970	\$ 4,145
Administration	932	956	1,108	806
Plant operations	874	876	1,027	939
Food service	625	627	573	415
Transportation	195	164	437	364
Student support	443	523	512	633
Instruction support	419	424	473	444
Total operational	\$ 6,826	\$ 7,014	\$ 8,100	\$ 7,746
Land and buildings	\$ 380	\$ 331	\$ 302	\$ 621
Equipment	370	417	308	400
Interest	84	82	81	216
Other	149	146	115	153
Total nonoperational	\$ 983	\$ 976	\$ 806	\$ 1,390
Total per pupil spending	\$ 7,809	\$ 7,990	\$ 8,906	\$ 9,136

STUDENT AND TEACHER MEASURES, FINANCIAL ASSESSMENT, AND REVENUES

Student and teacher measures

Measure	District	Peer average	State average
Attendance rate (2015)	96%	94%	94%
Graduation rate (2015)	N/A	N/A	N/A
Poverty rate (2015)	37%	34%	23%
Students per teacher	21.4	16.1	18.6
Average teacher salary	\$43,131	\$47,933	\$46,384
Amount from Proposition 301	\$4,297	\$4,405	\$5,315
Average years of teacher experience	8.8	12.0	11.0
Percentage of teachers in first 3 years	22%	18%	20%

Students who passed state assessments



Financial stress assessment

Overall financial stress level: **Low**

Measure: 2014 through 2016

Assessment

Change in number of district students	Steady
Spending exceeded operating/capital budgets	No overspending
Spending increase election results	Voter-approved
Operating reserve percentage, Trend	3.9%, Steady
Years of capital reserve held	More than 3 years
Current financial and internal control status	Compliant

Low Moderate High

Per pupil revenues

Revenues by source	District		Peer average 2016	State average 2016
	2015	2016		
Federal	\$ 1,906	\$ 2,007	\$ 1,836	\$ 1,301
State	4,685	4,948	4,877	3,780
Local	893	868	2,734	4,268
Total revenues per pupil	\$ 7,484	\$ 7,823	\$ 9,447	\$ 9,349

Select revenues from common sources

Equalization formula funding	\$ 4,894	\$ 5,010	\$ 5,688	\$ 5,471
Grants	1,906	2,012	1,981	1,182
Donations and tax credits	7	48	72	86

Select revenues from less common sources

	Number of peers receiving		
Desegregation	\$ 0	\$ 0	0 of 10
Small school adjustment	0	0	0 of 10
Federal impact aid	33	24	3 of 10
Voter-approved levy increases	590	544	7 of 10

¹ District is working with the Arizona Department of Education to resolve student count discrepancy. See Appendix B, page b-5.

Somerton ESD—page 2

Classroom dollar percentage

Year:	2001	2002	2003	2004	2005	2006	2007	2008	2009	2010	2011	2012	2013	2014	2015	2016
Percentage:	50.4	51.4	52.1	51.7	50.7	50.5	50.6	47.9	49.6	49.7	47.1	46.6	47.1	47.7	48.9	49.1

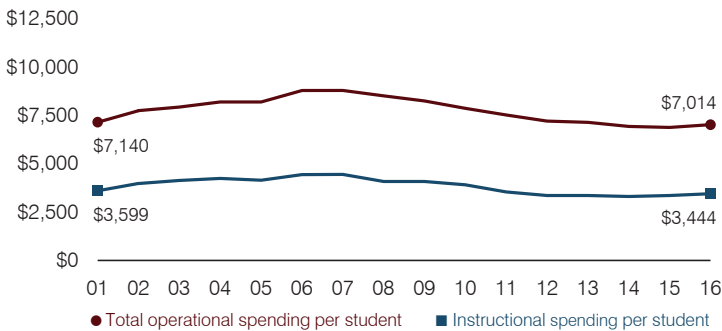
OPERATIONAL TRENDS

Fiscal years as indicated

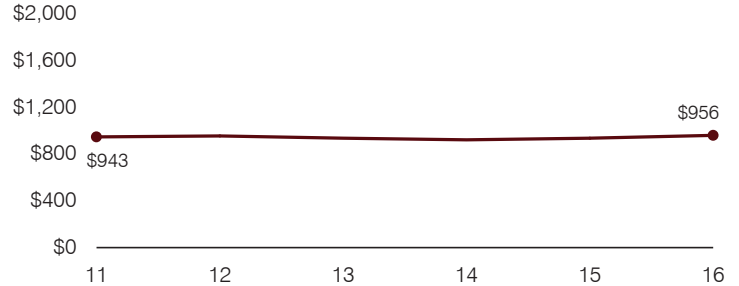
5-year spending trend (2011 through 2016)

Total operational spending per pupil, adjusted for inflation, decreased by 7 percent. The percentage of dollars spent in the classroom increased overall from 47.1 to 49.1 percent. Overall, as a percentage of total operational spending, plant operations and instruction support decreased and transportation support decreased slightly. Food service increased and student support increased slightly, while administration remained stable.

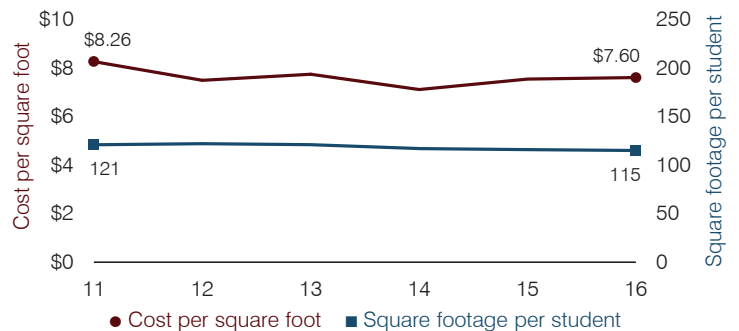
Total operational and instructional spending per pupil (inflation adjusted to 2016 dollars)



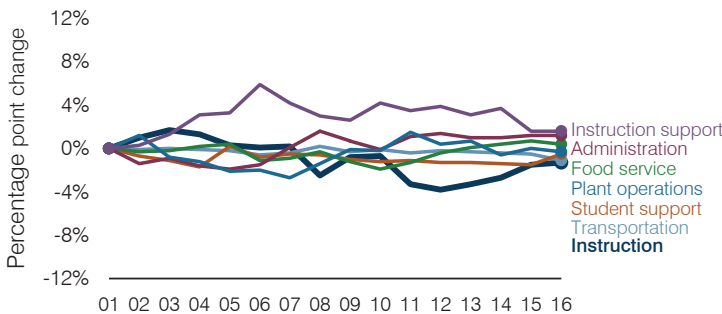
Administrative cost per pupil



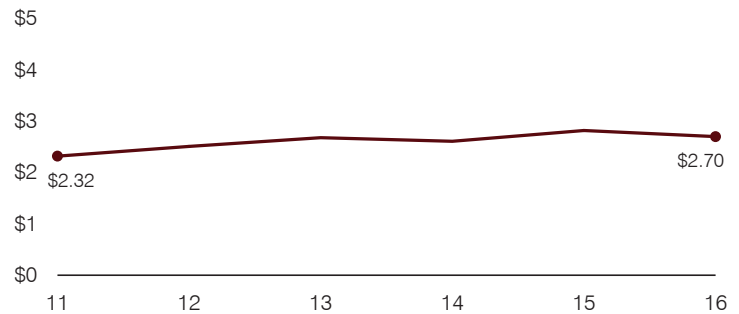
Plant cost per square foot and square footage per student



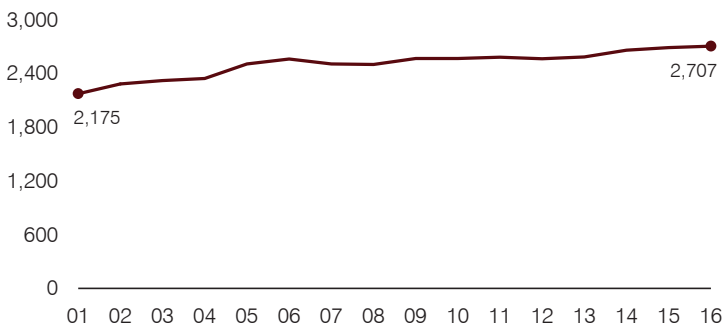
Changes in operational spending percentages



Food service cost per meal



Students attending



Transportation costs per mile and per rider

