

# Show Low Unified School District

Navajo County

Efficiency peer groups 4 and T-8, Achievement peer group 6<sup>1</sup>

Legislative district(s): 6 and 7

District size, location:

Medium-large, Rural

Students attending:

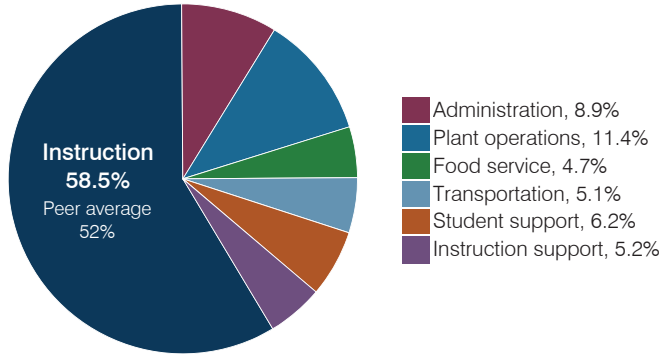
2,392

Number of schools:

5

## OPERATIONAL EFFICIENCY

### Spending by operational area



### Efficiency measures relative to peer averages

Operational area	Measure	District	Peer average	State average
Administration	Cost per pupil	\$653	\$844	\$844
	Students per administrative position	68	69	67
Plant operations	Cost per square foot	\$4.52	\$5.36	\$6.30
	Square footage per student	186	190	155
Food service	Cost per meal	\$3.60	\$3.00	\$2.88
Transportation	Cost per mile	\$2.73	\$2.95	\$3.84
	Cost per rider	\$976	\$1,037	\$1,198

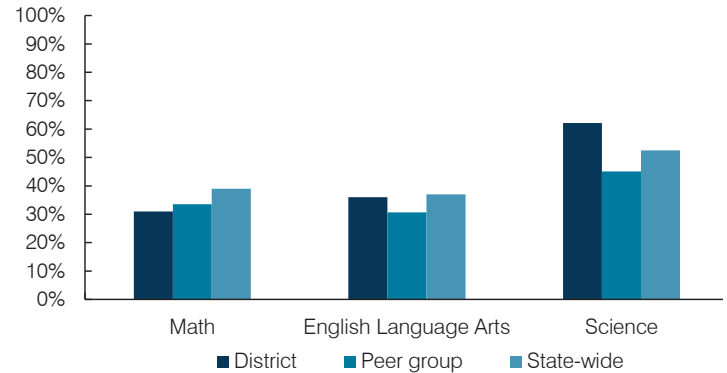
Very low   Low   Comparable   High   Very high

### Per pupil spending

Spending by area	District		Peer average 2017	State average 2017
	2016	2017		
Instruction	\$ 4,034	\$ 4,310	\$ 4,032	\$ 4,377
Administration	670	653	844	844
Plant operations	867	841	987	977
Food service	340	343	409	422
Transportation	373	374	414	381
Student support	372	460	607	679
Instruction support	437	385	481	461
<b>Total operational</b>	<b>\$ 7,093</b>	<b>\$ 7,366</b>	<b>\$ 7,774</b>	<b>\$ 8,141</b>
Land and buildings	\$ 181	\$ 111	\$ 346	\$ 691
Equipment	267	393	390	424
Interest	53	58	164	236
Other	58	54	77	161
<b>Total nonoperational</b>	<b>\$ 559</b>	<b>\$ 616</b>	<b>\$ 977</b>	<b>\$ 1,512</b>
<b>Total per pupil spending</b>	<b>\$ 7,652</b>	<b>\$ 7,982</b>	<b>\$ 8,751</b>	<b>\$ 9,653</b>

## STUDENT ACHIEVEMENT, STUDENT AND TEACHER MEASURES, AND REVENUES

### Students who passed state assessments



### Student and teacher measures

Measure	District	Peer average	State average
Attendance rate	92%	94%	94%
Graduation rate (2016)	81%	84%	80%
Poverty rate (2016)	30%	32%	22%
Special education population	13%	14%	12%
Students per teacher	18.0	16.4	18.5
Average teacher salary	\$42,077	\$44,227	\$48,372
Amount from Prop 301	\$7,430	\$5,336	\$5,840
Average years of teacher experience	10.3	12.6	11.3
Percentage of teachers in first 3 years	21%	17%	19%

### Per pupil revenues

Revenues by source	District		Peer average 2017	State average 2017
	2016	2017		
Federal	\$ 888	\$ 1,032	\$ 2,260	\$ 1,318
State	3,279	3,284	4,086	3,831
Local	3,719	3,750	3,104	4,443
<b>Total per pupil revenues</b>	<b>\$ 7,886</b>	<b>\$ 8,066</b>	<b>\$ 9,450</b>	<b>\$ 9,592</b>

#### Select revenues from common sources

	District	Peer average	State average
Equalization formula funding	\$ 5,333	\$ 5,265	\$ 5,373
Amount from Prop 123	237	233	233
Prop 123 additional funding	47	44	46
Grants	1,092	1,174	1,374
Donations and tax credits	45	47	56

#### Select revenues from less common sources

	District	Peer average	State average
Desegregation	\$ 0	\$ 0	1 of 18
Small school adjustment	0	0	0 of 18
Federal impact aid	0	0	7 of 18
Voter-approved levy increases	369	13	14 of 18

<sup>1</sup> See Appendix A for information such as districts included in each peer group and Appendix B for sources and methodology.

**Instructional spending percentage**

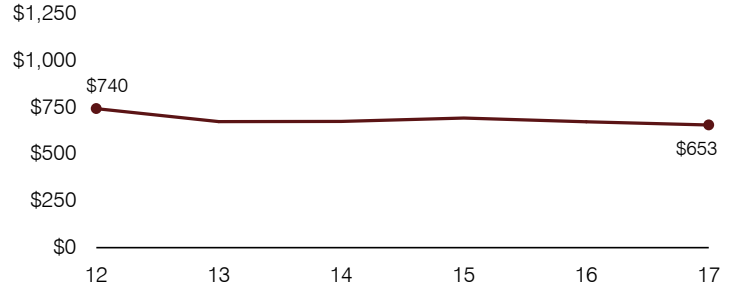
Year:	2001	2002	2003	2004	2005	2006	2007	2008	2009	2010	2011	2012	2013	2014	2015	2016	2017
Percentage:	57.9	61.4	59.4	60.3	59.1	56.7	55.0	56.5	54.9	55.6	54.3	52.8	55.4	57.0	56.2	56.9	58.5

**OPERATIONAL TRENDS AND FINANCIAL STRESS ASSESSMENT**  
Fiscal years as indicated

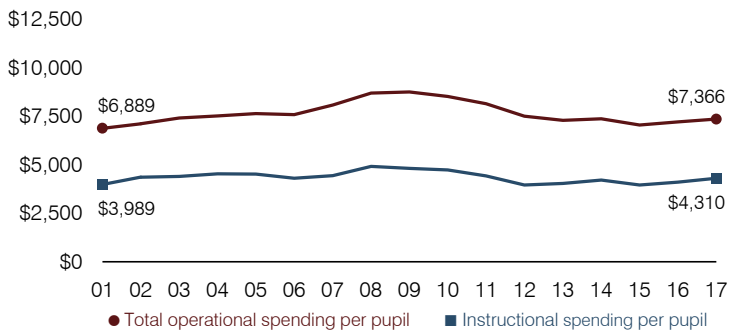
**5-year spending trend (2012 through 2017)**

Total operational spending per pupil, adjusted for inflation, decreased by 2 percent. The percentage of dollars spent on instruction increased overall from 52.8 to 58.5 percent. Overall, as a percentage of total operational spending, plant operations and instruction support decreased substantially, administration decreased, and food service decreased slightly.

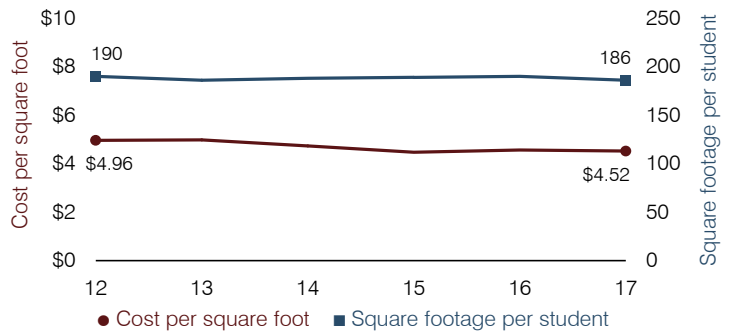
**Administrative cost per pupil**



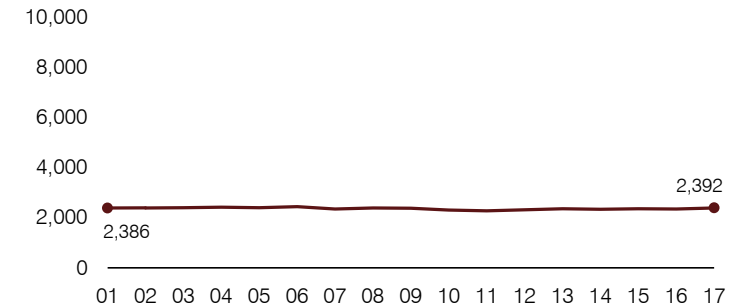
**Total operational and instructional spending per pupil (inflation adjusted to 2017 dollars)**



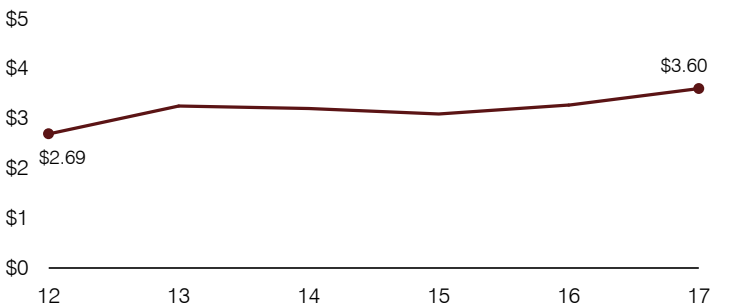
**Plant cost per square foot and square footage per student**



**Students attending**



**Food service cost per meal**



**Financial stress assessment**

Overall financial stress level: **Moderate**

Measure: 2015 through 2017

	Assessment
Change in number of district students	Steady
Spending exceeded operating/capital budgets	Isolated
Spending increase election results	Voter-approved
Operating reserve percentage, Trend	4.8%, Varying
Years of capital reserve held	1 to 3 years
Current financial and internal control status	Noncompliant

Low	Moderate	High
-----	----------	------

**Transportation costs per mile and per rider**

