

Scottsdale Unified School District

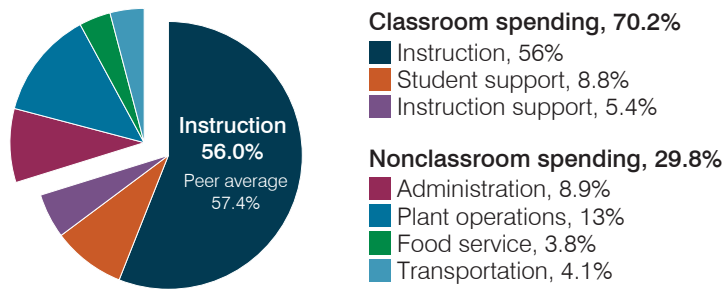
Maricopa County
 Peer groups: Operational 1 and T-4, Achievement 2¹
 Legislative district(s): 23, 24, 26, and 28
 District location: City
 Number of schools: 29
 Graduation rate (2018): 92%

Students attending; Size: 21,643; Very large
 5-year change in students attending: 10% decrease
 Special education population: 10%
 English learner population: 3%
 Poverty rate (2018): 8%
 Free/reduced meal eligibility: 24%

Instructional spending percentage by year

2001	2002	2003	2004	2005	2006	2007	2008	2009	2010	2011	2012	2013	2014	2015	2016	2017	2018	2019
58.6	59.0	61.5	63.7	62.3	60.5	61.3	60.4	57.7	59.5	57.7	58.7	57.9	54.5	53.9	53.6	53.6	54.4	56.0

Spending by operational area



Operational measures relative to peer averages

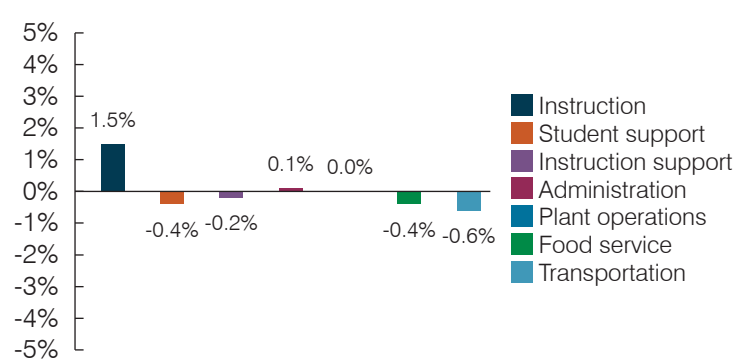
Operational area	Measure	District	Peer average	State average
Administration	Cost per pupil	\$787	\$746	\$903
	Students per administrative position	77	78	66
Plant operations	Cost per square foot	\$6.01	\$6.37	\$6.49
	Square footage per student	191	150	158
Food service	Cost per meal	\$2.54	\$2.92	\$3.08
Transportation	Cost per mile	\$4.59	\$4.02	\$4.29
	Cost per rider	\$1,564	\$1,407	\$1,424



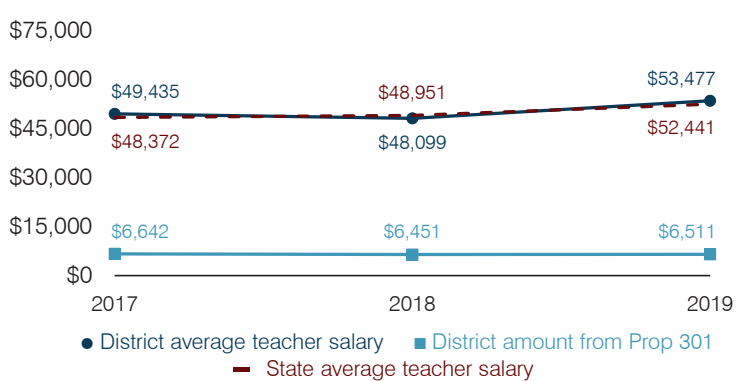
Per pupil spending

Spending by area	District		Peer average 2019	State average 2019
	2018	2019		
Instruction	\$ 4,400	\$ 4,945	\$ 4,901	\$ 4,869
Student support	706	779	773	754
Instruction support	431	472	427	497
Administration	762	787	746	903
Plant operations	1,160	1,147	949	1,027
Food service	318	338	341	438
Transportation	317	360	381	417
Total operational	8,094	8,828	8,518	8,905
Land and buildings	1,764	1,316	658	1,086
Equipment	551	563	376	496
Interest	363	603	288	261
Other	236	264	217	180
Total nonoperational	2,914	2,746	1,539	2,023
Total per pupil spending	\$ 11,008	\$ 11,574	\$ 10,057	\$ 10,928

Percentage point change in spending by operational area (fiscal year 2014 versus 2019)

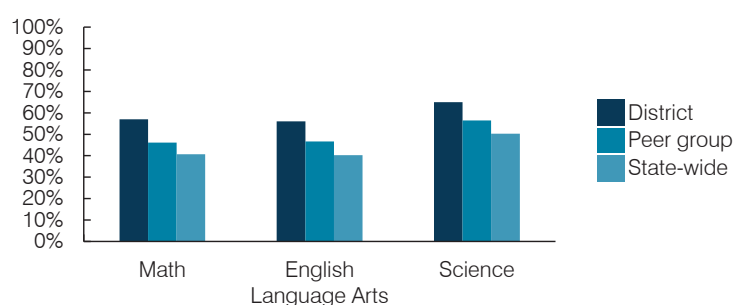


Average teacher salary and other measures



Measure	2017	2018	2019
Students per teacher	18.3	17.3	17.2
Average years of teacher experience	13.9	13.5	13.6
Percentage of teachers in first 3 years	13%	20%	19%

Students who passed State assessments²



¹ See Appendix A for information, such as districts included in each peer group, and Appendix B for sources and methodology.
² School letter grades are available at <https://azreportcards.azed.gov>.