

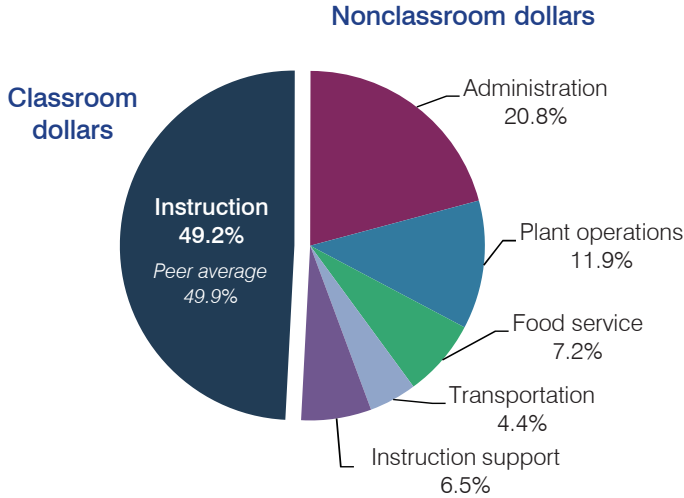
Santa Cruz Elementary School District

Santa Cruz County
 Efficiency peer groups 11 and T-11, Achievement peer group 18
 Legislative district(s): 2

District size, location: Very small, Rural
 Students attending: 185
 Number of schools: 1

OPERATIONAL EFFICIENCY

Spending by operational area



Efficiency measures relative to peer averages

Operational area	Measure	District	Peer average	State average
Administration	Cost per pupil	\$2,068	\$3,013	\$780
	Students per administrative position	46	29	67
Plant operations	Cost per square foot	\$9.77	\$6.80	\$6.09
	Square footage per student	121	370	153
Food service	Cost per meal equivalent	\$4.08	\$5.66	\$2.79
Transportation	Cost per mile	\$0.93	\$1.55	\$3.66
	Cost per rider	\$634	\$1,620	\$1,071

Per pupil spending

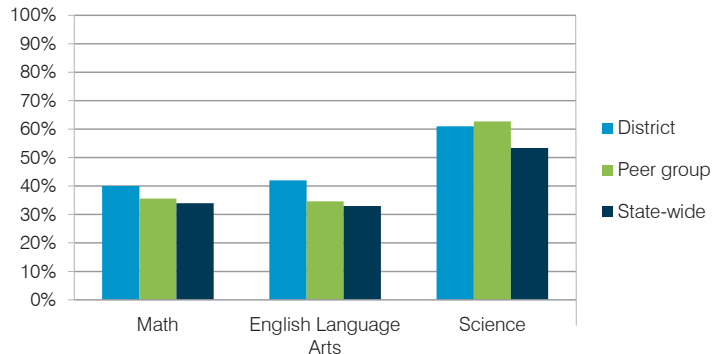
Spending by area	District		Peer average	State average
	2014	2015	2015	2015
Instruction	\$ 6,733	\$ 4,881	\$ 8,258	\$ 4,105
Administration	2,481	2,068	3,013	780
Plant operations	1,439	1,184	2,390	930
Food service	716	712	967	417
Transportation	541	441	1,127	371
Student support	0	0	664	613
Instruction support	408	641	572	442
Total operational	\$ 12,318	\$ 9,927	\$ 16,991	\$ 7,658
Land and buildings	\$ 1,421	\$ 220	\$ 961	\$ 641
Equipment	78	0	582	383
Interest	0	0	40	225
Other	0	0	90	150
Total nonoperational	\$ 1,499	\$ 220	\$ 1,673	\$ 1,399
Total per pupil spending	\$ 13,817	\$ 10,147	\$ 18,664	\$ 9,057

STUDENT AND TEACHER MEASURES, FINANCIAL ASSESSMENT, AND REVENUE

Student and teacher measures

Measure	District	Peer average	State average
Attendance rate	94%	94%	94%
Graduation rate (2014)	N/A	N/A	N/A
Poverty rate (2014)	28%	25%	23%
Students per teacher	14.3	12.5	18.6
Average teacher salary	\$48,320	\$46,197	\$46,008
Average years of teacher experience	8.6	11.8	11.0
Percentage of teachers in first 3 years	31%	20%	20%

Students who met state standards



Financial stress assessment

Overall financial stress level: **Moderate**

Measure: 2013 through 2015	Assessment
Change in number of district students	Increase
Spending exceeded operating/capital budgets	Capital only
Spending increase election results	No election held
Operating reserve percentage (max. 4%), trend	1.2%, Decreasing
Years of capital reserve held	1 to 3 years
Current financial and internal control status	Compliant

Low Moderate High

Per pupil revenues

Revenues by source	District		Peer average	State average
	2014	2015	2015	2015
Federal	\$ 1,156	\$ 1,858	\$ 2,858	\$ 1,299
State	5,734	6,332	4,521	3,517
Local	1,994	1,976	13,591	4,248
Total revenues per pupil	\$ 8,884	\$ 10,166	\$ 20,970	\$ 9,064
Select revenues from common sources				
Equalization formula funding	\$ 7,040	\$ 7,026	\$ 9,139	\$ 5,303
Grants	1,156	1,858	3,089	1,167
Donations and tax credits	29	5	159	78
Select revenues from less common sources				
Number of peers receiving				
Desegregation	\$ 0	\$ 0	0 of 53	
Small school adjustment	0	0	41 of 53	
Federal impact aid	0	0	3 of 53	
Voter-approved levy increases	0	0	7 of 53	

Santa Cruz ESD—page 2

Classroom dollar percentage

Year:	2001	2002	2003	2004	2005	2006	2007	2008	2009	2010	2011	2012	2013	2014	2015
Percentage:	68.6	70.4	68.6	65.7	70.4	60.9	56.8	58.8	59.7	54.7	52.1	51.5	55.2	54.7	49.2

OPERATIONAL TRENDS Fiscal years as indicated

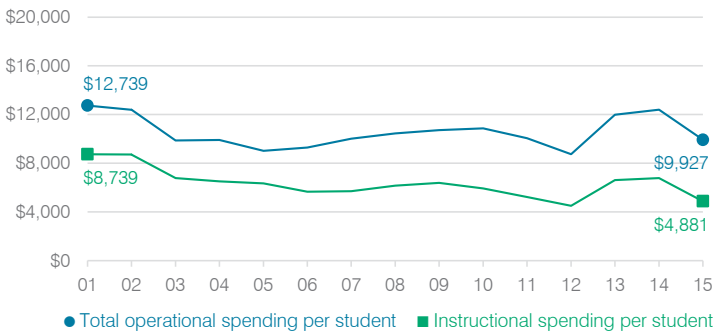
5-year spending trend (2010 through 2015)

Total operational spending per pupil, adjusted for inflation, decreased by 9 percent. The percentage of dollars spent in the classroom decreased overall from 54.7 to 49.2 percent. As a percentage of total operational spending, all nonclassroom areas varied year to year, as is common for very small districts. Overall, administration increased substantially and food service increased, while instruction support decreased substantially.

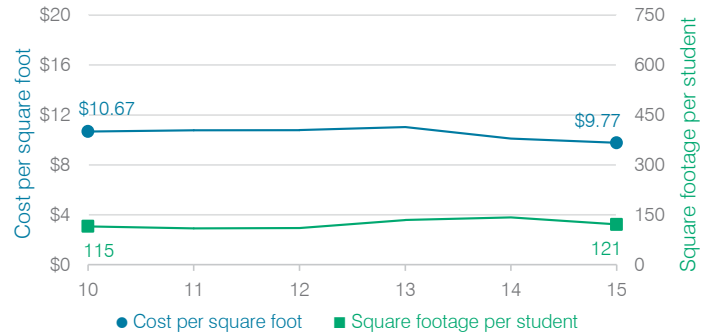
Administrative cost per student



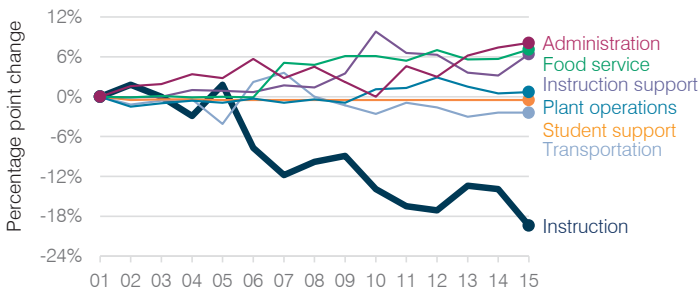
Total operational and instructional spending per student (inflation adjusted to 2015 dollars)



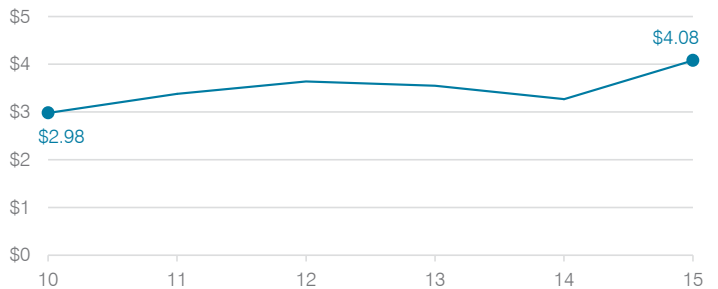
Plant cost per square foot and square footage per student



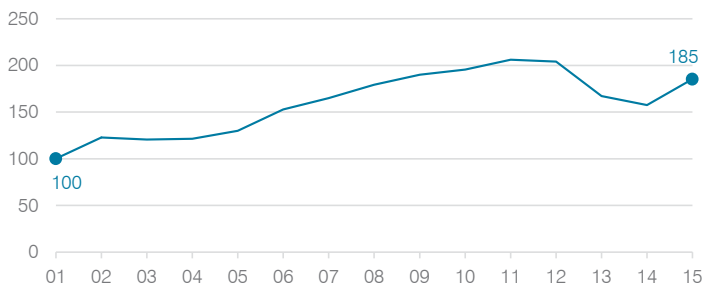
Changes in operational spending percentages



Food service cost per meal



Students attending



Transportation costs per mile and per rider

