

Safford Unified School District

Graham County

Efficiency peer groups 4 and T-6, Achievement peer group 5¹

Legislative district(s): 14

District size, location: Medium-large, Town

Students attending: 2,906

Number of schools: 6

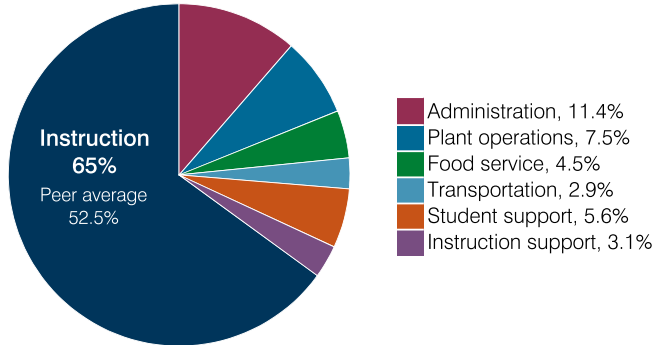
Medium-large, Town

2,906

6

OPERATIONAL EFFICIENCY

Spending by operational area



Efficiency measures relative to peer averages

Operational area	Measure	District	Peer average	State average
Administration	Cost per pupil	\$825	\$837	\$860
	Students per administrative position	69	69	66
Plant operations	Cost per square foot	\$3.34	\$5.61	\$6.34
	Square footage per student	165	184	156
Food service	Cost per meal	\$2.68	\$3.16	\$3.02
	Cost per mile	\$3.54	\$3.96	\$4.05
Transportation	Cost per rider	\$650	\$721	\$1,301

Very low Low Comparable High Very high

Per pupil spending

Spending by area	District		Peer average 2018	State average 2018
	2017	2018		
Instruction	\$ 4,776	\$ 4,754	\$ 4,194	\$ 4,480
Administration	879	825	837	860
Plant operations	587	551	1,004	988
Food service	346	332	421	425
Transportation	186	211	418	388
Student support	375	409	643	693
Instruction support	255	230	480	462
Total operational	7,404	7,312	7,997	8,296
Land and buildings	673	920	570	827
Equipment	535	358	389	409
Interest	16	52	200	228
Other	30	32	69	169
Total nonoperational	1,254	1,362	1,228	1,633
Total per pupil spending	\$ 8,658	\$ 8,674	\$ 9,225	\$ 9,929

¹ See Appendix A for information such as districts included in each peer group and Appendix B for sources and methodology.

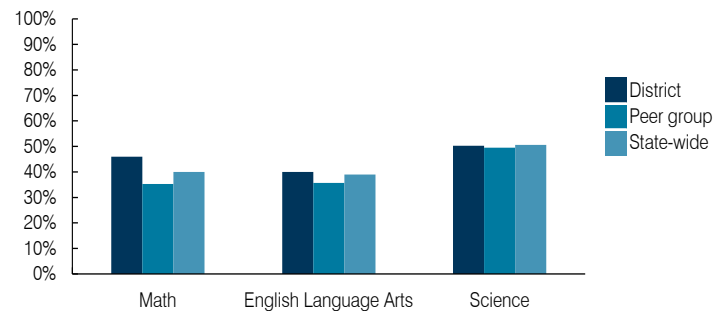
STUDENT ACHIEVEMENT, STUDENT AND TEACHER MEASURES, AND REVENUES

ADE-assigned school letter grades

Grade	Number of schools ²	Percentage of schools
A	1	20%
B	4	80%
C	0	0%
D	0	0%
F	0	0%

² Excludes schools for which letter grades were not published by ADE. See Appendix B for more information.

Students who passed State assessments



Student and teacher measures

Measure	District	Peer average	State average
Attendance rate	94%	93%	94%
Graduation rate (2017)	81%	86%	78%
Poverty rate (2017)	25%	22%	19%
Special education population	13%	13%	12%
Students per teacher	19.2	17.6	18.4
Average teacher salary	\$56,135	\$44,777	\$48,951
Amount from Prop 301	\$6,757	\$6,708	\$6,411
Average years of teacher experience	13.8	13.0	11.4
Percentage of teachers in first 3 years	20%	17%	19%

Per pupil revenues

Revenues by source	District		Peer average 2018	State average 2018
	2017	2018		
Federal	\$ 844	\$ 799	\$ 2,385	\$ 1,317
State	4,807	4,617	4,222	4,011
Local	2,292	2,289	3,291	4,592
Total per pupil revenues	\$ 7,943	\$ 7,705	\$ 9,898	\$ 9,920

Select revenues from common sources

Source	District	Peer average	State average
Equalization formula funding	\$ 5,154	\$ 5,074	\$ 5,443
Grants	1,474	1,174	1,552
Donations and tax credits	59	46	63

Select revenues from less common sources

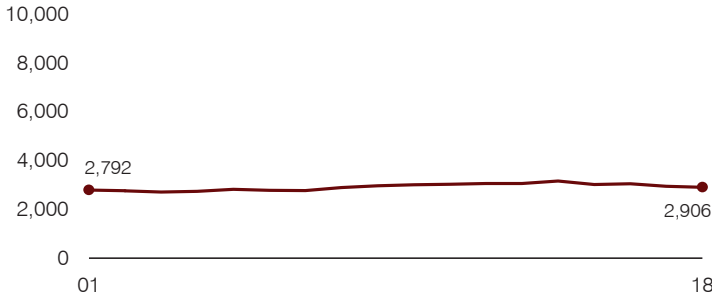
Source	District	Peer average	Number of peers receiving
Desegregation	\$ 0	\$ 0	1 of 17
Small school adjustment	0	0	0 of 17
Federal impact aid	0	0	6 of 17
Voter-approved levy increases	1	180	13 of 17

Instructional spending percentage

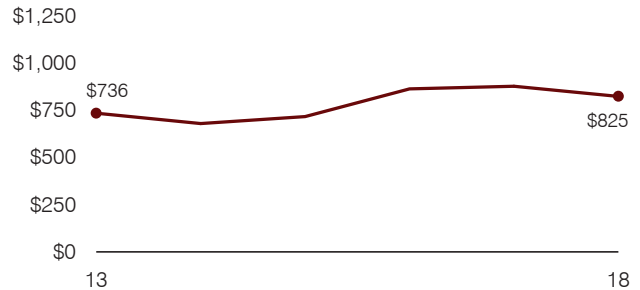
Year: 2001 2002 2003 2004 2005 2006 2007 2008 2009 2010 2011 2012 2013 2014 2015 2016 2017 2018
 Percentage: 58.3 59.8 58.7 59.1 58.1 60.4 60.0 62.7 63.1 60.9 62.8 61.2 63.5 65.1 66.2 63.3 64.5 65.0

TRENDS AND FINANCIAL STRESS ASSESSMENT
 Fiscal years as indicated

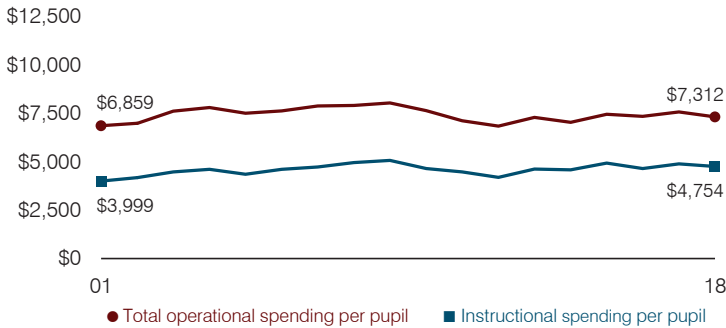
Students attending



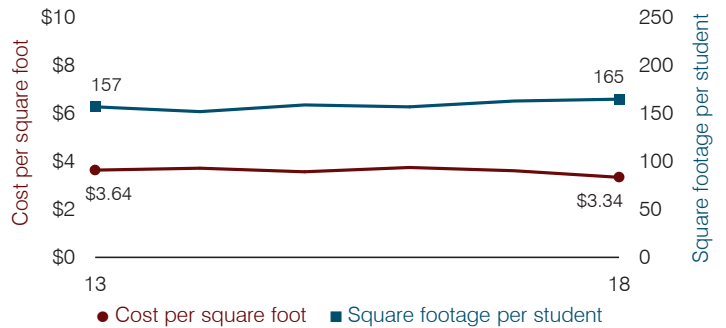
Administrative cost per pupil



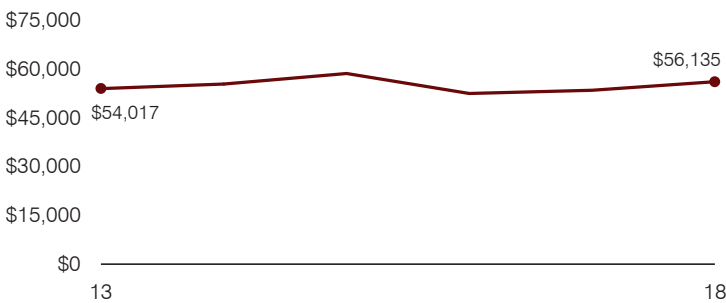
Total operational and instructional spending per pupil (inflation adjusted to 2018 dollars)



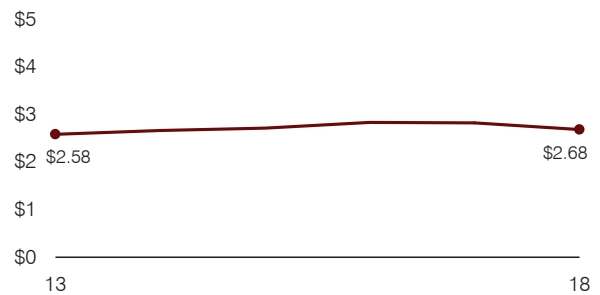
Plant cost per square foot and square footage per student



Average teacher salary



Food service cost per meal



Financial stress assessment

Overall financial stress level: **Moderate**

Measure: 2016 through 2018	Assessment
Change in number of district students	Moderate decrease
Spending exceeded operating/capital budgets	Operating and capital
Spending increase election results	Voter-approved
Operating reserve percentage, Trend	0.8%, Decreasing
Years of capital reserve held	1 to 3 years
Current financial and internal control status	Compliant

Low
Moderate
High

Transportation costs per mile and per rider

