

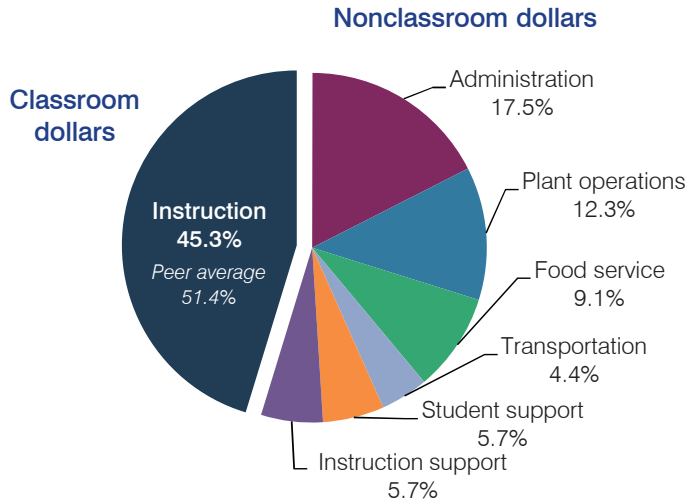
Riverside Elementary School District

Maricopa County
 Efficiency peer groups 8 and T-1, Achievement peer group 13
 Legislative district(s): 19

District size, location: Medium, City
 Students attending: 868
 Number of schools: 2

OPERATIONAL EFFICIENCY

Spending by operational area



Efficiency measures relative to peer averages

Operational area	Measure	District	Peer average	State average
Administration	Cost per pupil	\$1,487	\$918	\$780
	Students per administrative position	39	70	67
Plant operations	Cost per square foot	\$4.70	\$6.18	\$6.09
	Square footage per student	222	140	153
Food service	Cost per meal equivalent	\$2.96	\$2.61	\$2.79
Transportation	Cost per mile	\$5.31	\$6.37	\$3.66
	Cost per rider	\$664	\$837	\$1,071

Very low Low Comparable High Very high

Per pupil spending

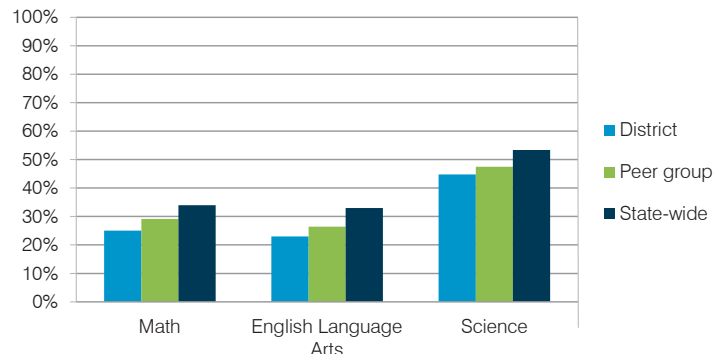
Spending by area	District		Peer average	State average
	2014	2015	2015	2015
Instruction	\$ 3,852	\$ 3,838	\$ 3,933	\$ 4,105
Administration	1,639	1,487	918	780
Plant operations	1,068	1,041	851	930
Food service	682	768	592	417
Transportation	367	373	295	371
Student support	543	481	564	613
Instruction support	543	481	484	442
Total operational	\$ 8,694	\$ 8,469	\$ 7,637	\$ 7,658
Land and buildings	\$ 2,841	\$ 3,763	\$ 1,094	\$ 641
Equipment	2,343	2,309	412	383
Interest	1,447	1,528	239	225
Other	7	330	136	150
Total nonoperational	\$ 6,638	\$ 7,930	\$ 1,881	\$ 1,399
Total per pupil spending	\$ 15,332	\$ 16,399	\$ 9,518	\$ 9,057

STUDENT AND TEACHER MEASURES, FINANCIAL ASSESSMENT, AND REVENUE

Student and teacher measures

Measure	District	Peer average	State average
Attendance rate	94%	94%	94%
Graduation rate (2014)	N/A	N/A	N/A
Poverty rate (2014)	28%	25%	23%
Students per teacher	18.9	19.6	18.6
Average teacher salary	\$37,317	\$41,292	\$46,008
Average years of teacher experience	9.0	7.7	11.0
Percentage of teachers in first 3 years	23%	34%	20%

Students who met state standards



Financial stress assessment

Overall financial stress level: **Low**

Measure: 2013 through 2015	Assessment
Change in number of district students	Increase
Spending exceeded operating/capital budgets	No overspending
Spending increase election results	Voter-approved
Operating reserve percentage (max. 4%), trend	2.0%, Increasing
Years of capital reserve held	More than 3 years
Current financial and internal control status	Compliant

Low Moderate High

Per pupil revenues

Revenues by source	District		Peer average	State average
	2014	2015	2015	2015
Federal	\$ 1,654	\$ 2,164	\$ 1,698	\$ 1,299
State	1,220	886	3,607	3,517
Local	13,747	13,781	4,048	4,248
Total revenues per pupil	\$ 16,621	\$ 16,831	\$ 9,353	\$ 9,064
Select revenues from common sources				
Equalization formula funding	\$ 4,952	\$ 4,931	\$ 4,908	\$ 5,303
Grants	1,844	2,423	1,782	1,167
Donations and tax credits	90	49	46	78
Select revenues from less common sources				
Desegregation	\$ 0	\$ 0	4 of 19	
Small school adjustment	0	0	0 of 19	
Federal impact aid	0	0	0 of 19	
Voter-approved levy increases	8,115	7,961	19 of 19	

Riverside ESD—page 2

Classroom dollar percentage

Year:	2001	2002	2003	2004	2005	2006	2007	2008	2009	2010	2011	2012	2013	2014	2015
Percentage:	48.5	49.0	57.3	58.6	53.8	52.4	50.2	57.5	57.7	51.5	46.0	46.0	45.8	44.3	45.3

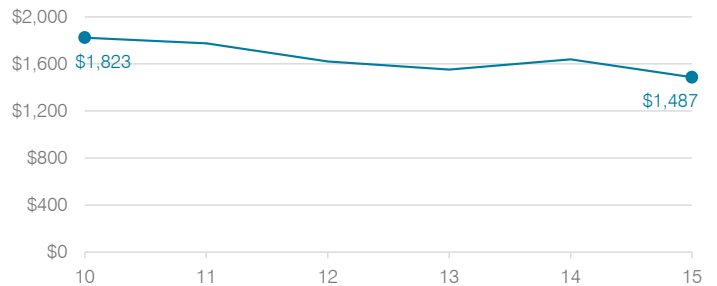
OPERATIONAL TRENDS

Fiscal years as indicated

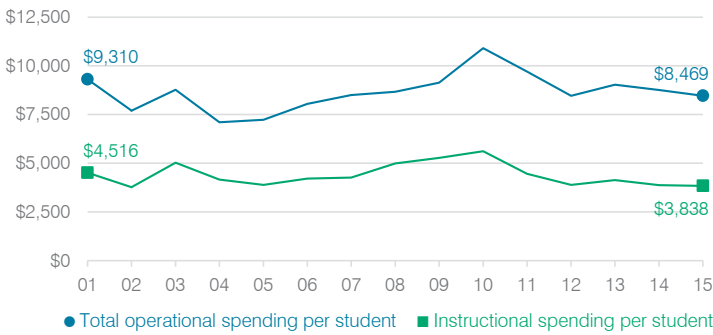
5-year spending trend (2010 through 2015)

Student enrollment increased 38 percent, which contributed to the 22 percent decrease in operational spending per pupil, adjusted for inflation. The percentage of dollars spent in the classroom varied year to year, decreasing overall from 51.5 to 45.3 percent. Overall, as a percentage of total operational spending, food service and instruction support increased substantially, plant operations increased slightly.

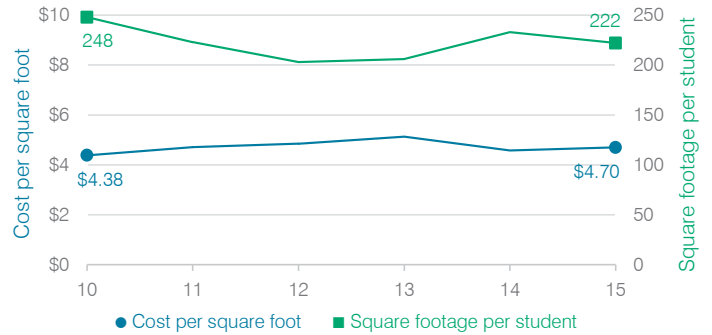
Administrative cost per student



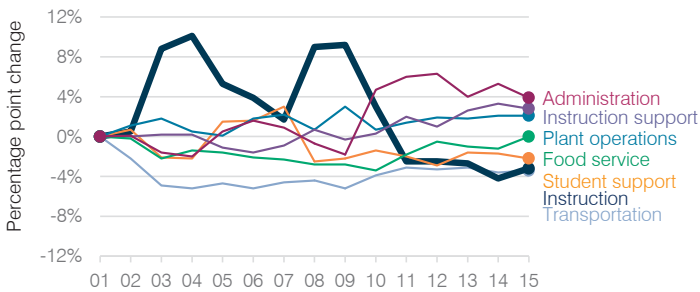
Total operational and instructional spending per student (inflation adjusted to 2015 dollars)



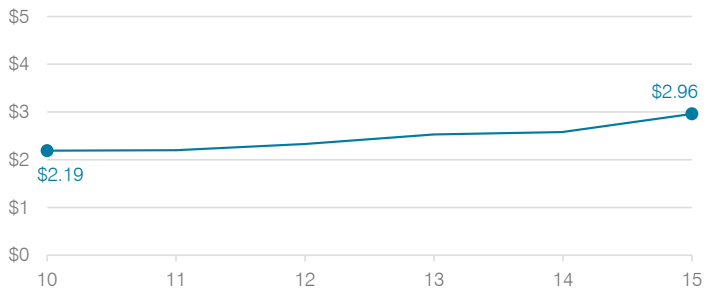
Plant cost per square foot and square footage per student



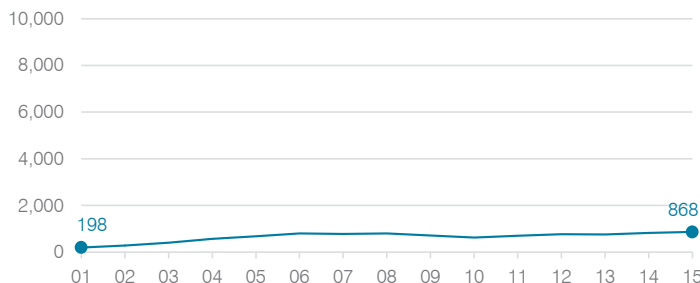
Changes in operational spending percentages



Food service cost per meal



Students attending



Transportation costs per mile and per rider

