

# Ray Unified School District

Pinal County

Efficiency peer groups 6 and T-10, Achievement peer group 4

Legislative district(s): 8

District size, location:

Small, Rural

Students attending:

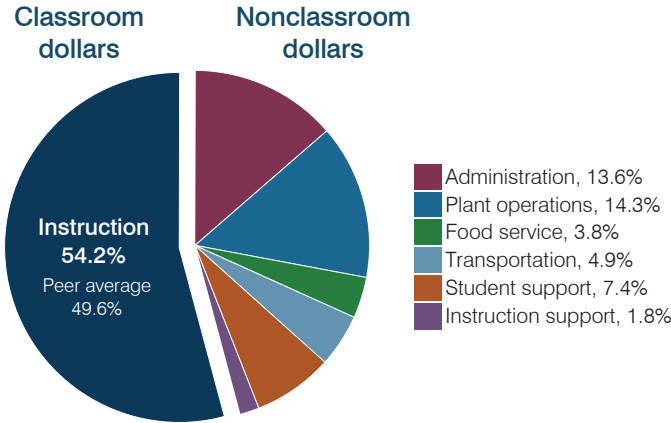
444

Number of schools:

2

## OPERATIONAL EFFICIENCY

### Spending by operational area



### Efficiency measures relative to peer averages

Operational area	Measure	District	Peer average	State average
Administration	Cost per pupil	\$1,290	\$1,647	\$806
	Students per administrative position	42	45	67
Plant operations	Cost per square foot	\$3.14	\$4.72	\$6.10
	Square footage per student	431	341	154
Food service	Cost per meal	\$3.34	\$3.52	\$2.81
Transportation	Cost per mile	\$2.02	\$1.89	\$3.72
	Cost per rider	\$955	\$1,242	\$1,092

### Per pupil spending

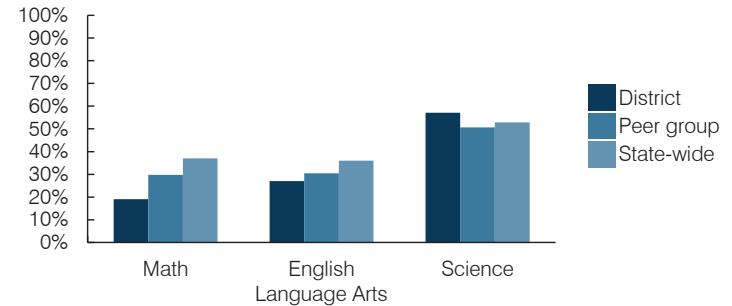
Spending by area	District		Peer average 2016	State average 2016
	2015	2016		
Instruction	\$ 5,003	\$ 5,130	\$ 5,245	\$ 4,145
Administration	1,340	1,290	1,647	806
Plant operations	1,390	1,354	1,511	939
Food service	380	358	496	415
Transportation	487	469	517	364
Student support	663	699	640	633
Instruction support	198	172	409	444
<b>Total operational</b>	<b>\$ 9,461</b>	<b>\$ 9,472</b>	<b>\$ 10,465</b>	<b>\$ 7,746</b>
Land and buildings	\$ 4	\$ 558	\$ 455	\$ 621
Equipment	255	330	488	400
Interest	56	42	158	216
Other	28	24	47	153
<b>Total nonoperational</b>	<b>\$ 343</b>	<b>\$ 954</b>	<b>\$ 1,148</b>	<b>\$ 1,390</b>
<b>Total per pupil spending</b>	<b>\$ 9,804</b>	<b>\$ 10,426</b>	<b>\$ 11,613</b>	<b>\$ 9,136</b>

## STUDENT AND TEACHER MEASURES, FINANCIAL ASSESSMENT, AND REVENUES

### Student and teacher measures

Measure	District	Peer average	State average
Attendance rate (2015)	95%	95%	94%
Graduation rate (2015)	87%	87%	78%
Poverty rate (2015)	19%	16%	23%
Students per teacher	13.4	15.3	18.6
Average teacher salary	\$43,289	\$43,729	\$46,384
Amount from Proposition 301	\$5,201	\$4,733	\$5,315
Average years of teacher experience	13.7	10.4	11.0
Percentage of teachers in first 3 years	21%	19%	20%

### Students who passed state assessments



### Financial stress assessment

Overall financial stress level: **Low**

Measure: 2014 through 2016

Assessment

Change in number of district students	Moderate decrease
Spending exceeded operating/capital budgets	No overspending
Spending increase election results	Voter-approved
Operating reserve percentage, Trend	5.8%, Increasing
Years of capital reserve held	1 to 3 years
Current financial and internal control status	Compliant

Low	Moderate	High
-----	----------	------

### Per pupil revenues

Revenues by source	District		Peer average 2016	State average 2016
	2015	2016		
Federal	\$ 1,411	\$ 1,517	\$ 2,338	\$ 1,301
State	4,049	4,507	3,632	3,780
Local	2,683	3,573	7,286	4,268
<b>Total revenues per pupil</b>	<b>\$ 8,143</b>	<b>\$ 9,597</b>	<b>\$ 13,256</b>	<b>\$ 9,349</b>

### Select revenues from common sources

Equalization formula funding	\$ 6,554	\$ 6,955	\$ 7,157	\$ 5,471
Grants	1,418	2,025	2,186	1,182
Donations and tax credits	129	90	264	86

### Select revenues from less common sources

			Number of peers receiving
Desegregation	\$ 0	\$ 0	0 of 20
Small school adjustment	0	0	5 of 20
Federal impact aid	0	0	5 of 20
Voter-approved levy increases	1,128	1,221	15 of 20

**Classroom dollar percentage**

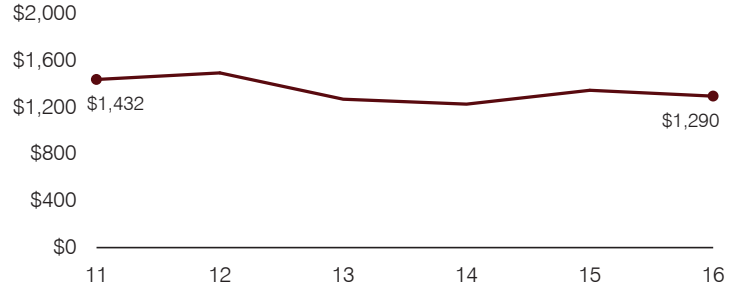
Year:	2001	2002	2003	2004	2005	2006	2007	2008	2009	2010	2011	2012	2013	2014	2015	2016
Percentage:	55.0	57.3	57.3	58.3	59.2	55.4	57.5	55.5	54.5	55.8	52.1	51.8	54.9	54.0	52.9	54.2

**OPERATIONAL TRENDS**  
Fiscal years as indicated

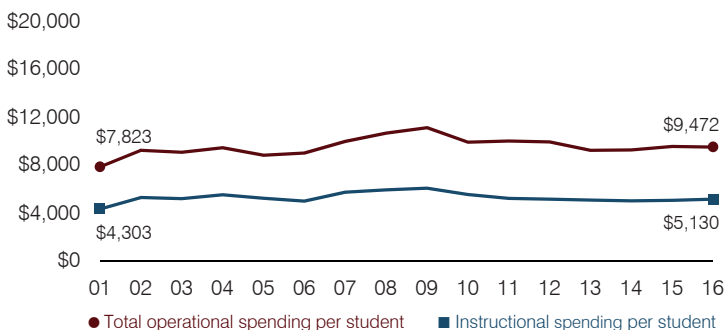
**5-year spending trend (2011 through 2016)**

Total operational spending per pupil, adjusted for inflation, decreased by 5 percent. The percentage of dollars spent in the classroom varied year to year, increasing overall from 52.1 to 54.2 percent. Overall, as a percentage of total operational spending, plant operations decreased substantially, administration decreased, and transportation decreased slightly, while student support increased substantially.

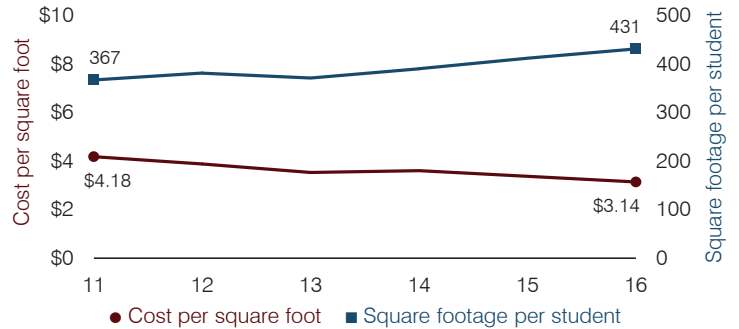
**Administrative cost per pupil**



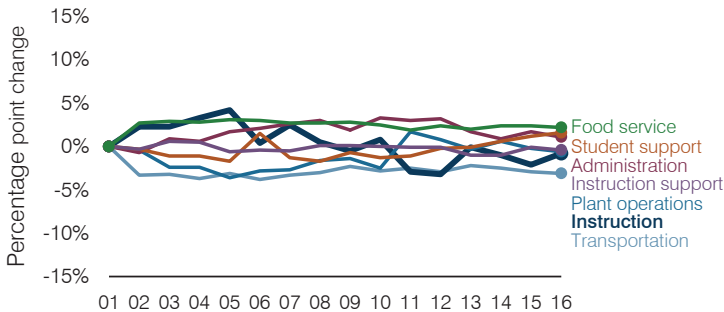
**Total operational and instructional spending per pupil (inflation adjusted to 2016 dollars)**



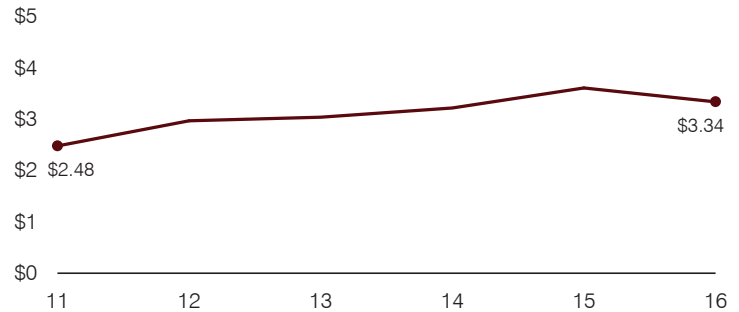
**Plant cost per square foot and square footage per student**



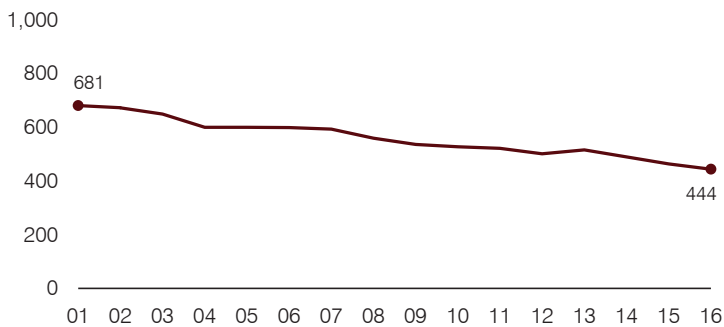
**Changes in operational spending percentages**



**Food service cost per meal**



**Students attending**



**Transportation costs per mile and per rider**

