

# Queen Creek Unified School District

Maricopa County

Efficiency peer groups 3 and T-3, Achievement peer group 2

Legislative district(s): 12 and 16

District size, location:

Medium-large, Suburb

Students attending:

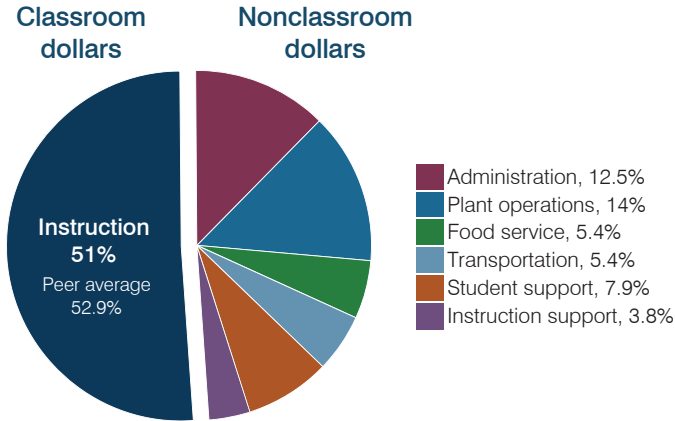
5,682

Number of schools:

8

## OPERATIONAL EFFICIENCY

### Spending by operational area



### Efficiency measures relative to peer averages

Operational area	Measure	District	Peer average	State average
Administration	Cost per pupil	\$827	\$846	\$806
	Students per administrative position	79	69	67
Plant operations	Cost per square foot	\$6.25	\$5.78	\$6.10
	Square footage per student	148	163	154
Food service	Cost per meal	\$3.10	\$2.98	\$2.81
Transportation	Cost per mile	\$3.25	\$3.92	\$3.72
	Cost per rider	\$723	\$970	\$1,092

Very low   Low   Comparable   High   Very high

### Per pupil spending

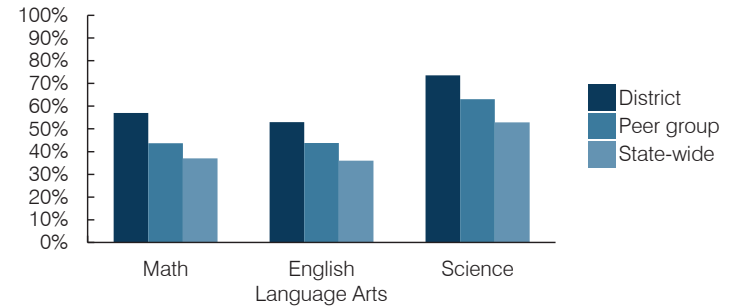
Spending by area	District		Peer average 2016	State average 2016
	2015	2016		
Instruction	\$ 3,408	\$ 3,368	\$ 3,774	\$ 4,145
Administration	798	827	846	806
Plant operations	905	924	923	939
Food service	403	360	314	415
Transportation	407	356	382	364
Student support	565	522	605	633
Instruction support	262	251	296	444
<b>Total operational</b>	<b>\$ 6,748</b>	<b>\$ 6,608</b>	<b>\$ 7,140</b>	<b>\$ 7,746</b>
Land and buildings	\$ 2,303	\$ 2,823	\$ 704	\$ 621
Equipment	276	317	259	400
Interest	306	377	191	216
Other	276	421	164	153
<b>Total nonoperational</b>	<b>\$ 3,161</b>	<b>\$ 3,938</b>	<b>\$ 1,318</b>	<b>\$ 1,390</b>
<b>Total per pupil spending</b>	<b>\$ 9,909</b>	<b>\$ 10,546</b>	<b>\$ 8,458</b>	<b>\$ 9,136</b>

## STUDENT AND TEACHER MEASURES, FINANCIAL ASSESSMENT, AND REVENUES

### Student and teacher measures

Measure	District	Peer average	State average
Attendance rate (2015)	94%	94%	94%
Graduation rate (2015)	91%	90%	78%
Poverty rate (2015)	11%	14%	23%
Students per teacher	20.4	18.6	18.6
Average teacher salary	\$42,001	\$44,519	\$46,384
Amount from Proposition 301	\$5,185	\$5,402	\$5,315
Average years of teacher experience	9.7	10.8	11.0
Percentage of teachers in first 3 years	17%	21%	20%

### Students who passed state assessments



### Financial stress assessment

Overall financial stress level: **Low**

Measure: 2014 through 2016

Measure	Assessment
Change in number of district students	Increase
Spending exceeded operating/capital budgets	No overspending
Spending increase election results	Mixed election results
Operating reserve percentage, Trend	4.2%, Increasing
Years of capital reserve held	More than 3 years
Current financial and internal control status	Compliant

Low   Moderate   High

### Per pupil revenues

Revenues by source	District		Peer average 2016	State average 2016
	2015	2016		
Federal	\$ 731	\$ 678	\$ 823	\$ 1,301
State	3,367	3,735	3,055	3,780
Local	4,267	3,966	4,806	4,268
<b>Total revenues per pupil</b>	<b>\$ 8,365</b>	<b>\$ 8,379</b>	<b>\$ 8,684</b>	<b>\$ 9,349</b>

### Select revenues from common sources

Source	District 2016	Peer average 2016	State average 2016
Equalization formula funding	\$ 5,227	\$ 5,452	\$ 5,498
Grants	850	804	891
Donations and tax credits	53	56	135

### Select revenues from less common sources

Source	District 2016	Peer average 2016	State average 2016
Desegregation	\$ 0	\$ 0	1 of 15
Small school adjustment	0	0	0 of 15
Federal impact aid	0	0	3 of 15
Voter-approved levy increases	1,249	997	14 of 15

**Classroom dollar percentage**

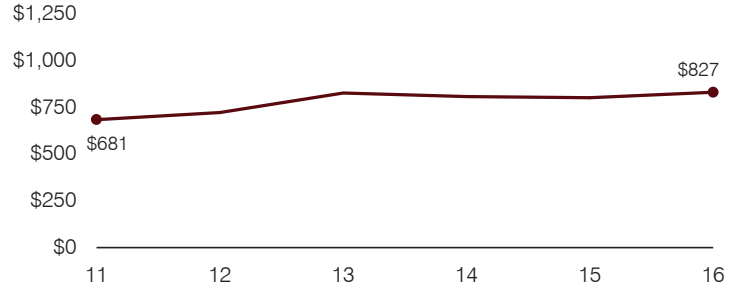
Year:	2001	2002	2003	2004	2005	2006	2007	2008	2009	2010	2011	2012	2013	2014	2015	2016
Percentage:	50.5	51.2	49.7	52.7	57.1	57.8	60.0	60.7	59.7	59.9	56.3	53.6	51.2	50.3	50.5	51.0

**OPERATIONAL TRENDS**  
Fiscal years as indicated

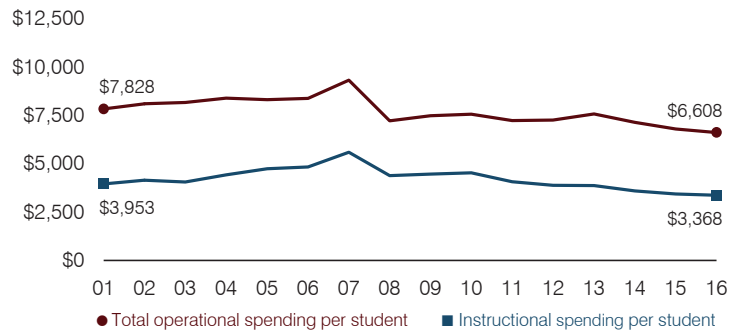
**5-year spending trend (2011 through 2016)**

Total operational spending per pupil, adjusted for inflation, decreased by 9 percent. The percentage of dollars spent in the classroom decreased overall from 56.3 to 51 percent. Overall, as a percentage of total operational spending, administration increased substantially, plant operations and instruction support increased, and student support increased slightly, while transportation decreased slightly.

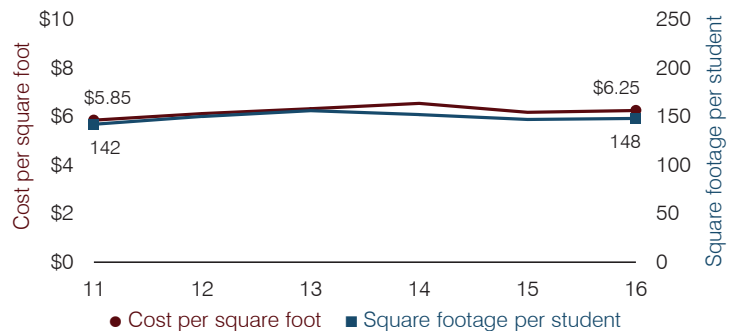
**Administrative cost per pupil**



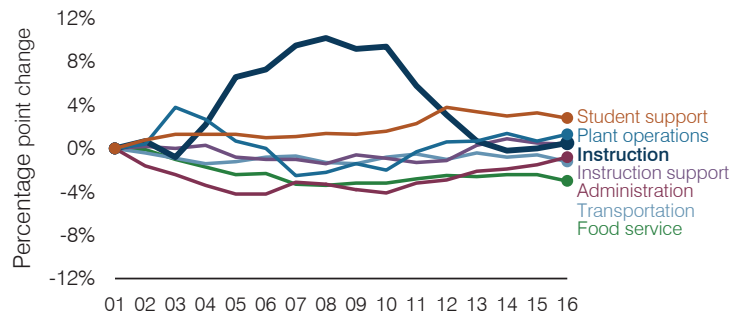
**Total operational and instructional spending per pupil (inflation adjusted to 2016 dollars)**



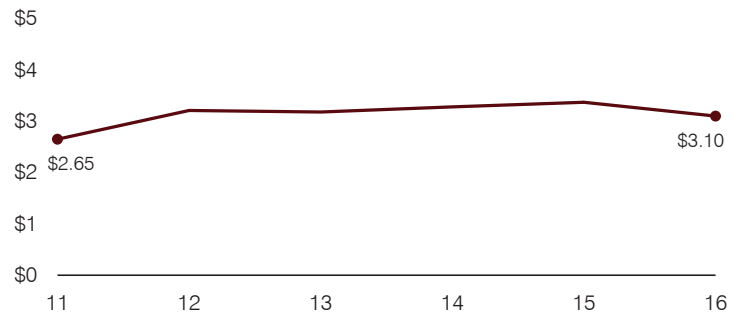
**Plant cost per square foot and square footage per student**



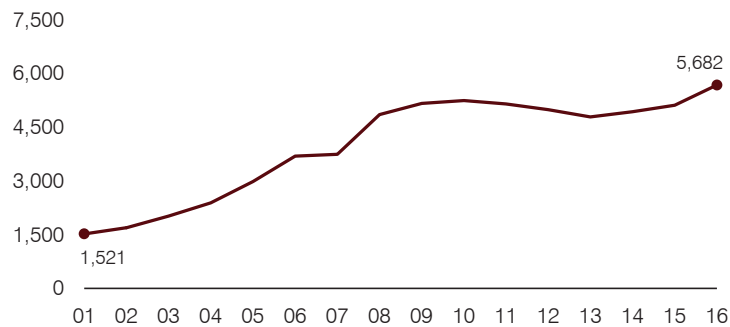
**Changes in operational spending percentages**



**Food service cost per meal**



**Students attending**



**Transportation costs per mile and per rider**

