

Pomerene Elementary School District

Cochise County

Efficiency peer groups 11 and T-11, Achievement peer group 18¹

Legislative district(s): 14

District size, location:

Very small, Rural

Students attending:

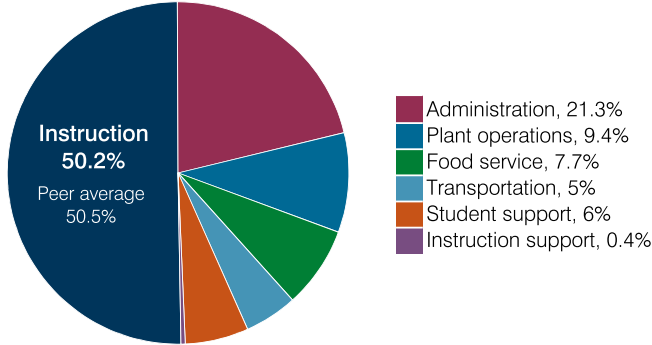
92

Number of schools:

1

OPERATIONAL EFFICIENCY

Spending by operational area



Efficiency measures relative to peer averages

Operational area	Measure	District	Peer average	State average
Administration	Cost per pupil	\$2,103	\$3,064	\$860
	Students per administrative position	32	33	66
Plant operations	Cost per square foot	\$2.95	\$7.31	\$6.34
	Square footage per student	314	371	156
Food service	Cost per meal	\$4.95	\$5.79	\$3.02
Transportation	Cost per mile	\$4.40	\$1.94	\$4.05
	Cost per rider	\$1,362	\$1,614	\$1,301

Per pupil spending

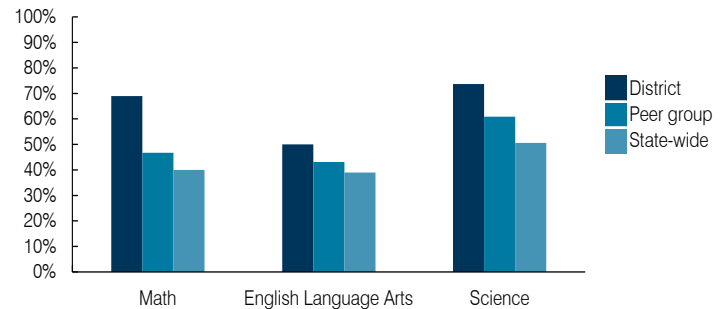
Spending by area	District		Peer average 2018	State average 2018
	2017	2018		
Instruction	\$ 4,411	\$ 4,965	\$ 8,493	\$ 4,480
Administration	2,123	2,103	3,064	860
Plant operations	937	929	2,439	988
Food service	674	767	932	425
Transportation	621	490	973	388
Student support	457	592	656	693
Instruction support	12	40	400	462
Total operational	9,235	9,886	16,957	8,296
Land and buildings	2,986	128	965	827
Equipment	1,248	509	562	409
Interest	0	0	25	228
Other	40	1	88	169
Total nonoperational	4,274	638	1,640	1,633
Total per pupil spending	\$ 13,509	\$ 10,524	\$ 18,597	\$ 9,929

STUDENT ACHIEVEMENT, STUDENT AND TEACHER MEASURES, AND REVENUES

ADE-assigned school letter grades

Grade	Number of schools	Percentage of schools
A	1	100%
B	0	0%
C	0	0%
D	0	0%
F	0	0%

Students who passed State assessments



Student and teacher measures

Measure	District	Peer average	State average
Attendance rate	95%	94%	94%
Graduation rate (2017)	N/A	N/A	N/A
Poverty rate (2017)	27%	25%	19%
Special education population	12%	17%	12%
Students per teacher	13.1	12.6	18.4
Average teacher salary	\$43,171	\$47,486	\$48,951
Amount from Prop 301	\$3,367	\$4,484	\$6,411
Average years of teacher experience	13.2	14.9	11.4
Percentage of teachers in first 3 years	0%	7%	19%

Per pupil revenues

Revenues by source	District		Peer average 2018	State average 2018
	2017	2018		
Federal	\$ 1,136	\$ 686	\$ 3,021	\$ 1,317
State	9,127	5,562	4,788	4,011
Local	3,678	3,473	12,812	4,592
Total per pupil revenues	\$ 13,941	\$ 9,721	\$ 20,621	\$ 9,920

Select revenues from common sources

Source	District	Peer average	State average
Equalization formula funding	\$ 6,252	\$ 6,548	\$ 8,282
Grants	4,093	829	3,020
Donations and tax credits	50	49	125

Select revenues from less common sources

Source	District	Peer average	State average
Desegregation	\$ 0	\$ 0	0 of 56
Small school adjustment	1,399	1,514	45 of 56
Federal impact aid	0	0	5 of 56
Voter-approved levy increases	0	0	5 of 56

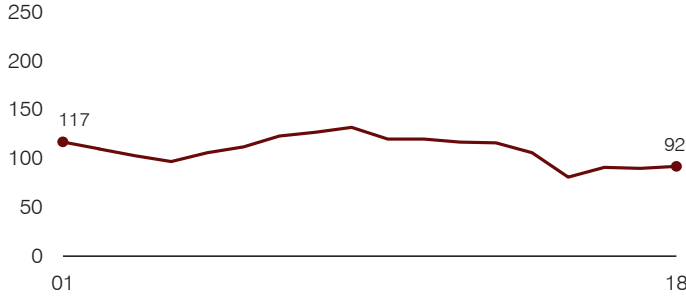
¹ See Appendix A for information such as districts included in each peer group and Appendix B for sources and methodology.

Instructional spending percentage

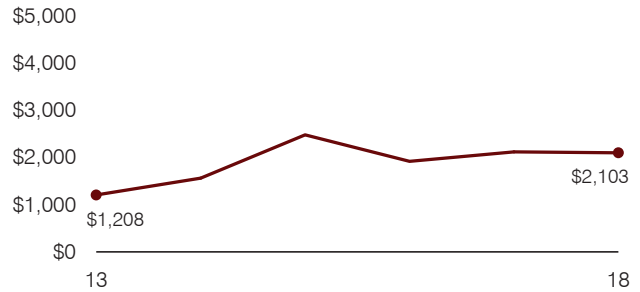
Year:	2001	2002	2003	2004	2005	2006	2007	2008	2009	2010	2011	2012	2013	2014	2015	2016	2017	2018
Percentage:	56.9	56.7	54.6	53.3	52.3	54.8	53.9	56.2	61.6	54.0	62.9	53.9	51.6	52.1	51.4	49.0	47.8	50.2

TRENDS AND FINANCIAL STRESS ASSESSMENT
Fiscal years as indicated

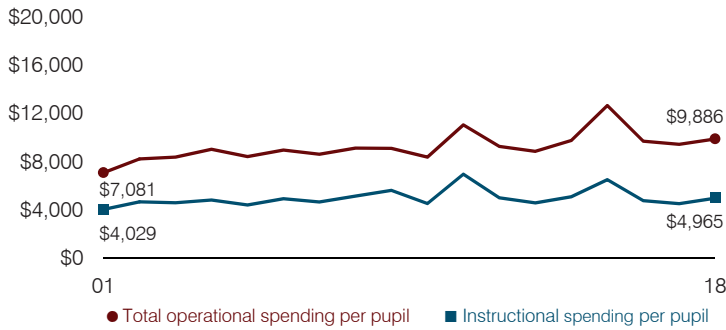
Students attending



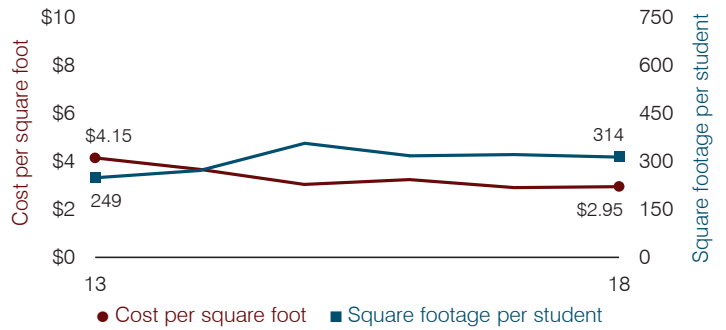
Administrative cost per pupil



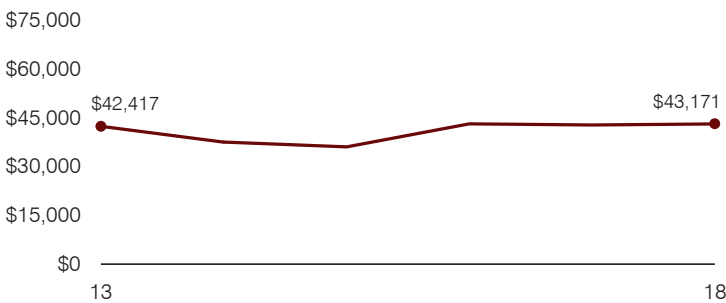
Total operational and instructional spending per pupil (inflation adjusted to 2018 dollars)



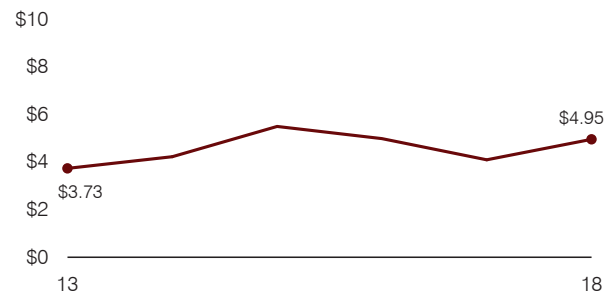
Plant cost per square foot and square footage per student



Average teacher salary



Food service cost per meal



Financial stress assessment

Overall financial stress level: Low

Measure: 2016 through 2018	Assessment
Change in number of district students	Small school adjustment
Spending exceeded operating/capital budgets	No overspending
Spending increase election results	No election held
Operating reserve percentage, Trend	4.4%, Decreasing
Years of capital reserve held	More than 3 years
Current financial and internal control status	Compliant

Low
Moderate
High

Transportation costs per mile and per rider

