

Phoenix Union High School District

Maricopa County

Efficiency peer groups 1 and T-5, Achievement peer group 9¹

Legislative district(s): 19, 24, 27, 28, 29, and 30

District size, location:

Very large, City

Students attending:

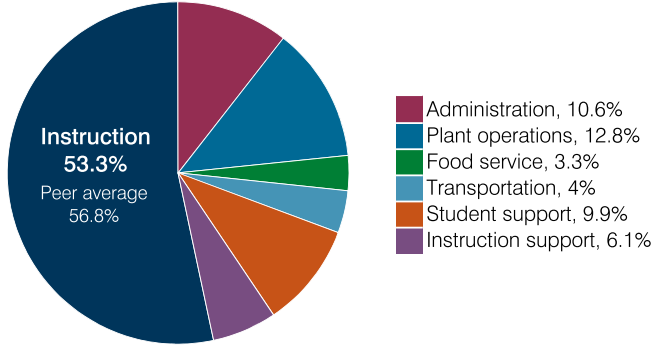
26,952

Number of schools:

17

OPERATIONAL EFFICIENCY

Spending by operational area



Efficiency measures relative to peer averages

Operational area	Measure	District	Peer average	State average
Administration	Cost per pupil	\$1,154	\$712	\$860
	Students per administrative position	42	80	66
Plant operations	Cost per square foot	\$8.41	\$6.18	\$6.34
	Square footage per student	165	149	156
Food service	Cost per meal	\$2.64	\$2.87	\$3.02
Transportation	Cost per mile	N/A	\$3.90	\$4.05
	Cost per rider	\$1,011	\$1,931	\$1,301

Very low
Low
Comparable
High
Very high

Per pupil spending

Spending by area	District		Peer average 2018	State average 2018
	2017	2018		
Instruction	\$ 5,805	\$ 5,783	\$ 4,531	\$ 4,480
Administration	1,056	1,154	712	860
Plant operations	1,448	1,385	916	988
Food service	392	363	331	425
Transportation	412	435	358	388
Student support	1,110	1,074	704	693
Instruction support	615	659	395	462
Total operational	10,838	10,853	7,947	8,296
Land and buildings	819	1,944	631	827
Equipment	598	595	317	409
Interest	468	418	232	228
Other	46	43	207	169
Total nonoperational	1,931	3,000	1,387	1,633
Total per pupil spending	\$ 12,769	\$ 13,853	\$ 9,334	\$ 9,929

¹ See Appendix A for information such as districts included in each peer group and Appendix B for sources and methodology.

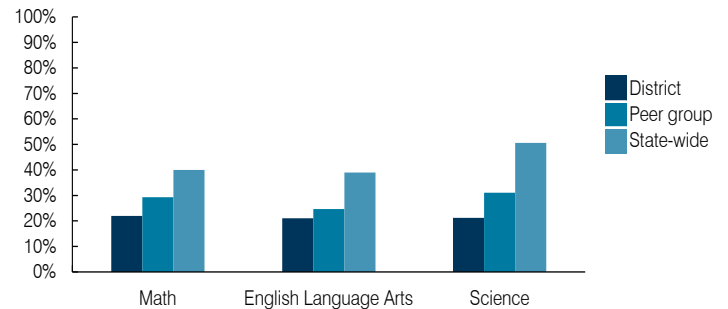
STUDENT ACHIEVEMENT, STUDENT AND TEACHER MEASURES, AND REVENUES

ADE-assigned school letter grades

Grade	Number of schools ²	Percentage of schools
A	2	14%
B	2	14%
C	6	43%
D	4	29%
F	0	0%

² Excludes schools for which letter grades were not published by ADE. See Appendix B for more information.

Students who passed State assessments



Student and teacher measures

Measure	District	Peer average	State average
Attendance rate	89%	93%	94%
Graduation rate (2017)	83%	88%	78%
Poverty rate (2017)	28%	26%	19%
Special education population	11%	10%	12%
Students per teacher	17.7	21.4	18.4
Average teacher salary	\$62,828	\$58,092	\$48,951
Amount from Prop 301	\$7,838	\$8,795	\$6,411
Average years of teacher experience	13.3	12.0	11.4
Percentage of teachers in first 3 years	10%	18%	19%

Per pupil revenues

Revenues by source	District		Peer average 2018	State average 2018
	2017	2018		
Federal	\$ 1,485	\$ 1,348	\$ 875	\$ 1,317
State	2,852	2,995	3,546	4,011
Local	8,343	8,891	5,443	4,592
Total per pupil revenues	\$ 12,680	\$ 13,234	\$ 9,864	\$ 9,920

Select revenues from common sources

Equalization formula funding	\$ 5,636	\$ 5,842	\$ 5,492	\$ 5,585
Grants	1,516	1,386	937	1,241
Donations and tax credits	28	28	94	90

Select revenues from less common sources

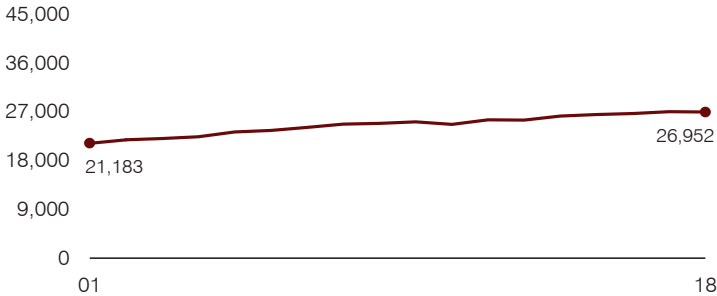
			Number of peers receiving
Desegregation	\$ 2,029	\$ 2,070	4 of 10
Small school adjustment	0	0	0 of 10
Federal impact aid	0	0	2 of 10
Voter-approved levy increases	2,674	2,795	10 of 10

Instructional spending percentage

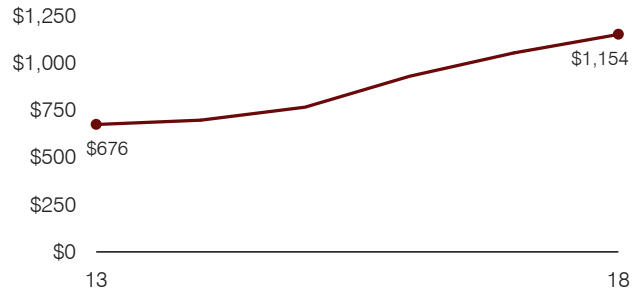
Year: 2001 2002 2003 2004 2005 2006 2007 2008 2009 2010 2011 2012 2013 2014 2015 2016 2017 2018
 Percentage: 52.5 52.0 53.1 54.3 55.3 56.8 57.1 56.1 55.6 54.9 56.2 54.5 55.0 54.7 55.4 54.0 53.6 53.3

TRENDS AND FINANCIAL STRESS ASSESSMENT
 Fiscal years as indicated

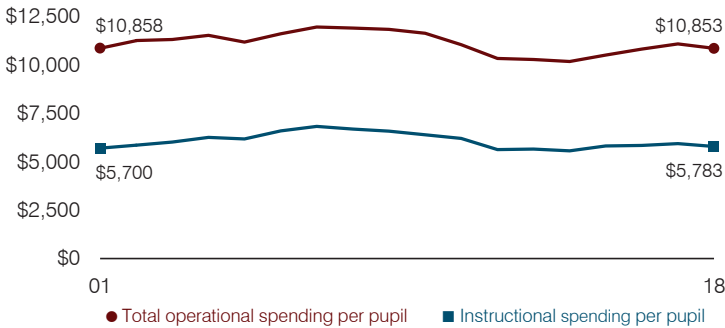
Students attending



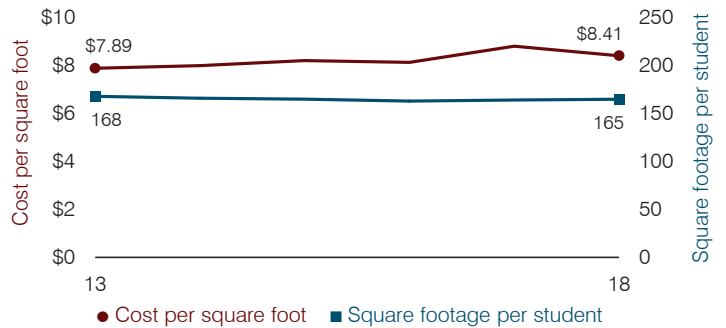
Administrative cost per pupil



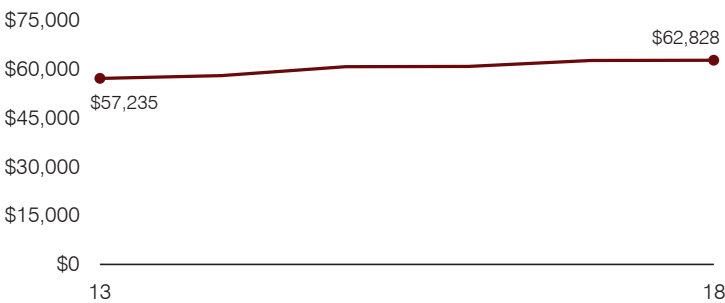
Total operational and instructional spending per pupil (inflation adjusted to 2018 dollars)



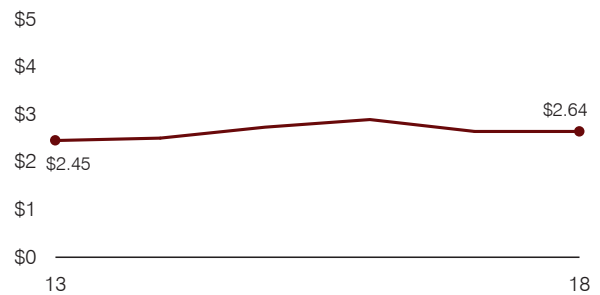
Plant cost per square foot and square footage per student



Average teacher salary



Food service cost per meal



Financial stress assessment

Overall financial stress level: **Low**

Measure: 2016 through 2018	Assessment
Change in number of district students	Steady
Spending exceeded operating/capital budgets	No overspending
Spending increase election results	Voter-approved
Operating reserve percentage, Trend	4.7%, Varying
Years of capital reserve held	More than 3 years
Current financial and internal control status	Compliant

Low **Moderate** **High**

Transportation costs per mile and per rider

