

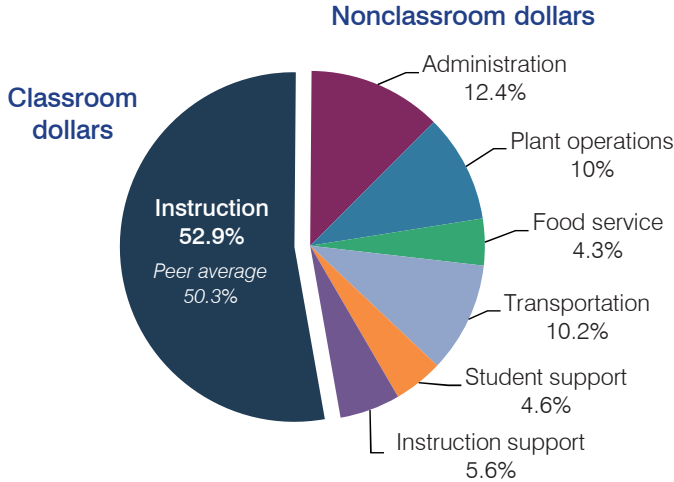
# Palominas Elementary School District

Cochise County  
 Efficiency peer groups 9 and T-8, Achievement peer group 18  
 Legislative district(s): 14

District size, location: Medium, Rural  
 Students attending: 989  
 Number of schools: 3

## OPERATIONAL EFFICIENCY

### Spending by operational area



### Efficiency measures relative to peer averages

Operational area	Measure	District	Peer average	State average
Administration	Cost per pupil	\$1,058	\$1,036	\$780
	Students per administrative position	64	59	67
Plant operations	Cost per square foot	\$6.51	\$6.51	\$6.09
	Square footage per student	131	143	153
Food service	Cost per meal equivalent	\$2.60	\$2.81	\$2.79
Transportation	Cost per mile	\$1.96	\$2.54	\$3.66
	Cost per rider	\$635	\$854	\$1,071

Very low   Low   Comparable   High   Very high

### Per pupil spending

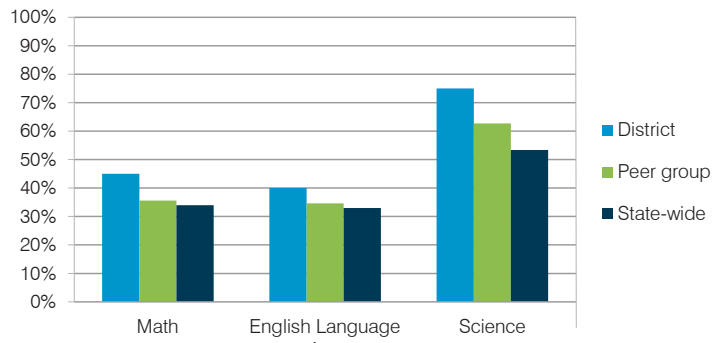
Spending by area	District		Peer average	State average
	2014	2015	2015	2015
Instruction	\$ 4,319	\$ 4,504	\$ 4,035	\$ 4,105
Administration	1,058	1,058	1,036	780
Plant operations	911	854	919	930
Food service	441	363	586	417
Transportation	983	871	505	371
Student support	372	393	482	613
Instruction support	477	479	501	442
<b>Total operational</b>	<b>\$ 8,561</b>	<b>\$ 8,522</b>	<b>\$ 8,064</b>	<b>\$ 7,658</b>
Land and buildings	\$ 4	\$ 10	\$ 300	\$ 641
Equipment	284	411	423	383
Interest	6	220	86	225
Other	38	39	113	150
<b>Total nonoperational</b>	<b>\$ 332</b>	<b>\$ 680</b>	<b>\$ 922</b>	<b>\$ 1,399</b>
<b>Total per pupil spending</b>	<b>\$ 8,893</b>	<b>\$ 9,202</b>	<b>\$ 8,986</b>	<b>\$ 9,057</b>

## STUDENT AND TEACHER MEASURES, FINANCIAL ASSESSMENT, AND REVENUE

### Student and teacher measures

Measure	District	Peer average	State average
Attendance rate	94%	94%	94%
Graduation rate (2014)	N/A	N/A	N/A
Poverty rate (2014)	26%	25%	23%
Students per teacher	16.8	12.5	18.6
Average teacher salary	\$37,129	\$46,197	\$46,008
Average years of teacher experience	11.7	11.8	11.0
Percentage of teachers in first 3 years	13%	20%	20%

### Students who met state standards



### Financial stress assessment

Overall financial stress level: **Low**

Measure: 2013 through 2015	Assessment
Change in number of district students	Steady
Spending exceeded operating/capital budgets	No overspending
Spending increase election results	No election held
Operating reserve percentage (max. 4%), trend	3.2%, Increasing
Years of capital reserve held	More than 3 years
Current financial and internal control status	Marginally compliant

Low   Moderate   High

### Per pupil revenues

Revenues by source	District		Peer average	State average
	2014	2015	2015	2015
Federal	\$ 984	\$ 1,318	\$ 1,856	\$ 1,299
State	5,224	5,083	4,465	3,517
Local	2,478	3,622	2,510	4,248
<b>Total revenues per pupil</b>	<b>\$ 8,686</b>	<b>\$ 10,023</b>	<b>\$ 8,831</b>	<b>\$ 9,064</b>
<b>Select revenues from common sources</b>				
Equalization formula funding	\$ 6,594	\$ 6,075	\$ 5,536	\$ 5,303
Grants	945	1,297	2,013	1,167
Donations and tax credits	39	47	65	78
<b>Select revenues from less common sources</b>				
Desegregation	\$ 0	\$ 0	0 of 10	
Small school adjustment	0	0	0 of 10	
Federal impact aid	42	37	3 of 10	
Voter-approved levy increases	0	0	8 of 10	

# Palominas ESD—page 2

## Classroom dollar percentage

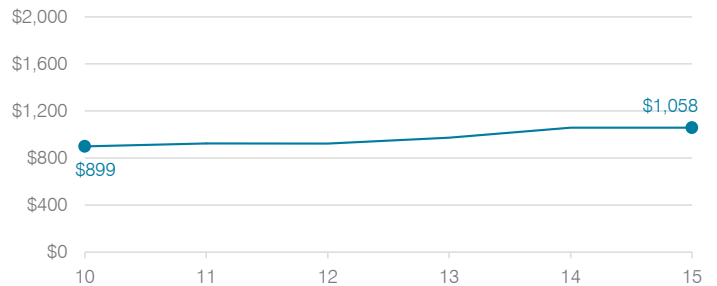
Year:	2001	2002	2003	2004	2005	2006	2007	2008	2009	2010	2011	2012	2013	2014	2015
Percentage:	55.4	54.9	54.2	55.7	54.3	55.6	55.5	55.9	54.1	53.8	51.5	50.3	51.1	50.5	52.9

### OPERATIONAL TRENDS Fiscal years as indicated

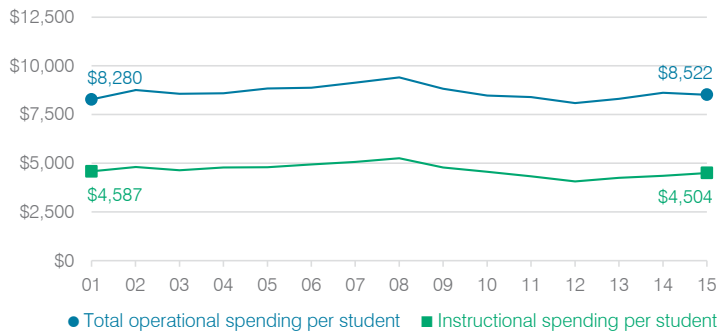
#### 5-year spending trend (2010 through 2015)

Total operational spending per pupil, adjusted for inflation, increased by 1 percent. The percentage of dollars spent in the classroom varied year to year, decreasing overall from 53.8 to 52.9 percent. As a percentage of total operational spending, administration, transportation, and instruction support increased slightly, while plant operations decreased. Other nonclassroom areas varied year to year.

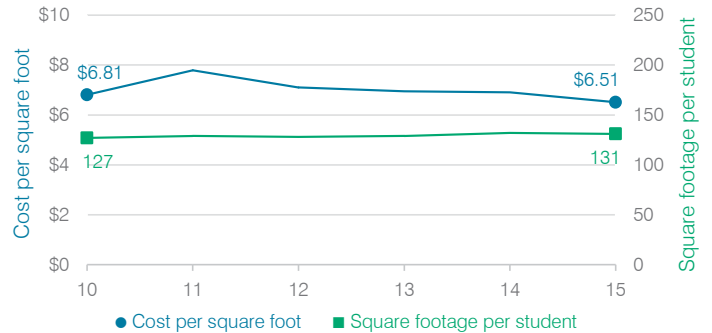
#### Administrative cost per student



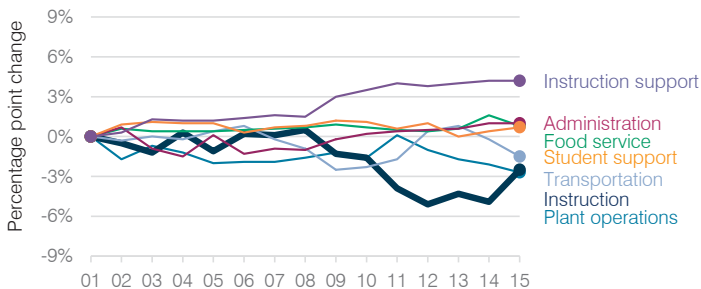
#### Total operational and instructional spending per student (inflation adjusted to 2015 dollars)



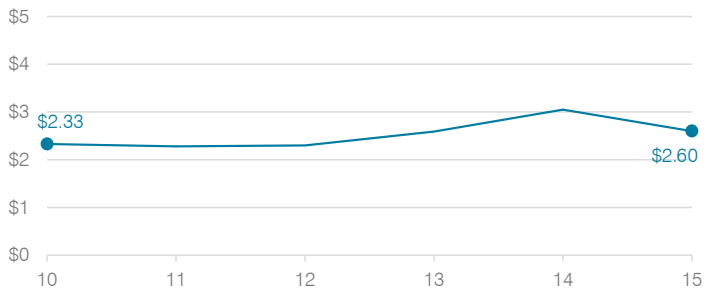
#### Plant cost per square foot and square footage per student



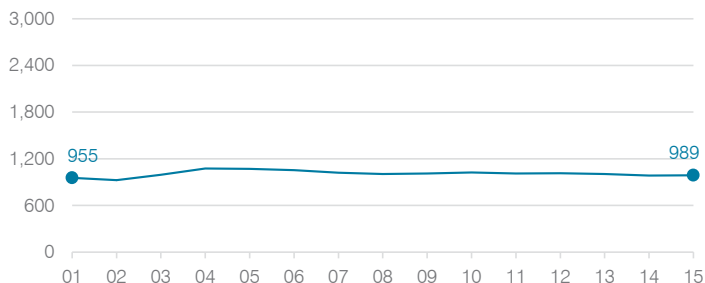
#### Changes in operational spending percentages



#### Food service cost per meal



#### Students attending



#### Transportation costs per mile and per rider

