

Page Unified School District

Coconino County

Efficiency peer groups 4 and T-10, Achievement peer group 5

Legislative district(s): 7

District size, location:

Medium-large, Town

Students attending¹:

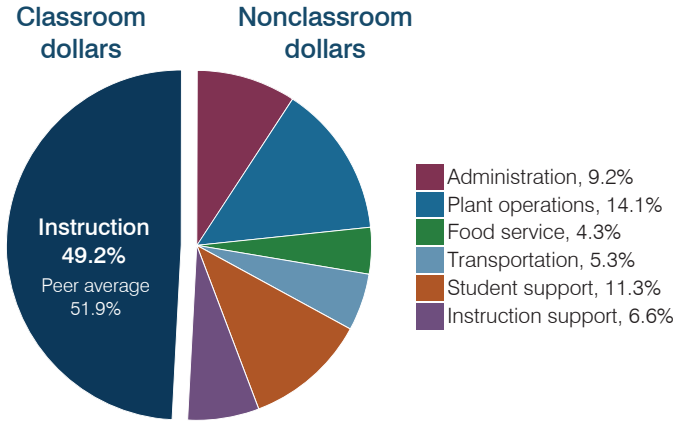
2,594

Number of schools:

4

OPERATIONAL EFFICIENCY

Spending by operational area



Efficiency measures relative to peer averages

Operational area	Measure	District	Peer average	State average
Administration	Cost per pupil	\$902	\$791	\$806
	Students per administrative position	53	69	67
Plant operations	Cost per square foot	\$5.62	\$5.35	\$6.10
	Square footage per student	246	191	154
Food service	Cost per meal	\$3.16	\$2.94	\$2.81
Transportation	Cost per mile	\$2.57	\$1.89	\$3.72
	Cost per rider	\$1,931	\$1,242	\$1,092

Very low Low Comparable High Very high

Per pupil spending

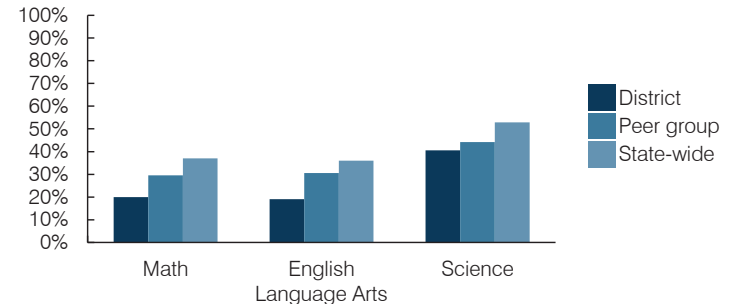
Spending by area	District		Peer average 2016	State average 2016
	2015	2016		
Instruction	\$ 4,697	\$ 4,836	\$ 3,915	\$ 4,145
Administration	829	902	791	806
Plant operations	1,375	1,382	987	939
Food service	420	427	402	415
Transportation	534	517	405	364
Student support	1,088	1,114	588	633
Instruction support	709	654	473	444
Total operational	\$ 9,652	\$ 9,832	\$ 7,561	\$ 7,746
Land and buildings	\$ 518	\$ 202	\$ 232	\$ 621
Equipment	435	400	291	400
Interest	114	63	195	216
Other	177	178	69	153
Total nonoperational	\$ 1,244	\$ 843	\$ 787	\$ 1,390
Total per pupil spending	\$ 10,896	\$ 10,675	\$ 8,348	\$ 9,136

STUDENT AND TEACHER MEASURES, FINANCIAL ASSESSMENT, AND REVENUES

Student and teacher measures

Measure	District	Peer average	State average
Attendance rate (2015)	92%	93%	94%
Graduation rate (2015)	80%	83%	78%
Poverty rate (2015)	22%	24%	23%
Students per teacher	17.4	16.5	18.6
Average teacher salary	\$47,644	\$44,919	\$46,384
Amount from Proposition 301	\$5,339	\$5,307	\$5,315
Average years of teacher experience	9.2	12.0	11.0
Percentage of teachers in first 3 years	30%	17%	20%

Students who passed state assessments



Financial stress assessment

Overall financial stress level: **Low**

Measure: 2014 through 2016

Measure	Assessment
Change in number of district students	Steady
Spending exceeded operating/capital budgets	No overspending
Spending increase election results	No election held
Operating reserve percentage, Trend	Impact Aid Fund reserve
Years of capital reserve held	Impact Aid Fund reserve
Current financial and internal control status	Compliant

Low Moderate High

Per pupil revenues

Revenues by source	District		Peer average 2016	State average 2016
	2015	2016		
Federal	\$ 4,680	\$ 4,763	\$ 2,396	\$ 1,301
State	2,817	3,014	3,985	3,780
Local	4,437	3,746	3,109	4,268
Total revenues per pupil	\$ 11,934	\$ 11,523	\$ 9,490	\$ 9,349

Select revenues from common sources

Source	District 2015	District 2016	Peer average 2016	State average 2016
Equalization formula funding	\$ 5,330	\$ 5,517	\$ 5,347	\$ 5,471
Grants	1,952	2,109	1,480	1,182
Donations and tax credits	26	29	53	86

Select revenues from less common sources

Source	District 2015	District 2016	Number of peers receiving
Desegregation	\$ 0	\$ 0	1 of 18
Small school adjustment	0	0	0 of 18
Federal impact aid	3,051	2,845	7 of 18
Voter-approved levy increases	111	59	15 of 18

¹ District is working with the Arizona Department of Education to resolve student count discrepancy. See Appendix B, page b-5.

Classroom dollar percentage

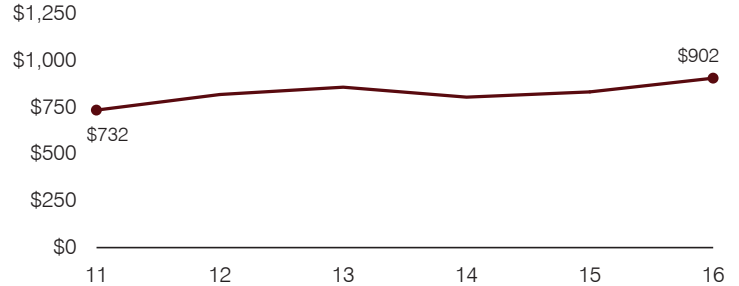
Year:	2001	2002	2003	2004	2005	2006	2007	2008	2009	2010	2011	2012	2013	2014	2015	2016
Percentage:	56.5	54.8	54.8	53.0	51.3	54.8	53.1	52.5	52.3	51.3	49.1	49.4	49.6	49.1	48.7	49.2

OPERATIONAL TRENDS
Fiscal years as indicated

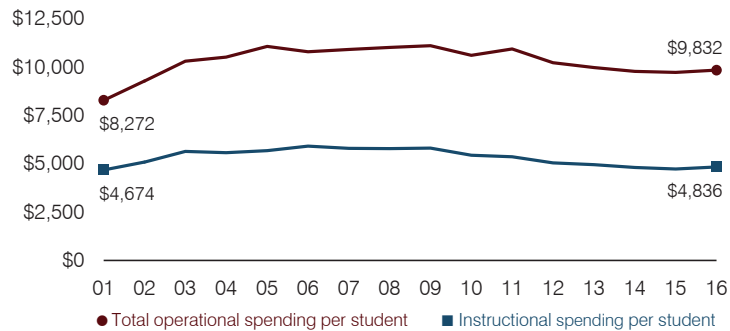
5-year spending trend (2011 through 2016)

Total operational spending per pupil, adjusted for inflation, decreased by 10 percent. The percentage of dollars spent in the classroom increased slightly overall from 49.1 to 49.2 percent. Overall, as a percentage of total operational spending, student support decreased substantially, while administration increased substantially, plant operations increased, and transportation increased slightly.

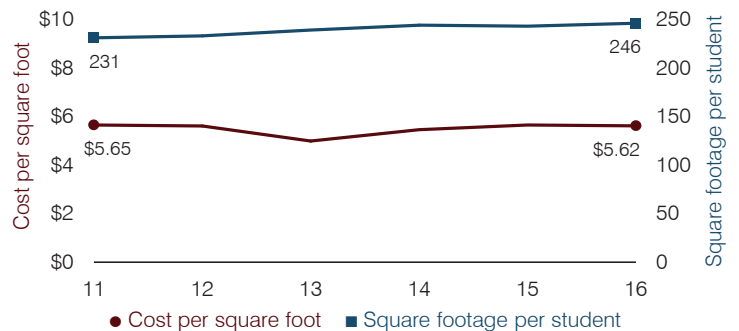
Administrative cost per pupil



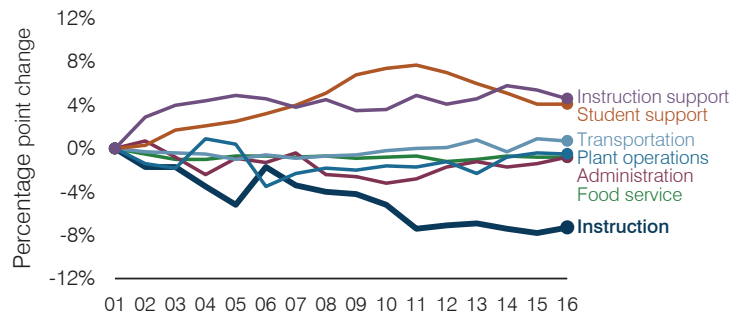
Total operational and instructional spending per pupil (inflation adjusted to 2016 dollars)



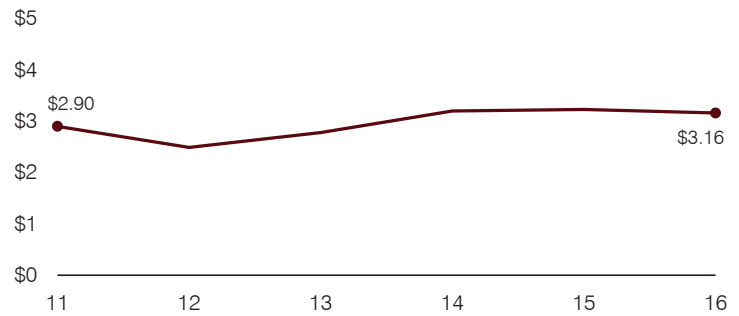
Plant cost per square foot and square footage per student



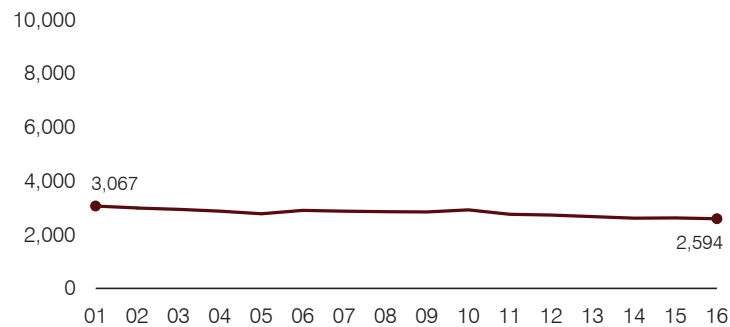
Changes in operational spending percentages



Food service cost per meal



Students attending



Transportation costs per mile and per rider

