

# Mohave Valley Elementary School District

Mohave County

Efficiency peer groups 9 and T-7, Achievement peer group 17<sup>1</sup>

Legislative district(s): 5

District size, location:

Medium, Town

Students attending:

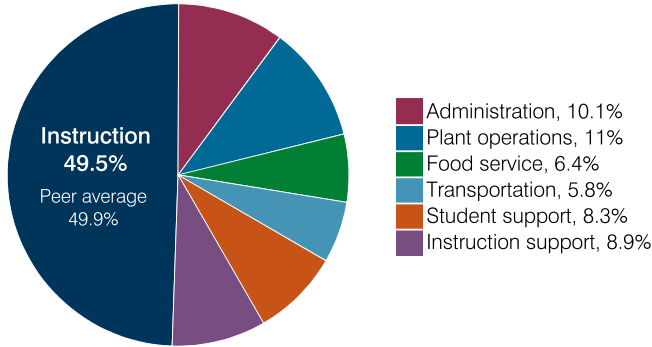
1,047

Number of schools:

3

## OPERATIONAL EFFICIENCY

### Spending by operational area



### Efficiency measures relative to peer averages

Operational area	Measure	District	Peer average	State average
Administration	Cost per pupil	\$991	\$1,098	\$860
	Students per administrative position	81	59	66
Plant operations	Cost per square foot	\$5.10	\$6.52	\$6.34
	Square footage per student	210	161	156
Food service	Cost per meal	\$3.25	\$3.10	\$3.02
Transportation	Cost per mile	\$2.44	\$3.35	\$4.05
	Cost per rider	\$858	\$1,057	\$1,301

Very low    Low    Comparable    High    Very high

### Per pupil spending

Spending by area	District		Peer average 2018	State average 2018
	2017	2018		
Instruction	\$ 4,115	\$ 4,843	\$ 4,233	\$ 4,480
Administration	863	991	1,098	860
Plant operations	1,204	1,072	1,034	988
Food service	542	623	591	425
Transportation	561	565	526	388
Student support	636	811	584	693
Instruction support	737	873	462	462
<b>Total operational</b>	<b>8,658</b>	<b>9,778</b>	<b>8,528</b>	<b>8,296</b>
Land and buildings	411	26	416	827
Equipment	408	366	316	409
Interest	7	0	75	228
Other	113	91	170	169
<b>Total nonoperational</b>	<b>939</b>	<b>483</b>	<b>977</b>	<b>1,633</b>
<b>Total per pupil spending</b>	<b>\$ 9,597</b>	<b>\$ 10,261</b>	<b>\$ 9,505</b>	<b>\$ 9,929</b>

<sup>1</sup> See Appendix A for information such as districts included in each peer group and Appendix B for sources and methodology.

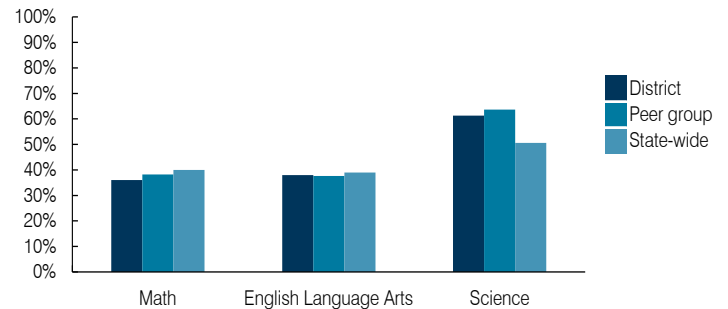
## STUDENT ACHIEVEMENT, STUDENT AND TEACHER MEASURES, AND REVENUES

### ADE-assigned school letter grades

Grade	Number of schools <sup>2</sup>	Percentage of schools
A	0	0%
B	2	100%
C	0	0%
D	0	0%
F	0	0%

<sup>2</sup> Excludes schools for which letter grades were not published by ADE. See Appendix B for more information.

### Students who passed State assessments



### Student and teacher measures

Measure	District	Peer average	State average
Attendance rate	93%	94%	94%
Graduation rate (2017)	N/A	N/A	N/A
Poverty rate (2017)	22%	19%	19%
Special education population	13%	13%	12%
Students per teacher	20.1	14.1	18.4
Average teacher salary	\$66,432	\$50,510	\$48,951
Amount from Prop 301	\$8,121	\$5,096	\$6,411
Average years of teacher experience	8.9	13.8	11.4
Percentage of teachers in first 3 years	6%	9%	19%

### Per pupil revenues

Revenues by source	District		Peer average 2018	State average 2018
	2017	2018		
Federal	\$ 1,594	\$ 1,888	\$ 1,836	\$ 1,317
State	3,292	3,523	4,904	4,011
Local	4,499	4,020	2,715	4,592
<b>Total per pupil revenues</b>	<b>\$ 9,385</b>	<b>\$ 9,431</b>	<b>\$ 9,455</b>	<b>\$ 9,920</b>

### Select revenues from common sources

Source	District	Peer average	State average
Equalization formula funding	\$ 6,049	\$ 6,129	\$ 5,707
Grants	1,892	1,973	2,113
Donations and tax credits	16	31	67

### Select revenues from less common sources

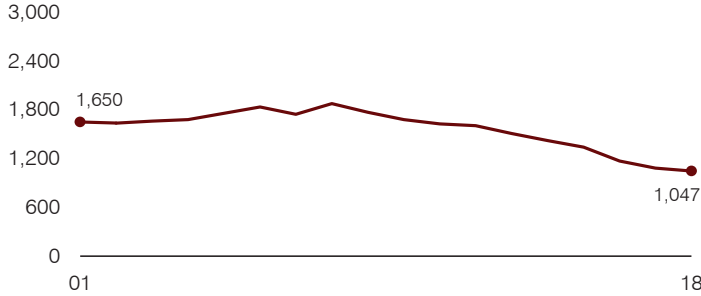
Source	District	Peer average	Number of peers receiving
Desegregation	\$ 0	\$ 0	0 of 10
Small school adjustment	0	0	0 of 10
Federal impact aid	63	137	3 of 10
Voter-approved levy increases	35	928	8 of 10

**Instructional spending percentage**

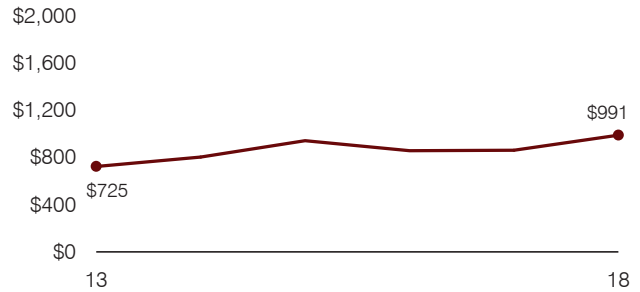
Year: 2001 2002 2003 2004 2005 2006 2007 2008 2009 2010 2011 2012 2013 2014 2015 2016 2017 2018  
 Percentage: 54.8 55.9 59.5 57.2 58.0 59.9 59.3 58.8 58.5 52.0 52.9 54.3 51.6 51.7 52.9 48.8 47.5 49.5

**TRENDS AND FINANCIAL STRESS ASSESSMENT**  
 Fiscal years as indicated

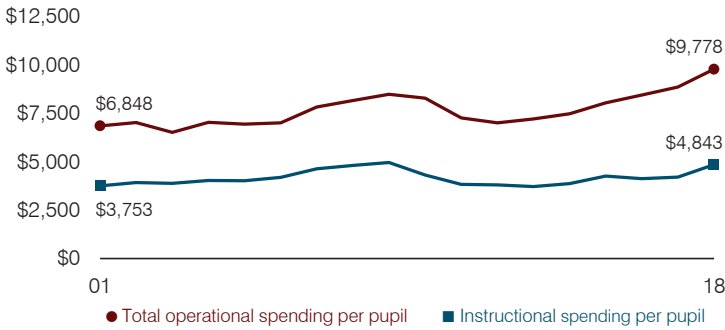
**Students attending**



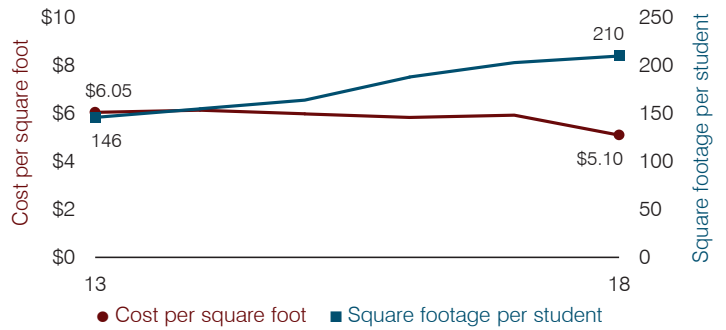
**Administrative cost per pupil**



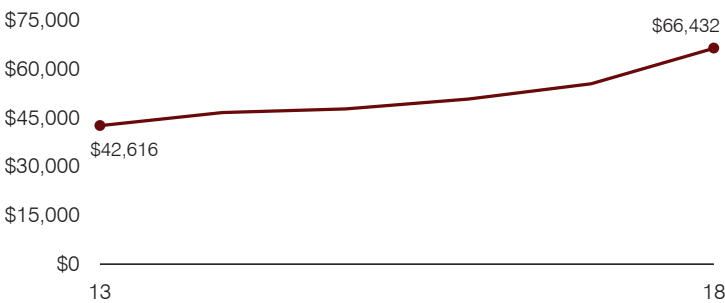
**Total operational and instructional spending per pupil (inflation adjusted to 2018 dollars)**



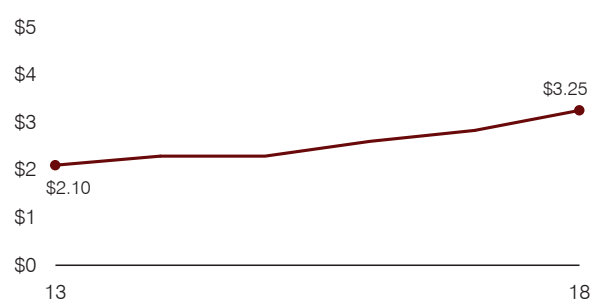
**Plant cost per square foot and square footage per student**



**Average teacher salary**



**Food service cost per meal**



**Financial stress assessment**

Overall financial stress level: **Low**

Measure: 2016 through 2018	Assessment
Change in number of district students	Large decrease
Spending exceeded operating/capital budgets	No overspending
Spending increase election results	Voter-approved
Operating reserve percentage, Trend	6.1%, Decreasing
Years of capital reserve held	More than 3 years
Current financial and internal control status	Compliant

**Low**      **Moderate**      **High**

**Transportation costs per mile and per rider**

