

# Littleton Elementary School District

Maricopa County

Efficiency peer groups 8 and T-1, Achievement peer group 13<sup>1</sup>

Legislative district(s): 19

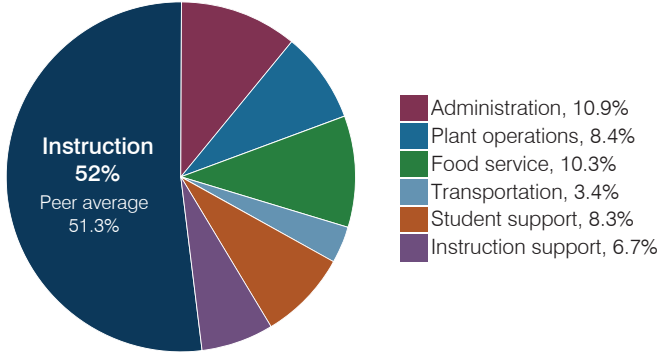
District size, location: Medium-large, Suburb

Students attending: 5,389

Number of schools: 7

## OPERATIONAL EFFICIENCY

### Spending by operational area



### Efficiency measures relative to peer averages

Operational area	Measure	District	Peer average	State average
Administration	Cost per pupil	\$834	\$974	\$844
	Students per administrative position	71	68	67
Plant operations	Cost per square foot	\$4.97	\$6.31	\$6.30
	Square footage per student	130	147	155
Food service	Cost per meal	\$2.95	\$2.75	\$2.88
Transportation	Cost per mile	\$5.05	\$6.81	\$3.84
	Cost per rider	\$800	\$942	\$1,198

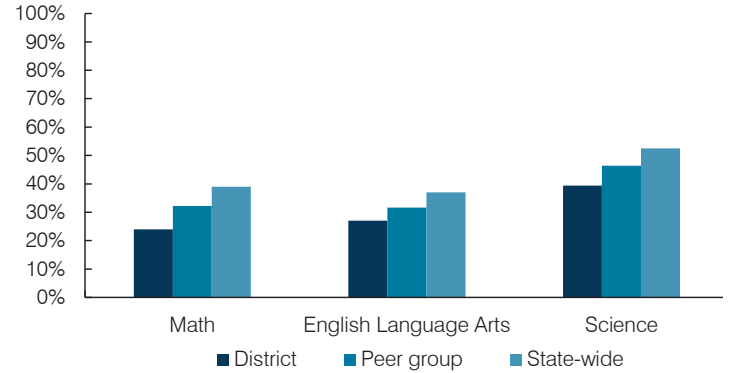
Very low   Low   Comparable   High   Very high

### Per pupil spending

Spending by area	District		Peer average 2017	State average 2017
	2016	2017		
Instruction	\$ 3,876	\$ 3,988	\$ 4,164	\$ 4,377
Administration	846	834	974	844
Plant operations	603	648	909	977
Food service	646	786	640	422
Transportation	242	262	327	381
Student support	620	635	626	679
Instruction support	549	513	559	461
<b>Total operational</b>	<b>\$ 7,382</b>	<b>\$ 7,666</b>	<b>\$ 8,199</b>	<b>\$ 8,141</b>
Land and buildings	\$ 2,158	\$ 486	\$ 924	\$ 691
Equipment	535	348	582	424
Interest	104	181	255	236
Other	21	22	146	161
<b>Total nonoperational</b>	<b>\$ 2,818</b>	<b>\$ 1,037</b>	<b>\$ 1,907</b>	<b>\$ 1,512</b>
<b>Total per pupil spending</b>	<b>\$ 10,200</b>	<b>\$ 8,703</b>	<b>\$ 10,106</b>	<b>\$ 9,653</b>

## STUDENT ACHIEVEMENT, STUDENT AND TEACHER MEASURES, AND REVENUES

### Students who passed state assessments



### Student and teacher measures

Measure	District	Peer average	State average
Attendance rate	95%	94%	94%
Graduation rate (2016)	N/A	N/A	N/A
Poverty rate (2016)	21%	25%	22%
Special education population	12%	12%	12%
Students per teacher	16.9	19.1	18.5
Average teacher salary	\$38,911	\$43,084	\$48,372
Amount from Prop 301	\$5,072	\$4,885	\$5,840
Average years of teacher experience	5.3	8.3	11.3
Percentage of teachers in first 3 years	51%	30%	19%

### Per pupil revenues

Revenues by source	District		Peer average 2017	State average 2017
	2016	2017		
Federal	\$ 1,180	\$ 1,381	\$ 1,848	\$ 1,318
State	4,292	4,343	3,857	3,831
Local	3,020	3,021	4,627	4,443
<b>Total per pupil revenues</b>	<b>\$ 8,492</b>	<b>\$ 8,745</b>	<b>\$ 10,332</b>	<b>\$ 9,592</b>

#### Select revenues from common sources

	District	Peer average	State average
Equalization formula funding	\$ 5,013	\$ 4,954	\$ 5,145
Amount from Prop 123	234	232	236
Prop 123 additional funding	44	41	43
Grants	1,192	1,446	1,915
Donations and tax credits	39	68	54

#### Select revenues from less common sources

	District	Peer average	State average
Desegregation	\$ 0	\$ 0	4 of 19
Small school adjustment	0	0	0 of 19
Federal impact aid	0	0	0 of 19
Voter-approved levy increases	1,464	1,517	19 of 19

<sup>1</sup> See Appendix A for information such as districts included in each peer group and Appendix B for sources and methodology.

# Littleton ESD—page 2

## Instructional spending percentage

Year:	2001	2002	2003	2004	2005	2006	2007	2008	2009	2010	2011	2012	2013	2014	2015	2016	2017
Percentage:	56.8	56.4	53.5	56.4	58.2	57.0	56.8	57.7	59.0	58.1	57.2	53.9	53.0	53.9	51.8	52.5	52.0

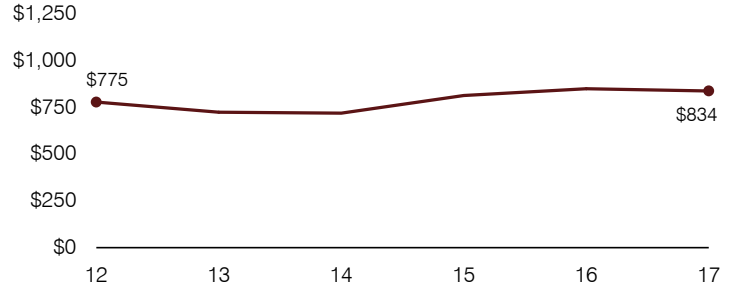
## OPERATIONAL TRENDS AND FINANCIAL STRESS ASSESSMENT

Fiscal years as indicated

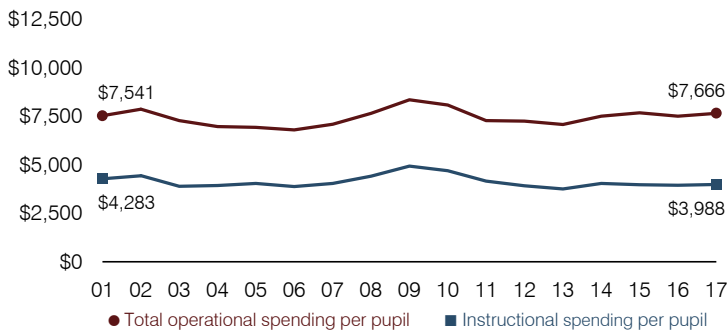
### 5-year spending trend (2012 through 2017)

Total operational spending per pupil, adjusted for inflation, increased by 6 percent. The percentage of dollars spent on instruction decreased overall from 53.9 to 52 percent. Overall, as a percentage of total operational spending, food service and instruction support increased, while administration and student support decreased slightly. Plant operations varied year to year and transportation remained stable.

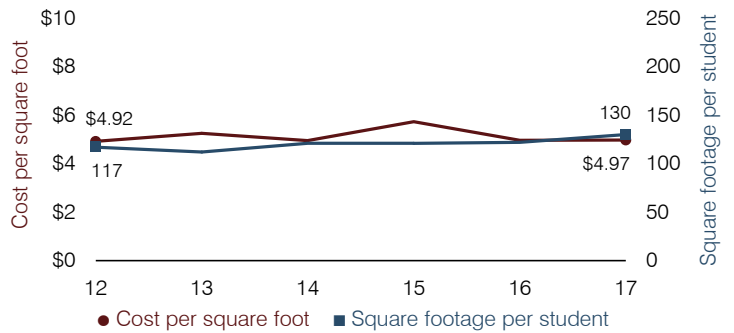
### Administrative cost per pupil



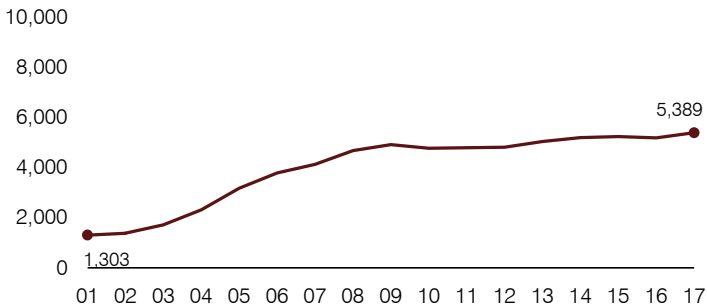
### Total operational and instructional spending per pupil (inflation adjusted to 2017 dollars)



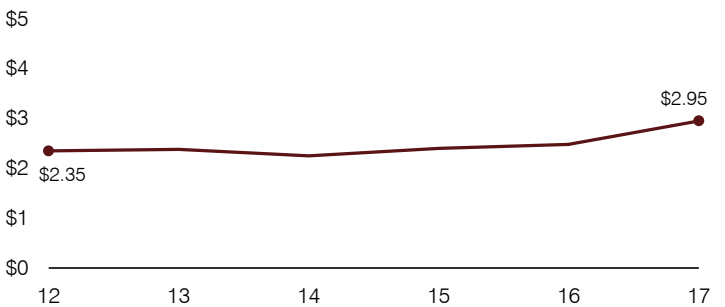
### Plant cost per square foot and square footage per student



### Students attending



### Food service cost per meal



### Financial stress assessment

Overall financial stress level:

**Low**

Measure: 2015 through 2017

Assessment

Change in number of district students	Steady
Spending exceeded operating/capital budgets	No overspending
Spending increase election results	Voter-approved
Operating reserve percentage, Trend	4.8%, Varying
Years of capital reserve held	More than 3 years
Current financial and internal control status	Compliant

Low

Moderate

High

### Transportation costs per mile and per rider

