

Laveen Elementary School District

Maricopa County

Efficiency peer groups 8 and T-1, Achievement peer group 13¹

Legislative district(s): 19 and 27

District size, location:

Medium-large, City

Students attending:

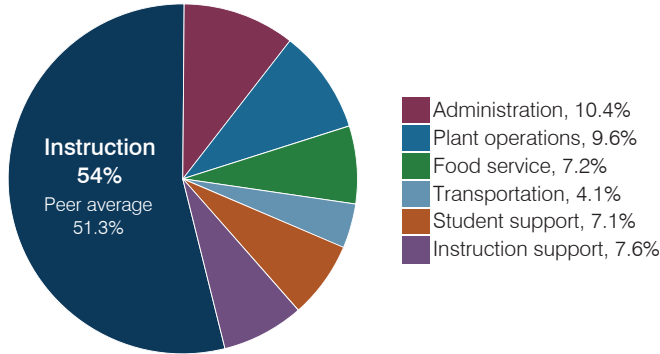
6,476

Number of schools:

8

OPERATIONAL EFFICIENCY

Spending by operational area



Efficiency measures relative to peer averages

Operational area	Measure	District	Peer average	State average
Administration	Cost per pupil	\$764	\$974	\$844
	Students per administrative position	72	68	67
Plant operations	Cost per square foot	\$6.01	\$6.31	\$6.30
	Square footage per student	118	147	155
Food service	Cost per meal	\$2.89	\$2.75	\$2.88
Transportation	Cost per mile	\$7.23	\$6.81	\$3.84
	Cost per rider	\$669	\$942	\$1,198

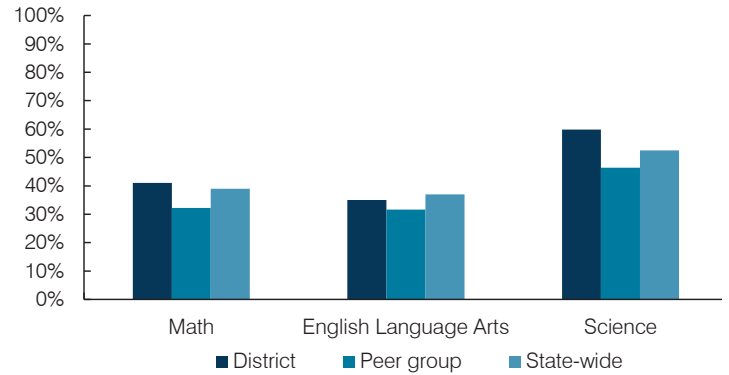
Very low Low Comparable High Very high

Per pupil spending

Spending by area	District		Peer average 2017	State average 2017
	2016	2017		
Instruction	\$ 3,401	\$ 3,968	\$ 4,164	\$ 4,377
Administration	741	764	974	844
Plant operations	679	706	909	977
Food service	503	527	640	422
Transportation	285	299	327	381
Student support	481	522	626	679
Instruction support	474	563	559	461
Total operational	\$ 6,564	\$ 7,349	\$ 8,199	\$ 8,141
Land and buildings	\$ 2,687	\$ 608	\$ 924	\$ 691
Equipment	761	471	582	424
Interest	107	111	255	236
Other	86	167	146	161
Total nonoperational	\$ 3,641	\$ 1,357	\$ 1,907	\$ 1,512
Total per pupil spending	\$ 10,205	\$ 8,706	\$ 10,106	\$ 9,653

STUDENT ACHIEVEMENT, STUDENT AND TEACHER MEASURES, AND REVENUES

Students who passed state assessments



Student and teacher measures

Measure	District	Peer average	State average
Attendance rate	94%	94%	94%
Graduation rate (2016)	N/A	N/A	N/A
Poverty rate (2016)	24%	25%	22%
Special education population	13%	12%	12%
Students per teacher	19.2	19.1	18.5
Average teacher salary	\$48,601	\$43,084	\$48,372
Amount from Prop 301	\$3,801	\$4,885	\$5,840
Average years of teacher experience	7.3	8.3	11.3
Percentage of teachers in first 3 years	21%	30%	19%

Per pupil revenues

Revenues by source	District		Peer average 2017	State average 2017
	2016	2017		
Federal	\$ 955	\$ 981	\$ 1,848	\$ 1,318
State	4,552	4,607	3,857	3,831
Local	2,785	3,121	4,627	4,443
Total per pupil revenues	\$ 8,292	\$ 8,709	\$ 10,332	\$ 9,592

Select revenues from common sources

	District 2016	District 2017	Peer average	State average
Equalization formula funding	\$ 4,971	\$ 5,020	\$ 5,145	\$ 5,503
Amount from Prop 123	231	233	236	245
Prop 123 additional funding	42	42	43	46
Grants	975	1,049	1,915	1,185
Donations and tax credits	31	25	54	89

Select revenues from less common sources

	District 2016	District 2017	Number of peers receiving
Desegregation	\$ 0	\$ 0	4 of 19
Small school adjustment	0	0	0 of 19
Federal impact aid	0	0	0 of 19
Voter-approved levy increases	1,457	1,614	19 of 19

¹ See Appendix A for information such as districts included in each peer group and Appendix B for sources and methodology.

Instructional spending percentage

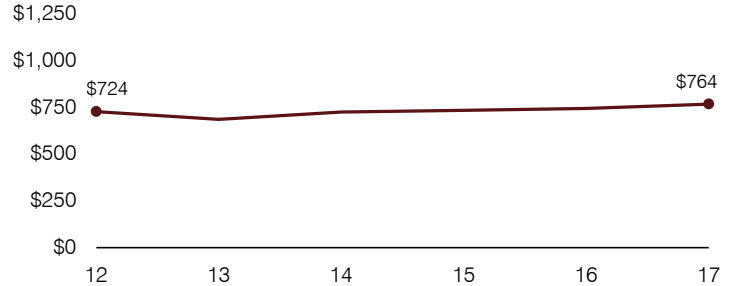
Year:	2001	2002	2003	2004	2005	2006	2007	2008	2009	2010	2011	2012	2013	2014	2015	2016	2017
Percentage:	53.8	52.1	52.9	52.3	50.7	51.0	53.6	57.0	55.2	53.3	51.7	51.4	52.2	52.7	51.6	51.8	54.0

OPERATIONAL TRENDS AND FINANCIAL STRESS ASSESSMENT
Fiscal years as indicated

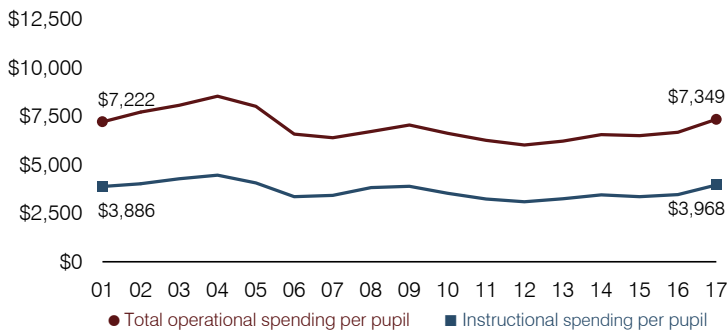
5-year spending trend (2012 through 2017)

Total operational spending per pupil, adjusted for inflation, increased by 22 percent. The percentage of dollars spent on instruction varied year to year, increasing overall from 51.4 to 54 percent. Overall, as a percentage of total operational spending, administration decreased substantially and plant operations decreased, while instruction support increased and student support increased slightly.

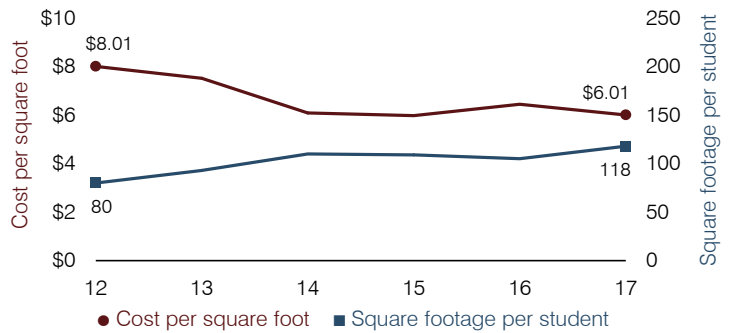
Administrative cost per pupil



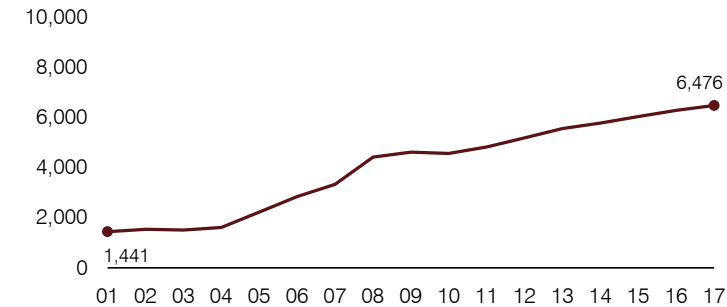
Total operational and instructional spending per pupil (inflation adjusted to 2017 dollars)



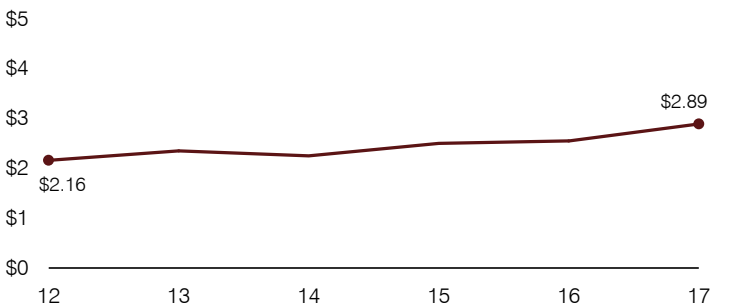
Plant cost per square foot and square footage per student



Students attending



Food service cost per meal



Financial stress assessment

Overall financial stress level: **Low**

Measure: 2015 through 2017	Assessment
Change in number of district students	Increase
Spending exceeded operating/capital budgets	No overspending
Spending increase election results	Voter-approved
Operating reserve percentage, Trend	4.4%, Increasing
Years of capital reserve held	More than 3 years
Current financial and internal control status	Compliant

Low
Moderate
High

Transportation costs per mile and per rider

