

# Joseph City Unified School District

Navajo County

Efficiency peer groups 6 and T-9, Achievement peer group 6

Legislative district(s): 6 and 7

District size, location:

Small, Rural

Students attending:

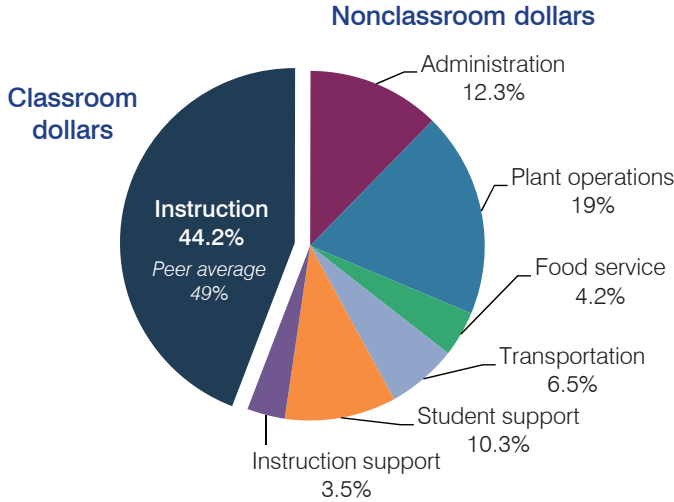
380

Number of schools:

2

## OPERATIONAL EFFICIENCY

### Spending by operational area



### Efficiency measures relative to peer averages

Operational area	Measure	District	Peer average	State average
Administration	Cost per pupil	\$1,517	\$1,639	\$780
	Students per administrative position	39	46	67
Plant operations	Cost per square foot	\$4.21	\$5.09	\$6.09
	Square footage per student	556	327	153
Food service	Cost per meal equivalent	\$5.57	\$3.59	\$2.79
Transportation	Cost per mile	\$2.14	\$2.13	\$3.66
	Cost per rider	\$805	\$958	\$1,071

Very low   Low   Comparable   High   Very high

### Per pupil spending

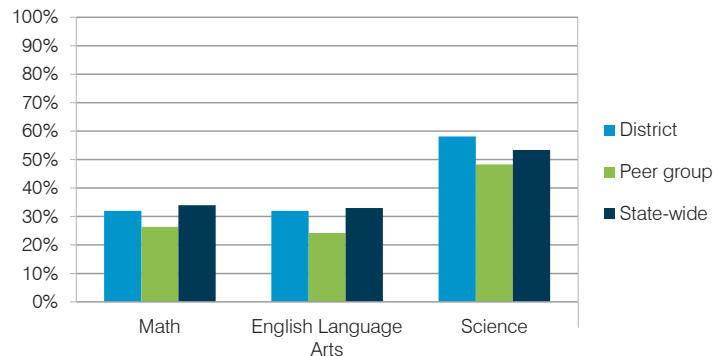
Spending by area	District		Peer average	State average
	2014	2015	2015	2015
Instruction	\$ 5,693	\$ 5,454	\$ 5,004	\$ 4,105
Administration	1,587	1,517	1,639	780
Plant operations	2,247	2,339	1,561	930
Food service	437	521	492	417
Transportation	764	801	511	371
Student support	1,187	1,274	610	613
Instruction support	486	435	392	442
<b>Total operational</b>	<b>\$ 12,401</b>	<b>\$ 12,341</b>	<b>\$ 10,209</b>	<b>\$ 7,658</b>
Land and buildings	\$ 87	\$ 1,038	\$ 251	\$ 641
Equipment	341	3,884	730	383
Interest	345	275	180	225
Other	48	62	50	150
<b>Total nonoperational</b>	<b>\$ 821</b>	<b>\$ 5,259</b>	<b>\$ 1,211</b>	<b>\$ 1,399</b>
<b>Total per pupil spending</b>	<b>\$ 13,222</b>	<b>\$ 17,600</b>	<b>\$ 11,420</b>	<b>\$ 9,057</b>

## STUDENT AND TEACHER MEASURES, FINANCIAL ASSESSMENT, AND REVENUE

### Student and teacher measures

Measure	District	Peer average	State average
Attendance rate	95%	93%	94%
Graduation rate (2014)	97%	80%	76%
Poverty rate (2014)	32%	31%	23%
Students per teacher	13.8	15.8	18.6
Average teacher salary	\$41,613	\$42,614	\$46,008
Average years of teacher experience	14.7	12.4	11.0
Percentage of teachers in first 3 years	17%	20%	20%

### Students who met state standards



### Financial stress assessment

Overall financial stress level: **Moderate**

Measure: 2013 through 2015

Assessment

Change in number of district students	Moderate decrease
Spending exceeded operating/capital budgets	No overspending
Spending increase election results	Voter-approved
Operating reserve percentage (max. 4%), trend	2.9%, Decreasing
Years of capital reserve held	1 to 3 years
Current financial and internal control status	Compliant

Low   Moderate   High

### Per pupil revenues

Revenues by source	District		Peer average	State average
	2014	2015	2015	2015
Federal	\$ 1,050	\$ 1,131	\$ 1,992	\$ 1,299
State	651	1,458	3,085	3,517
Local	12,983	12,808	6,884	4,248
<b>Total revenues per pupil</b>	<b>\$14,684</b>	<b>\$15,397</b>	<b>\$11,961</b>	<b>\$ 9,064</b>
<b>Select revenues from common sources</b>				
Equalization formula funding	\$ 7,927	\$ 6,853	\$ 6,548	\$ 5,303
Grants	1,082	2,040	1,861	1,167
Donations and tax credits	22	39	211	78
<b>Select revenues from less common sources</b>				
<b>Number of peers receiving</b>				
Desegregation	\$ 0	\$ 0	0 of 20	
Small school adjustment	0	0	5 of 20	
Federal impact aid	19	7	5 of 20	
Voter-approved levy increases	2,704	2,672	15 of 20	

# Joseph City USD—page 2

## Classroom dollar percentage

Year:	2001	2002	2003	2004	2005	2006	2007	2008	2009	2010	2011	2012	2013	2014	2015
Percentage:	48.8	54.6	60.2	55.5	55.0	54.0	50.9	49.4	48.3	49.6	48.1	47.8	46.9	45.9	44.2

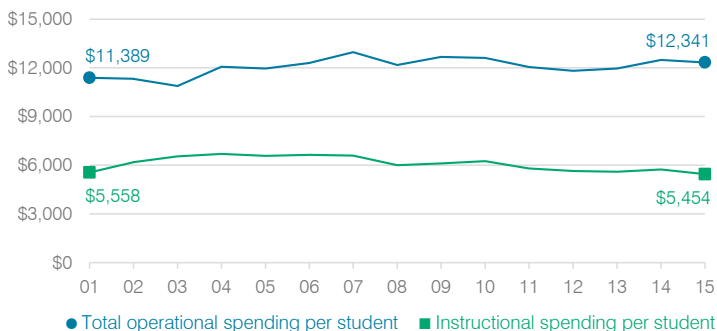
## OPERATIONAL TRENDS

Fiscal years as indicated

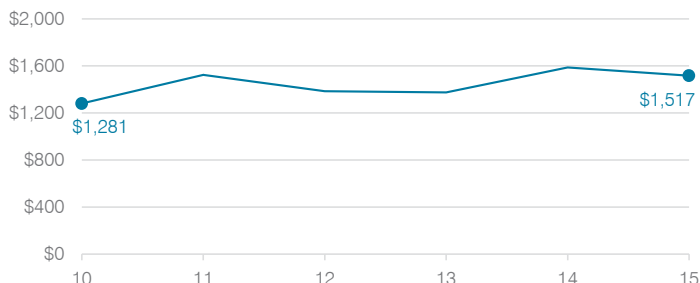
### 5-year spending trend (2010 through 2015)

Total operational spending per pupil, adjusted for inflation, decreased by 2 percent. The percentage of dollars spent in the classroom decreased from 49.6 to 44.2 percent. Overall, as a percentage of total operational spending, plant operations increased substantially, administration increased, and food service and transportation increased slightly. Student support varied year to year and instruction support remained stable.

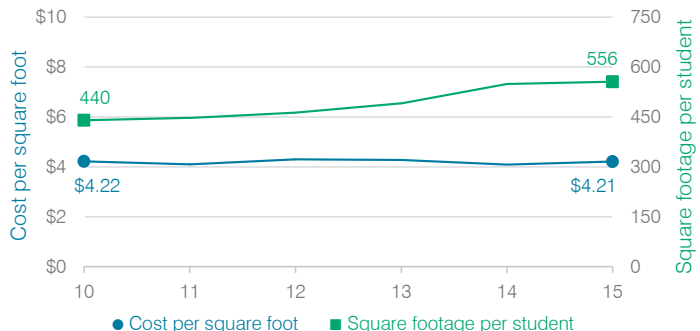
### Total operational and instructional spending per student (inflation adjusted to 2015 dollars)



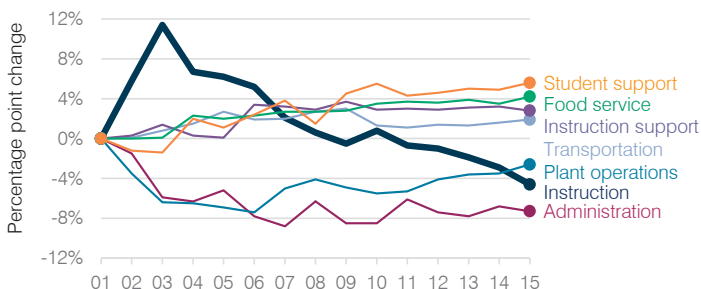
### Administrative cost per student



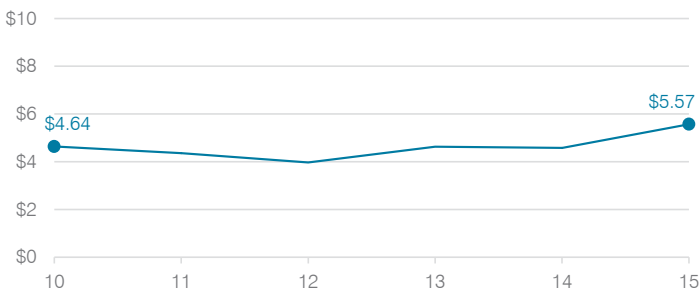
### Plant cost per square foot and square footage per student



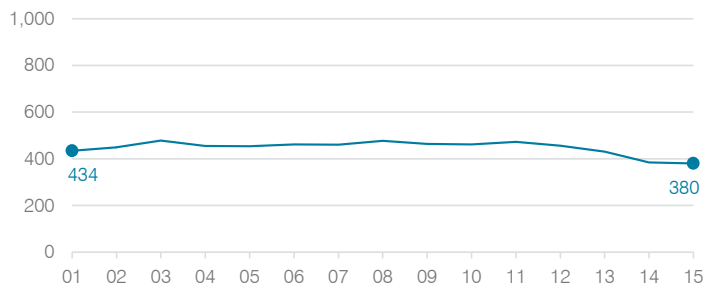
### Changes in operational spending percentages



### Food service cost per meal



### Students attending



### Transportation costs per mile and per rider

