

# J.O. Combs Unified School District

Pinal County

Efficiency peer groups 3 and T-4, Achievement peer group 2<sup>1</sup>

Legislative district(s): 8 and 16

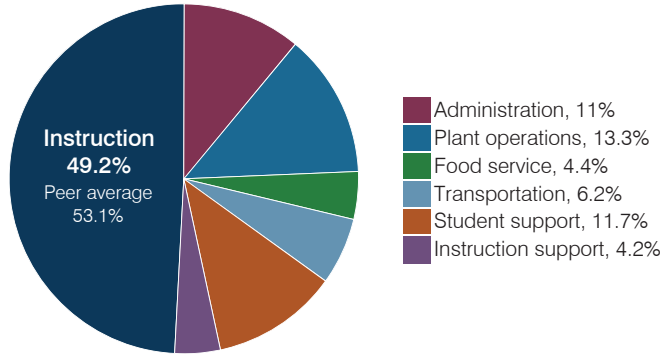
District size, location: Medium-large, Suburb

Students attending: 4,351

Number of schools: 7

## OPERATIONAL EFFICIENCY

### Spending by operational area



### Efficiency measures relative to peer averages

Operational area	Measure	District	Peer average	State average
Administration	Cost per pupil	\$749	\$837	\$844
	Students per administrative position	77	69	67
Plant operations	Cost per square foot	\$6.05	\$6.01	\$6.30
	Square footage per student	150	157	155
Food service	Cost per meal	\$2.93	\$3.04	\$2.88
Transportation	Cost per mile	\$3.23	\$3.61	\$3.84
	Cost per rider	\$998	\$1,278	\$1,198

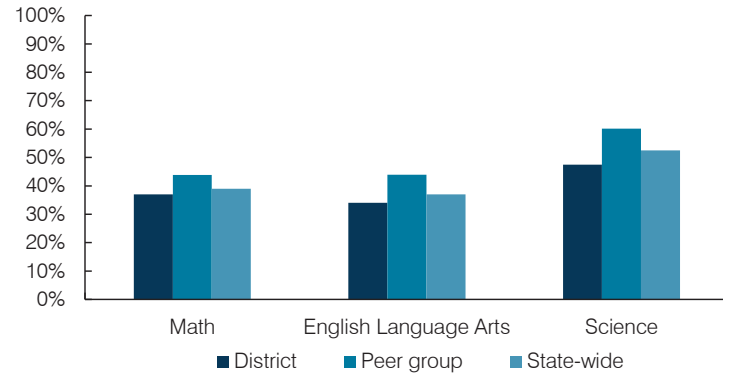
Very low   Low   Comparable   High   Very high

### Per pupil spending

Spending by area	District		Peer average 2017	State average 2017
	2016	2017		
Instruction	\$ 3,440	\$ 3,355	\$ 3,991	\$ 4,377
Administration	779	749	837	844
Plant operations	884	909	965	977
Food service	311	302	324	422
Transportation	391	419	433	381
Student support	715	798	640	679
Instruction support	249	289	338	461
<b>Total operational</b>	<b>\$ 6,769</b>	<b>\$ 6,821</b>	<b>\$ 7,528</b>	<b>\$ 8,141</b>
Land and buildings	\$ 89	\$ 50	\$ 890	\$ 691
Equipment	270	241	406	424
Interest	62	101	258	236
Other	171	185	146	161
<b>Total nonoperational</b>	<b>\$ 592</b>	<b>\$ 577</b>	<b>\$ 1,700</b>	<b>\$ 1,512</b>
<b>Total per pupil spending</b>	<b>\$ 7,361</b>	<b>\$ 7,398</b>	<b>\$ 9,228</b>	<b>\$ 9,653</b>

## STUDENT ACHIEVEMENT, STUDENT AND TEACHER MEASURES, AND REVENUES

### Students who passed state assessments



### Student and teacher measures

Measure	District	Peer average	State average
Attendance rate	94%	95%	94%
Graduation rate (2016)	88%	90%	80%
Poverty rate (2016)	13%	13%	22%
Special education population	15%	12%	12%
Students per teacher	20.9	18.4	18.5
Average teacher salary	\$38,618	\$46,837	\$48,372
Amount from Prop 301	\$6,727	\$6,016	\$5,840
Average years of teacher experience	7.6	11.3	11.3
Percentage of teachers in first 3 years	38%	18%	19%

### Per pupil revenues

Revenues by source	District		Peer average 2017	State average 2017
	2016	2017		
Federal	\$ 854	\$ 778	\$ 781	\$ 1,318
State	4,647	4,527	3,243	3,831
Local	2,183	2,135	5,097	4,443
<b>Total per pupil revenues</b>	<b>\$ 7,684</b>	<b>\$ 7,440</b>	<b>\$ 9,121</b>	<b>\$ 9,592</b>

#### Select revenues from common sources

	District	Peer average	State average
Equalization formula funding	\$ 5,606	\$ 5,505	\$ 5,442
Amount from Prop 123	251	246	240
Prop 123 additional funding	48	44	47
Grants	869	804	866
Donations and tax credits	79	118	157

#### Select revenues from less common sources

	District	Peer average	Number of peers receiving
Desegregation	\$ 0	\$ 0	1 of 15
Small school adjustment	0	0	0 of 15
Federal impact aid	0	0	3 of 15
Voter-approved levy increases	335	304	13 of 15

<sup>1</sup> See Appendix A for information such as districts included in each peer group and Appendix B for sources and methodology.

**Instructional spending percentage**

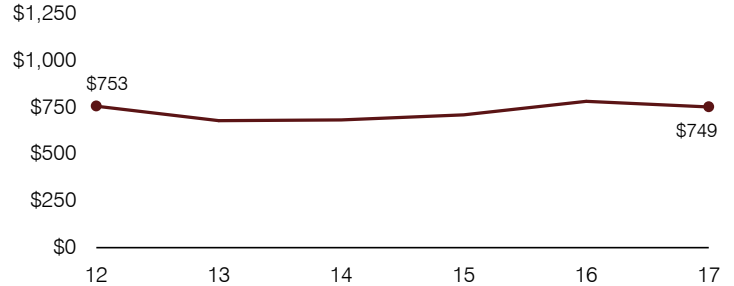
Year:	2001	2002	2003	2004	2005	2006	2007	2008	2009	2010	2011	2012	2013	2014	2015	2016	2017
Percentage:	50.5	50.4	51.6	52.3	56.2	59.8	59.1	53.1	55.3	50.7	51.2	50.9	53.2	53.3	50.5	50.8	49.2

**OPERATIONAL TRENDS AND FINANCIAL STRESS ASSESSMENT**  
Fiscal years as indicated

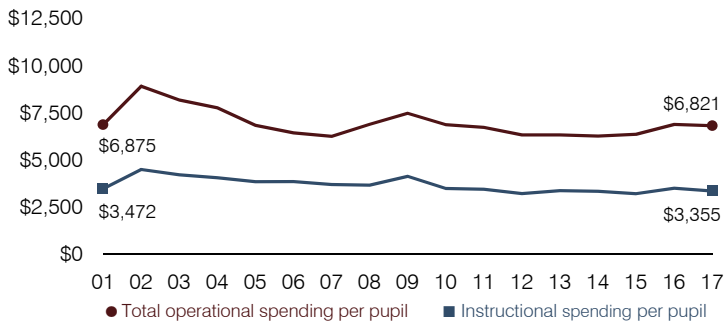
**5-year spending trend (2012 through 2017)**

Total operational spending per pupil, adjusted for inflation, increased by 8 percent. The percentage of dollars spent on instruction varied year to year, decreasing overall from 50.9 to 49.2 percent. Overall, as a percentage of total operational spending, student support and instruction support increased substantially, while administration and plant operations decreased. Other noninstructional areas remained stable.

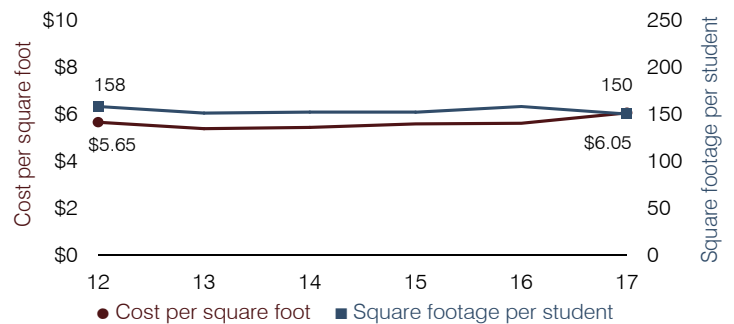
**Administrative cost per pupil**



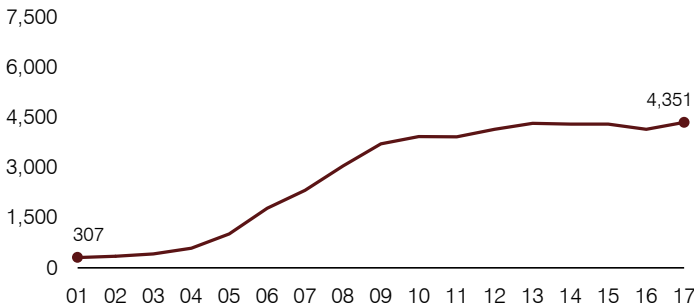
**Total operational and instructional spending per pupil (inflation adjusted to 2017 dollars)**



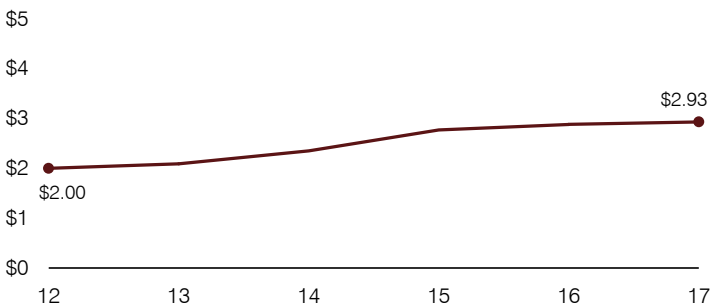
**Plant cost per square foot and square footage per student**



**Students attending**



**Food service cost per meal**



**Financial stress assessment**

Overall financial stress level:

**Low**

Measure: 2015 through 2017

Assessment

Change in number of district students	Steady
Spending exceeded operating/capital budgets	No overspending
Spending increase election results	Voter-approved
Operating reserve percentage, Trend	5.5%, Varying
Years of capital reserve held	More than 3 years
Current financial and internal control status	Compliant

Low

Moderate

High

**Transportation costs per mile and per rider**

