

Heber-Overgaard Unified School District

Navajo County

Efficiency peer groups 6 and T-8, Achievement peer group 5¹

Legislative district(s): 6

District size, location:

Small, Rural

Students attending:

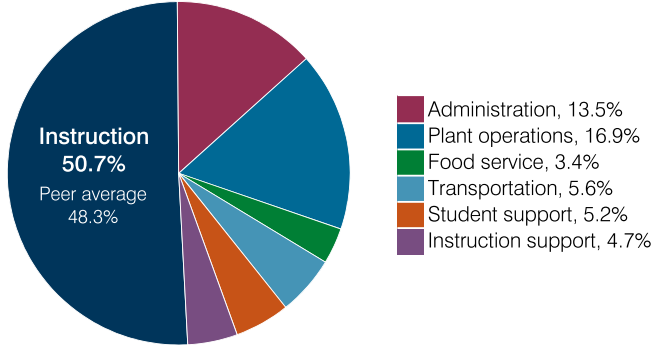
476

Number of schools:

4

OPERATIONAL EFFICIENCY

Spending by operational area



Efficiency measures relative to peer averages

Operational area	Measure	District	Peer average	State average
Administration	Cost per pupil	\$1,319	\$1,744	\$860
	Students per administrative position	50	43	66
Plant operations	Cost per square foot	\$4.92	\$5.27	\$6.34
	Square footage per student	336	321	156
Food service	Cost per meal	\$4.25	\$3.96	\$3.02
Transportation	Cost per mile	\$2.22	\$3.03	\$4.05
	Cost per rider	\$1,092	\$1,225	\$1,301

Very low Low Comparable High Very high

Per pupil spending

Spending by area	District		Peer average 2018	State average 2018
	2017	2018		
Instruction	\$ 5,070	\$ 4,967	\$ 5,556	\$ 4,480
Administration	1,445	1,319	1,744	860
Plant operations	1,534	1,653	1,706	988
Food service	347	337	546	425
Transportation	518	550	592	388
Student support	537	513	672	693
Instruction support	438	461	393	462
Total operational	9,889	9,800	11,209	8,296
Land and buildings	212	56	1,077	827
Equipment	544	601	601	409
Interest	1,061	712	162	228
Other	48	31	60	169
Total nonoperational	1,865	1,400	1,900	1,633
Total per pupil spending	\$ 11,754	\$ 11,200	\$ 13,109	\$ 9,929

¹ See Appendix A for information such as districts included in each peer group and Appendix B for sources and methodology.

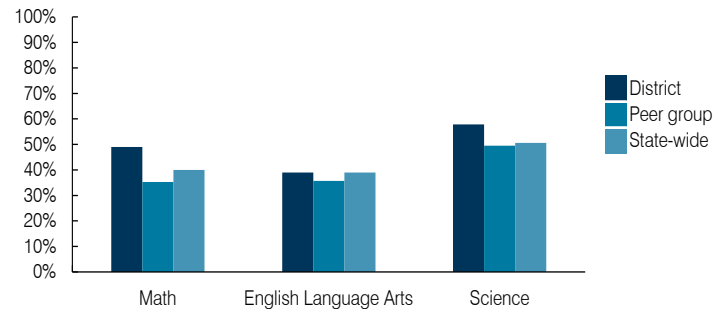
STUDENT ACHIEVEMENT, STUDENT AND TEACHER MEASURES, AND REVENUES

ADE-assigned school letter grades

Grade	Number of schools ²	Percentage of schools
A	1	33%
B	1	33%
C	0	0%
D	1	33%
F	0	0%

² Excludes schools for which letter grades were not published by ADE. See Appendix B for more information.

Students who passed State assessments



Student and teacher measures

Measure	District	Peer average	State average
Attendance rate	95%	93%	94%
Graduation rate (2017)	89%	86%	78%
Poverty rate (2017)	22%	22%	19%
Special education population	13%	13%	12%
Students per teacher	16.0	17.6	18.4
Average teacher salary	\$44,277	\$44,777	\$48,951
Amount from Prop 301	\$4,915	\$6,708	\$6,411
Average years of teacher experience	14.9	13.0	11.4
Percentage of teachers in first 3 years	13%	17%	19%

Per pupil revenues

Revenues by source	District		Peer average 2018	State average 2018
	2017	2018		
Federal	\$ 628	\$ 2,309	\$ 2,405	\$ 1,317
State	2,563	2,505	4,080	4,011
Local	8,245	8,210	8,027	4,592
Total per pupil revenues	\$ 11,436	\$ 13,024	\$ 14,512	\$ 9,920

Select revenues from common sources

Source	District	Peer average	State average
Equalization formula funding	\$ 7,140	\$ 7,166	\$ 7,175
Grants	652	2,345	2,252
Donations and tax credits	81	119	337

Select revenues from less common sources

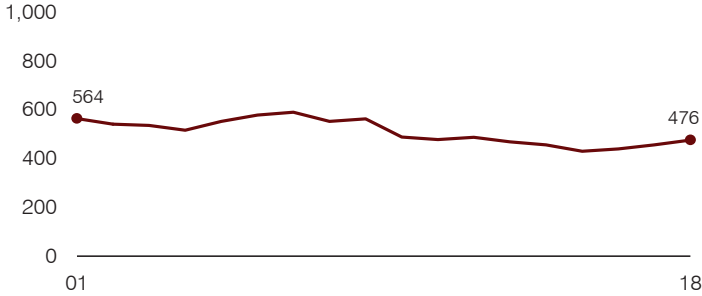
Source	District	Peer average	Number of peers receiving
Desegregation	\$ 0	\$ 0	0 of 18
Small school adjustment	0	0	5 of 18
Federal impact aid	0	0	3 of 18
Voter-approved levy increases	1,824	1,759	14 of 18

Instructional spending percentage

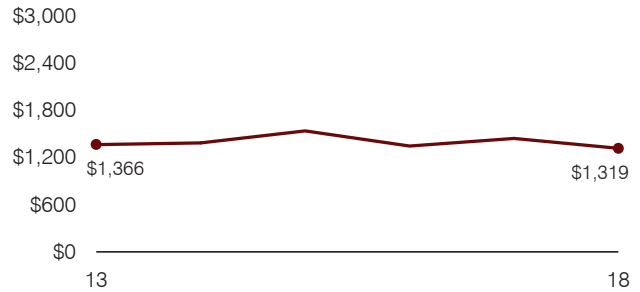
Year: 2001 2002 2003 2004 2005 2006 2007 2008 2009 2010 2011 2012 2013 2014 2015 2016 2017 2018
 Percentage: 50.2 53.3 55.1 52.3 51.7 49.8 47.7 48.0 46.1 49.6 50.8 48.4 48.4 48.4 48.1 51.3 51.3 50.7

TRENDS AND FINANCIAL STRESS ASSESSMENT
 Fiscal years as indicated

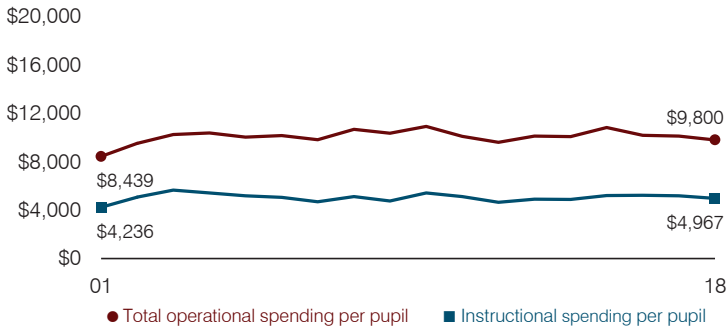
Students attending



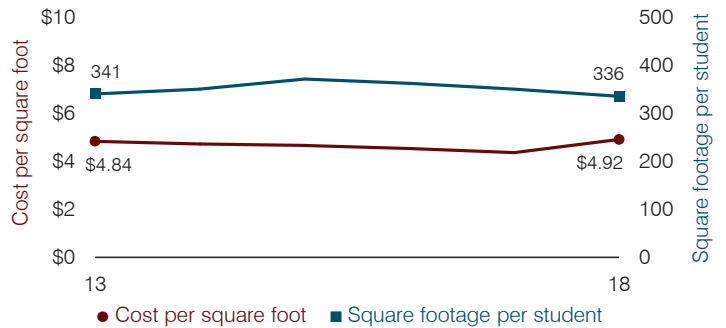
Administrative cost per pupil



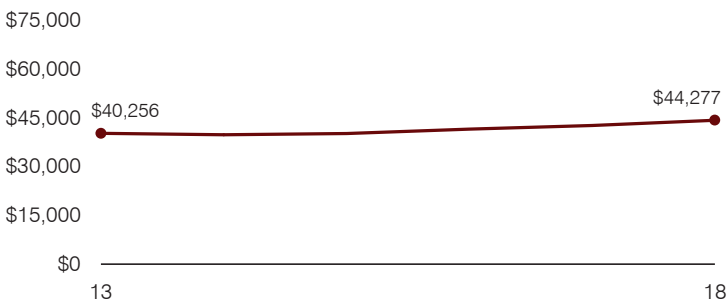
Total operational and instructional spending per pupil (inflation adjusted to 2018 dollars)



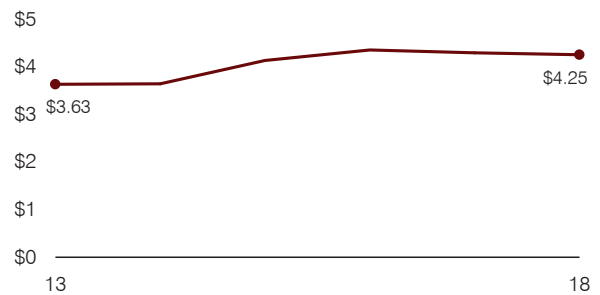
Plant cost per square foot and square footage per student



Average teacher salary



Food service cost per meal



Financial stress assessment

Overall financial stress level: **Low**

Measure: 2016 through 2018	Assessment
Change in number of district students	Increase
Spending exceeded operating/capital budgets	No overspending
Spending increase election results	No election held
Operating reserve percentage, Trend	3.7%, Varying
Years of capital reserve held	1 to 3 years
Current financial and internal control status	Compliant

Low
Moderate
High

Transportation costs per mile and per rider

