

# Glendale Elementary School District

Maricopa County

Efficiency peer groups 7 and T-1, Achievement peer group 14

Legislative district(s): 20, 29, and 30

District size, location:

Large, City

Students attending:

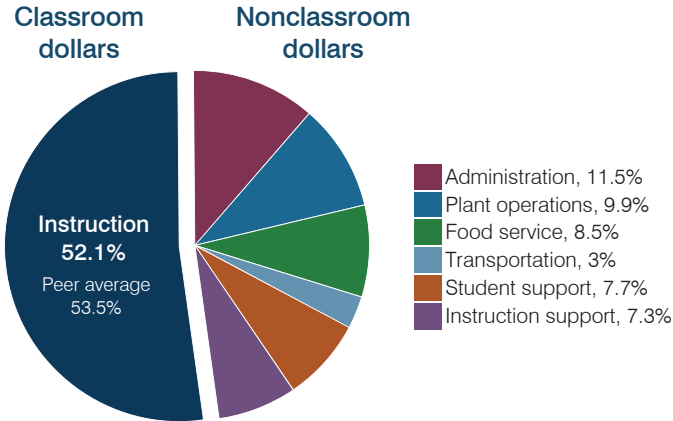
13,000

Number of schools:

17

## OPERATIONAL EFFICIENCY

### Spending by operational area



### Efficiency measures relative to peer averages

Operational area	Measure	District	Peer average	State average
Administration	Cost per pupil	\$825	\$724	\$806
	Students per administrative position	78	77	67
Plant operations	Cost per square foot	\$6.57	\$6.00	\$6.10
	Square footage per student	108	130	154
Food service	Cost per meal	\$2.70	\$2.70	\$2.81
Transportation	Cost per mile	\$5.89	\$6.21	\$3.72
	Cost per rider	\$925	\$783	\$1,092

Very low   Low   Comparable   High   Very high

### Per pupil spending

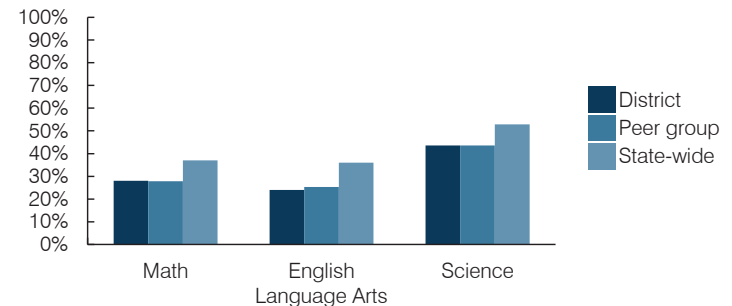
Spending by area	District		Peer average 2016	State average 2016
	2015	2016		
Instruction	\$ 3,686	\$ 3,727	\$ 3,969	\$ 4,145
Administration	684	825	724	806
Plant operations	659	710	772	939
Food service	563	604	545	415
Transportation	204	211	289	364
Student support	511	553	579	633
Instruction support	535	525	459	444
<b>Total operational</b>	<b>\$ 6,842</b>	<b>\$ 7,155</b>	<b>\$ 7,337</b>	<b>\$ 7,746</b>
Land and buildings	\$ 553	\$ 278	\$ 557	\$ 621
Equipment	255	309	417	400
Interest	84	86	167	216
Other	56	50	180	153
<b>Total nonoperational</b>	<b>\$ 948</b>	<b>\$ 723</b>	<b>\$ 1,321</b>	<b>\$ 1,390</b>
<b>Total per pupil spending</b>	<b>\$ 7,790</b>	<b>\$ 7,878</b>	<b>\$ 8,658</b>	<b>\$ 9,136</b>

## STUDENT AND TEACHER MEASURES, FINANCIAL ASSESSMENT, AND REVENUES

### Student and teacher measures

Measure	District	Peer average	State average
Attendance rate (2015)	93%	94%	94%
Graduation rate (2015)	N/A	N/A	N/A
Poverty rate (2015)	38%	35%	23%
Students per teacher	19.2	19.0	18.6
Average teacher salary	\$44,873	\$47,640	\$46,384
Amount from Proposition 301	\$4,802	\$5,327	\$5,315
Average years of teacher experience	7.8	8.6	11.0
Percentage of teachers in first 3 years	38%	33%	20%

### Students who passed state assessments



### Financial stress assessment

Overall financial stress level: **Low**

Measure: 2014 through 2016	Assessment
Change in number of district students	Steady
Spending exceeded operating/capital budgets	No overspending
Spending increase election results	No election held
Operating reserve percentage, Trend	4.0%, Increasing
Years of capital reserve held	More than 3 years
Current financial and internal control status	Compliant

Low   Moderate   High

### Per pupil revenues

Revenues by source	District		Peer average 2016	State average 2016
	2015	2016		
Federal	\$ 1,436	\$ 1,635	\$ 1,512	\$ 1,301
State	4,351	4,553	4,175	3,780
Local	1,803	1,668	3,383	4,268
<b>Total revenues per pupil</b>	<b>\$ 7,590</b>	<b>\$ 7,856</b>	<b>\$ 9,070</b>	<b>\$ 9,349</b>

### Select revenues from common sources

Source	District	Peer average	State average
Equalization formula funding	\$ 4,684	\$ 4,852	\$ 5,061
Grants	1,453	1,684	1,517
Donations and tax credits	21	15	46

### Select revenues from less common sources

Source	District	Peer average	State average
Desegregation	\$ 0	\$ 0	4 of 10
Small school adjustment	0	0	0 of 10
Federal impact aid	0	0	2 of 10
Voter-approved levy increases	867	876	10 of 10

# Glendale ESD—page 2

## Classroom dollar percentage

Year:	2001	2002	2003	2004	2005	2006	2007	2008	2009	2010	2011	2012	2013	2014	2015	2016
Percentage:	62.9	59.3	59.1	58.3	55.2	56.3	56.8	56.5	57.1	55.6	54.8	55.8	54.6	52.9	53.9	52.1

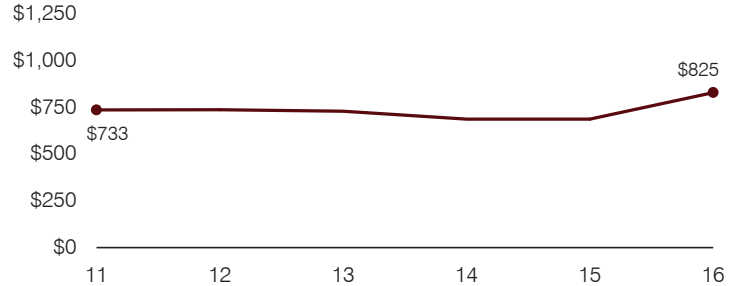
## OPERATIONAL TRENDS

Fiscal years as indicated

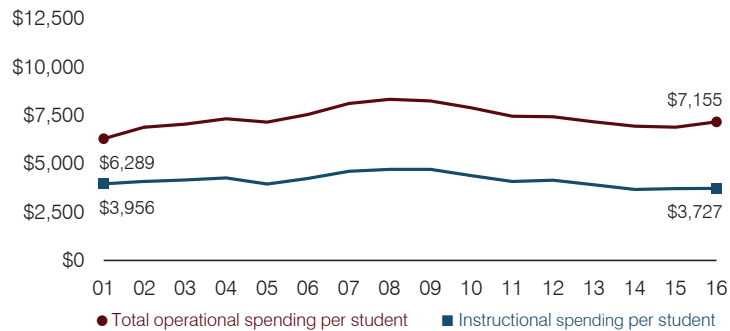
### 5-year spending trend (2011 through 2016)

Total operational spending per pupil, adjusted for inflation, decreased by 4 percent. The percentage of dollars spent in the classroom varied year to year, decreasing overall from 54.8 to 52.1 percent. As a percentage of total operational spending, student support increased substantially, food service increased, and administration increased slightly. Instruction support decreased and plant operations decreased slightly.

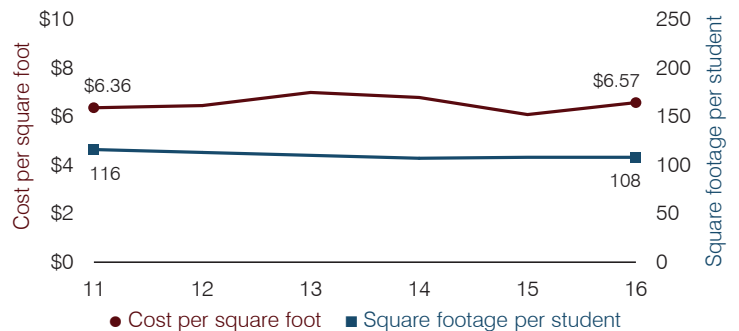
### Administrative cost per pupil



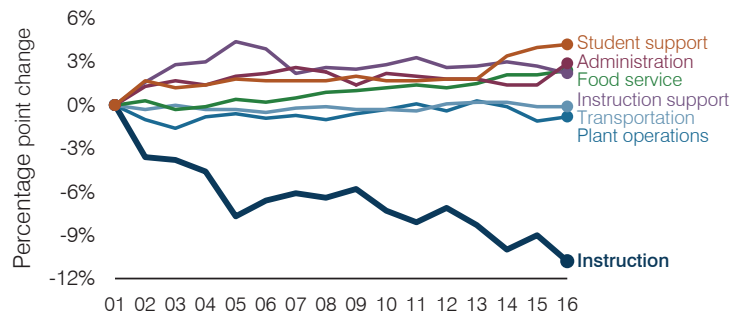
### Total operational and instructional spending per pupil (inflation adjusted to 2016 dollars)



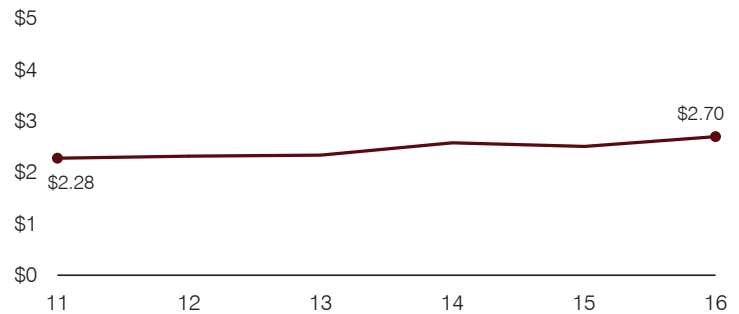
### Plant cost per square foot and square footage per student



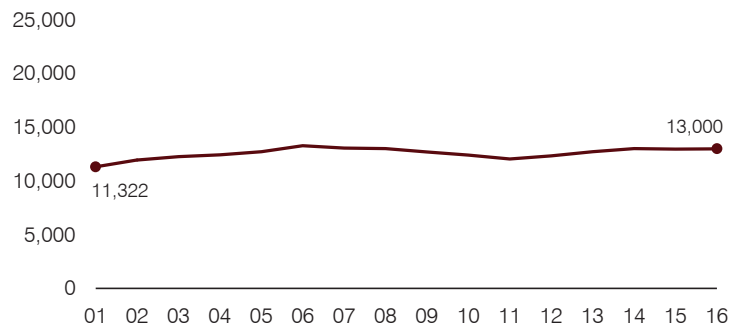
### Changes in operational spending percentages



### Food service cost per meal



### Students attending



### Transportation costs per mile and per rider

