

Gadsden Elementary School District

Yuma County

Efficiency peer groups 9 and T-6, Achievement peer group 19¹

Legislative district(s): 4

District size, location:

Medium-large, Town

Students attending:

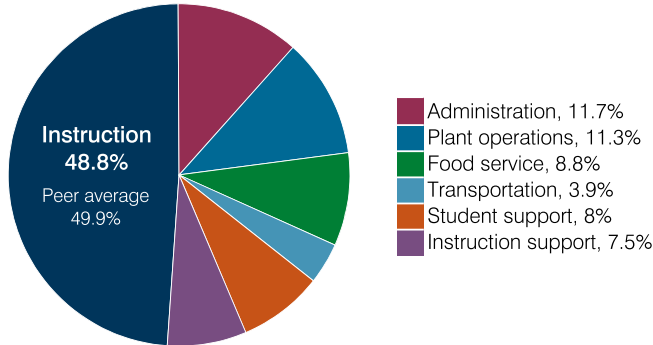
4,999

Number of schools:

8

OPERATIONAL EFFICIENCY

Spending by operational area



Efficiency measures relative to peer averages

Operational area	Measure	District	Peer average	State average
Administration	Cost per pupil	\$891	\$1,098	\$860
	Students per administrative position	61	59	66
Plant operations	Cost per square foot	\$7.99	\$6.52	\$6.34
	Square footage per student	108	161	156
Food service	Cost per meal	\$3.34	\$3.10	\$3.02
Transportation	Cost per mile	\$3.99	\$3.96	\$4.05
	Cost per rider	\$295	\$721	\$1,301

Legend: Very low (green), Low (blue), Comparable (yellow), High (orange), Very high (red)

Per pupil spending

Spending by area	District		Peer average 2018	State average 2018
	2017	2018		
Instruction	\$ 3,590	\$ 3,719	\$ 4,233	\$ 4,480
Administration	847	891	1,098	860
Plant operations	887	864	1,034	988
Food service	634	674	591	425
Transportation	279	297	526	388
Student support	548	609	584	693
Instruction support	574	569	462	462
Total operational	7,359	7,623	8,528	8,296
Land and buildings	1,445	78	416	827
Equipment	195	154	316	409
Interest	74	69	75	228
Other	9	10	170	169
Total nonoperational	1,723	311	977	1,633
Total per pupil spending	\$ 9,082	\$ 7,934	\$ 9,505	\$ 9,929

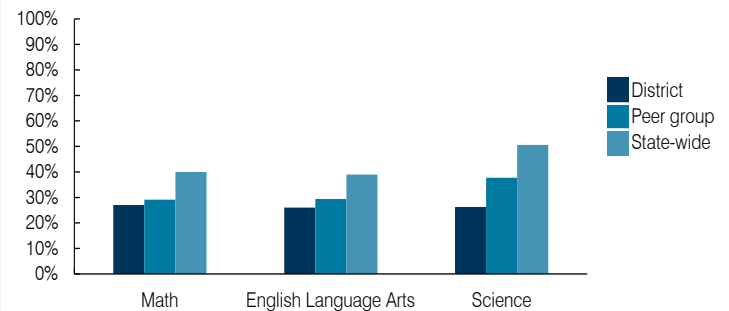
¹ See Appendix A for information such as districts included in each peer group and Appendix B for sources and methodology.

STUDENT ACHIEVEMENT, STUDENT AND TEACHER MEASURES, AND REVENUES

ADE-assigned school letter grades

Grade	Number of schools	Percentage of schools
A	1	13%
B	2	25%
C	4	50%
D	1	13%
F	0	0%

Students who passed State assessments



Student and teacher measures

Measure	District	Peer average	State average
Attendance rate	94%	93%	94%
Graduation rate (2017)	N/A	N/A	N/A
Poverty rate (2017)	33%	32%	19%
Special education population	12%	14%	12%
Students per teacher	27.2	15.6	18.4
Average teacher salary	\$43,952	\$49,189	\$48,951
Amount from Prop 301	\$5,342	\$4,810	\$6,411
Average years of teacher experience	9.0	11.6	11.4
Percentage of teachers in first 3 years	16%	11%	19%

Per pupil revenues

Revenues by source	District		Peer average 2018	State average 2018
	2017	2018		
Federal	\$ 1,893	\$ 1,785	\$ 1,836	\$ 1,317
State	5,184	5,459	4,904	4,011
Local	841	754	2,715	4,592
Total per pupil revenues	\$ 7,918	\$ 7,998	\$ 9,455	\$ 9,920

Select revenues from common sources

Source	District	Peer average	State average
Equalization formula funding	\$ 5,084	\$ 5,233	\$ 5,707
Grants	1,987	1,861	2,113
Donations and tax credits	12	16	67

Select revenues from less common sources

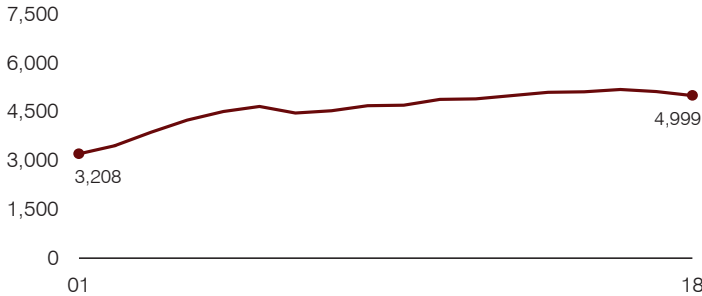
Source	District	Peer average	State average
Desegregation	\$ 0	\$ 0	0 of 10
Small school adjustment	0	0	0 of 10
Federal impact aid	0	0	3 of 10
Voter-approved levy increases	181	215	8 of 10

Instructional spending percentage

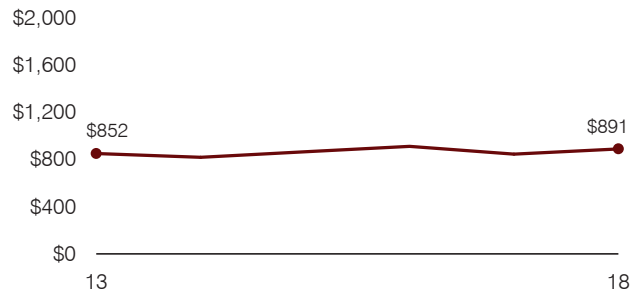
Year:	2001	2002	2003	2004	2005	2006	2007	2008	2009	2010	2011	2012	2013	2014	2015	2016	2017	2018
Percentage:	58.6	55.8	56.6	50.6	48.6	50.2	50.5	51.4	49.1	50.6	51.1	48.2	48.5	48.6	49.2	47.8	48.8	48.8

TRENDS AND FINANCIAL STRESS ASSESSMENT
Fiscal years as indicated

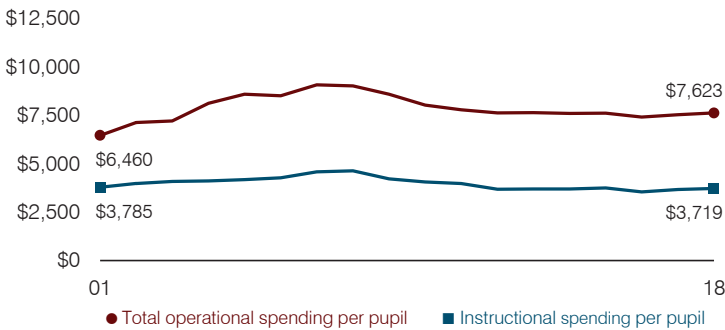
Students attending



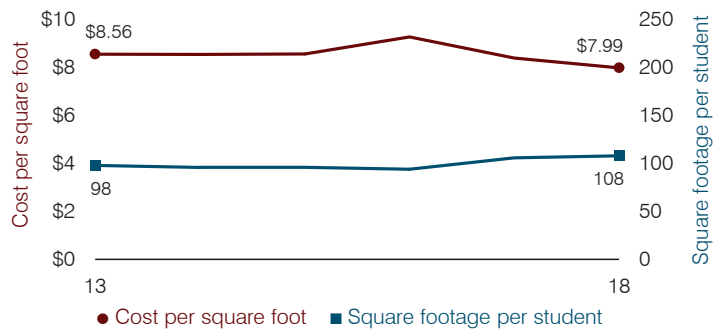
Administrative cost per pupil



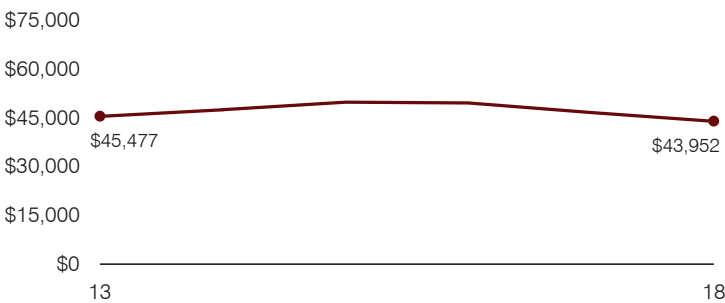
Total operational and instructional spending per pupil (inflation adjusted to 2018 dollars)



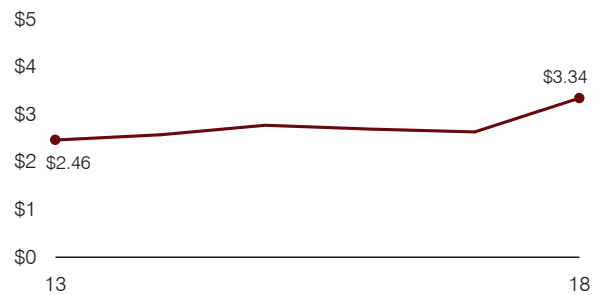
Plant cost per square foot and square footage per student



Average teacher salary



Food service cost per meal



Financial stress assessment

Overall financial stress level: **Low**

Measure: 2016 through 2018	Assessment
Change in number of district students	Moderate decrease
Spending exceeded operating/capital budgets	No overspending
Spending increase election results	No election held
Operating reserve percentage, Trend	3.5%, Decreasing
Years of capital reserve held	More than 3 years
Current financial and internal control status	Marginally compliant

Low
Moderate
High

Transportation costs per mile and per rider

