

Fowler Elementary School District

Maricopa County

Efficiency peer groups 8 and T-1, Achievement peer group 14¹

Legislative district(s): 19

District size, location:

Medium-large, City

Students attending:

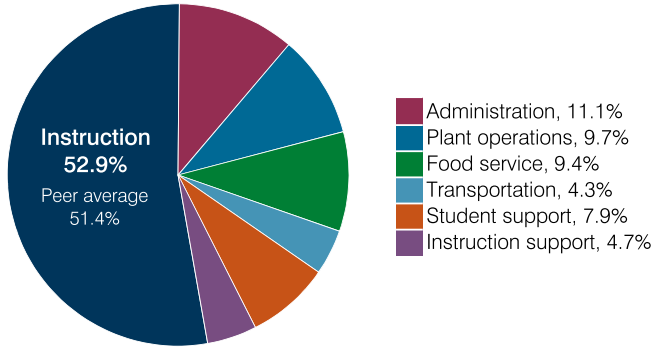
4,374

Number of schools:

7

OPERATIONAL EFFICIENCY

Spending by operational area



Efficiency measures relative to peer averages

Operational area	Measure	District	Peer average	State average
Administration	Cost per pupil	\$893	\$1,025	\$860
	Students per administrative position	72	67	66
Plant operations	Cost per square foot	\$6.12	\$6.61	\$6.34
	Square footage per student	128	143	156
Food service	Cost per meal	\$3.24	\$2.92	\$3.02
Transportation	Cost per mile	\$5.71	\$7.19	\$4.05
	Cost per rider	\$1,003	\$1,106	\$1,301

Very low
Low
Comparable
High
Very high

Per pupil spending

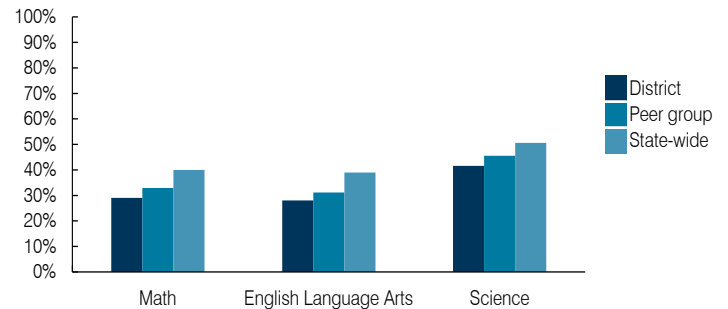
Spending by area	District		Peer average 2018	State average 2018
	2017	2018		
Instruction	\$ 4,303	\$ 4,258	\$ 4,392	\$ 4,480
Administration	873	893	1,025	860
Plant operations	732	783	971	988
Food service	695	753	659	425
Transportation	351	345	331	388
Student support	622	631	631	693
Instruction support	333	379	546	462
Total operational	7,909	8,042	8,555	8,296
Land and buildings	450	204	1,140	827
Equipment	374	539	697	409
Interest	36	52	327	228
Other	255	276	172	169
Total nonoperational	1,115	1,071	2,336	1,633
Total per pupil spending	\$ 9,024	\$ 9,113	\$10,891	\$ 9,929

STUDENT ACHIEVEMENT, STUDENT AND TEACHER MEASURES, AND REVENUES

ADE-assigned school letter grades

Grade	Number of schools	Percentage of schools
A	0	0%
B	2	29%
C	3	42%
D	2	29%
F	0	0%

Students who passed State assessments



Student and teacher measures

Measure	District	Peer average	State average
Attendance rate	94%	94%	94%
Graduation rate (2017)	N/A	N/A	N/A
Poverty rate (2017)	32%	28%	19%
Special education population	10%	12%	12%
Students per teacher	19.0	18.9	18.4
Average teacher salary	\$45,816	\$46,164	\$48,951
Amount from Prop 301	\$3,964	\$5,459	\$6,411
Average years of teacher experience	7.3	9.3	11.4
Percentage of teachers in first 3 years	45%	26%	19%

Per pupil revenues

Revenues by source	District		Peer average 2018	State average 2018
	2017	2018		
Federal	\$ 1,712	\$ 1,711	\$ 1,723	\$ 1,317
State	3,776	3,780	3,921	4,011
Local	3,738	3,427	4,869	4,592
Total per pupil revenues	\$ 9,226	\$ 8,918	\$ 10,513	\$ 9,920

Select revenues from common sources

Source	District	Peer average	State average
Equalization formula funding	\$ 4,922	\$ 4,959	\$ 5,175
Grants	1,823	1,715	1,843
Donations and tax credits	14	33	54

Select revenues from less common sources

Source	District	Peer average	State average
Desegregation	\$ 0	\$ 0	4 of 19
Small school adjustment	0	0	0 of 19
Federal impact aid	0	0	0 of 19
Voter-approved levy increases	1,267	1,373	19 of 19

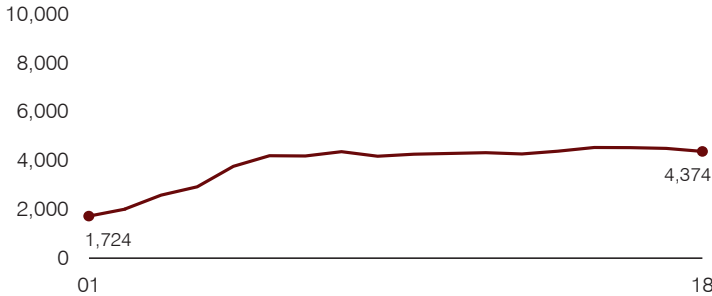
¹ See Appendix A for information such as districts included in each peer group and Appendix B for sources and methodology.

Instructional spending percentage

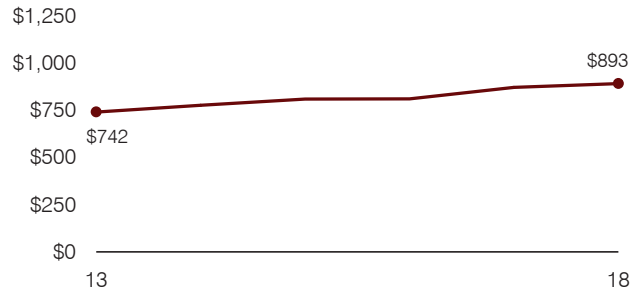
Year:	2001	2002	2003	2004	2005	2006	2007	2008	2009	2010	2011	2012	2013	2014	2015	2016	2017	2018
Percentage:	56.9	56.4	60.1	60.7	60.3	57.5	60.4	57.5	57.3	57.2	55.6	53.3	53.3	55.8	53.6	54.8	54.4	52.9

TRENDS AND FINANCIAL STRESS ASSESSMENT
Fiscal years as indicated

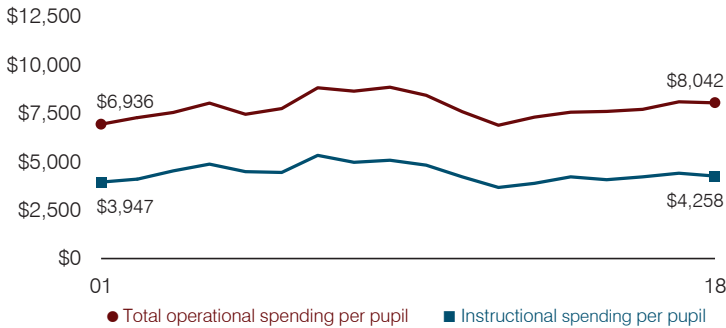
Students attending



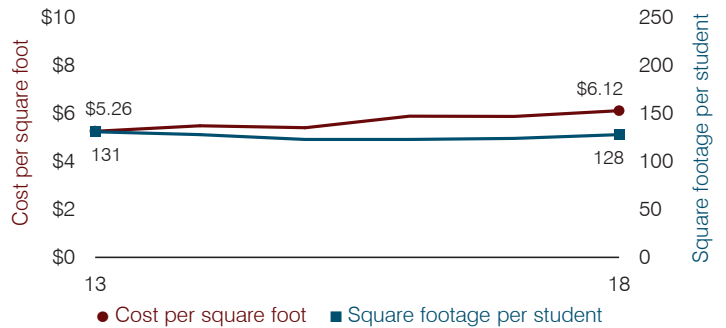
Administrative cost per pupil



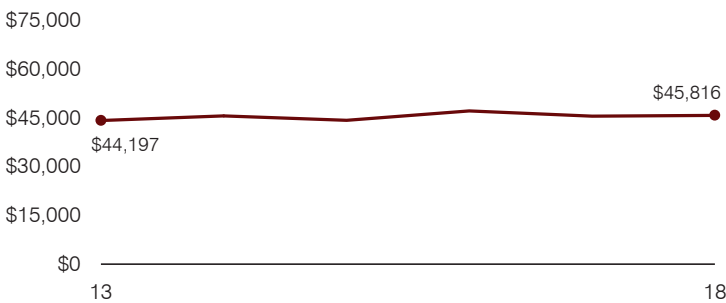
Total operational and instructional spending per pupil (inflation adjusted to 2018 dollars)



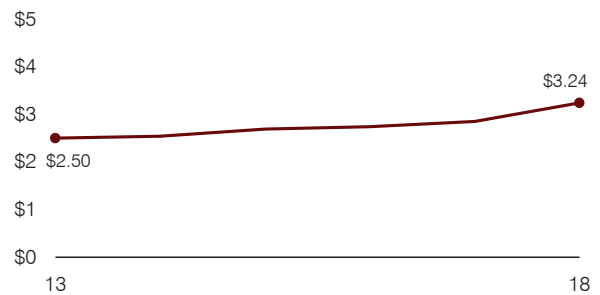
Plant cost per square foot and square footage per student



Average teacher salary



Food service cost per meal



Financial stress assessment

Overall financial stress level: Low

Measure: 2016 through 2018	Assessment
Change in number of district students	Moderate decrease
Spending exceeded operating/capital budgets	No overspending
Spending increase election results	Voter-approved
Operating reserve percentage, Trend	10.4%, Increasing
Years of capital reserve held	More than 3 years
Current financial and internal control status	Compliant

Low
Moderate
High

Transportation costs per mile and per rider

