

Fountain Hills Unified School District

Maricopa County

Efficiency peer groups 3 and T-3, Achievement peer group 1¹

Legislative district(s): 23

District size, location:

Medium, Suburb

Students attending:

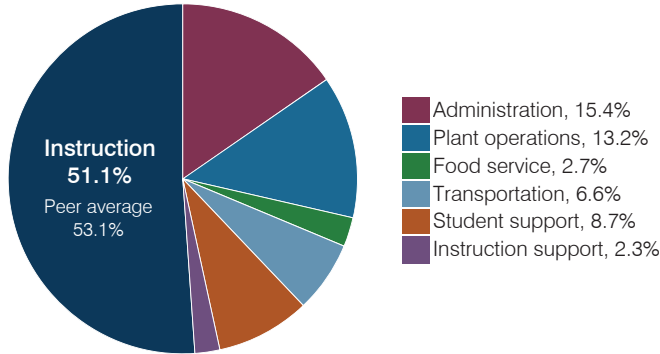
1,447

Number of schools:

3

OPERATIONAL EFFICIENCY

Spending by operational area



Efficiency measures relative to peer averages

Operational area	Measure	District	Peer average	State average
Administration	Cost per pupil	\$1,273	\$837	\$844
	Students per administrative position	57	69	67
Plant operations	Cost per square foot	\$3.87	\$6.01	\$6.30
	Square footage per student	282	157	155
Food service	Cost per meal	\$3.04	\$3.04	\$2.88
Transportation	Cost per mile	\$3.57	\$4.28	\$3.84
	Cost per rider	\$1,346	\$1,207	\$1,198

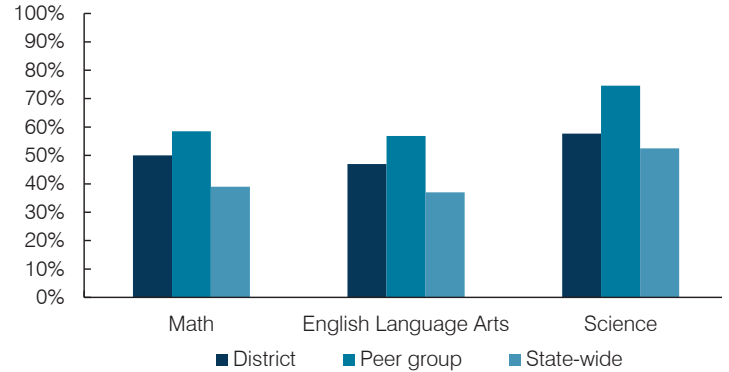
Very low
Low
Comparable
High
Very high

Per pupil spending

Spending by area	District		Peer average 2017	State average 2017
	2016	2017		
Instruction	\$ 4,020	\$ 4,210	\$ 3,991	\$ 4,377
Administration	1,293	1,273	837	844
Plant operations	1,113	1,090	965	977
Food service	225	219	324	422
Transportation	528	545	433	381
Student support	671	720	640	679
Instruction support	183	186	338	461
Total operational	\$ 8,033	\$ 8,243	\$ 7,528	\$ 8,141
Land and buildings	\$ 1,120	\$ 328	\$ 890	\$ 691
Equipment	179	1,008	406	424
Interest	225	353	258	236
Other	75	82	146	161
Total nonoperational	\$ 1,599	\$ 1,771	\$ 1,700	\$ 1,512
Total per pupil spending	\$ 9,632	\$ 10,014	\$ 9,228	\$ 9,653

STUDENT ACHIEVEMENT, STUDENT AND TEACHER MEASURES, AND REVENUES

Students who passed state assessments



Student and teacher measures

Measure	District	Peer average	State average
Attendance rate	94%	95%	94%
Graduation rate (2016)	NR	93%	80%
Poverty rate (2016)	8%	7%	22%
Special education population	9%	11%	12%
Students per teacher	16.8	18.3	18.5
Average teacher salary	\$40,527	\$44,253	\$48,372
Amount from Prop 301	\$4,012	\$5,557	\$5,840
Average years of teacher experience	9.8	11.2	11.3
Percentage of teachers in first 3 years	38%	21%	19%

Per pupil revenues

Revenues by source	District		Peer average 2017	State average 2017
	2016	2017		
Federal	\$ 1,226	\$ 760	\$ 781	\$ 1,318
State	2,009	2,172	3,243	3,831
Local	7,340	8,411	5,097	4,443
Total per pupil revenues	\$ 10,575	\$ 11,343	\$ 9,121	\$ 9,592

Select revenues from common sources

	District 2016	District 2017	Peer average 2017	State average 2017
Equalization formula funding	\$ 5,600	\$ 5,518	\$ 5,442	\$ 5,503
Amount from Prop 123	245	243	240	245
Prop 123 additional funding	50	49	47	46
Grants	1,256	851	866	1,185
Donations and tax credits	278	465	157	89

Select revenues from less common sources

	District 2016	District 2017	Number of peers receiving
Desegregation	\$ 0	\$ 0	1 of 15
Small school adjustment	0	0	0 of 15
Federal impact aid	236	185	3 of 15
Voter-approved levy increases	2,280	2,432	13 of 15

¹ See Appendix A for information such as districts included in each peer group and Appendix B for sources and methodology.

Instructional spending percentage

Year:	2001	2002	2003	2004	2005	2006	2007	2008	2009	2010	2011	2012	2013	2014	2015	2016	2017
Percentage:	56.4	60.4	55.6	53.9	56.5	57.1	57.9	57.1	56.4	52.6	54.3	54.3	54.6	54.8	54.3	50.0	51.1

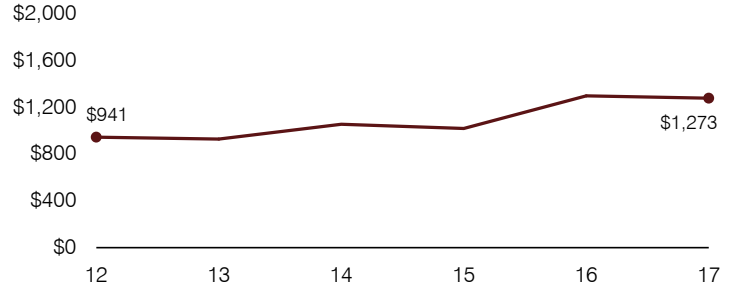
OPERATIONAL TRENDS AND FINANCIAL STRESS ASSESSMENT

Fiscal years as indicated

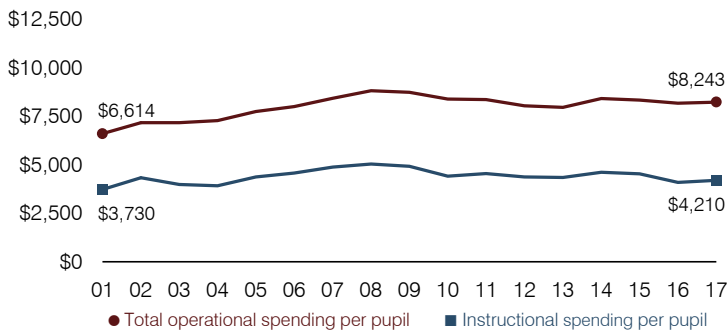
5-year spending trend (2012 through 2017)

Total operational spending per pupil, adjusted for inflation, increased by 2 percent. The percentage of dollars spent on instruction decreased overall from 54.3 to 51.1 percent. Overall, as a percentage of total operational spending, administration increased substantially and plant operations and student support increased, while food service and instruction support decreased. Transportation varied year to year.

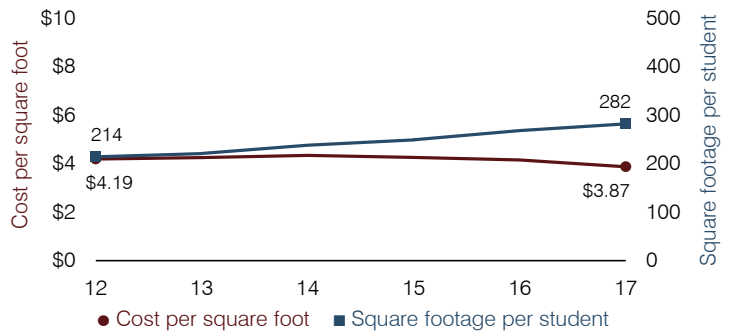
Administrative cost per pupil



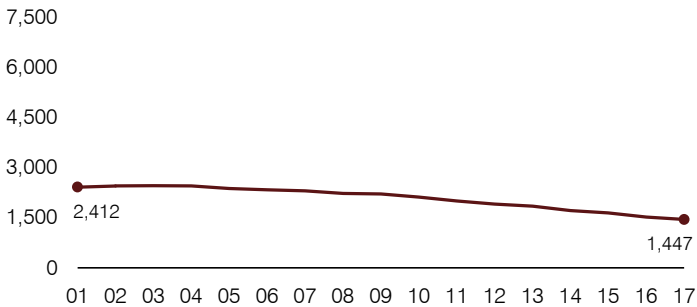
Total operational and instructional spending per pupil (inflation adjusted to 2017 dollars)



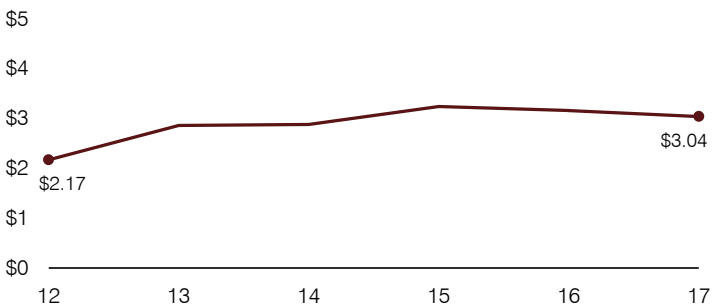
Plant cost per square foot and square footage per student



Students attending



Food service cost per meal



Financial stress assessment

Overall financial stress level: Low

Measure: 2015 through 2017

	Assessment
Change in number of district students	Large decrease
Spending exceeded operating/capital budgets	No overspending
Spending increase election results	Voter-approved
Operating reserve percentage, Trend	7.8%, Increasing
Years of capital reserve held	More than 3 years
Current financial and internal control status	Compliant

Low

Moderate

High

Transportation costs per mile and per rider

