

Eloy Elementary School District

Pinal County

Efficiency peer groups 9 and T-6, Achievement peer group 19¹

Legislative district(s): 8 and 11

District size, location:

Medium, Rural

Students attending:

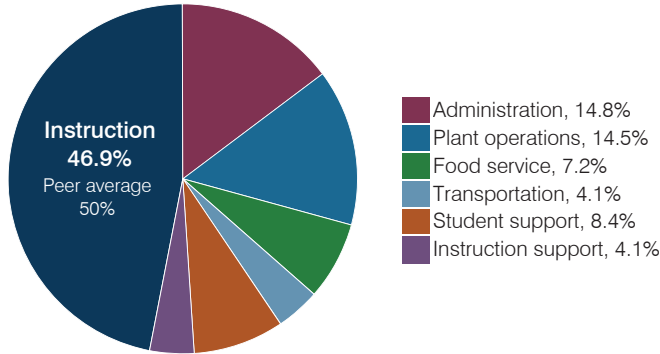
836

Number of schools:

3

OPERATIONAL EFFICIENCY

Spending by operational area



Efficiency measures relative to peer averages

Operational area	Measure	District	Peer average	State average
Administration	Cost per pupil	\$1,350	\$1,060	\$844
	Students per administrative position	40	58	67
Plant operations	Cost per square foot	\$7.00	\$6.71	\$6.30
	Square footage per student	189	153	155
Food service	Cost per meal	\$3.10	\$3.04	\$2.88
Transportation	Cost per mile	\$3.68	\$3.94	\$3.84
	Cost per rider	\$1,181	\$728	\$1,198

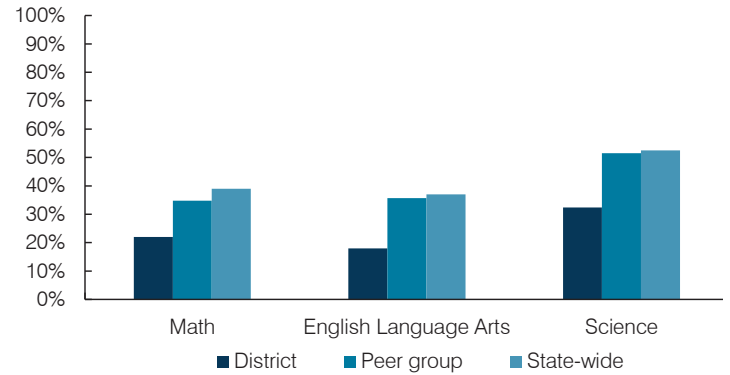
Very low Low Comparable High Very high

Per pupil spending

Spending by area	District		Peer average 2017	State average 2017
	2016	2017		
Instruction	\$ 4,188	\$ 4,259	\$ 4,115	\$ 4,377
Administration	1,386	1,350	1,060	844
Plant operations	1,202	1,322	1,004	977
Food service	654	653	571	422
Transportation	300	373	427	381
Student support	711	760	528	679
Instruction support	411	370	463	461
Total operational	\$ 8,852	\$ 9,087	\$ 8,168	\$ 8,141
Land and buildings	\$ 90	\$ 1,270	\$ 917	\$ 691
Equipment	276	247	314	424
Interest	72	81	77	236
Other	2	4	148	161
Total nonoperational	\$ 440	\$ 1,602	\$ 1,456	\$ 1,512
Total per pupil spending	\$ 9,292	\$ 10,689	\$ 9,624	\$ 9,653

STUDENT ACHIEVEMENT, STUDENT AND TEACHER MEASURES, AND REVENUES

Students who passed state assessments



Student and teacher measures

Measure	District	Peer average	State average
Attendance rate	94%	93%	94%
Graduation rate (2016)	N/A	N/A	N/A
Poverty rate (2016)	38%	34%	22%
Special education population	11%	15%	12%
Students per teacher	17.4	14.8	18.5
Average teacher salary	\$41,550	\$46,717	\$48,372
Amount from Prop 301	\$4,329	\$4,152	\$5,840
Average years of teacher experience	14.1	11.3	11.3
Percentage of teachers in first 3 years	16%	16%	19%

Per pupil revenues

Revenues by source	District		Peer average 2017	State average 2017
	2016	2017		
Federal	\$ 2,847	\$ 2,733	\$ 1,753	\$ 1,318
State	5,284	6,432	4,842	3,831
Local	1,634	1,666	2,654	4,443
Total per pupil revenues	\$ 9,765	\$ 10,831	\$ 9,249	\$ 9,592

Select revenues from common sources

	District 2016	District 2017	Peer average	State average
Equalization formula funding	\$ 5,618	\$ 5,517	\$ 5,748	\$ 5,503
Amount from Prop 123	234	232	239	245
Prop 123 additional funding	46	44	44	46
Grants	2,851	3,968	2,064	1,185
Donations and tax credits	12	18	69	89

Select revenues from less common sources

	District 2016	District 2017	Number of peers receiving
Desegregation	\$ 0	\$ 0	0 of 10
Small school adjustment	0	0	0 of 10
Federal impact aid	0	0	3 of 10
Voter-approved levy increases	644	683	8 of 10

¹ See Appendix A for information such as districts included in each peer group and Appendix B for sources and methodology.

Instructional spending percentage

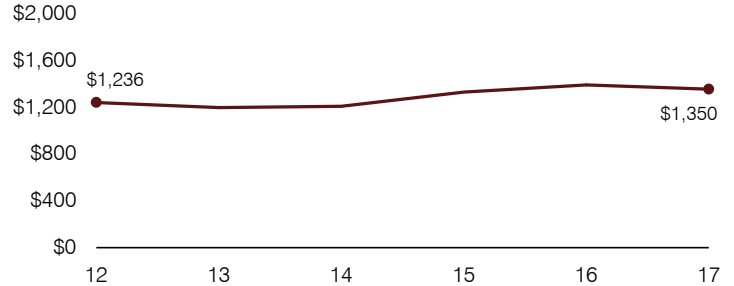
Year:	2001	2002	2003	2004	2005	2006	2007	2008	2009	2010	2011	2012	2013	2014	2015	2016	2017
Percentage:	56.9	54.4	54.0	52.2	51.3	52.9	52.4	51.5	50.7	47.5	47.9	47.0	46.7	43.9	44.7	47.3	46.9

OPERATIONAL TRENDS AND FINANCIAL STRESS ASSESSMENT
Fiscal years as indicated

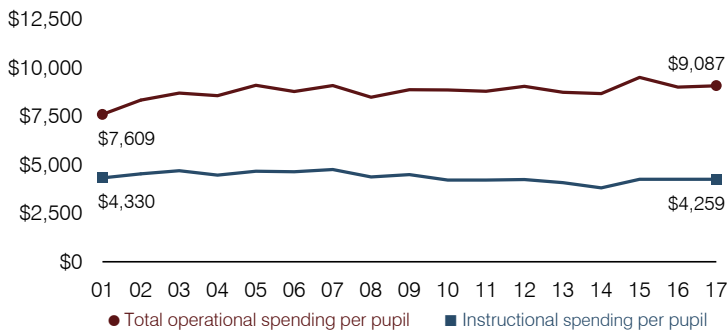
5-year spending trend (2012 through 2017)

Total operational spending per pupil, adjusted for inflation, returned to 2012 levels. The percentage of dollars spent on instruction varied year to year, ranging overall from a high of 47.3 to a low of 43.9 percent. Overall, as a percentage of total operational spending, plant operations increased substantially, while food service decreased and student support decreased slightly. Other noninstructional areas varied year to year.

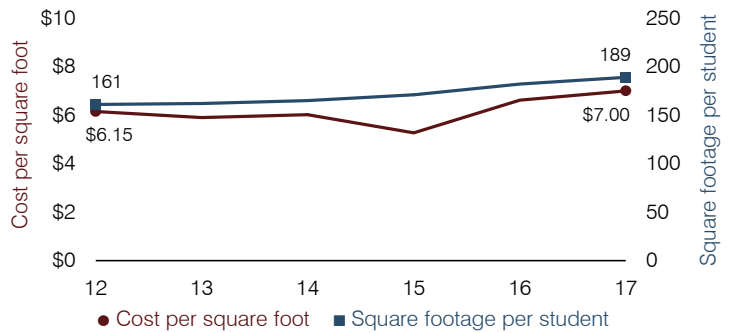
Administrative cost per pupil



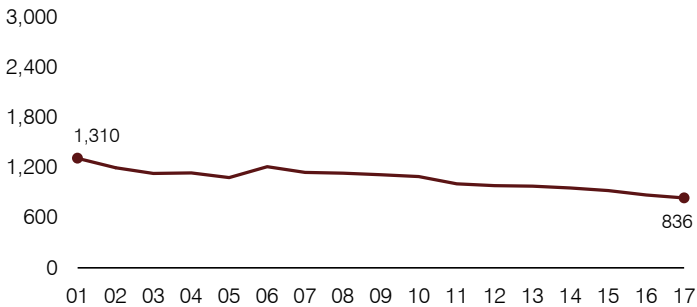
Total operational and instructional spending per pupil (inflation adjusted to 2017 dollars)



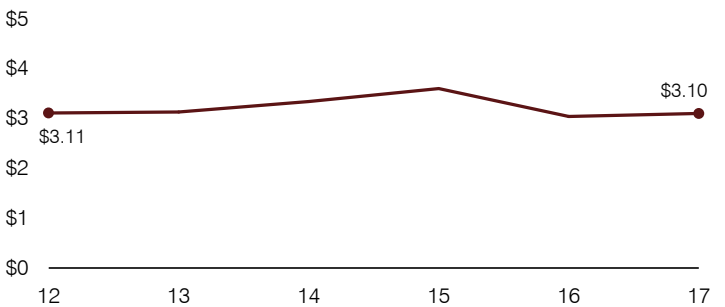
Plant cost per square foot and square footage per student



Students attending



Food service cost per meal



Financial stress assessment

Overall financial stress level: **Moderate**

Measure: 2015 through 2017	Assessment
Change in number of district students	Moderate decrease
Spending exceeded operating/capital budgets	No overspending
Spending increase election results	No election held
Operating reserve percentage, Trend	7.6%, Varying
Years of capital reserve held	1 to 3 years
Current financial and internal control status	Marginally compliant

Low
Moderate
High

Transportation costs per mile and per rider

