

Deer Valley Unified School District

Maricopa County

Efficiency peer groups 1 and T-3, Achievement peer group 2¹

Legislative district(s): 1, 15, 20, and 22

District size, location:

Very large, Suburb

Students attending:

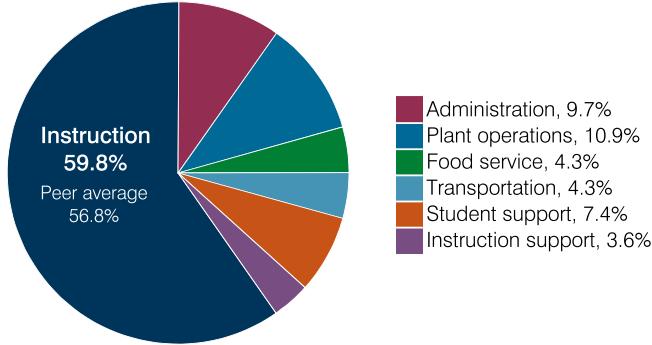
32,571

Number of schools:

38

OPERATIONAL EFFICIENCY

Spending by operational area



Efficiency measures relative to peer averages

Operational area	Measure	District	Peer average	State average
Administration	Cost per pupil	\$738	\$712	\$860
	Students per administrative position	85	80	66
Plant operations	Cost per square foot	\$5.96	\$6.18	\$6.34
	Square footage per student	139	149	156
Food service	Cost per meal	\$2.97	\$2.87	\$3.02
Transportation	Cost per mile	\$5.10	\$4.47	\$4.05
	Cost per rider	\$1,342	\$1,248	\$1,301

Very low Low Comparable High Very high

Per pupil spending

Spending by area	District		Peer average 2018	State average 2018
	2017	2018		
Instruction	\$ 4,483	\$ 4,542	\$ 4,531	\$ 4,480
Administration	733	738	712	860
Plant operations	810	826	916	988
Food service	305	328	331	425
Transportation	307	323	358	388
Student support	562	559	704	693
Instruction support	278	276	395	462
Total operational	7,478	7,592	7,947	8,296
Land and buildings	735	577	631	827
Equipment	300	259	317	409
Interest	185	151	232	228
Other	266	262	207	169
Total nonoperational	1,486	1,249	1,387	1,633
Total per pupil spending	\$ 8,964	\$ 8,841	\$ 9,334	\$ 9,929

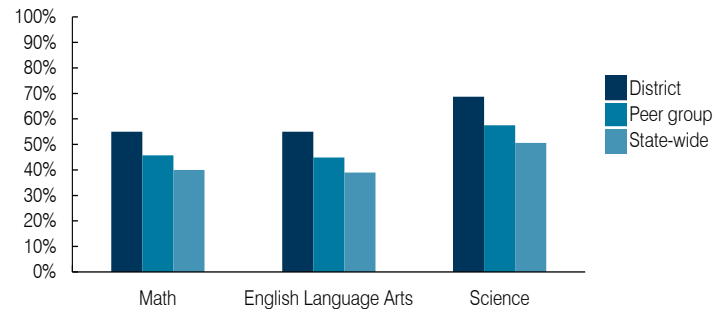
¹ See Appendix A for information such as districts included in each peer group and Appendix B for sources and methodology.

STUDENT ACHIEVEMENT, STUDENT AND TEACHER MEASURES, AND REVENUES

ADE-assigned school letter grades

Grade	Number of schools	Percentage of schools
A	24	63%
B	11	28%
C	1	3%
D	1	3%
F	1	3%

Students who passed State assessments



Student and teacher measures

Measure	District	Peer average	State average
Attendance rate	95%	94%	94%
Graduation rate (2017)	94%	90%	78%
Poverty rate (2017)	9%	12%	19%
Special education population	11%	13%	12%
Students per teacher	17.2	18.5	18.4
Average teacher salary	\$45,552	\$47,265	\$48,951
Amount from Prop 301	\$6,029	\$6,556	\$6,411
Average years of teacher experience	12.5	11.5	11.4
Percentage of teachers in first 3 years	16%	19%	19%

Per pupil revenues

Revenues by source	District		Peer average 2018	State average 2018
	2017	2018		
Federal	\$ 682	\$ 661	\$ 875	\$ 1,317
State	3,205	3,316	3,546	4,011
Local	4,955	5,250	5,443	4,592
Total per pupil revenues	\$ 8,842	\$ 9,227	\$ 9,864	\$ 9,920

Select revenues from common sources

Equalization formula funding	\$ 5,165	\$ 5,240	\$ 5,492	\$ 5,585
Grants	705	727	937	1,241
Donations and tax credits	84	91	94	90

Select revenues from less common sources

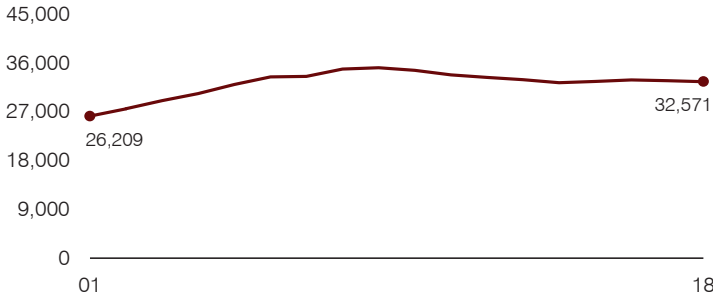
			Number of peers receiving
Desegregation	\$ 0	\$ 0	4 of 10
Small school adjustment	0	0	0 of 10
Federal impact aid	0	0	2 of 10
Voter-approved levy increases	1,721	1,849	10 of 10

Instructional spending percentage

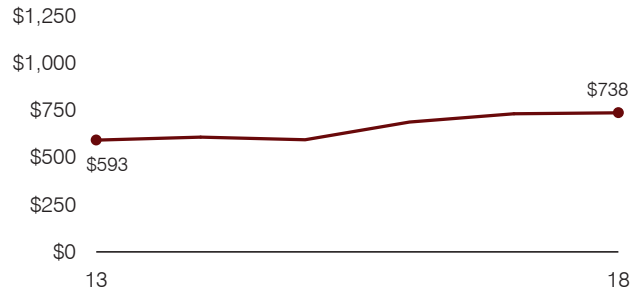
Year: 2001 2002 2003 2004 2005 2006 2007 2008 2009 2010 2011 2012 2013 2014 2015 2016 2017 2018
 Percentage: 60.1 62.2 61.6 62.8 61.9 61.2 60.5 61.5 60.6 60.6 59.6 58.9 58.6 58.3 60.7 58.5 60.0 59.8

TRENDS AND FINANCIAL STRESS ASSESSMENT
 Fiscal years as indicated

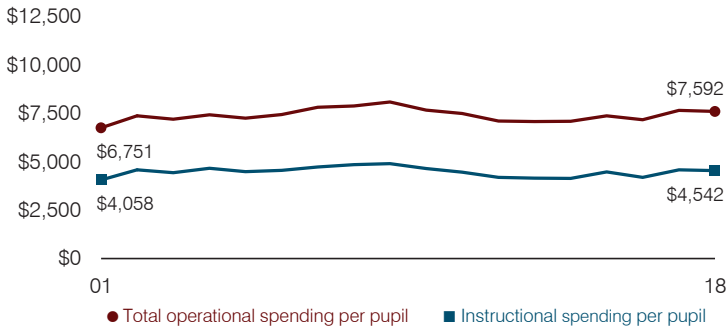
Students attending



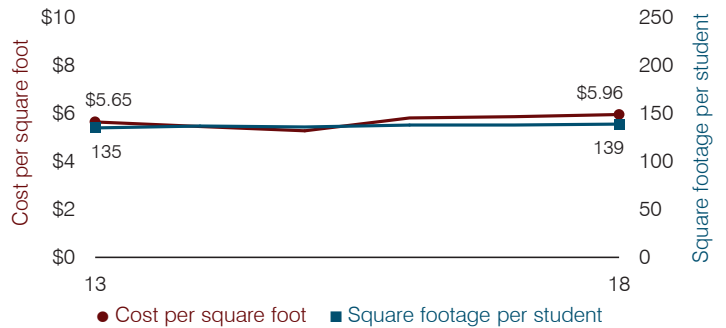
Administrative cost per pupil



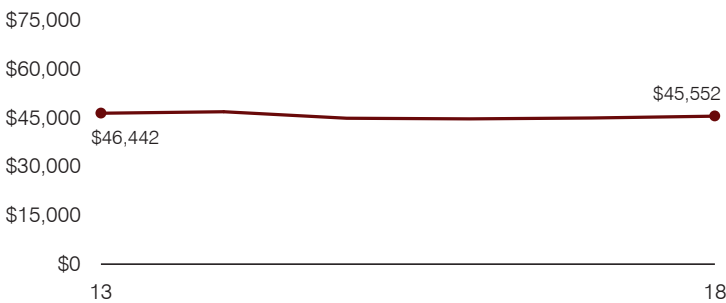
Total operational and instructional spending per pupil (inflation adjusted to 2018 dollars)



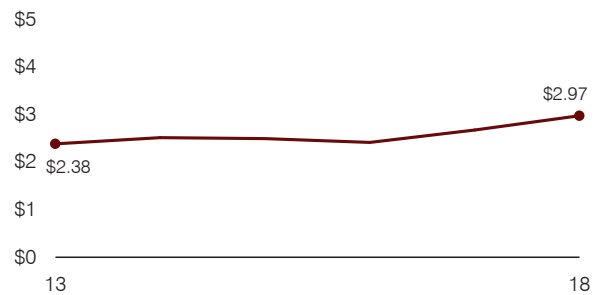
Plant cost per square foot and square footage per student



Average teacher salary



Food service cost per meal



Financial stress assessment

Overall financial stress level: **Moderate**

Measure: 2016 through 2018	Assessment
Change in number of district students	Steady
Spending exceeded operating/capital budgets	No overspending
Spending increase election results	No election held
Operating reserve percentage, Trend	1.9%, Varying
Years of capital reserve held	1 to 3 years
Current financial and internal control status	Compliant

Low
Moderate
High

Transportation costs per mile and per rider

