

# Colorado River Union High School District

Mohave County

Efficiency peer groups 5 and T-10, Achievement peer group 11<sup>1</sup>

Legislative district(s): 5

District size, location:

Medium, Town

Students attending:

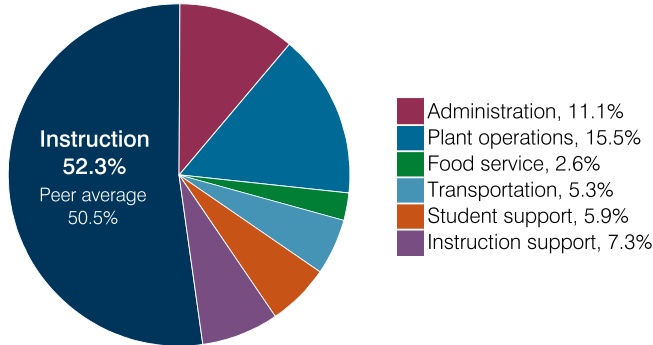
1,800

Number of schools:

2

## OPERATIONAL EFFICIENCY

### Spending by operational area



### Efficiency measures relative to peer averages

Operational area	Measure	District	Peer average	State average
Administration	Cost per pupil	\$898	\$1,221	\$860
	Students per administrative position	55	54	66
Plant operations	Cost per square foot	\$5.41	\$5.43	\$6.34
	Square footage per student	232	257	156
Food service	Cost per meal	\$2.95	\$3.66	\$3.02
Transportation	Cost per mile	\$2.42	\$1.95	\$4.05
	Cost per rider	\$1,474	\$1,572	\$1,301

Very low
Low
Comparable
High
Very high

### Per pupil spending

Spending by area	District		Peer average 2018	State average 2018
	2017	2018		
Instruction	\$ 4,309	\$ 4,230	\$ 4,824	\$ 4,480
Administration	1,010	898	1,221	860
Plant operations	1,389	1,257	1,365	988
Food service	239	208	437	425
Transportation	404	429	532	388
Student support	531	477	623	693
Instruction support	595	585	359	462
<b>Total operational</b>	<b>8,477</b>	<b>8,084</b>	<b>9,361</b>	<b>8,296</b>
Land and buildings	856	5,667	799	827
Equipment	557	398	433	409
Interest	31	1,004	248	228
Other	111	136	71	169
<b>Total nonoperational</b>	<b>1,555</b>	<b>7,205</b>	<b>1,551</b>	<b>1,633</b>
<b>Total per pupil spending</b>	<b>\$ 10,032</b>	<b>\$ 15,289</b>	<b>\$ 10,912</b>	<b>\$ 9,929</b>

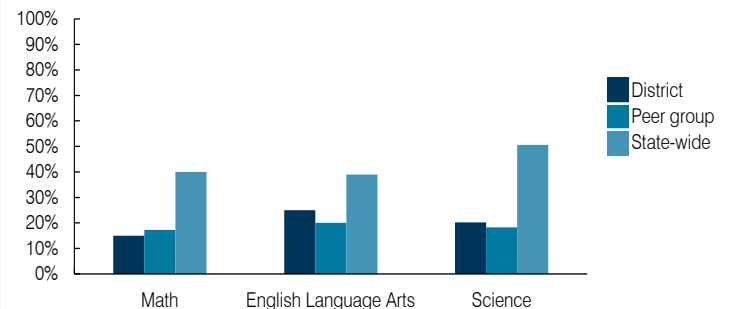
<sup>1</sup> See Appendix A for information such as districts included in each peer group and Appendix B for sources and methodology.

## STUDENT ACHIEVEMENT, STUDENT AND TEACHER MEASURES, AND REVENUES

### ADE-assigned school letter grades

Grade	Number of schools	Percentage of schools
A	0	0%
B	0	0%
C	2	100%
D	0	0%
F	0	0%

### Students who passed State assessments



### Student and teacher measures

Measure	District	Peer average	State average
Attendance rate	93%	92%	94%
Graduation rate (2017)	81%	76%	78%
Poverty rate (2017)	21%	21%	19%
Special education population	12%	12%	12%
Students per teacher	20.0	18.6	18.4
Average teacher salary	\$40,713	\$46,495	\$48,951
Amount from Prop 301	\$4,776	\$6,895	\$6,411
Average years of teacher experience	10.6	12.4	11.4
Percentage of teachers in first 3 years	26%	13%	19%

### Per pupil revenues

Revenues by source	District		Peer average 2018	State average 2018
	2017	2018		
Federal	\$ 1,217	\$ 1,039	\$ 3,917	\$ 1,317
State	2,135	1,771	4,283	4,011
Local	6,169	7,382	4,207	4,592
<b>Total per pupil revenues</b>	<b>\$ 9,521</b>	<b>\$ 10,192</b>	<b>\$ 12,407</b>	<b>\$ 9,920</b>

### Select revenues from common sources

Source	District	Peer average	State average
Equalization formula funding	\$ 6,107	\$ 5,719	\$ 5,992
Grants	1,654	1,147	1,703
Donations and tax credits	58	49	147

### Select revenues from less common sources

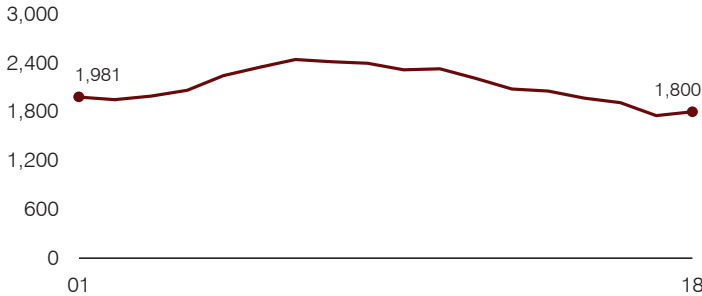
Source	District	Peer average	Number of peers receiving
Desegregation	\$ 0	\$ 0	0 of 31
Small school adjustment	0	0	0 of 31
Federal impact aid	0	0	16 of 31
Voter-approved levy increases	8	1,206	21 of 31

**Instructional spending percentage**

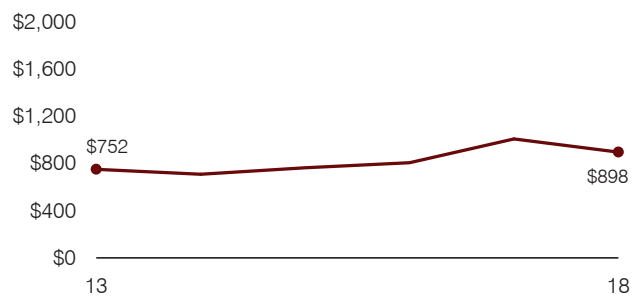
Year: 2001 2002 2003 2004 2005 2006 2007 2008 2009 2010 2011 2012 2013 2014 2015 2016 2017 2018  
 Percentage: 52.1 55.0 58.8 55.6 58.2 58.3 60.4 60.7 59.1 60.9 56.0 52.3 52.7 50.2 51.9 52.9 50.8 52.3

**TRENDS AND FINANCIAL STRESS ASSESSMENT**  
 Fiscal years as indicated

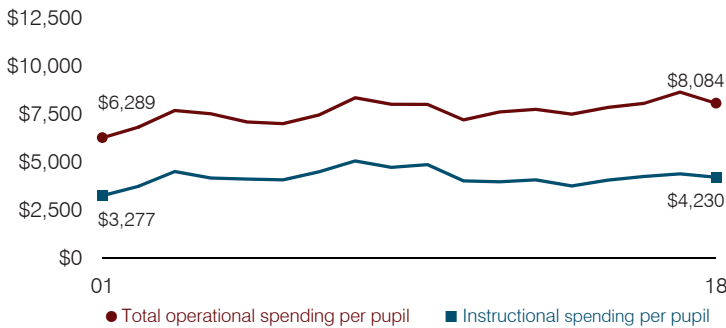
**Students attending**



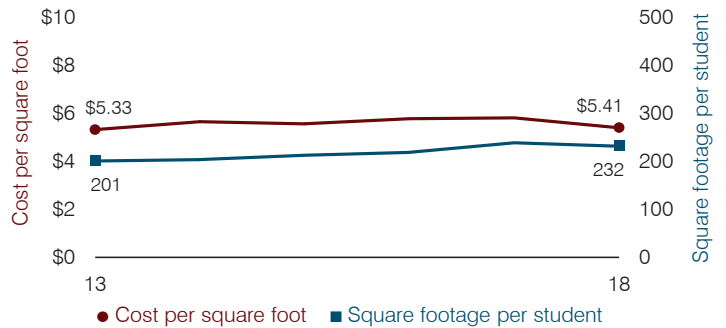
**Administrative cost per pupil**



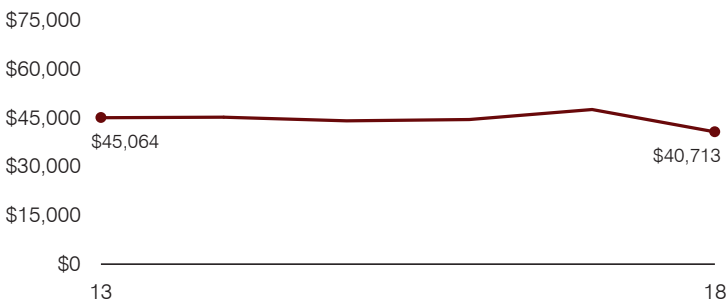
**Total operational and instructional spending per pupil (inflation adjusted to 2018 dollars)**



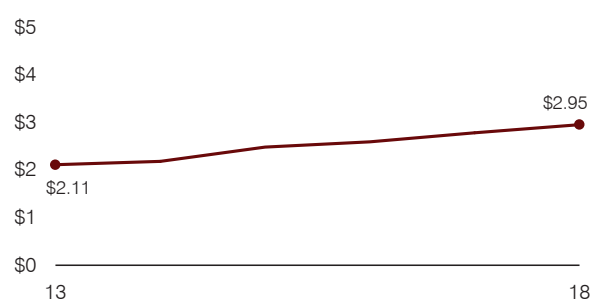
**Plant cost per square foot and square footage per student**



**Average teacher salary**



**Food service cost per meal**



**Financial stress assessment**

Overall financial stress level: **Low**

Measure: 2016 through 2018	Assessment
Change in number of district students	Moderate decrease
Spending exceeded operating/capital budgets	No overspending
Spending increase election results	Voter-approved
Operating reserve percentage, Trend	3.8%, Decreasing
Years of capital reserve held	1 to 3 years
Current financial and internal control status	Compliant

Low
Moderate
High

**Transportation costs per mile and per rider**

