

Chinle Unified School District

Apache County

Efficiency peer groups 4 and T-9, Achievement peer group 7¹

Legislative district(s): 7

District size, location:

Medium-large, Town

Students attending:

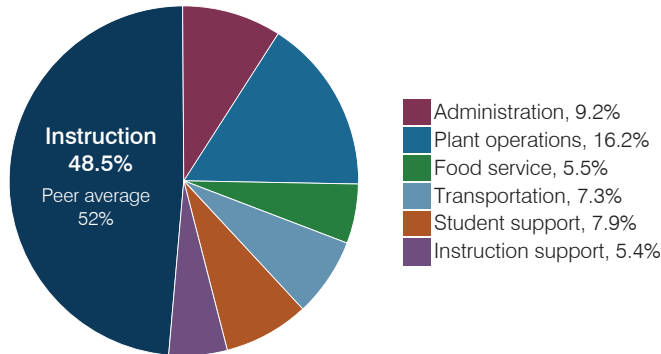
3,340

Number of schools:

7

OPERATIONAL EFFICIENCY

Spending by operational area



Efficiency measures relative to peer averages

Operational area	Measure	District	Peer average	State average
Administration	Cost per pupil	\$1,255	\$844	\$844
	Students per administrative position	53	69	67
Plant operations	Cost per square foot	\$7.56	\$5.36	\$6.30
	Square footage per student	292	190	155
Food service	Cost per meal	\$3.38	\$3.00	\$2.88
Transportation	Cost per mile	\$2.89	\$2.60	\$3.84
	Cost per rider	\$1,254	\$1,363	\$1,198

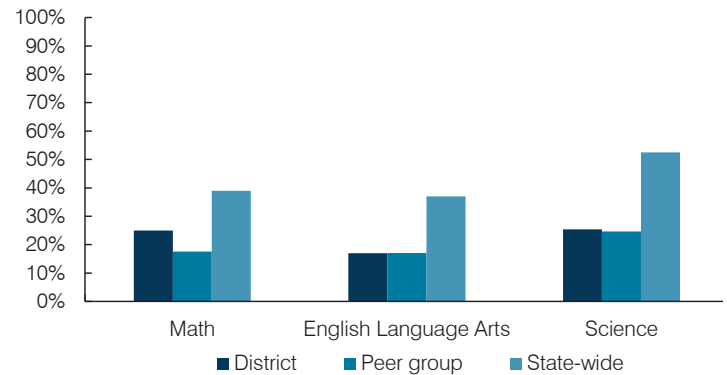
Very low Low Comparable High Very high

Per pupil spending

Spending by area	District		Peer average 2017	State average 2017
	2016	2017		
Instruction	\$ 6,661	\$ 6,629	\$ 4,032	\$ 4,377
Administration	1,240	1,255	844	844
Plant operations	1,978	2,208	987	977
Food service	686	752	409	422
Transportation	986	999	414	381
Student support	1,083	1,069	607	679
Instruction support	709	741	481	461
Total operational	\$ 13,343	\$ 13,653	\$ 7,774	\$ 8,141
Land and buildings	\$ 1,249	\$ 959	\$ 346	\$ 691
Equipment	1,168	1,239	390	424
Interest	0	0	164	236
Other	17	63	77	161
Total nonoperational	\$ 2,434	\$ 2,261	\$ 977	\$ 1,512
Total per pupil spending	\$ 15,777	\$ 15,914	\$ 8,751	\$ 9,653

STUDENT ACHIEVEMENT, STUDENT AND TEACHER MEASURES, AND REVENUES

Students who passed state assessments



Student and teacher measures

Measure	District	Peer average	State average
Attendance rate	92%	92%	94%
Graduation rate (2016)	67%	79%	80%
Poverty rate (2016)	45%	43%	22%
Special education population	NR	12%	12%
Students per teacher	16.4	15.3	18.5
Average teacher salary	\$60,899	\$48,972	\$48,372
Amount from Prop 301	\$3,118	\$4,489	\$5,840
Average years of teacher experience	14.1	12.6	11.3
Percentage of teachers in first 3 years	11%	16%	19%

Per pupil revenues

Revenues by source	District		Peer average 2017	State average 2017
	2016	2017		
Federal	\$ 9,726	\$ 10,453	\$ 2,260	\$ 1,318
State	6,046	6,499	4,086	3,831
Local	1,222	1,192	3,104	4,443
Total per pupil revenues	\$ 16,994	\$ 18,144	\$ 9,450	\$ 9,592

Select revenues from common sources

	District	Peer average	State average
Equalization formula funding	\$ 5,981	\$ 5,975	\$ 5,373
Amount from Prop 123	229	230	233
Prop 123 additional funding	46	47	46
Grants	3,015	3,014	1,374
Donations and tax credits	28	54	56

Select revenues from less common sources

	District	Peer average	Number of peers receiving
Desegregation	\$ 0	\$ 0	1 of 18
Small school adjustment	0	0	0 of 18
Federal impact aid	6,774	7,730	7 of 18
Voter-approved levy increases	0	0	14 of 18

¹ See Appendix A for information such as districts included in each peer group and Appendix B for sources and methodology.

Instructional spending percentage

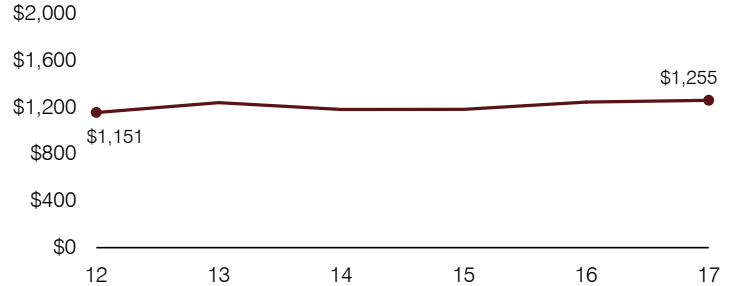
Year:	2001	2002	2003	2004	2005	2006	2007	2008	2009	2010	2011	2012	2013	2014	2015	2016	2017
Percentage:	47.7	48.0	50.2	50.8	51.1	49.6	48.3	48.6	49.4	47.0	47.5	49.0	48.4	48.4	46.6	49.9	48.5

OPERATIONAL TRENDS AND FINANCIAL STRESS ASSESSMENT
Fiscal years as indicated

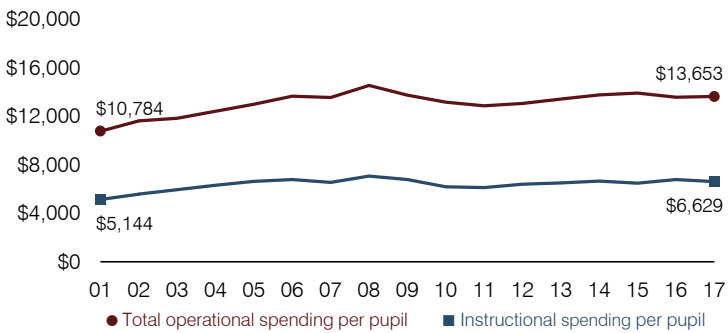
5-year spending trend (2012 through 2017)

Total operational spending per pupil, adjusted for inflation, increased by 4 percent. The percentage of dollars spent on instruction varied year to year, ranging overall from a high of 49.9 to a low of 46.6 percent. Overall, as a percentage of total operational spending, instruction support increased and plant operations and food service increased slightly, while transportation and student support decreased.

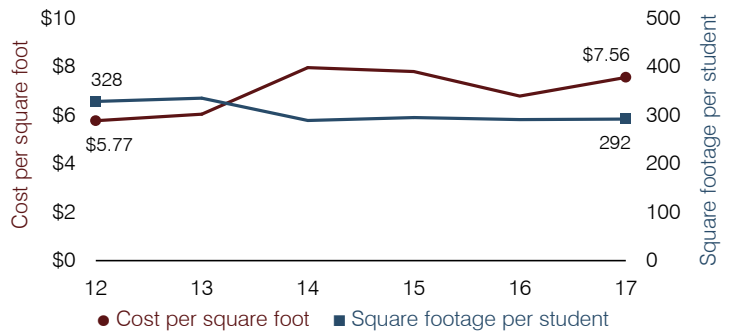
Administrative cost per pupil



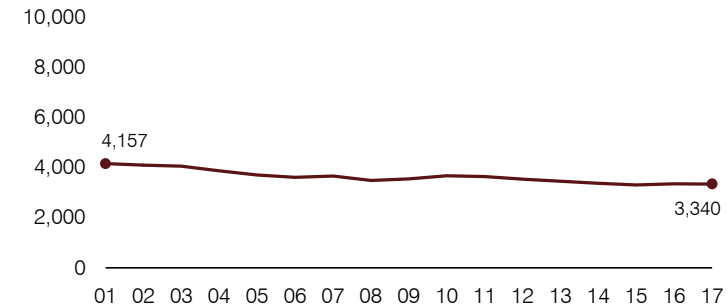
Total operational and instructional spending per pupil (inflation adjusted to 2017 dollars)



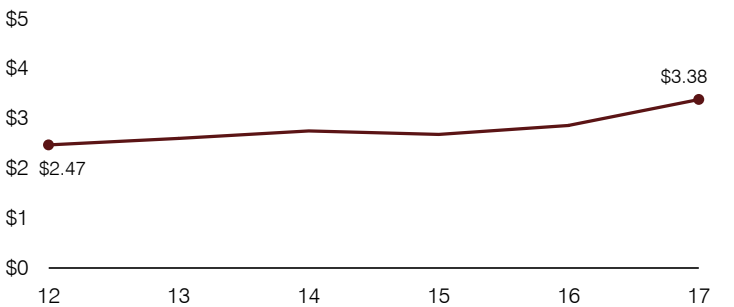
Plant cost per square foot and square footage per student



Students attending



Food service cost per meal



Financial stress assessment

Overall financial stress level: **Low**

Measure: 2015 through 2017	Assessment
Change in number of district students	Steady
Spending exceeded operating/capital budgets	Isolated
Spending increase election results	No election held
Operating reserve percentage, Trend	3.8%, Varying
Years of capital reserve held	Impact Aid Fund reserve
Current financial and internal control status	Compliant

Low
Moderate
High

Transportation costs per mile and per rider

