

Camp Verde Unified School District

Yavapai County

Efficiency peer groups 5 and T-8, Achievement peer group 5¹

Legislative district(s): 1 and 6

District size, location:

Medium, Rural

Students attending:

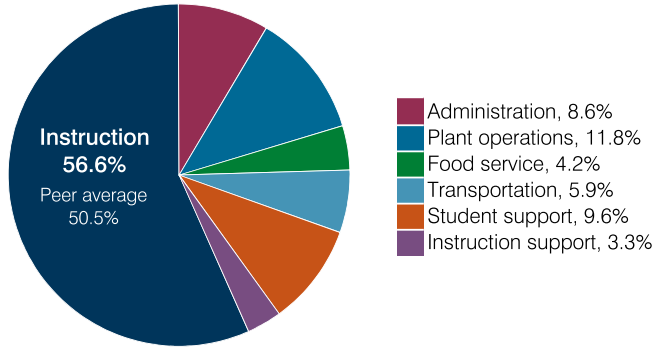
1,475

Number of schools:

3

OPERATIONAL EFFICIENCY

Spending by operational area



Efficiency measures relative to peer averages

Operational area	Measure	District	Peer average	State average
Administration	Cost per pupil	\$706	\$1,221	\$860
	Students per administrative position	57	54	66
Plant operations	Cost per square foot	\$6.11	\$5.43	\$6.34
	Square footage per student	158	257	156
Food service	Cost per meal	\$3.22	\$3.66	\$3.02
Transportation	Cost per mile	\$4.01	\$3.03	\$4.05
	Cost per rider	\$1,012	\$1,225	\$1,301

Very low Low Comparable High Very high

Per pupil spending

Spending by area	District		Peer average 2018	State average 2018
	2017	2018		
Instruction	\$ 4,456	\$ 4,651	\$ 4,824	\$ 4,480
Administration	682	706	1,221	860
Plant operations	963	967	1,365	988
Food service	331	344	437	425
Transportation	451	487	532	388
Student support	663	789	623	693
Instruction support	315	273	359	462
Total operational	7,861	8,217	9,361	8,296
Land and buildings	200	22	799	827
Equipment	326	274	433	409
Interest	74	45	248	228
Other	12	12	71	169
Total nonoperational	612	353	1,551	1,633
Total per pupil spending	\$ 8,473	\$ 8,570	\$10,912	\$ 9,929

¹ See Appendix A for information such as districts included in each peer group and Appendix B for sources and methodology.

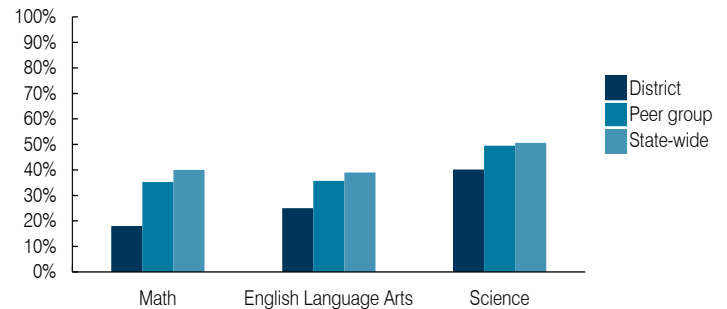
STUDENT ACHIEVEMENT, STUDENT AND TEACHER MEASURES, AND REVENUES

ADE-assigned school letter grades

Grade	Number of schools ²	Percentage of schools
A	0	0%
B	0	0%
C	3	75%
D	0	0%
F	1	25%

² Includes schools that share a campus.

Students who passed State assessments



Student and teacher measures

Measure	District	Peer average	State average
Attendance rate	92%	93%	94%
Graduation rate (2017)	89%	86%	78%
Poverty rate (2017)	21%	22%	19%
Special education population	13%	13%	12%
Students per teacher	17.0	17.6	18.4
Average teacher salary	\$48,989	\$44,777	\$48,951
Amount from Prop 301	\$6,616	\$6,708	\$6,411
Average years of teacher experience	10.9	13.0	11.4
Percentage of teachers in first 3 years	7%	17%	19%

Per pupil revenues

Revenues by source	District		Peer average 2018	State average 2018
	2017	2018		
Federal	\$ 1,265	\$ 1,290	\$ 3,917	\$ 1,317
State	3,610	3,645	4,283	4,011
Local	3,084	3,499	4,207	4,592
Total per pupil revenues	\$ 7,959	\$ 8,434	\$ 12,407	\$ 9,920

Select revenues from common sources

Equalization formula funding	\$ 5,239	\$ 5,459	\$ 5,992	\$ 5,585
Grants	1,267	1,210	1,703	1,241
Donations and tax credits	63	68	147	90

Select revenues from less common sources

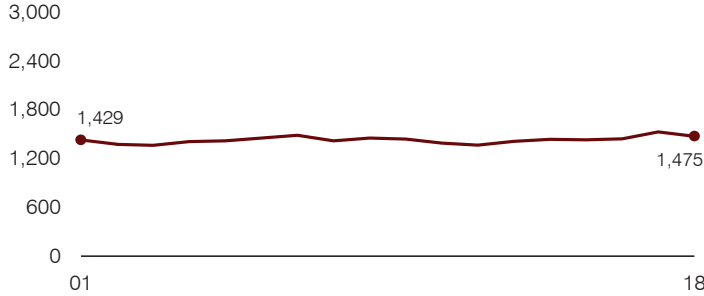
			Number of peers receiving
Desegregation	\$ 0	\$ 0	0 of 31
Small school adjustment	0	0	0 of 31
Federal impact aid	171	133	16 of 31
Voter-approved levy increases	0	0	21 of 31

Instructional spending percentage

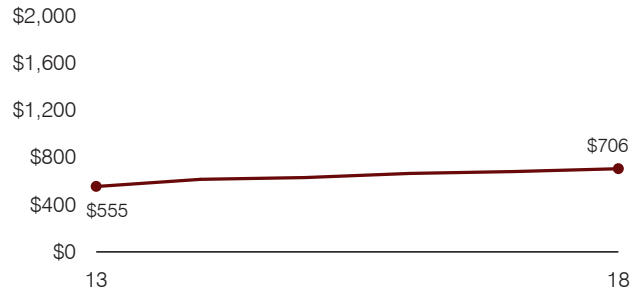
Year:	2001	2002	2003	2004	2005	2006	2007	2008	2009	2010	2011	2012	2013	2014	2015	2016	2017	2018
Percentage:	55.2	56.2	53.8	56.3	55.4	54.2	55.4	55.2	55.7	52.6	53.4	53.5	55.9	57.5	55.9	56.3	56.7	56.6

TRENDS AND FINANCIAL STRESS ASSESSMENT
Fiscal years as indicated

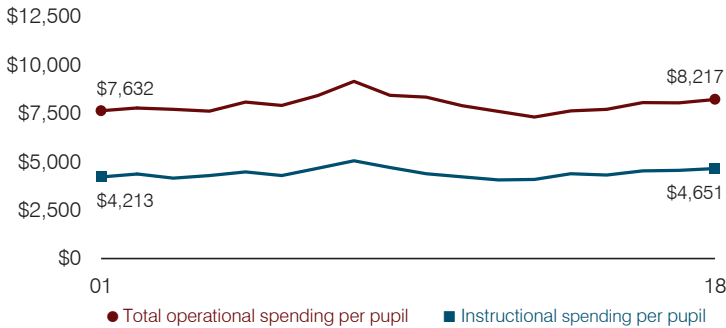
Students attending



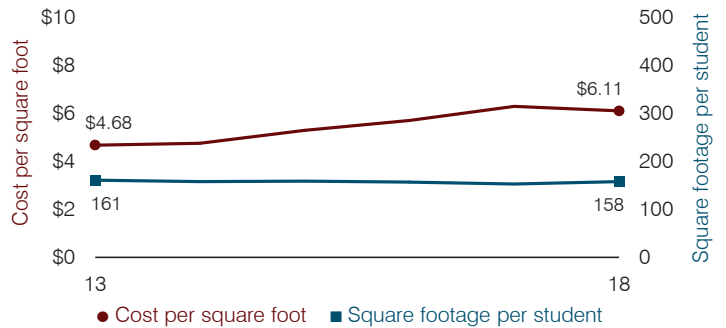
Administrative cost per pupil



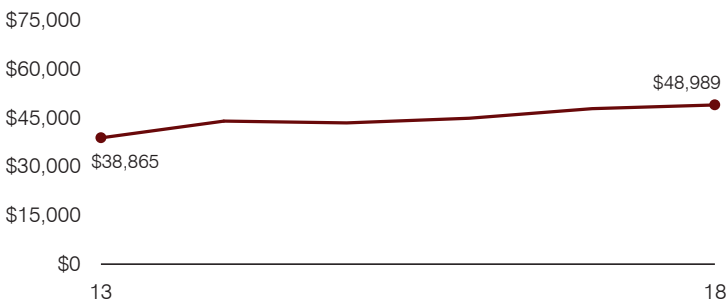
Total operational and instructional spending per pupil (inflation adjusted to 2018 dollars)



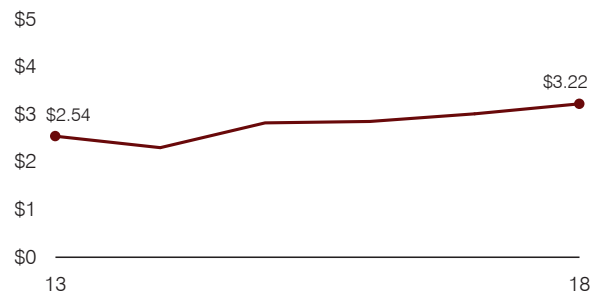
Plant cost per square foot and square footage per student



Average teacher salary



Food service cost per meal



Financial stress assessment

Overall financial stress level: **Low**

Measure: 2016 through 2018	Assessment
Change in number of district students	Steady
Spending exceeded operating/capital budgets	No overspending
Spending increase election results	No election held
Operating reserve percentage, Trend	3.6%, Decreasing
Years of capital reserve held	Impact Aid Fund reserve
Current financial and internal control status	Compliant

Low
Moderate
High

Transportation costs per mile and per rider

