

# Buckeye Union High School District

Maricopa County

Efficiency peer groups 3 and T-5, Achievement peer group 8<sup>1</sup>

Legislative district(s): 4 and 13

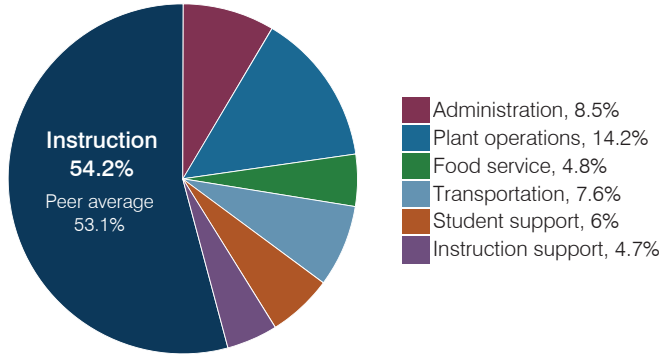
District size, location: Medium-large, Suburb

Students attending: 4,050

Number of schools: 3

## OPERATIONAL EFFICIENCY

### Spending by operational area



### Efficiency measures relative to peer averages

Operational area	Measure	District	Peer average	State average
Administration	Cost per pupil	\$737	\$837	\$844
	Students per administrative position	74	69	67
Plant operations	Cost per square foot	\$6.33	\$6.01	\$6.30
	Square footage per student	194	157	155
Food service	Cost per meal	\$3.34	\$3.04	\$2.88
Transportation	Cost per mile	\$3.12	\$4.15	\$3.84
	Cost per rider	\$1,517	\$1,809	\$1,198

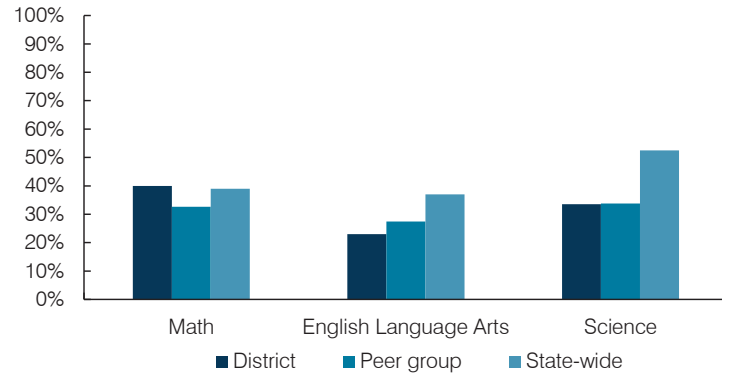
Very low   Low   Comparable   High   Very high

### Per pupil spending

Spending by area	District		Peer average 2017	State average 2017
	2016	2017		
Instruction	\$ 4,376	\$ 4,696	\$ 3,991	\$ 4,377
Administration	705	737	837	844
Plant operations	1,340	1,226	965	977
Food service	365	418	324	422
Transportation	651	661	433	381
Student support	505	520	640	679
Instruction support	328	402	338	461
<b>Total operational</b>	<b>\$ 8,270</b>	<b>\$ 8,660</b>	<b>\$ 7,528</b>	<b>\$ 8,141</b>
Land and buildings	\$ 4,023	\$ 1,829	\$ 890	\$ 691
Equipment	766	385	406	424
Interest	773	600	258	236
Other	70	68	146	161
<b>Total nonoperational</b>	<b>\$ 5,632</b>	<b>\$ 2,882</b>	<b>\$ 1,700</b>	<b>\$ 1,512</b>
<b>Total per pupil spending</b>	<b>\$ 13,902</b>	<b>\$ 11,542</b>	<b>\$ 9,228</b>	<b>\$ 9,653</b>

## STUDENT ACHIEVEMENT, STUDENT AND TEACHER MEASURES, AND REVENUES

### Students who passed state assessments



### Student and teacher measures

Measure	District	Peer average	State average
Attendance rate	89%	93%	94%
Graduation rate (2016)	91%	87%	80%
Poverty rate (2016)	15%	16%	22%
Special education population	12%	11%	12%
Students per teacher	20.9	21.7	18.5
Average teacher salary	\$53,011	\$49,138	\$48,372
Amount from Prop 301	\$8,995	\$8,138	\$5,840
Average years of teacher experience	11.0	10.3	11.3
Percentage of teachers in first 3 years	17%	22%	19%

### Per pupil revenues

Revenues by source	District		Peer average 2017	State average 2017
	2016	2017		
Federal	\$ 519	\$ 842	\$ 781	\$ 1,318
State	2,933	2,873	3,243	3,831
Local	6,418	5,879	5,097	4,443
<b>Total per pupil revenues</b>	<b>\$ 9,870</b>	<b>\$ 9,594</b>	<b>\$ 9,121</b>	<b>\$ 9,592</b>

#### Select revenues from common sources

	District	Peer average	State average
Equalization formula funding	\$ 5,828	\$ 5,746	\$ 5,442
Amount from Prop 123	249	245	240
Prop 123 additional funding	53	48	47
Grants	536	830	866
Donations and tax credits	51	118	157

#### Select revenues from less common sources

	District	Peer average	Number of peers receiving
Desegregation	\$ 0	\$ 0	1 of 15
Small school adjustment	0	0	0 of 15
Federal impact aid	0	0	3 of 15
Voter-approved levy increases	1,941	1,917	13 of 15

<sup>1</sup> See Appendix A for information such as districts included in each peer group and Appendix B for sources and methodology.

**Instructional spending percentage**

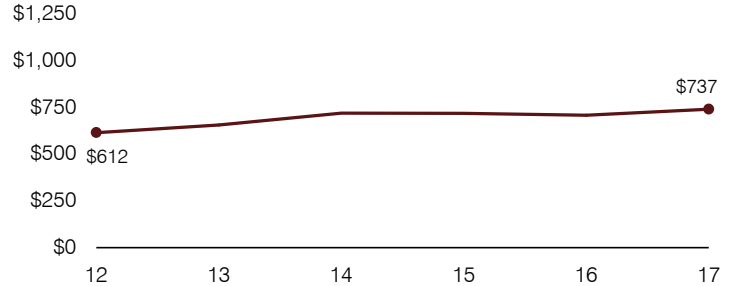
Year:	2001	2002	2003	2004	2005	2006	2007	2008	2009	2010	2011	2012	2013	2014	2015	2016	2017
Percentage:	48.3	51.2	52.1	54.2	52.1	51.7	55.6	55.5	56.8	53.8	53.5	53.3	51.9	52.0	53.0	52.9	54.2

**OPERATIONAL TRENDS AND FINANCIAL STRESS ASSESSMENT**  
Fiscal years as indicated

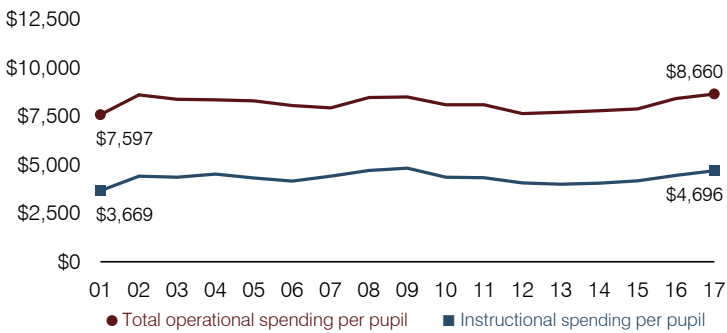
**5-year spending trend (2012 through 2017)**

Total operational spending per pupil, adjusted for inflation, increased by 13 percent. The percentage of dollars spent on instruction varied year to year, increasing slightly overall from 53.3 to 54.2 percent. Overall, as a percentage of total operational spending, plant operations decreased, while transportation and instruction support increased slightly. Other noninstructional areas remained fairly stable.

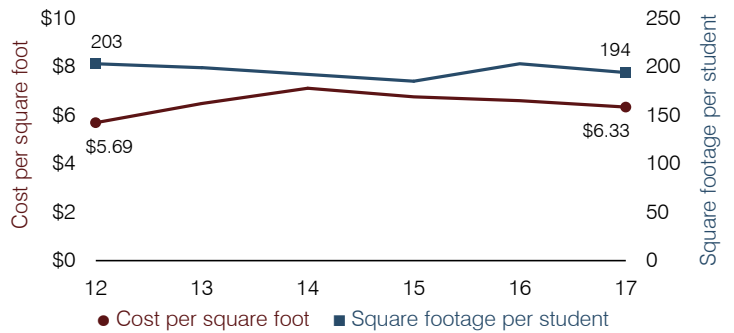
**Administrative cost per pupil**



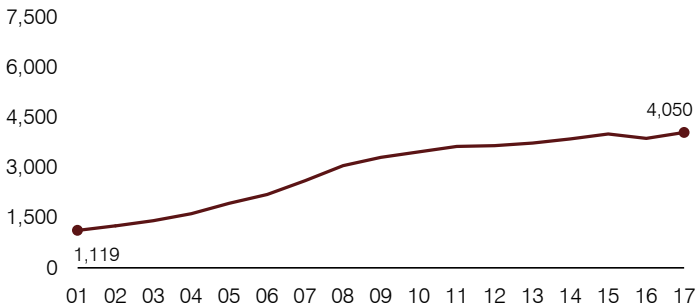
**Total operational and instructional spending per pupil (inflation adjusted to 2017 dollars)**



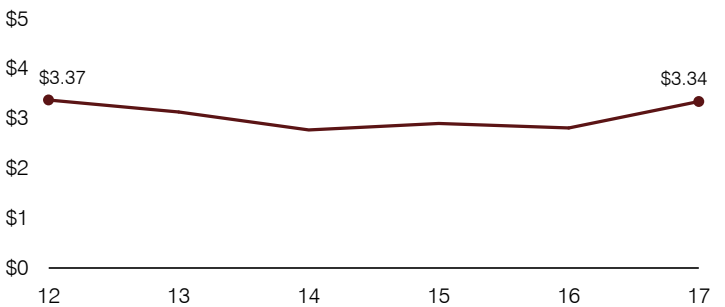
**Plant cost per square foot and square footage per student**



**Students attending**



**Food service cost per meal**



**Financial stress assessment**

Overall financial stress level: **Low**

Measure: 2015 through 2017

Assessment

Change in number of district students	Steady
Spending exceeded operating/capital budgets	No overspending
Spending increase election results	Voter-approved
Operating reserve percentage, Trend	2.0%, Decreasing
Years of capital reserve held	More than 3 years
Current financial and internal control status	Marginally compliant

**Low**      **Moderate**      **High**

**Transportation costs per mile and per rider**

