

Avondale Elementary School District

Maricopa County

Efficiency peer groups 8 and T-2, Achievement peer group 13

Legislative district(s): 4, 13, and 19

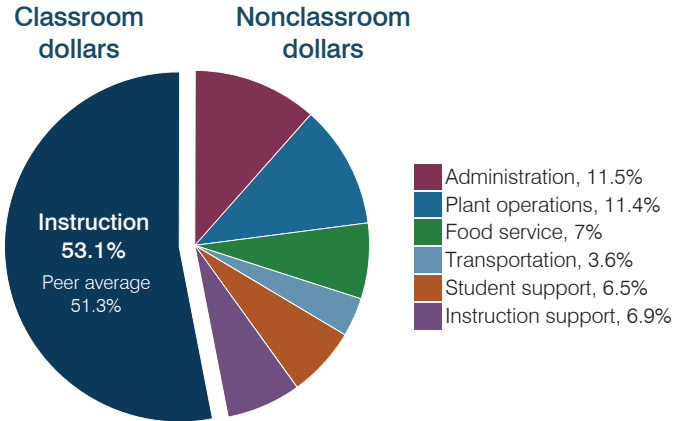
District size, location: Medium-large, Suburb

Students attending: 5,323

Number of schools: 8

OPERATIONAL EFFICIENCY

Spending by operational area



Efficiency measures relative to peer averages

Operational area	Measure	District	Peer average	State average
Administration	Cost per pupil	\$877	\$943	\$806
	Students per administrative position	60	71	67
Plant operations	Cost per square foot	\$6.13	\$6.27	\$6.10
	Square footage per student	143	141	154
Food service	Cost per meal	\$2.78	\$2.60	\$2.81
Transportation	Cost per mile	\$5.54	\$5.73	\$3.72
	Cost per rider	\$1,043	\$910	\$1,092

Very low Low Comparable High Very high

Per pupil spending

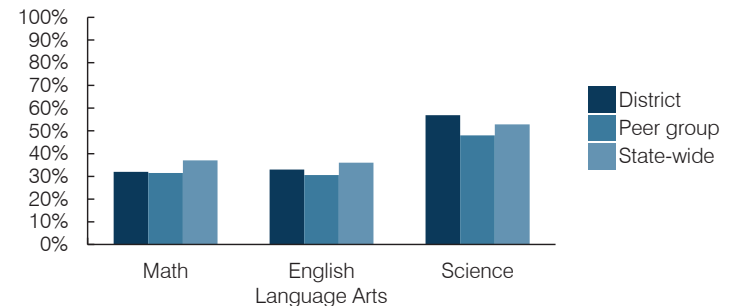
Spending by area	District		Peer average 2016	State average 2016
	2015	2016		
Instruction	\$ 3,530	\$ 4,057	\$ 3,896	\$ 4,145
Administration	737	877	943	806
Plant operations	872	875	866	939
Food service	504	538	598	415
Transportation	265	273	301	364
Student support	454	499	562	633
Instruction support	482	525	495	444
Total operational	\$ 6,844	\$ 7,644	\$ 7,661	\$ 7,746
Land and buildings	\$ 527	\$ 678	\$ 1,802	\$ 621
Equipment	531	367	577	400
Interest	227	243	250	216
Other	124	122	155	153
Total nonoperational	\$ 1,409	\$ 1,410	\$ 2,784	\$ 1,390
Total per pupil spending	\$ 8,253	\$ 9,054	\$ 10,445	\$ 9,136

STUDENT AND TEACHER MEASURES, FINANCIAL ASSESSMENT, AND REVENUES

Student and teacher measures

Measure	District	Peer average	State average
Attendance rate (2015)	94%	94%	94%
Graduation rate (2015)	N/A	N/A	N/A
Poverty rate (2015)	25%	26%	23%
Students per teacher	17.9	19.0	18.6
Average teacher salary	\$41,976	\$40,596	\$46,384
Amount from Proposition 301	\$2,709	\$4,805	\$5,315
Average years of teacher experience	5.1	7.6	11.0
Percentage of teachers in first 3 years	48%	39%	20%

Students who passed state assessments



Financial stress assessment

Overall financial stress level: **Low**

Measure: 2014 through 2016

Measure	Assessment
Change in number of district students	Steady
Spending exceeded operating/capital budgets	No overspending
Spending increase election results	Voter-approved
Operating reserve percentage, Trend	4.5%, Increasing
Years of capital reserve held	More than 3 years
Current financial and internal control status	Compliant

Low Moderate High

Per pupil revenues

Revenues by source	District		Peer average 2016	State average 2016
	2015	2016		
Federal	\$ 1,341	\$ 1,196	\$ 1,781	\$ 1,301
State	3,695	4,118	3,849	3,780
Local	3,832	4,274	4,470	4,268
Total revenues per pupil	\$ 8,868	\$ 9,588	\$ 10,100	\$ 9,349

Select revenues from common sources

Source	District 2016	Peer average 2016	State average 2016
Equalization formula funding	\$ 4,840	\$ 5,101	\$ 5,085
Grants	1,346	1,238	1,865
Donations and tax credits	19	22	46

Select revenues from less common sources

Source	District 2016	Peer average 2016	Number of peers receiving
Desegregation	\$ 0	\$ 0	4 of 19
Small school adjustment	0	0	0 of 19
Federal impact aid	0	0	0 of 19
Voter-approved levy increases	1,816	1,853	19 of 19

Avondale ESD—page 2

Classroom dollar percentage

Year:	2001	2002	2003	2004	2005	2006	2007	2008	2009	2010	2011	2012	2013	2014	2015	2016
Percentage:	60.1	62.4	64.8	64.1	63.9	61.1	60.3	59.7	58.6	56.3	55.2	52.2	50.7	52.6	51.6	53.1

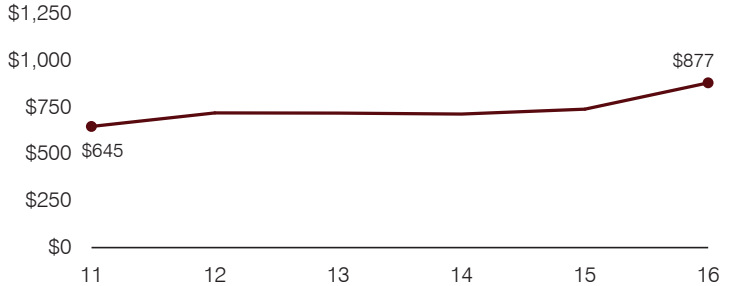
OPERATIONAL TRENDS

Fiscal years as indicated

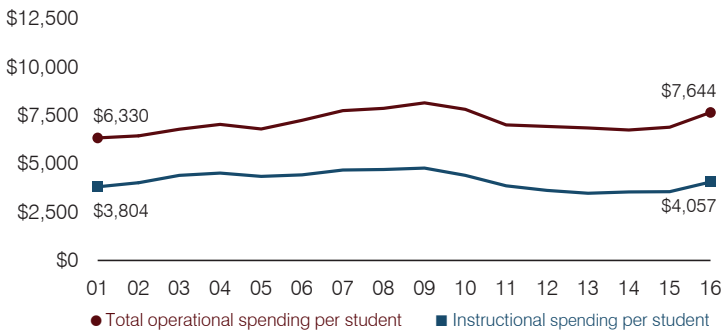
5-year spending trend (2011 through 2016)

Total operational spending per pupil, adjusted for inflation, increased by 9 percent. The percentage of dollars spent in the classroom varied year to year, decreasing overall from 55.2 to 53.1 percent. Overall, as a percentage of total operational spending, administration and instruction support increased and transportation increased slightly, while food service and student support decreased slightly.

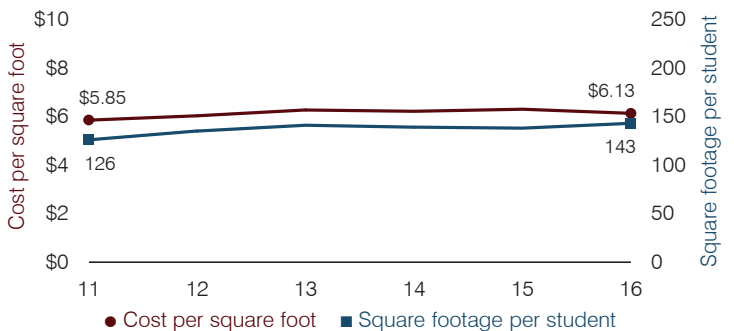
Administrative cost per pupil



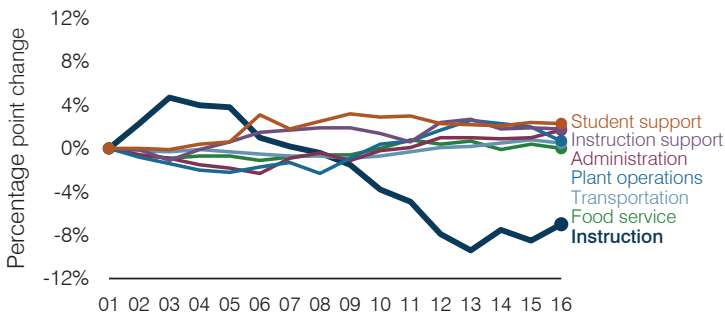
Total operational and instructional spending per pupil (inflation adjusted to 2016 dollars)



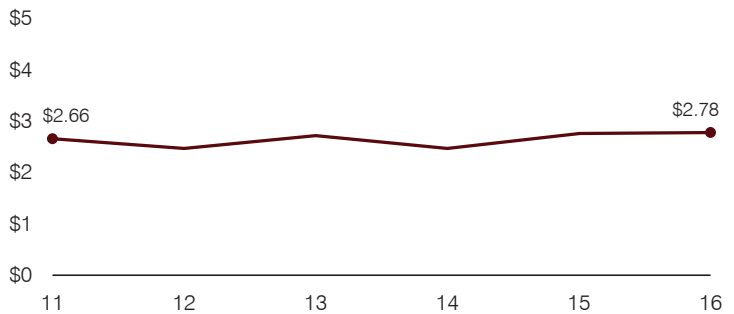
Plant cost per square foot and square footage per student



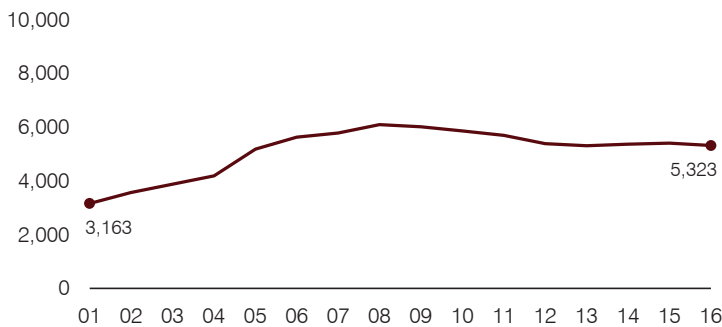
Changes in operational spending percentages



Food service cost per meal



Students attending



Transportation costs per mile and per rider

