

# Avondale Elementary School District

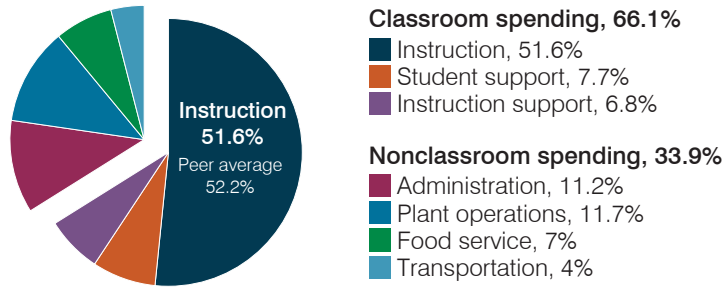
Maricopa County  
 Peer groups: Operational 8 and T-2, Achievement 13<sup>1</sup>  
 Legislative district(s): 4, 13, and 19  
 District location: Suburb  
 Number of schools: 8  
 Graduation rate (2018): N/A

Students attending; Size: 5,384; Medium-large  
 5-year change in students attending: Less than 1%  
 Special education population: 13%  
 English learner population: 10%  
 Poverty rate (2018): 20%  
 Free/reduced meal eligibility: 66%

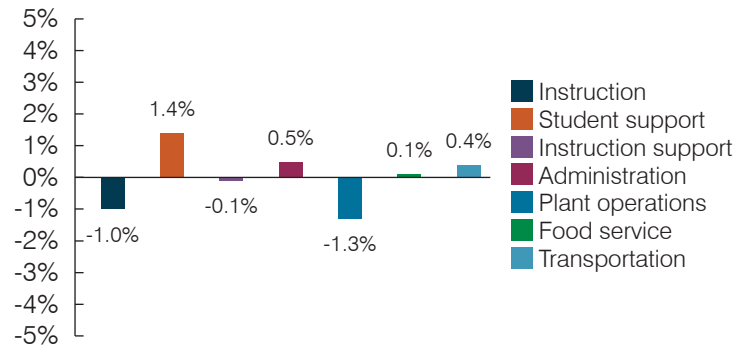
## Instructional spending percentage by year

2001	2002	2003	2004	2005	2006	2007	2008	2009	2010	2011	2012	2013	2014	2015	2016	2017	2018	2019
60.1	62.4	64.8	64.1	63.9	61.1	60.3	59.7	58.6	56.3	55.2	52.2	50.7	52.6	51.6	53.1	50.9	50.5	51.6

## Spending by operational area



## Percentage point change in spending by operational area (fiscal year 2014 versus 2019)

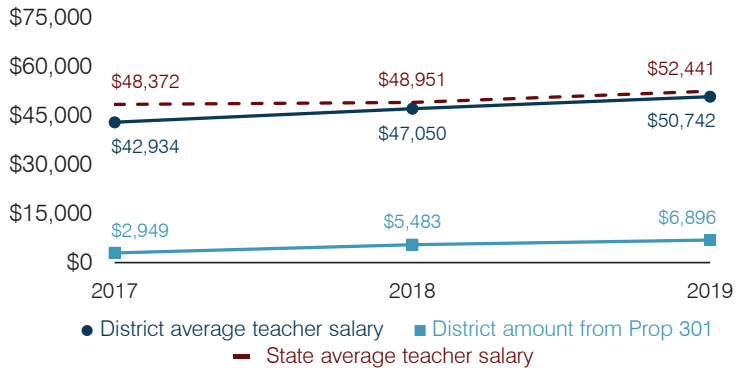


## Operational measures relative to peer averages

Operational area	Measure	District	Peer average	State average
Administration	Cost per pupil	\$955	\$1,047	\$903
	Students per administrative position	62	65	66
Plant operations	Cost per square foot	\$7.05	\$6.60	\$6.49
	Square footage per student	141	145	158
Food service	Cost per meal	\$2.88	\$2.91	\$3.08
Transportation	Cost per mile	\$6.47	\$6.82	\$4.29
	Cost per rider	\$1,349	\$1,386	\$1,424



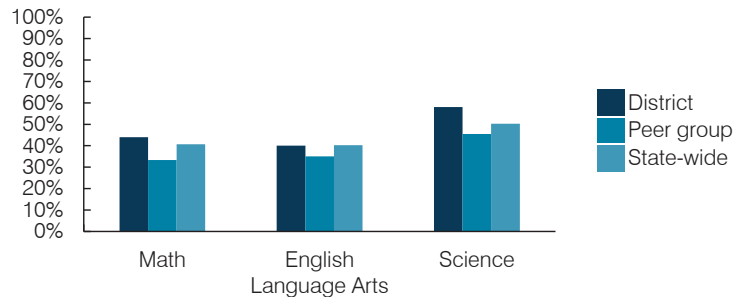
## Average teacher salary and other measures



## Per pupil spending

Spending by area	District		Peer average 2019	State average 2019
	2018	2019		
Instruction	\$ 3,958	\$ 4,383	\$ 4,648	\$ 4,869
Student support	578	650	678	754
Instruction support	508	579	551	497
Administration	963	955	1,047	903
Plant operations	960	996	972	1,027
Food service	544	591	672	438
Transportation	319	340	345	417
<b>Total operational</b>	<b>7,830</b>	<b>8,494</b>	<b>8,913</b>	<b>8,905</b>
Land and buildings	322	385	1,393	1,086
Equipment	392	499	556	496
Interest	205	252	344	261
Other	150	200	203	180
<b>Total nonoperational</b>	<b>1,069</b>	<b>1,336</b>	<b>2,496</b>	<b>2,023</b>
<b>Total per pupil spending</b>	<b>\$ 8,899</b>	<b>\$ 9,830</b>	<b>\$11,409</b>	<b>\$10,928</b>

## Students who passed State assessments<sup>2</sup>



<sup>1</sup> See Appendix A for information, such as districts included in each peer group, and Appendix B for sources and methodology.  
<sup>2</sup> School letter grades are available at <https://azreportcards.azed.gov>.