

# Ash Fork Joint Unified School District

Yavapai County

Efficiency peer groups 6 and T-10, Achievement peer group 6<sup>1</sup>

Legislative district(s): 1

District size, location:

Small, Rural

Students attending:

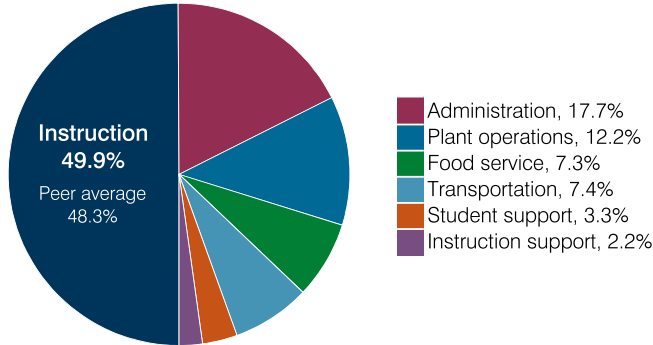
243

Number of schools:

1

## OPERATIONAL EFFICIENCY

### Spending by operational area



### Efficiency measures relative to peer averages

Operational area	Measure	District	Peer average	State average
Administration	Cost per pupil	\$2,123	\$1,744	\$860
	Students per administrative position	81	43	66
Plant operations	Cost per square foot	\$6.69	\$5.27	\$6.34
	Square footage per student	219	321	156
Food service	Cost per meal	\$5.16	\$3.96	\$3.02
Transportation	Cost per mile	\$1.47	\$1.95	\$4.05
	Cost per rider	\$1,599	\$1,572	\$1,301

Very low   Low   Comparable   High   Very high

### Per pupil spending

Spending by area	District		Peer average 2018	State average 2018
	2017	2018		
Instruction	\$ 5,335	\$ 5,978	\$ 5,556	\$ 4,480
Administration	2,274	2,123	1,744	860
Plant operations	1,193	1,464	1,706	988
Food service	750	878	546	425
Transportation	532	887	592	388
Student support	433	398	672	693
Instruction support	302	260	393	462
<b>Total operational</b>	<b>10,819</b>	<b>11,988</b>	<b>11,209</b>	<b>8,296</b>
Land and buildings	77	689	1,077	827
Equipment	145	489	601	409
Interest	52	0	162	228
Other	51	19	60	169
<b>Total nonoperational</b>	<b>325</b>	<b>1,197</b>	<b>1,900</b>	<b>1,633</b>
<b>Total per pupil spending</b>	<b>\$ 11,144</b>	<b>\$ 13,185</b>	<b>\$ 13,109</b>	<b>\$ 9,929</b>

<sup>1</sup> See Appendix A for information such as districts included in each peer group and Appendix B for sources and methodology.

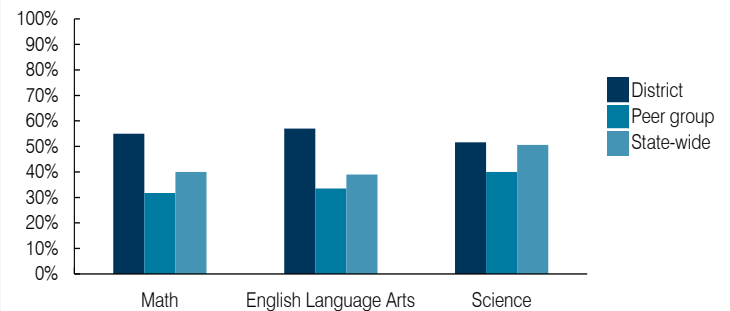
## STUDENT ACHIEVEMENT, STUDENT AND TEACHER MEASURES, AND REVENUES

### ADE-assigned school letter grades

Grade	Number of schools <sup>2</sup>	Percentage of schools
A	2	67%
B	1	33%
C	0	0%
D	0	0%
F	0	0%

<sup>2</sup> Includes schools that share a campus.

### Students who passed State assessments



### Student and teacher measures

Measure	District	Peer average	State average
Attendance rate	97%	93%	94%
Graduation rate (2017)	89%	85%	78%
Poverty rate (2017)	26%	29%	19%
Special education population	17%	14%	12%
Students per teacher	20.3	16.2	18.4
Average teacher salary	\$59,068	\$46,264	\$48,951
Amount from Prop 301	\$7,425	\$6,122	\$6,411
Average years of teacher experience	14.5	12.2	11.4
Percentage of teachers in first 3 years	0%	20%	19%

### Per pupil revenues

Revenues by source	District		Peer average 2018	State average 2018
	2017	2018		
Federal	\$ 1,255	\$ 1,123	\$ 2,405	\$ 1,317
State	2,460	2,696	4,080	4,011
Local	9,501	11,793	8,027	4,592
<b>Total per pupil revenues</b>	<b>\$ 13,216</b>	<b>\$ 15,612</b>	<b>\$ 14,512</b>	<b>\$ 9,920</b>

### Select revenues from common sources

Source	District	Peer average	State average
Equalization formula funding	\$ 7,230	\$ 7,286	\$ 7,175
Grants	1,258	1,142	2,252
Donations and tax credits	43	69	337

### Select revenues from less common sources

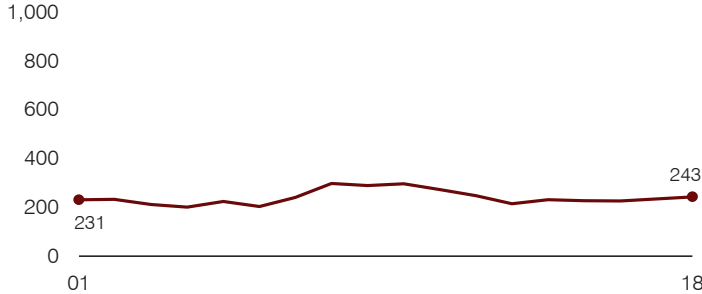
Source	District	Peer average	Number of peers receiving
Desegregation	\$ 0	\$ 0	0 of 18
Small school adjustment	6,981	5,060	5 of 18
Federal impact aid	0	0	3 of 18
Voter-approved levy increases	0	0	14 of 18

**Instructional spending percentage**

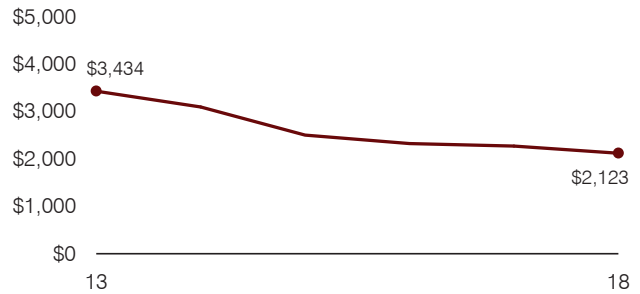
Year: 2001 2002 2003 2004 2005 2006 2007 2008 2009 2010 2011 2012 2013 2014 2015 2016 2017 2018  
 Percentage: 53.1 55.4 60.8 55.6 58.9 47.0 53.2 52.8 54.8 53.1 47.1 47.4 42.1 43.3 47.4 49.0 49.3 49.9

**TRENDS AND FINANCIAL STRESS ASSESSMENT**  
 Fiscal years as indicated

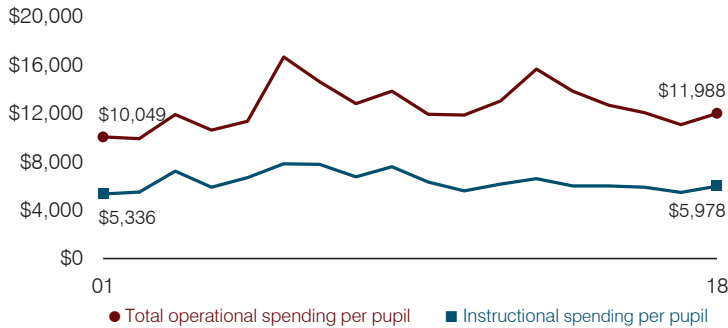
**Students attending**



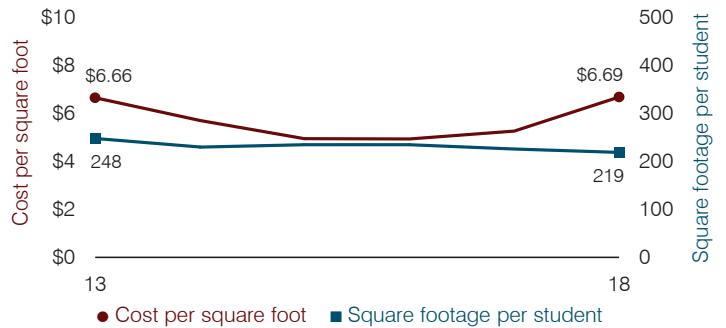
**Administrative cost per pupil**



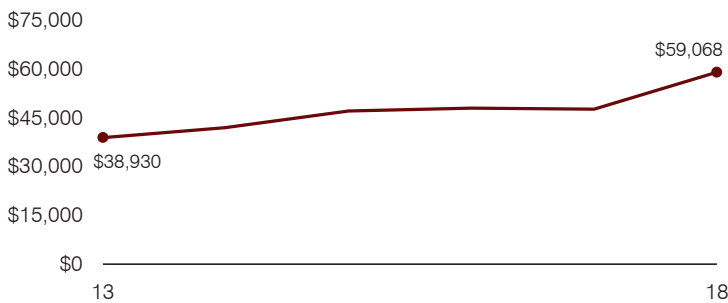
**Total operational and instructional spending per pupil (inflation adjusted to 2018 dollars)**



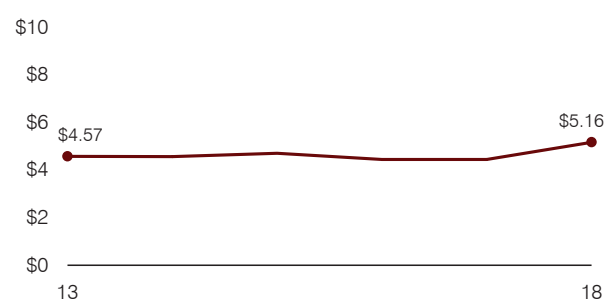
**Plant cost per square foot and square footage per student**



**Average teacher salary**



**Food service cost per meal**



**Financial stress assessment**

Overall financial stress level: **Low**

Measure: 2016 through 2018	Assessment
Change in number of district students	Small school adjustment
Spending exceeded operating/capital budgets	No overspending
Spending increase election results	No election held
Operating reserve percentage, Trend	43.1%, Increasing
Years of capital reserve held	More than 3 years
Current financial and internal control status	Compliant

Low
Moderate
High

**Transportation costs per mile and per rider**

