

# Arlington Elementary School District

Maricopa County

Efficiency peer groups 10 and T-9, Achievement peer group 17<sup>1</sup>

Legislative district(s): 4 and 13

District size, location:

Small, Rural

Students attending:

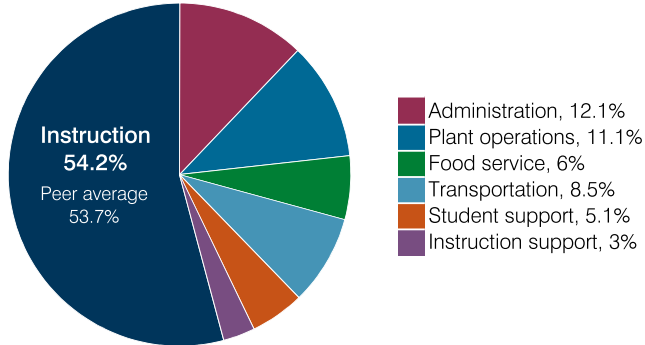
243

Number of schools:

1

## OPERATIONAL EFFICIENCY

### Spending by operational area



### Efficiency measures relative to peer averages

Operational area	Measure	District	Peer average	State average
Administration	Cost per pupil	\$1,257	\$1,194	\$860
	Students per administrative position	79	60	66
Plant operations	Cost per square foot	\$7.64	\$6.78	\$6.34
	Square footage per student	150	176	156
Food service	Cost per meal	\$3.58	\$3.40	\$3.02
Transportation	Cost per mile	\$2.57	\$2.62	\$4.05
	Cost per rider	\$1,262	\$1,457	\$1,301

Very low
Low
Comparable
High
Very high

### Per pupil spending

Spending by area	District		Peer average 2018	State average 2018
	2017	2018		
Instruction	\$ 5,650	\$ 5,616	\$ 5,096	\$ 4,480
Administration	1,076	1,257	1,194	860
Plant operations	1,399	1,149	1,071	988
Food service	584	620	535	425
Transportation	894	886	586	388
Student support	643	525	498	693
Instruction support	196	315	379	462
<b>Total operational</b>	<b>10,442</b>	<b>10,368</b>	<b>9,359</b>	<b>8,296</b>
Land and buildings	311	212	208	827
Equipment	221	161	260	409
Interest	219	196	143	228
Other	575	1,138	173	169
<b>Total nonoperational</b>	<b>1,326</b>	<b>1,707</b>	<b>784</b>	<b>1,633</b>
<b>Total per pupil spending</b>	<b>\$ 11,768</b>	<b>\$ 12,075</b>	<b>\$ 10,143</b>	<b>\$ 9,929</b>

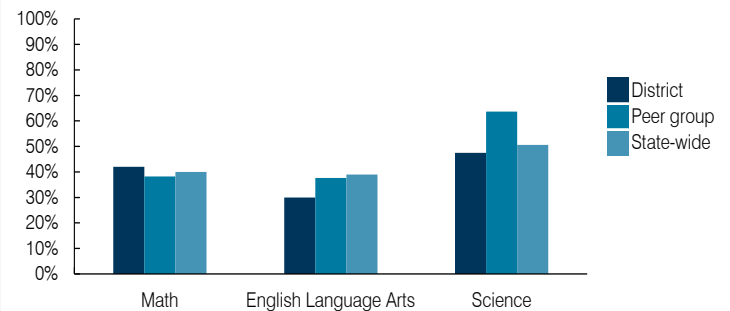
<sup>1</sup> See Appendix A for information such as districts included in each peer group and Appendix B for sources and methodology.

## STUDENT ACHIEVEMENT, STUDENT AND TEACHER MEASURES, AND REVENUES

### ADE-assigned school letter grades

Grade	Number of schools	Percentage of schools
A	0	0%
B	0	0%
C	1	100%
D	0	0%
F	0	0%

### Students who passed State assessments



### Student and teacher measures

Measure	District	Peer average	State average
Attendance rate	94%	94%	94%
Graduation rate (2017)	N/A	N/A	N/A
Poverty rate (2017)	22%	19%	19%
Special education population	8%	13%	12%
Students per teacher	18.7	14.1	18.4
Average teacher salary	\$57,479	\$50,510	\$48,951
Amount from Prop 301	\$9,202	\$5,096	\$6,411
Average years of teacher experience	15.5	13.8	11.4
Percentage of teachers in first 3 years	0%	9%	19%

### Per pupil revenues

Revenues by source	District		Peer average 2018	State average 2018
	2017	2018		
Federal	\$ 1,545	\$ 1,716	\$ 2,311	\$ 1,317
State	522	635	4,860	4,011
Local	9,473	10,859	4,359	4,592
<b>Total per pupil revenues</b>	<b>\$ 11,540</b>	<b>\$ 13,210</b>	<b>\$ 11,530</b>	<b>\$ 9,920</b>

#### Select revenues from common sources

Equalization formula funding	\$ 6,747	\$ 7,454	\$ 6,817	\$ 5,585
Grants	1,637	1,715	1,722	1,241
Donations and tax credits	121	99	226	90

#### Select revenues from less common sources

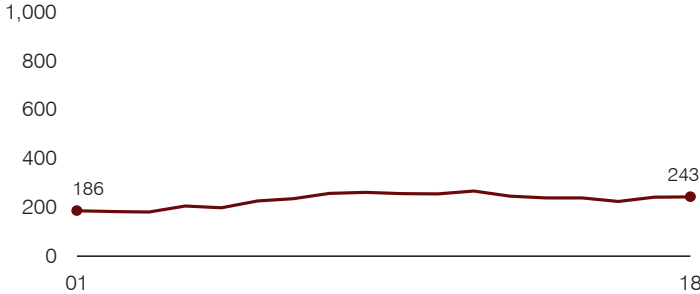
			Number of peers receiving
Desegregation	\$ 0	\$ 0	0 of 11
Small school adjustment	0	0	0 of 11
Federal impact aid	0	0	3 of 11
Voter-approved levy increases	2,066	2,173	6 of 11

**Instructional spending percentage**

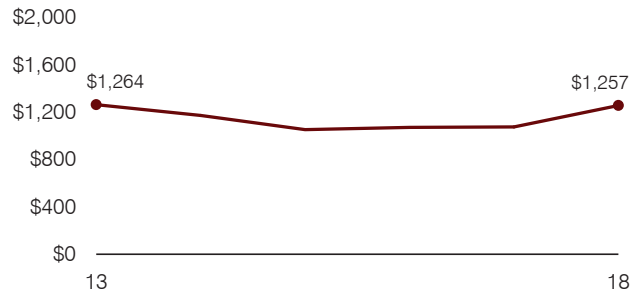
Year: 2001 2002 2003 2004 2005 2006 2007 2008 2009 2010 2011 2012 2013 2014 2015 2016 2017 2018  
 Percentage: 52.4 52.9 56.5 55.1 54.2 54.3 57.4 57.2 56.6 56.4 52.7 49.6 50.3 51.6 53.4 53.3 54.1 54.2

**TRENDS AND FINANCIAL STRESS ASSESSMENT**  
 Fiscal years as indicated

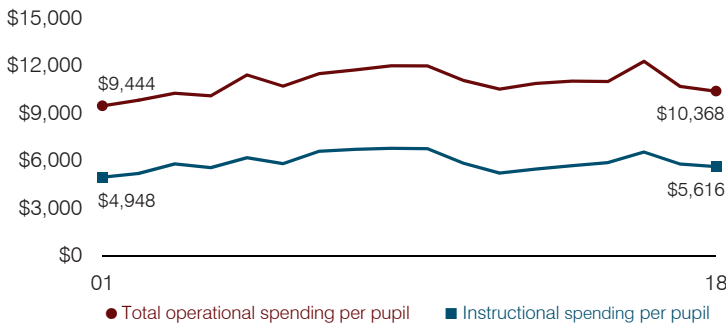
**Students attending**



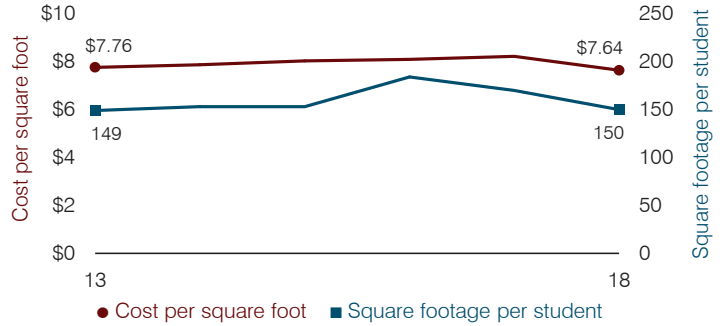
**Administrative cost per pupil**



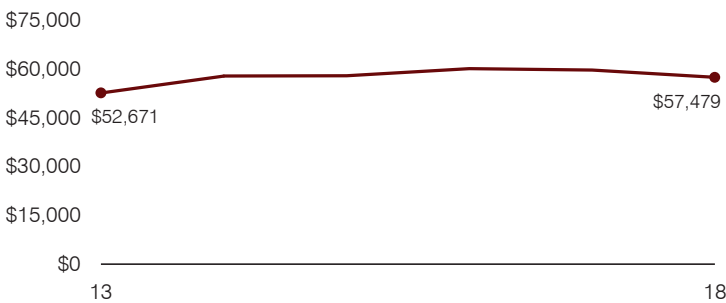
**Total operational and instructional spending per pupil (inflation adjusted to 2018 dollars)**



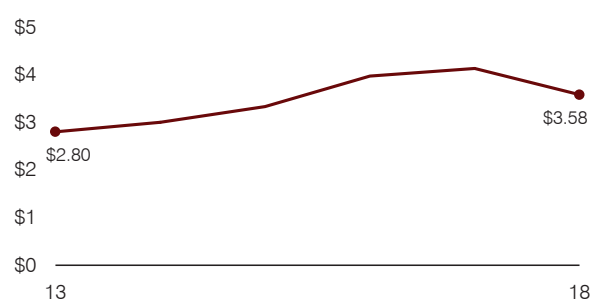
**Plant cost per square foot and square footage per student**



**Average teacher salary**



**Food service cost per meal**



**Financial stress assessment**

Overall financial stress level: **Low**

Measure: 2016 through 2018	Assessment
Change in number of district students	Increase
Spending exceeded operating/capital budgets	No overspending
Spending increase election results	Voter-approved
Operating reserve percentage, Trend	1.6%, Decreasing
Years of capital reserve held	More than 3 years
Current financial and internal control status	Compliant

Low Moderate High

**Transportation costs per mile and per rider**

