

Aguila Elementary School District

Maricopa County

Efficiency peer groups 11 and T-11, Achievement peer group 19¹

Legislative district(s): 13

District size, location:

Very small, Rural

Students attending:

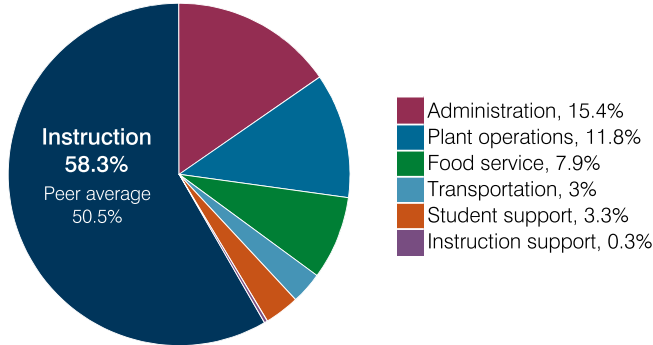
144

Number of schools:

1

OPERATIONAL EFFICIENCY

Spending by operational area



Efficiency measures relative to peer averages

Operational area	Measure	District	Peer average	State average
Administration	Cost per pupil	\$1,574	\$3,064	\$860
	Students per administrative position	38	33	66
Plant operations	Cost per square foot	\$5.50	\$7.31	\$6.34
	Square footage per student	220	371	156
Food service	Cost per meal	\$4.02	\$5.79	\$3.02
Transportation	Cost per mile	\$0.86	\$1.94	\$4.05
	Cost per rider	\$623	\$1,614	\$1,301

Per pupil spending

Spending by area	District		Peer average 2018	State average 2018
	2017	2018		
Instruction	\$ 5,603	\$ 5,958	\$ 8,493	\$ 4,480
Administration	1,375	1,574	3,064	860
Plant operations	1,280	1,210	2,439	988
Food service	748	805	932	425
Transportation	256	311	973	388
Student support	381	334	656	693
Instruction support	18	29	400	462
Total operational	9,661	10,221	16,957	8,296
Land and buildings	0	5	965	827
Equipment	210	200	562	409
Interest	14	20	25	228
Other	756	748	88	169
Total nonoperational	980	973	1,640	1,633
Total per pupil spending	\$ 10,641	\$ 11,194	\$ 18,597	\$ 9,929

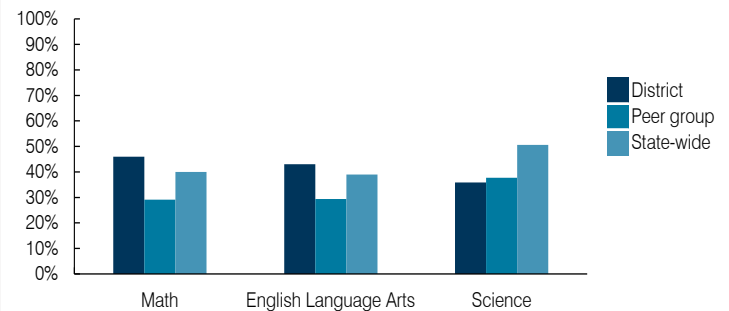
¹ See Appendix A for information such as districts included in each peer group and Appendix B for sources and methodology.

STUDENT ACHIEVEMENT, STUDENT AND TEACHER MEASURES, AND REVENUES

ADE-assigned school letter grades

Grade	Number of schools	Percentage of schools
A	0	0%
B	1	100%
C	0	0%
D	0	0%
F	0	0%

Students who passed State assessments



Student and teacher measures

Measure	District	Peer average	State average
Attendance rate	95%	93%	94%
Graduation rate (2017)	N/A	N/A	N/A
Poverty rate (2017)	33%	32%	19%
Special education population	14%	14%	12%
Students per teacher	14.4	15.6	18.4
Average teacher salary	\$51,617	\$49,189	\$48,951
Amount from Prop 301	\$4,049	\$4,810	\$6,411
Average years of teacher experience	12.8	11.6	11.4
Percentage of teachers in first 3 years	0%	11%	19%

Per pupil revenues

Revenues by source	District		Peer average 2018	State average 2018
	2017	2018		
Federal	\$ 1,945	\$ 1,880	\$ 3,021	\$ 1,317
State	6,036	6,486	4,788	4,011
Local	3,115	2,969	12,812	4,592
Total per pupil revenues	\$ 11,096	\$ 11,335	\$ 20,621	\$ 9,920

Select revenues from common sources

Source	District	Peer average	State average
Equalization formula funding	\$ 6,368	\$ 6,612	\$ 8,282
Grants	3,081	2,774	3,020
Donations and tax credits	92	108	125

Select revenues from less common sources

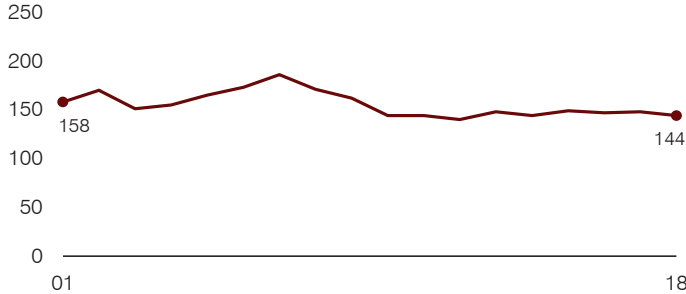
Source	District	Peer average	State average
Desegregation	\$ 0	\$ 0	0 of 56
Small school adjustment	0	0	45 of 56
Federal impact aid	0	0	5 of 56
Voter-approved levy increases	0	0	5 of 56

Instructional spending percentage

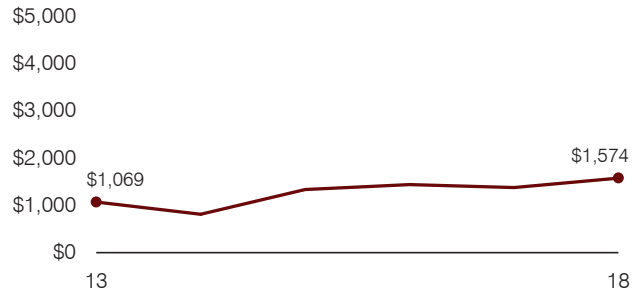
Year: 2001 2002 2003 2004 2005 2006 2007 2008 2009 2010 2011 2012 2013 2014 2015 2016 2017 2018
 Percentage: 59.9 61.4 62.6 59.9 55.1 51.6 57.9 57.4 62.1 63.8 64.5 58.5 63.1 65.4 55.6 54.8 58.0 58.3

TRENDS AND FINANCIAL STRESS ASSESSMENT
 Fiscal years as indicated

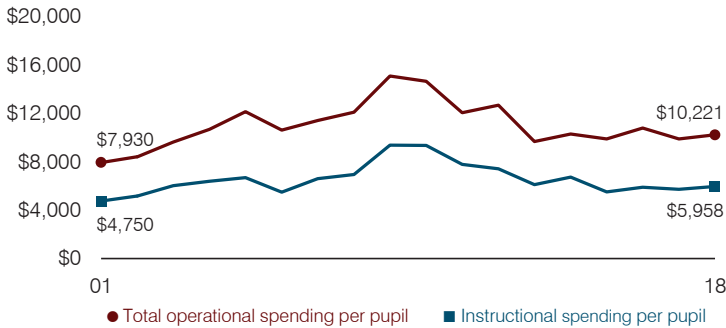
Students attending



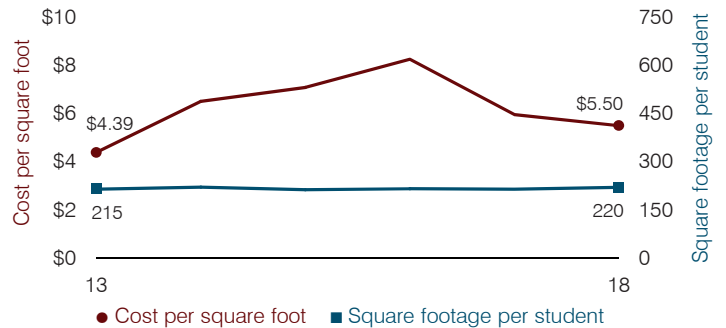
Administrative cost per pupil



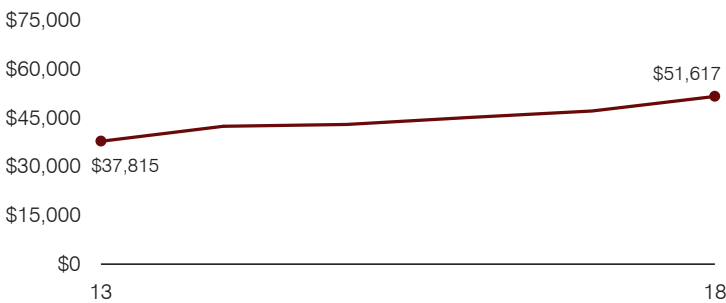
Total operational and instructional spending per pupil (inflation adjusted to 2018 dollars)



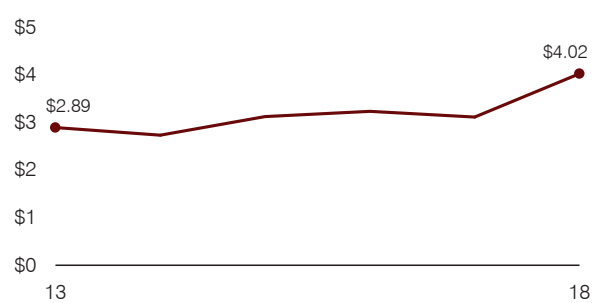
Plant cost per square foot and square footage per student



Average teacher salary



Food service cost per meal



Financial stress assessment

Overall financial stress level: **High**

Measure: 2016 through 2018	Assessment
Change in number of district students	Steady
Spending exceeded operating/capital budgets	Operating and capital
Spending increase election results	No election held
Operating reserve percentage, Trend	0.0%, Steady
Years of capital reserve held	Less than 1 year
Current financial and internal control status	Marginally compliant

Low
Moderate
High

Transportation costs per mile and per rider

