

# Peoria Unified School District

Maricopa County

Efficiency peer groups 1 and T-5, Achievement peer group 2

Legislative district(s): 20, 21, 22, and 29

District size, location:

Very large, Suburb

Students attending:

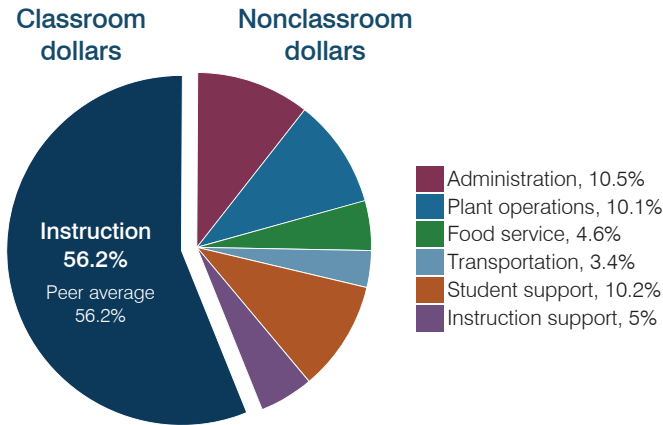
35,400

Number of schools:

41

## OPERATIONAL EFFICIENCY

### Spending by operational area



### Efficiency measures relative to peer averages

Operational area	Measure	District	Peer average	State average
Administration	Cost per pupil	\$731	\$673	\$806
	Students per administrative position	91	80	67
Plant operations	Cost per square foot	\$5.27	\$5.86	\$6.10
	Square footage per student	133	147	154
Food service	Cost per meal	\$3.00	\$2.73	\$2.81
Transportation	Cost per mile	\$3.53	\$3.76	\$3.72
	Cost per rider	\$1,270	\$1,462	\$1,092

Very low   Low   Comparable   High   Very high

### Per pupil spending

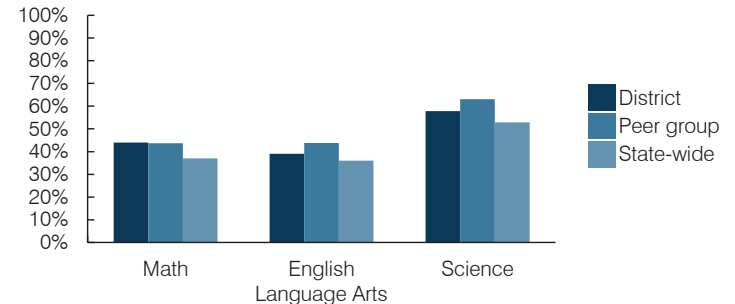
Spending by area	District		Peer average 2016	State average 2016
	2015	2016		
Instruction	\$ 3,685	\$ 3,904	\$ 4,121	\$ 4,145
Administration	702	731	673	806
Plant operations	761	701	859	939
Food service	325	317	329	415
Transportation	239	237	341	364
Student support	660	708	639	633
Instruction support	343	347	369	444
<b>Total operational</b>	<b>\$ 6,715</b>	<b>\$ 6,945</b>	<b>\$ 7,331</b>	<b>\$ 7,746</b>
Land and buildings	\$ 605	\$ 721	\$ 396	\$ 621
Equipment	305	356	369	400
Interest	278	274	247	216
Other	122	182	194	153
<b>Total nonoperational</b>	<b>\$ 1,310</b>	<b>\$ 1,533</b>	<b>\$ 1,206</b>	<b>\$ 1,390</b>
<b>Total per pupil spending</b>	<b>\$ 8,025</b>	<b>\$ 8,478</b>	<b>\$ 8,537</b>	<b>\$ 9,136</b>

## STUDENT AND TEACHER MEASURES, FINANCIAL ASSESSMENT, AND REVENUES

### Student and teacher measures

Measure	District	Peer average	State average
Attendance rate (2015)	95%	94%	94%
Graduation rate (2015)	93%	90%	78%
Poverty rate (2015)	14%	14%	23%
Students per teacher	17.3	18.6	18.6
Average teacher salary	\$41,337	\$44,519	\$46,384
Amount from Proposition 301	\$6,092	\$5,402	\$5,315
Average years of teacher experience	10.9	10.8	11.0
Percentage of teachers in first 3 years	17%	21%	20%

### Students who passed state assessments



### Financial stress assessment

Overall financial stress level: **Moderate**

Measure: 2014 through 2016

Measure	Assessment
Change in number of district students	Steady
Spending exceeded operating/capital budgets	No overspending
Spending increase election results	Mixed election results
Operating reserve percentage, Trend	2.3%, Increasing
Years of capital reserve held	1 to 3 years
Current financial and internal control status	Compliant

Low	Moderate	High
-----	----------	------

### Per pupil revenues

Revenues by source	District		Peer average 2016	State average 2016
	2015	2016		
Federal	\$ 797	\$ 652	\$ 838	\$ 1,301
State	3,664	3,909	3,389	3,780
Local	3,435	3,787	5,025	4,268
<b>Total revenues per pupil</b>	<b>\$ 7,896</b>	<b>\$ 8,348</b>	<b>\$ 9,252</b>	<b>\$ 9,349</b>

### Select revenues from common sources

Source	District	Peer average	State average
Equalization formula funding	\$ 4,996	\$ 5,153	\$ 5,384
Grants	836	692	854
Donations and tax credits	65	90	94

### Select revenues from less common sources

Source	District	Peer average	State average
Desegregation	\$ 0	\$ 0	4 of 10
Small school adjustment	0	0	0 of 10
Federal impact aid	0	0	2 of 10
Voter-approved levy increases	1,179	1,192	10 of 10

**Classroom dollar percentage**

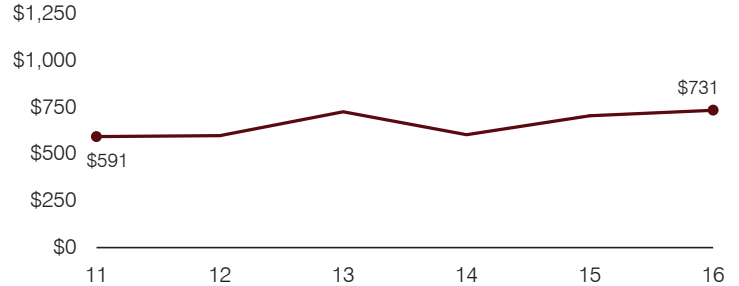
Year:	2001	2002	2003	2004	2005	2006	2007	2008	2009	2010	2011	2012	2013	2014	2015	2016
Percentage:	61.9	61.5	61.4	61.5	60.0	60.6	59.6	59.8	60.5	59.6	57.2	57.6	56.0	57.9	54.9	56.2

**OPERATIONAL TRENDS**  
Fiscal years as indicated

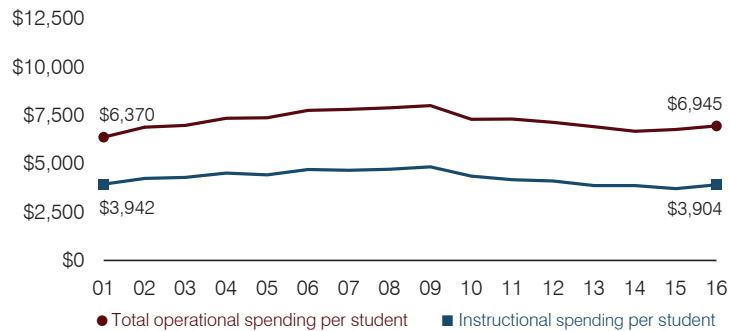
**5-year spending trend (2011 through 2016)**

Total operational spending per pupil, adjusted for inflation, decreased by 5 percent. The percentage of dollars spent in the classroom varied year to year, decreasing overall from 57.2 to 56.2 percent. Overall, as a percentage of total operational spending, administration increased and student support increased slightly, while plant operations decreased and instruction support decreased slightly.

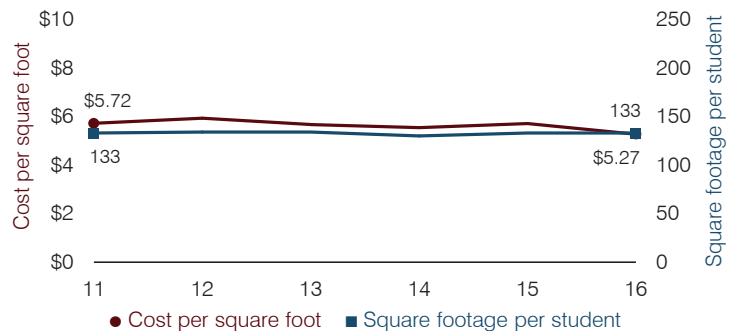
**Administrative cost per pupil**



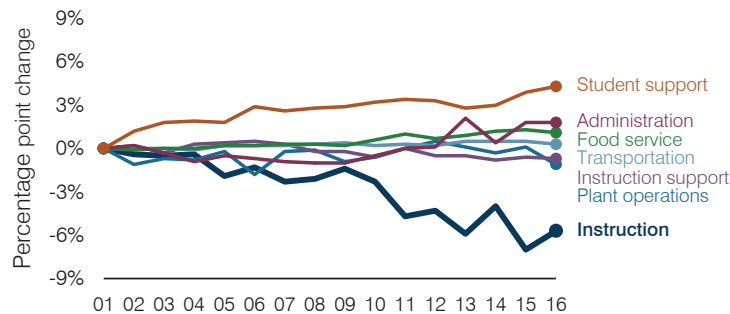
**Total operational and instructional spending per pupil (inflation adjusted to 2016 dollars)**



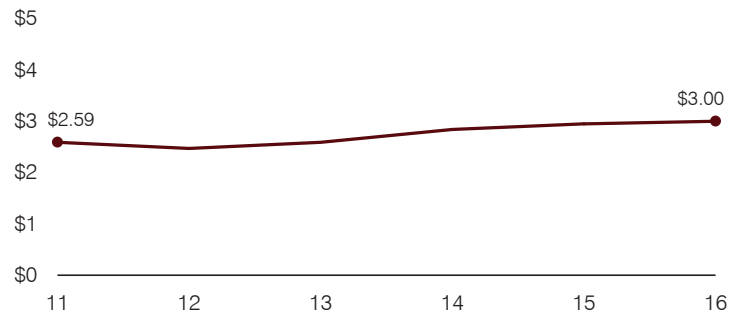
**Plant cost per square foot and square footage per student**



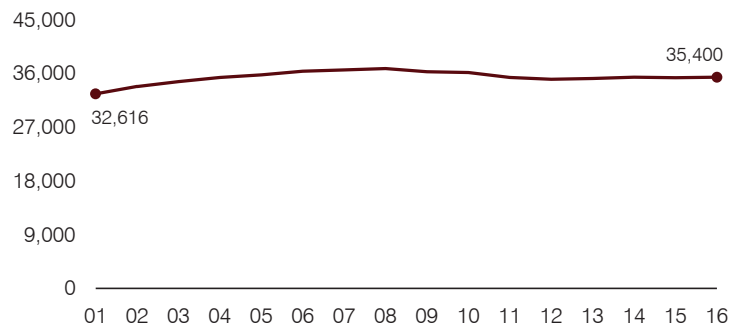
**Changes in operational spending percentages**



**Food service cost per meal**



**Students attending**



**Transportation costs per mile and per rider**

