

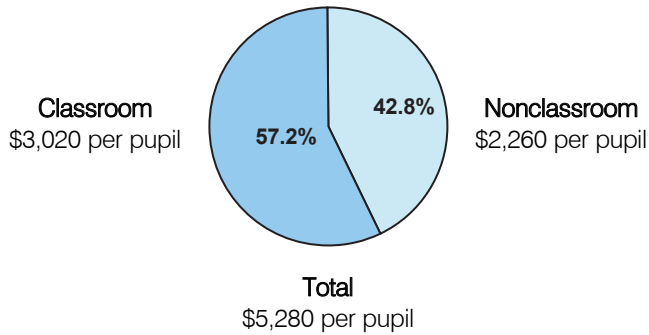
Classroom Dollars and Proposition 301 Results

Mohave Valley Elementary School District

District size: Medium
 Students attending: 1,680
 Number of schools: 4
 Number of certified teachers: 77

Classroom Dollars

Fiscal year 2004

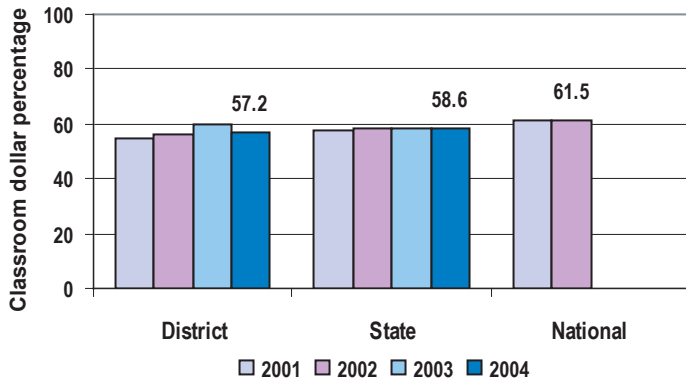


Comparative Information

	District			State
	2002	2003	2004	2004
Student/teacher ratio	19.7	21.6	21.8	18.2
Average teacher salary	\$34,610	\$34,355	\$34,855	\$38,534
Average years' experience	7.8	8.1	7.9	8.7

Classroom dollar ranking: 89 of 227 districts.

4-year comparison



Expenditures by function

	District				State	National
	2001	2002	2003	2004	2004	2001
Classroom dollars	54.8	55.9	59.5	57.2	58.6	61.5
Nonclassroom dollars:						
Administration	11.6	11.9	10.4	10.9	9.5	10.9
Plant operations	11.4	9.9	11.5	11.5	11.7	9.7
Food service	6.3	7.1	5.6	5.9	4.7	4.0
Transportation	8.3	7.3	5.9	5.3	4.0	4.1
Student support	3.5	3.7	3.3	3.9	7.0	5.0
Instruction support	4.1	4.2	3.8	5.3	4.3	4.6
Other					0.2	0.2

Proposition 301

District-reported 2004 results

Teacher pay

- On average, each teacher, speech pathologist, and instructional facilitator earned between \$5,514 and \$6,000 in additional salary.

Performance

- The District accomplished its goal, which was based on individual performance.
- 85 percent of teachers earned monies tied to the percentage of their students demonstrating 1 year's academic progress and to teacher evaluations.

Menu

- Monies were used solely to increase eligible employee compensation.