

# Colorado River Union High School District

Mohave County  
Operational peer group: D  
Legislative districts: 3

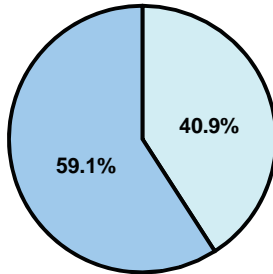
District size: Medium-Large  
Students attending: 2,396  
Number of schools: 2

## OPERATIONAL EFFICIENCY

### Average per-pupil spending

District  
State

**Classroom**  
\$4,110  
\$4,497



**Nonclassroom**  
\$2,841  
\$3,411

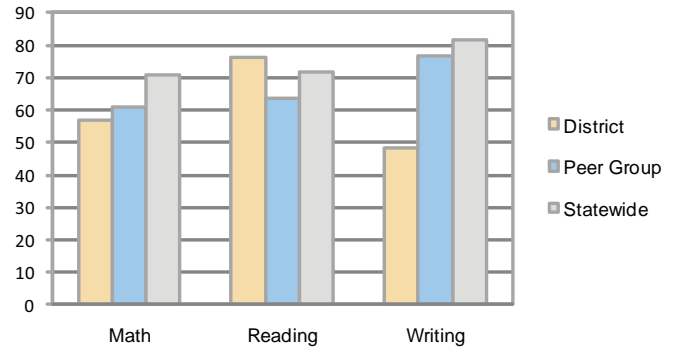
**Total**  
\$6,951  
\$7,908

### 5-year trend

Total spending per pupil increased by 23 percent. Spending in the classroom varied year to year and increased significantly overall from 55.6 to 59.1 percent. Spending on student support decreased significantly, while spending in other nonclassroom areas remained fairly stable.

## STUDENT ACHIEVEMENT AND TEACHER INFORMATION

### Percentage of students meeting state standards (AIMS)



### Adequate Yearly Progress (AYP) toward federal goals

2 schools met all applicable AYP objectives for NCLB.

### District's cost measures relative to peer group

Operational Area	Measure	District	Peer Average	State Average
Administration	Cost per pupil	\$485	\$775	\$729
	Students per administrator	82	61	66
Plant Operations	Cost per square foot	\$6.01	\$6.13	\$6.40
	Square footage per student	175	168	144
Food Service	Cost per meal equivalent	\$2.74	\$2.64	\$2.53
Transportation	Cost per mile	\$2.63	\$2.96	\$3.36
	Miles per rider	451	307	271

Very Low    Low    Comparable    High    Very High

### Student and teacher information

Measure	District	Peer average	State average
Attendance rate	92%	94%	95%
Graduation rate (2008)	71%	75%	75%
Poverty rate	24%	29%	19%
Student/teacher ratio	21.5	17.6	17.1
Average teacher salary	\$47,295	\$44,586	\$45,209
Average years' experience	9.7	10.4	8.3
Percent of teachers in first 3 years	25%	23%	16%

### Proposition 301

#### Teacher pay

On average, each teacher, librarian, and counselor earned between \$5,648 and \$6,079 in additional salary.

### Per-pupil spending by function

	District		Peer	State	National
	2008	2009	2009	2009	2007
<b>Total</b>	<b>\$7,142</b>	<b>\$6,951</b>	<b>\$7,896</b>	<b>\$7,908</b>	<b>\$9,683</b>
<b>Classroom dollars</b>	<b>\$4,335</b>	<b>\$4,110</b>	<b>\$4,312</b>	<b>\$4,497</b>	<b>\$5,903</b>
<b>Nonclassroom dollars:</b>	<b>\$2,807</b>	<b>\$2,841</b>	<b>\$3,584</b>	<b>\$3,411</b>	<b>\$3,780</b>
Administration	463	485	775	729	1,050
Plant Operations	1,069	1,051	1,032	920	951
Food Service	274	304	365	382	369
Transportation	366	342	397	343	406
Student Support	378	350	629	594	512
Instruction Support	236	285	380	431	470
Other	21	24	6	12	22

### Performance pay plan goals and results

Type of goal	Goal met?
Student achievement	■
Dropout/ graduation rates	■
Student attendance	■
Parent/student satisfaction	■
Teacher attendance	■
Teacher professional development	■
Teacher evaluations	▴
Tutoring	■
Other	■

■ = yes, □ = no, and ▴ = partially