

Bullhead City Elementary School District

Mohave County
Operational peer group: J
Legislative districts: 3

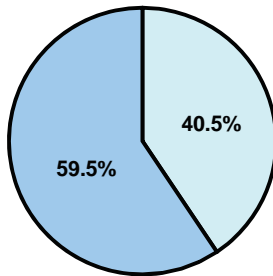
District size: Medium-Large
Students attending: 3,320
Number of schools: 7

OPERATIONAL EFFICIENCY

Average per-pupil spending

District
State

Classroom
\$4,774
\$4,497



Nonclassroom
\$3,256
\$3,411

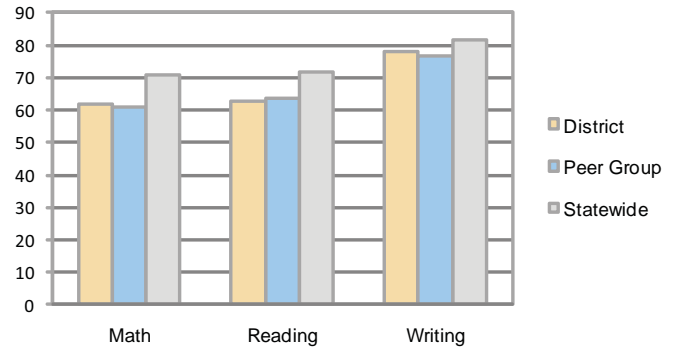
Total
\$8,030
\$7,908

5-year trend

Total spending per pupil increased by 55 percent. Spending in the classroom varied year to year and decreased overall from 61.3 to 59.5 percent. Spending on administration and instruction support increased, while spending in other nonclassroom areas remained fairly stable.

STUDENT ACHIEVEMENT AND TEACHER INFORMATION

Percentage of students meeting state standards (AIMS)



Adequate Yearly Progress (AYP) toward federal goals

6 schools met all applicable AYP objectives for NCLB. 1 school failed to meet the percentage of students tested objective.

Student and teacher information

Measure	District	Peer average	State average
Attendance rate	95%	94%	95%
Graduation rate (2008)	N/A	75%	75%
Poverty rate	28%	29%	19%
Student/teacher ratio	15.9	17.6	17.1
Average teacher salary	\$39,911	\$44,586	\$45,209
Average years' experience	6.8	10.4	8.3
Percent of teachers in first 3 years	45%	23%	16%

District's cost measures relative to peer group

Operational Area	Measure	District	Peer Average	State Average
Administration	Cost per pupil	\$957	\$921	\$729
	Students per administrator	73	64	66
Plant Operations	Cost per square foot	\$5.15	\$6.71	\$6.40
	Square footage per student	128	125	144
Food Service	Cost per meal equivalent	\$2.60	\$2.56	\$2.53
Transportation	Cost per mile	\$3.67	\$3.04	\$3.36
	Miles per rider	93	145	271

Very Low Low Comparable High Very High

Per-pupil spending by function

	District		Peer	State	National
	2008	2009	2009	2009	2007
Total	\$7,637	\$8,030	\$7,752	\$7,908	\$9,683
Classroom dollars	\$4,731	\$4,774	\$4,151	\$4,497	\$5,903
Nonclassroom dollars:	\$2,906	\$3,256	\$3,601	\$3,411	\$3,780
Administration	719	957	921	729	1,050
Plant Operations	615	658	879	920	951
Food Service	422	437	524	382	369
Transportation	346	363	410	343	406
Student Support	312	292	483	594	512
Instruction Support	492	549	384	431	470
Other	0	0	0	12	22

Proposition 301

Teacher pay

On average, each teacher earned \$3,690 in additional salary, and each librarian, speech pathologist, and counselor earned an additional \$530.

Performance pay plan goals and results

Type of goal	Goal met?
Student achievement	■
Dropout/ graduation rates	
Student attendance	
Parent/student satisfaction	
Teacher attendance	
Teacher professional development	
Teacher evaluations	
Tutoring	
Other	

■ = yes, □ = no, and ▴ = partially