

Bullhead City Elementary School District

Mohave County
Peer groups: Efficiency Group 10, Achievement Group 22
Legislative district(s): 3

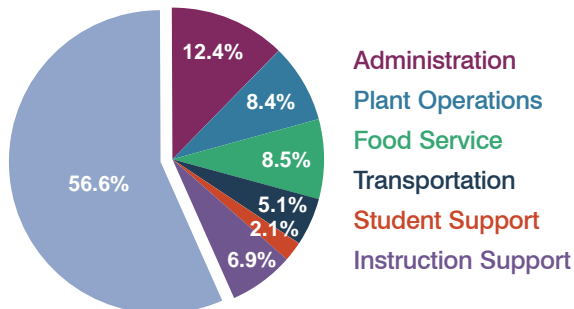
District size: Medium-Large
Students attending: 3,136
Number of schools: 7

OPERATIONAL EFFICIENCY

Spending by operational area

Classroom dollars

Nonclassroom dollars



5-year trend

Total spending per pupil increased by 26 percent. Spending in the classroom decreased significantly from 63.4 to 56.6 percent. Overall, spending on administration, transportation, food service, and instruction support increased significantly, while spending on other nonclassroom areas varied year to year.

District's cost measures relative to peer group

Operational Area	Measure	District	Peer Average	State Average
Administration	Cost per pupil	\$889	\$938	\$728
	Students per administrator	78	63	66
Plant Operations	Cost per square foot	\$4.44	\$6.51	\$6.10
	Square footage per student	135	135	152
Food Service	Cost per meal equivalent	\$2.89	\$2.43	\$2.45
Transportation	Cost per mile	\$3.71	\$3.27	\$3.39
	Miles per rider	90	200	283

Very low Low Comparable High Very high

Per-pupil spending by operational area

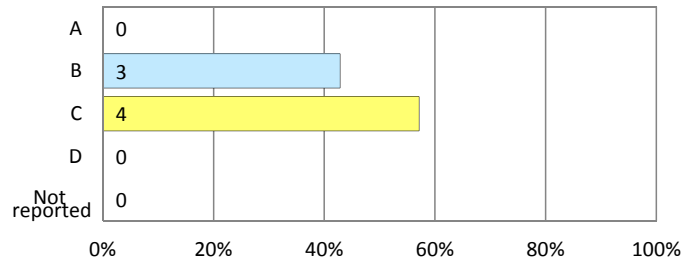
	District		Peer	State	National
	2010	2011	2011	2011	2009
Total	\$7,257	\$7,170	\$7,223	\$7,485	\$10,591
Classroom dollars	\$4,138	\$4,059	\$3,637	\$4,098	\$6,456
Nonclassroom dollars:	\$3,119	\$3,111	\$3,586	\$3,387	\$4,135
Administration	872	889	938	728	1,147
Plant Operations	664	601	892	927	1,033
Food Service	465	613	515	375	404
Transportation	313	362	402	352	443
Student Support	196	154	379	571	573
Instruction Support	609	492	460	434	535

STUDENT ACHIEVEMENT AND TEACHER INFORMATION

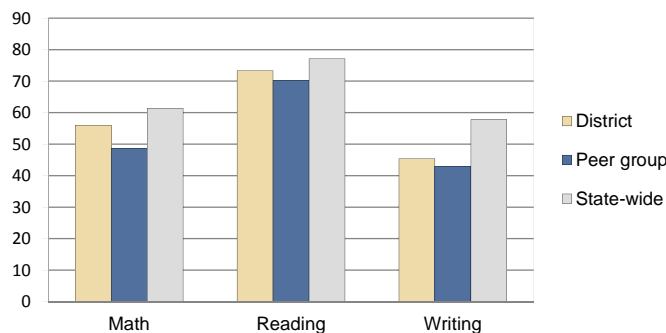
District and school letter grades

District grade: **B**

School grades (number and percentage):



Percentage of students meeting state standards (AIMS)



Student and teacher information

Measure	District	Peer Average	State Average
Attendance rate	95%	94%	95%
Graduation rate (2010)	N/A	N/A	N/A
Poverty rate (2010)	45%	54%	22%
Students per teacher	17.2	13.8	18.1
Average teacher salary	\$38,918	\$43,606	\$45,637
Average years of experience	7.7	10.0	10.9
Percent of teachers in first 3 years	21%	12%	16%

Proposition 301 pay, goals, and results

Average additional salary earned by teachers: \$2,261

Type of goal	Goal met?
Student achievement	■
Dropout/graduation rates	-
Student attendance	-
Parent/student satisfaction	-
Teacher attendance	-
Teacher professional development	-
Teacher evaluations	-
Tutoring	-
Other	-

■ = yes, □ = no, ▮ = partially, and - = no goal set