

Bullhead City Elementary School District

Mohave County

Efficiency peer groups 9 and T-6, Achievement peer group 21

Legislative district(s): 5

District size, location:

Medium-Large, Town

Students attending:

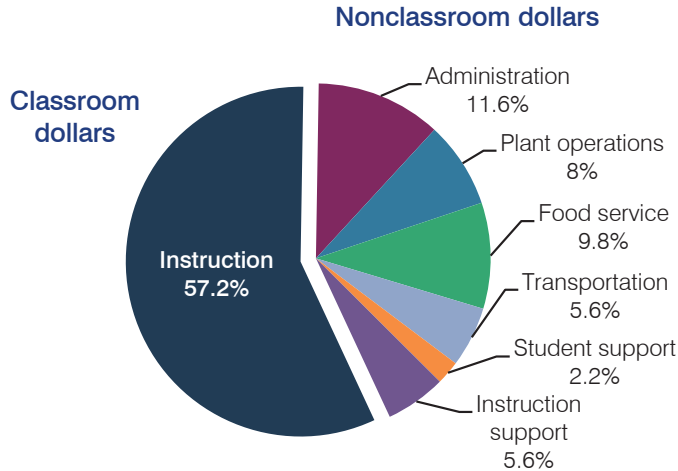
3,038

Number of schools:

6

OPERATIONAL EFFICIENCY

Spending by operational area



5-year spending trend

Total spending per pupil decreased by 10 percent. Spending in the classroom was very inconsistent year to year, decreasing overall from 61.9 to 57.2 percent. Overall, spending on administration and food service increased substantially, while spending on student support decreased. Spending on most other nonclassroom areas varied year to year.

Cost measures relative to peer averages

Operational area	Measure	District	Peer average	State average
Administration	Cost per pupil	\$802	\$883	\$746
	Students per administrator	80	65	67
Plant operations	Cost per square foot	\$4.43	\$6.31	\$6.03
	Square footage per student	124	135	153
Food service	Cost per meal equivalent	\$2.82	\$2.63	\$2.58
Transportation	Cost per mile	\$4.04	\$3.58	\$3.55
	Cost per rider	\$347	\$462	\$1,015

Very low Low Comparable High Very high

Per pupil spending by operational area

	District		Peer average	State average	National average
	2012	2013	2013	2013	2011
Total	\$7,047	\$6,892	\$7,185	\$7,496	\$10,658
Classroom dollars	4,200	3,941	3,621	4,031	6,520
Nonclassroom dollars:	2,847	2,951	3,564	3,465	4,138
Administration	848	802	883	746	1,138
Plant operations	547	550	836	924	1,015
Food service	557	675	535	396	412
Transportation	356	387	431	369	452
Student support	149	154	435	582	593
Instruction support	390	383	444	448	528

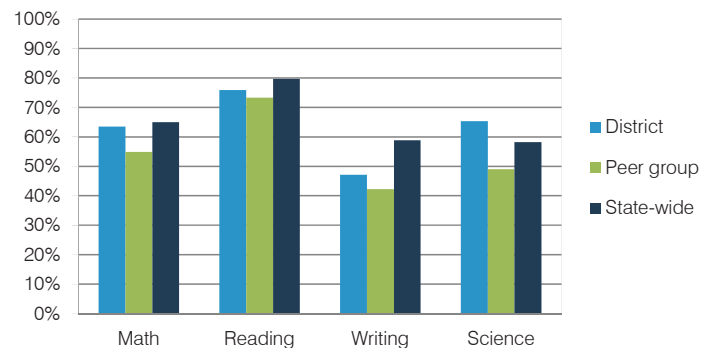
STUDENT ACHIEVEMENT, TEACHER MEASURES, AND FINANCIAL ASSESSMENT

ADE-reported district and school letter grades

District grade: **B**

Grade	Number of schools	Percentage of schools
A	1	17%
B	4	66%
C	1	17%
D	0	0%
F	0	0%
Not rated	0	0%

Students who met state standards (AIMS)



Student and teacher measures

Measure	District	Peer average	State average
Attendance rate	94%	93%	94%
Graduation rate (2012)	N/A	N/A	N/A
Poverty rate (2012)	47%	52%	25%
Students per teacher	20.1	12.4	18.3
Average teacher salary	\$50,442	\$46,086	\$45,264
Amount from Proposition 301	\$3,200	\$2,755	\$3,784
Average years of teacher experience	7.8	11.5	10.9
Percentage of teachers in first 3 years	30%	16%	19%

Financial stress assessment

Overall financial stress level: **Moderate**

Measure: 2011 through 2013

Assessment

Number of students attending district	Moderate decrease
Spending exceeded operating/capital budgets	No overspending
Spending increase election results	No election held
Operating reserve percentage (max. 4%), trend	2.6%, Decreasing
Years of capital reserve held	1 to 3 years
Current financial and internal control status	Marginally compliant

Stress level

