

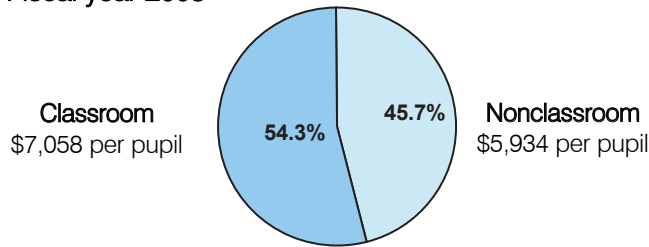
Classroom Dollars and Proposition 301 Results

Alpine Elementary School District

District size: Very Small
 Students attending: 35
 Number of schools: 1
 Number of certified teachers: 4

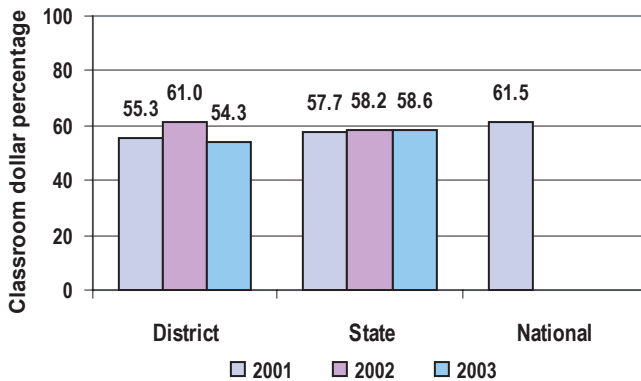
Classroom Dollars

Fiscal year 2003



Classroom dollar ranking: 148 of 226 districts.

3-year comparison



Expenditures by function

	Percentage				
	District			State	National
	2001	2002	2003	2003	2000
Classroom dollars	55.3	61.0	54.3	58.6	61.7
Nonclassroom dollars:					
Administration	16.5	15.6	15.7	9.9	10.9
Plant operations	10.8	10.1	12.1	11.7	9.6
Food service				4.6	4.0
Transportation	11.9	8.5	12.3	3.9	4.0
Student support	5.2	4.8	5.2	6.8	5.0
Instruction support			0.4	4.3	4.5
Other	0.3			0.2	0.3

Comparative Information

	District			State
	2001	2002	2003	2003
Student/teacher ratio	10.0	8.8	8.8	17.9
Average teacher salary	\$33,941	\$42,188	\$45,030	\$40,328
Average years' experience	12.0	12.4	12.9	8.7

Proposition 301

	2002 Expenditures	2003 Expenditures
Base	\$ 2,803	\$ 2,643
Performance	5,617	5,286
Menu	5,606	5,286
Total	<u>\$14,026</u>	<u>\$13,215</u>

District-reported 2003 results

Teacher pay

- On average, each teacher earned an additional \$4,000 in salary.

Performance

- The District accomplished most of its goals, which were based on school performance.
- Students demonstrated 1 year's academic progress in writing.
- The District made progress toward increasing student attendance to 95 percent.

Menu

- Monies were used solely to increase teacher compensation.