

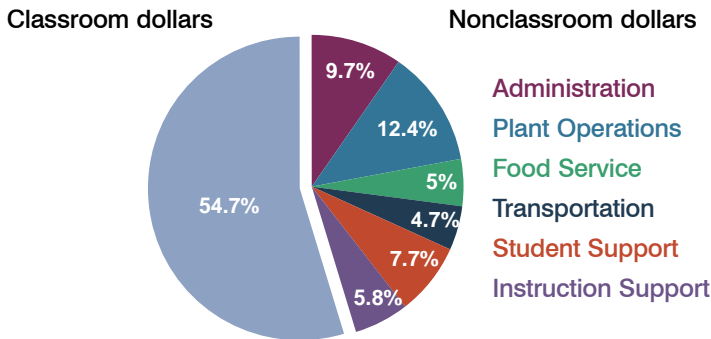
State of Arizona

Total current expenditures¹: \$6,787,957,285
 Number of districts: 239

Students attending: 906,884
 Number of schools: 1,422

OPERATIONAL EFFICIENCY

Spending by operational area



5-year trend

Total spending per pupil increased by 10 percent. Spending in the classroom decreased significantly from 58.3 to 54.7 percent. Spending on plant operations, transportation, student support, and instruction support increased, and spending on administration and food service increased slightly.

Cost measures and other related measures

Operational Area	Measure	2009	2010	2011
Administration	Cost per pupil	\$729	\$721	\$728
	Students per administrator	66	66	66
Plant Operations	Cost per square foot	\$6.40	\$6.25	\$6.10
	Square footage per student	144	146	152
Food Service	Cost per meal equivalent	\$2.53	\$2.41	\$2.45
Transportation	Cost per mile	\$3.36	\$3.35	\$3.39
	Miles per rider	271	282	283

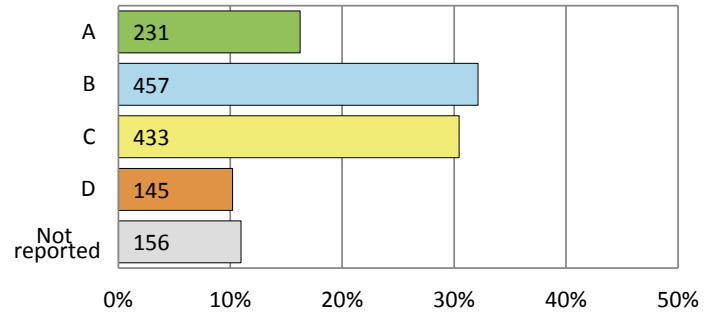
Per-pupil spending by operational area

	State			National
	2009	2010	2011	2009
Total	\$7,908	\$7,609	\$7,485	\$10,591
Classroom dollars	\$4,497	\$4,253	\$4,098	\$6,456
Nonclassroom dollars:	\$3,411	\$3,356	\$3,387	\$4,135
Administration	729	721	728	1,147
Plant Operations	920	914	927	1,033
Food Service	382	366	375	404
Transportation	343	342	352	443
Student Support	594	581	571	573
Instruction Support	443	432	434	535

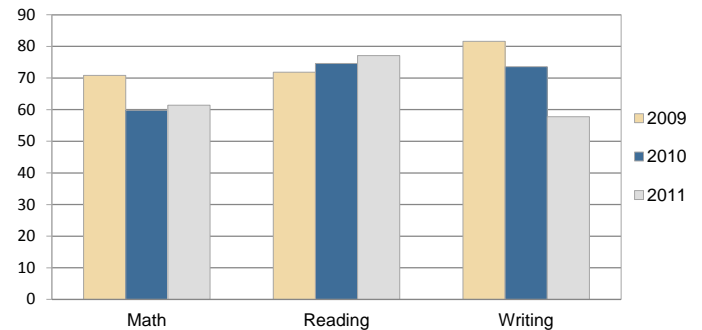
¹ See page c-1.

STUDENT ACHIEVEMENT AND TEACHER INFORMATION

State-wide school grades (number and percentage)



Percentage of students meeting state standards (AIMS)



Student and teacher information

Measure	2009	2010	2011
Attendance rate	95%	94%	95%
Graduation rate	76%	78%	N/A
Poverty rate	21%	22%	N/A
Students per teacher	17.1	17.9	18.1
Average teacher salary	\$45,209	\$47,077	\$45,637
Average years of experience	9.7	10.6	10.9
Percent of teachers in first 3 years	16%	20%	16%

Proposition 301 pay, goals, and results

Average additional salary earned by teachers: \$3,081

Type of goal	Set goal	Number of Districts		
		Yes	Partially	No
Student achievement	201	143	53	5
Dropout/graduation rates	43	37	5	1
Student attendance	76	66	7	3
Parent/student satisfaction	103	93	10	
Teacher attendance	26	14	11	1
Teacher professional development	125	104	21	
Teacher evaluations	65	55	10	
Tutoring	39	35	4	
Other	97	75	22	