

# Cartwright Elementary School District

Maricopa County

Efficiency peer groups 7 and T-1, Achievement peer group 15<sup>1</sup>

Legislative district(s): 19 and 29

District size, location:

Large, City

Students attending:

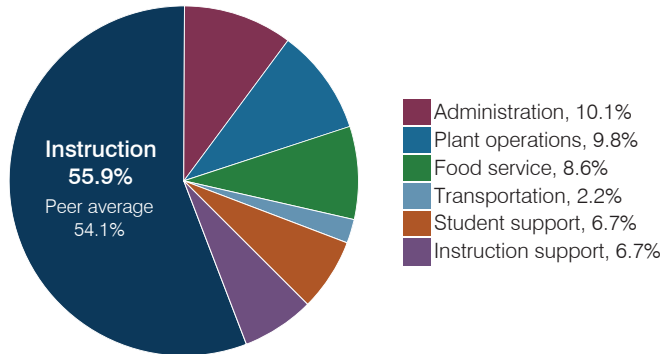
16,985

Number of schools:

21

## OPERATIONAL EFFICIENCY

### Spending by operational area



### Efficiency measures relative to peer averages

Operational area	Measure	District	Peer average	State average
Administration	Cost per pupil	\$792	\$796	\$844
	Students per administrative position	83	75	67
Plant operations	Cost per square foot	\$6.13	\$6.23	\$6.30
	Square footage per student	126	135	155
Food service	Cost per meal	\$2.58	\$2.77	\$2.88
Transportation	Cost per mile	\$7.29	\$6.81	\$3.84
	Cost per rider	\$1,013	\$942	\$1,198

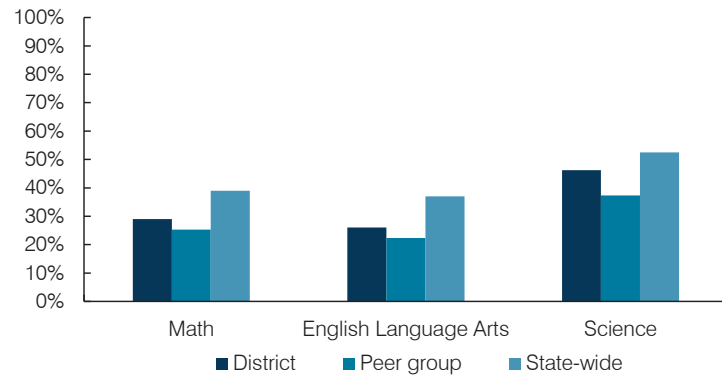
Very low
Low
Comparable
High
Very high

### Per pupil spending

Spending by area	District		Peer average 2017	State average 2017
	2016	2017		
Instruction	\$ 4,134	\$ 4,391	\$ 4,304	\$ 4,377
Administration	656	792	796	844
Plant operations	669	774	837	977
Food service	649	679	566	422
Transportation	164	173	303	381
Student support	496	525	671	679
Instruction support	452	523	511	461
<b>Total operational</b>	<b>\$ 7,220</b>	<b>\$ 7,857</b>	<b>\$ 7,988</b>	<b>\$ 8,141</b>
Land and buildings	\$ 78	\$ 140	\$ 499	\$ 691
Equipment	324	243	357	424
Interest	74	72	361	236
Other	6	6	168	161
<b>Total nonoperational</b>	<b>\$ 482</b>	<b>\$ 461</b>	<b>\$ 1,385</b>	<b>\$ 1,512</b>
<b>Total per pupil spending</b>	<b>\$ 7,702</b>	<b>\$ 8,318</b>	<b>\$ 9,373</b>	<b>\$ 9,653</b>

## STUDENT ACHIEVEMENT, STUDENT AND TEACHER MEASURES, AND REVENUES

### Students who passed state assessments



### Student and teacher measures

Measure	District	Peer average	State average
Attendance rate	94%	94%	94%
Graduation rate (2016)	N/A	N/A	N/A
Poverty rate (2016)	41%	44%	22%
Special education population	10%	10%	12%
Students per teacher	21.1	19.1	18.5
Average teacher salary	\$57,515	\$52,696	\$48,372
Amount from Prop 301	\$5,087	\$4,542	\$5,840
Average years of teacher experience	10.0	10.3	11.3
Percentage of teachers in first 3 years	23%	22%	19%

### Per pupil revenues

Revenues by source	District		Peer average 2017	State average 2017
	2016	2017		
Federal	\$ 1,887	\$ 1,745	\$ 1,522	\$ 1,318
State	4,794	4,803	4,236	3,831
Local	1,833	1,890	3,488	4,443
<b>Total per pupil revenues</b>	<b>\$ 8,514</b>	<b>\$ 8,438</b>	<b>\$ 9,246</b>	<b>\$ 9,592</b>

#### Select revenues from common sources

	District	Peer average	State average
Equalization formula funding	\$ 4,956	\$ 5,000	\$ 5,133
Amount from Prop 123	232	235	235
Prop 123 additional funding	45	45	44
Grants	1,920	1,778	1,543
Donations and tax credits	12	19	45

#### Select revenues from less common sources

	District	Peer average	Number of peers receiving
Desegregation	\$ 265	\$ 272	4 of 10
Small school adjustment	0	0	0 of 10
Federal impact aid	0	0	2 of 10
Voter-approved levy increases	825	855	10 of 10

<sup>1</sup> See Appendix A for information such as districts included in each peer group and Appendix B for sources and methodology.

**Instructional spending percentage**

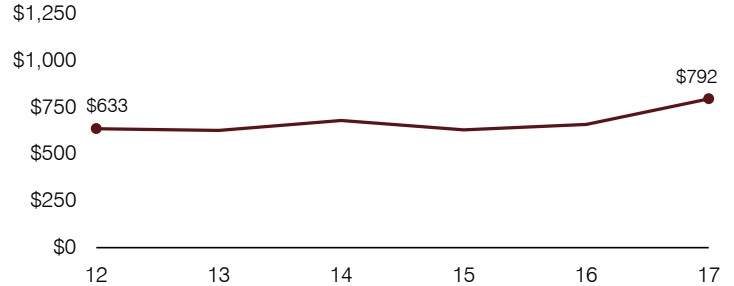
Year:	2001	2002	2003	2004	2005	2006	2007	2008	2009	2010	2011	2012	2013	2014	2015	2016	2017
Percentage:	66.4	63.3	62.0	60.7	61.6	61.3	62.2	61.6	61.1	60.0	58.9	56.8	56.5	56.8	56.2	57.3	55.9

**OPERATIONAL TRENDS AND FINANCIAL STRESS ASSESSMENT**  
Fiscal years as indicated

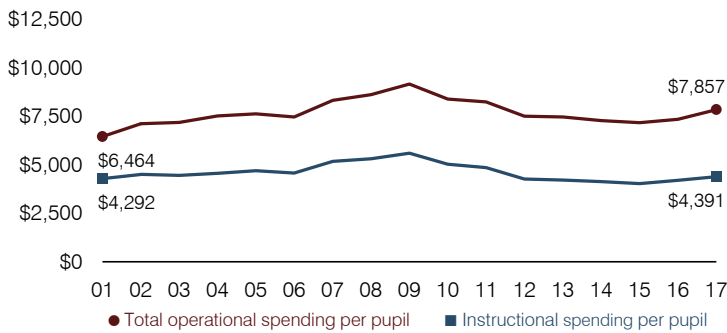
**5-year spending trend (2012 through 2017)**

Total operational spending per pupil, adjusted for inflation, increased by 5 percent. The percentage of dollars spent on instruction varied year to year, decreasing slightly overall from 56.8 to 55.9 percent. As a percentage of total operational spending, administration and food service increased, while instruction support decreased and student support decreased slightly. Other noninstructional areas remained fairly stable.

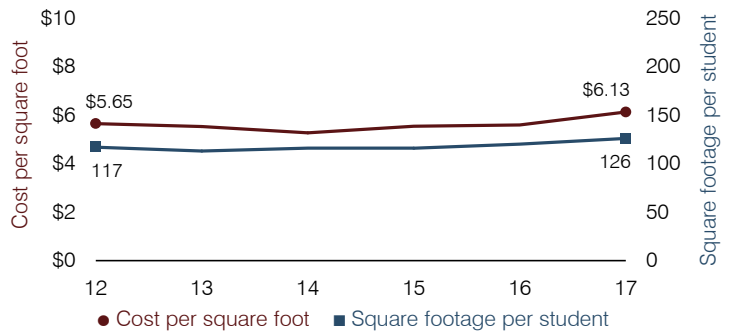
**Administrative cost per pupil**



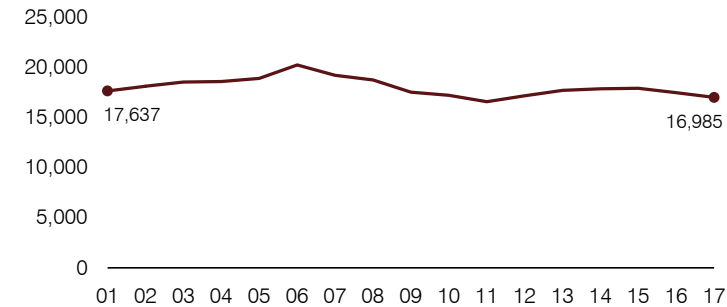
**Total operational and instructional spending per pupil (inflation adjusted to 2017 dollars)**



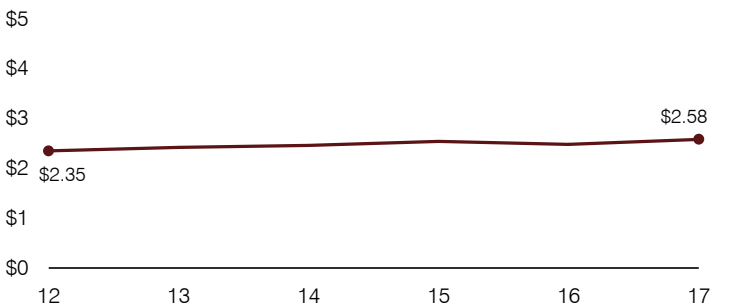
**Plant cost per square foot and square footage per student**



**Students attending**



**Food service cost per meal**



**Financial stress assessment**

Overall financial stress level: **Low**

Measure: 2015 through 2017	Assessment
Change in number of district students	Large decrease
Spending exceeded operating/capital budgets	No overspending
Spending increase election results	No election held
Operating reserve percentage, Trend	8.4%, Varying
Years of capital reserve held	More than 3 years
Current financial and internal control status	Compliant

Low
Moderate
High

**Transportation costs per mile and per rider**

